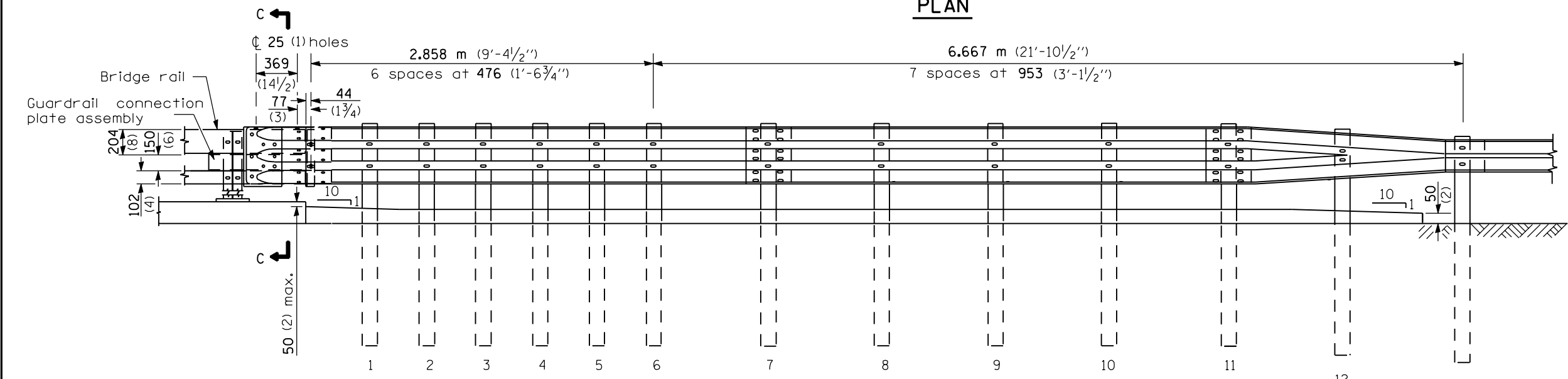
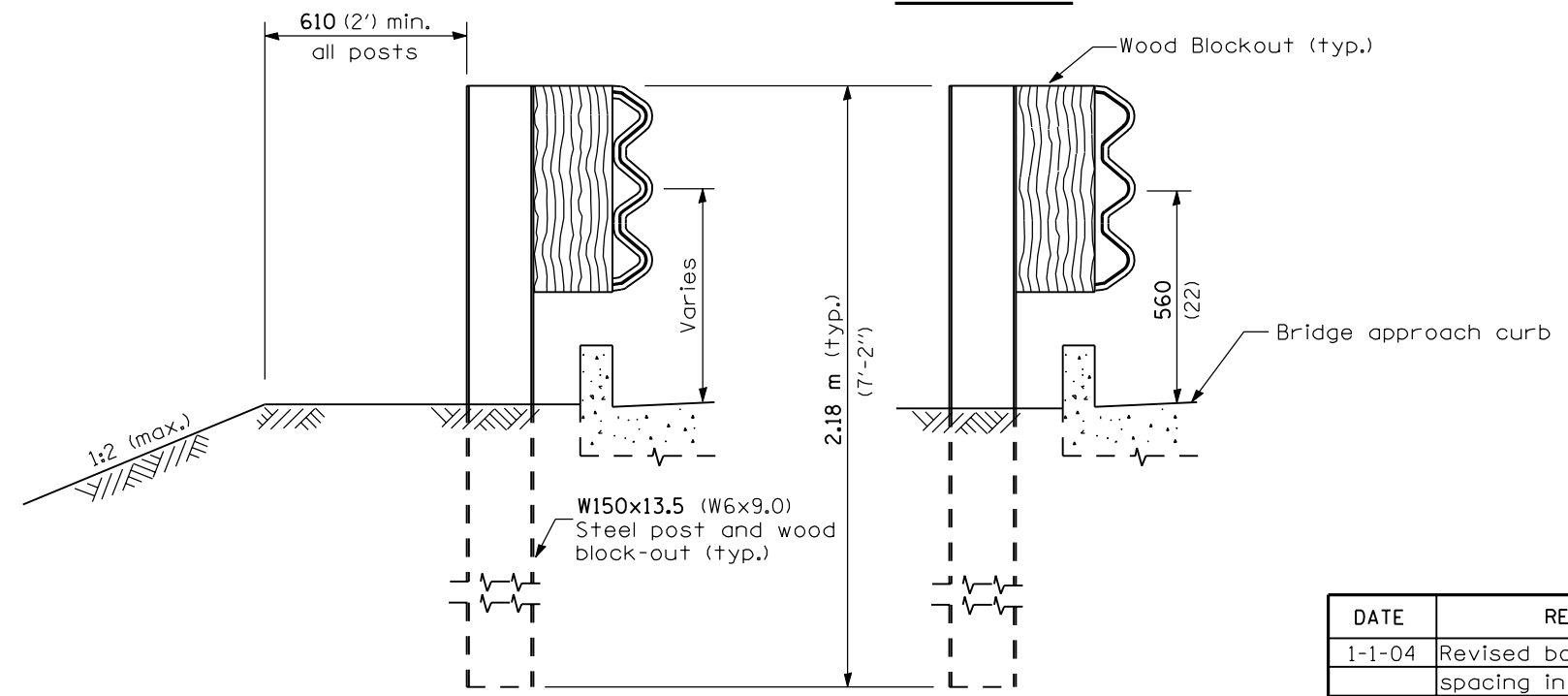


PLAN



ELEVATION



SECTION A-A

SECTION B-B

GENERAL NOTES

- See Standard 630001 for details of guardrail not shown.
- Thrie beam rail shall be bolted to block-out at all posts.
- See Standard 420401 for details of bridge approach pavement.
- All slope ratios are expressed as units of vertical displacement to units of horizontal displacement (V:H).
- All dimensions are in millimeters (inches) unless otherwise shown.

Illinois Department of Transportation

PASSED January 1, 2004

ISSUED 1-1-2003

ENGINEER OF POLICY AND PROCEDURES
Michael Brand

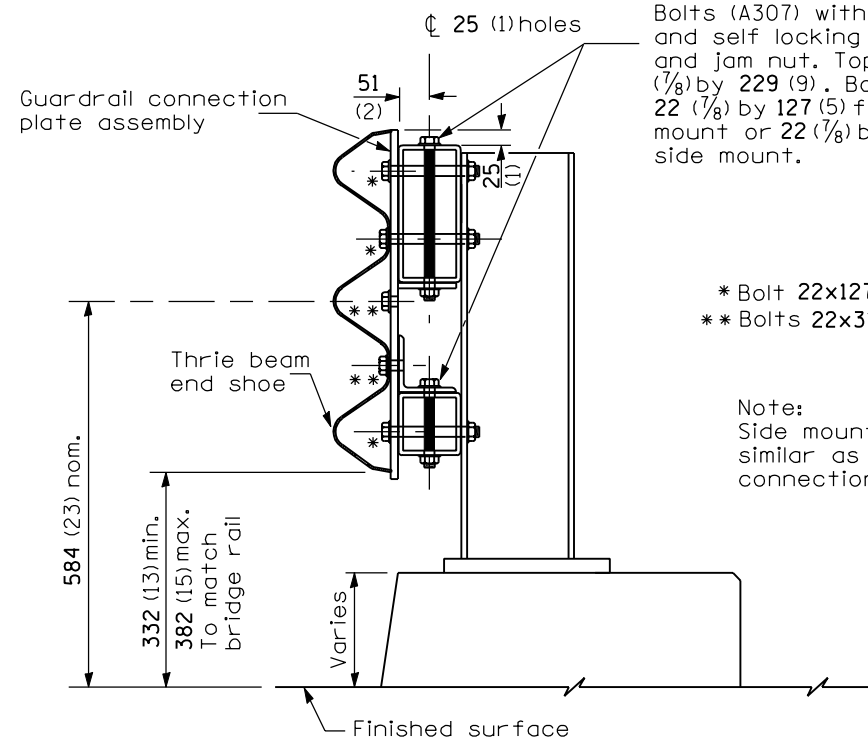
APPROVED January 1, 2004
Michael L. Hine
ENGINEER OF DESIGN AND ENVIRONMENT

DATE	REVISIONS
1-1-04	Revised bolts and bolt spacing in connection plate & wood blockouts.
1-1-03	New Standard

TRAFFIC BARRIER TERMINAL, TYPE 6A

Sheet 1 of 3

STANDARD 631032-01

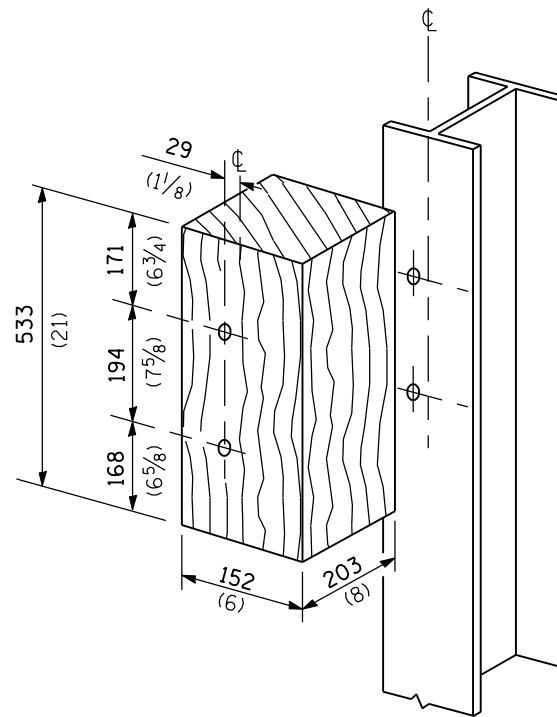


SECTION C-C

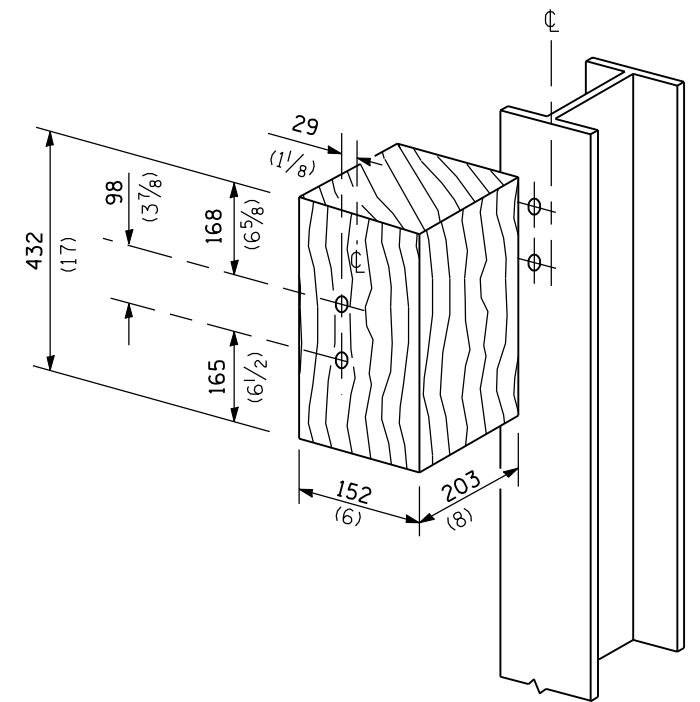
Bolts (A307) with washers and self locking nut or nut and jam nut. Top bolt 22 (7/8) by 229 (9). Bottom bolt 22 (7/8) by 127 (5) for curb mount or 22 (7/8) by 179 (7) for side mount.

* Bolt 22x127 (7/8x5)
** Bolts 22x31 (7/8x2)

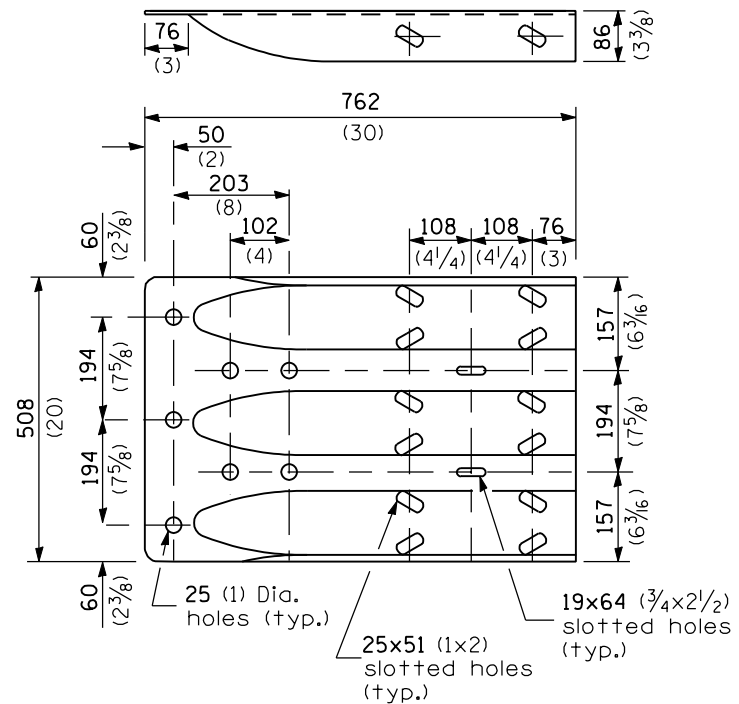
Note:
Side mounted rail similar as to connection details.



POSTS 1-11 WOOD BLOCKOUT DETAIL



POST 12 WOOD BLOCKOUT DETAIL



MODIFIED THRIE BEAM END SHOE DETAIL

Illinois Department of Transportation

PASSED January 1, 2004

ISSUED 1-1-2003

ENGINEER OF POLICY AND PROCEDURES
Michael Brand

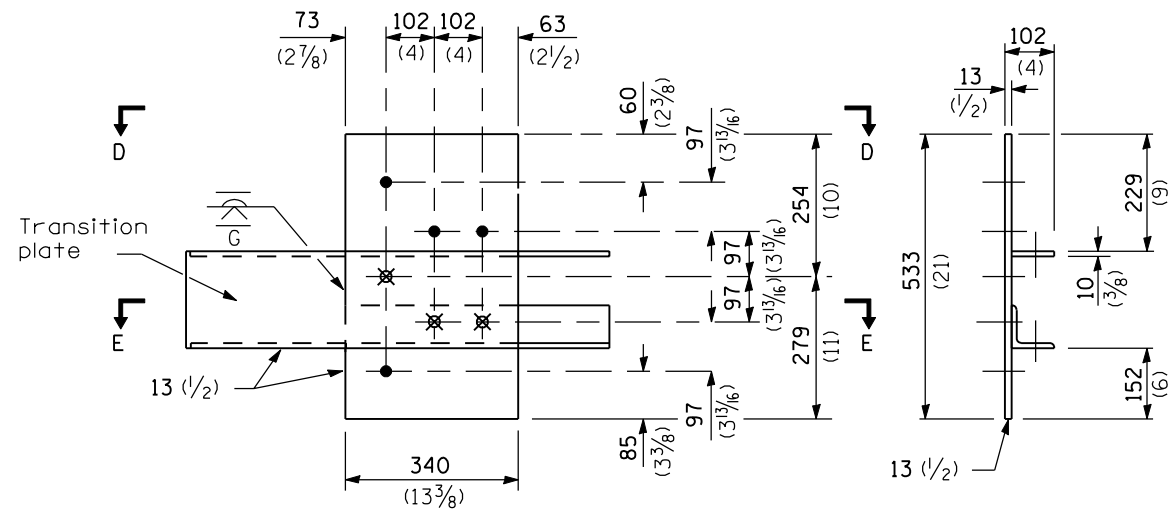
APPROVED January 1, 2004

ENGINEER OF DESIGN AND ENVIRONMENT
Michael L. Hine

**TRAFFIC BARRIER
TERMINAL, TYPE 6A**

Sheet 2 of 3

STANDARD 631032-01



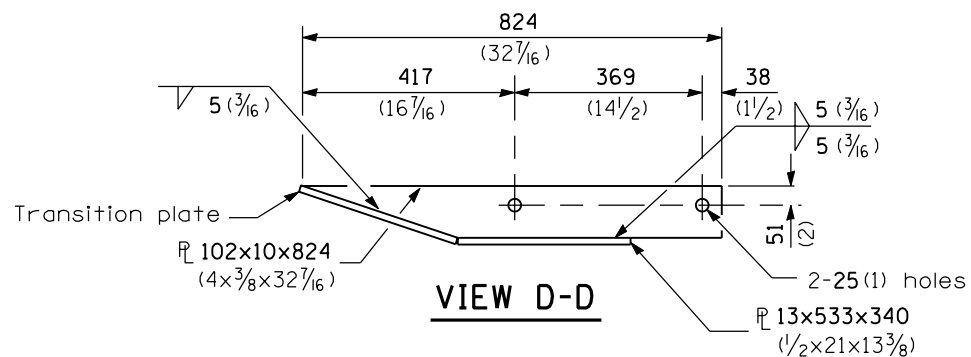
- \varnothing 4-25 (1) holes for 22 (7/8) H.S. bolts and nuts
- ⊗ Drill and tap 3 holes for 22 (7/8) H.S. bolts.

LEGEND

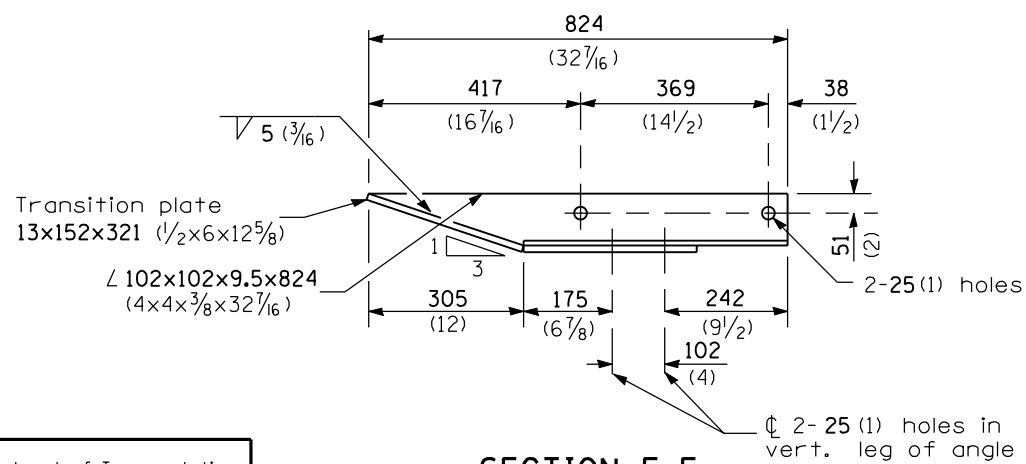
Dimensions	A	B
For Curb Mounted Rail	222 (8 3/4)	89 (3 1/2)
For Side Mounted Rail	247 (9 3/4)	64 (2 1/2)

GUARDRAIL CONNECTION PLATE ASSEMBLY DETAILS

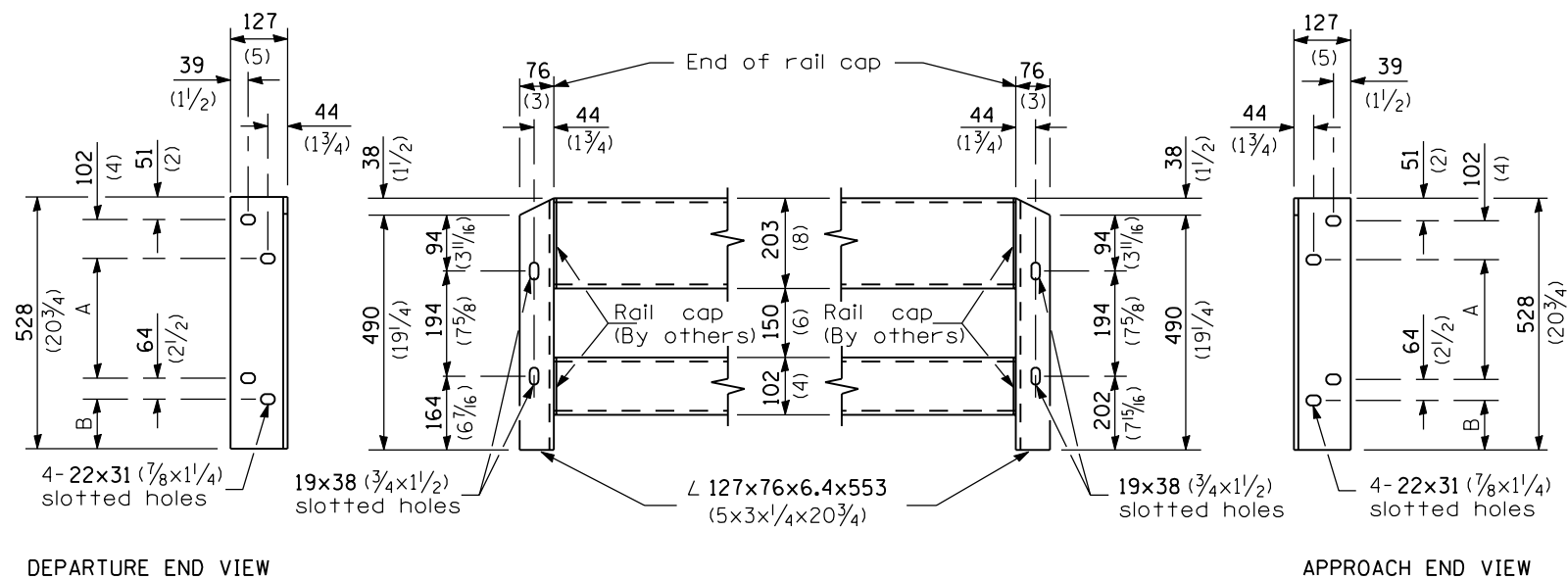
(Mirror for opposite end)



VIEW D-D



SECTION E-E



DEPARTURE END VIEW

APPROACH END VIEW

CONNECTION ANGLES

(Install angles to rail caps using 19 (5/8) washers and self-locking nuts or nuts and jam nuts, to be provided by others)

Illinois Department of Transportation

PASSED January 1, 2004

ISSUED 1-1-2003

ENGINEER OF POLICY AND PROCEDURES
Michael Brand

APPROVED January 1, 2004

ENGINEER OF DESIGN AND ENVIRONMENT
Michael L. Hine

**TRAFFIC BARRIER
TERMINAL, TYPE 6A**

Sheet 3 of 3

STANDARD 631032-01