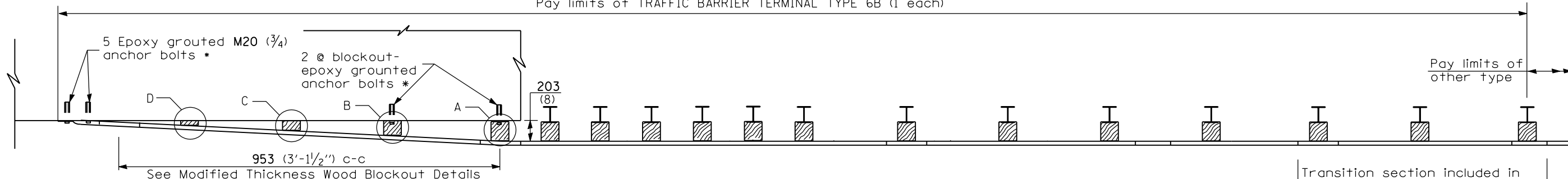


Pay limits of TRAFFIC BARRIER TERMINAL TYPE 6B (1 each)

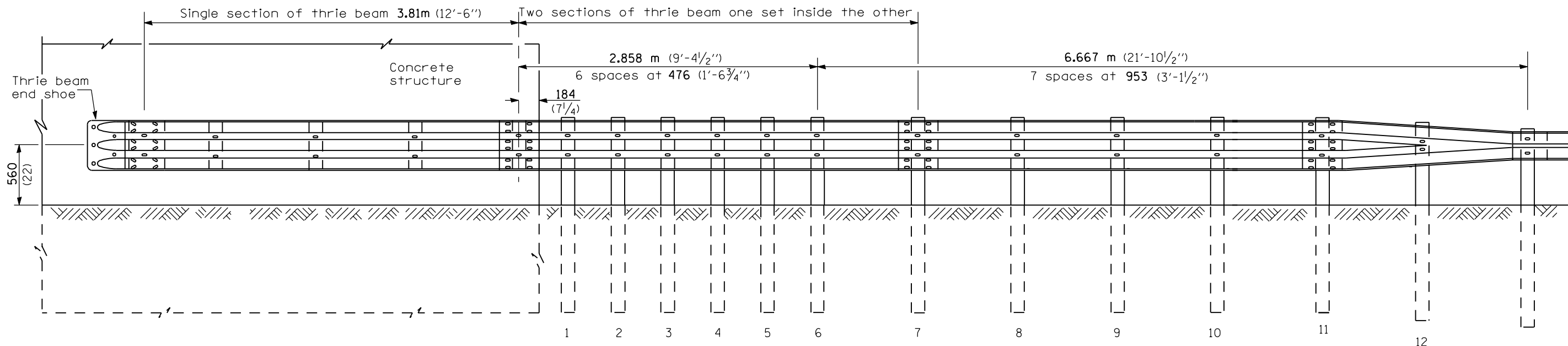


* With standard washers. After tightening, cut the anchor bolts flush with nuts, and damage the nut to prevent it from loosening.

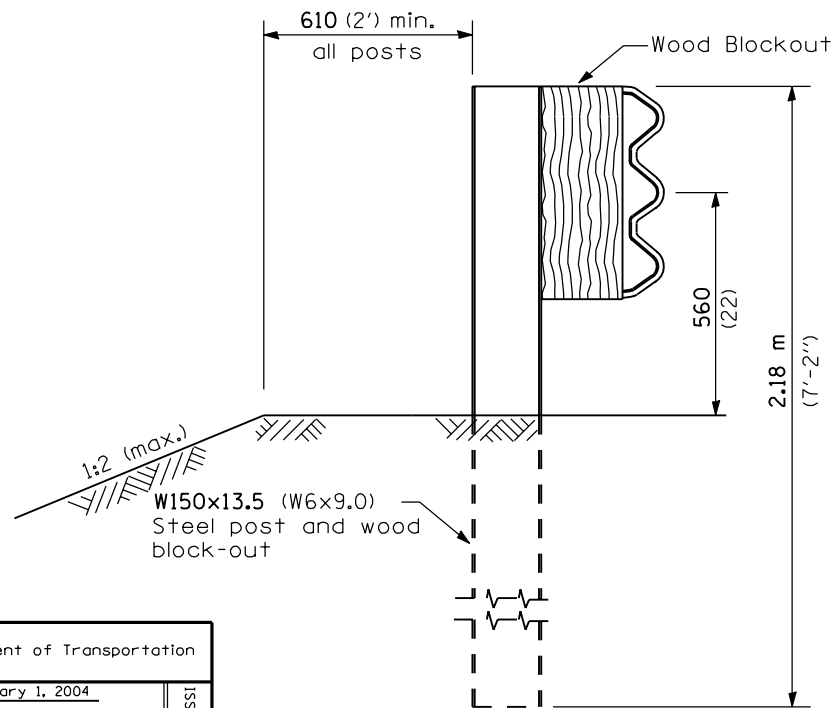
Note: See wood block details A, B, C. & D

PLAN

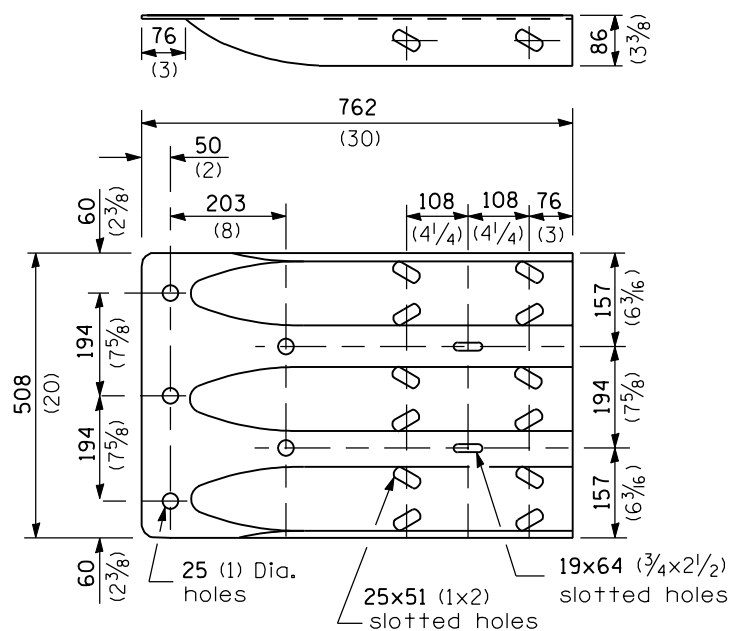
Transition section included in TRAFFIC BARRIER TERMINAL TYPE 6B (3.4mm (10 gauge) rail element)



ELEVATION



SECTION A-A



THRIE BEAM END SHOE DETAIL

GENERAL NOTES

See Standard 630001 for details of guardrail not shown.

Thrie beam rail shall be bolted to block-out at all posts.

All slope ratios are expressed as units of vertical displacement to units of horizontal displacement (V:H).

All dimensions are in millimeters (inches) unless otherwise shown.

DATE	REVISIONS
1-1-04	Revised wood blockouts.
1-1-03	New Standard

TRAFFIC BARRIER TERMINAL, TYPE 6B

Sheet 1 of 2

STANDARD 631033-01

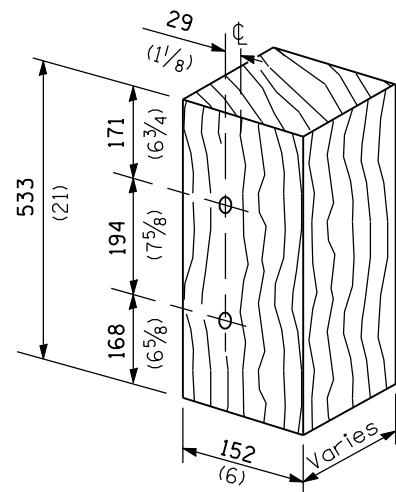
Illinois Department of Transportation

PASSED January 1, 2004

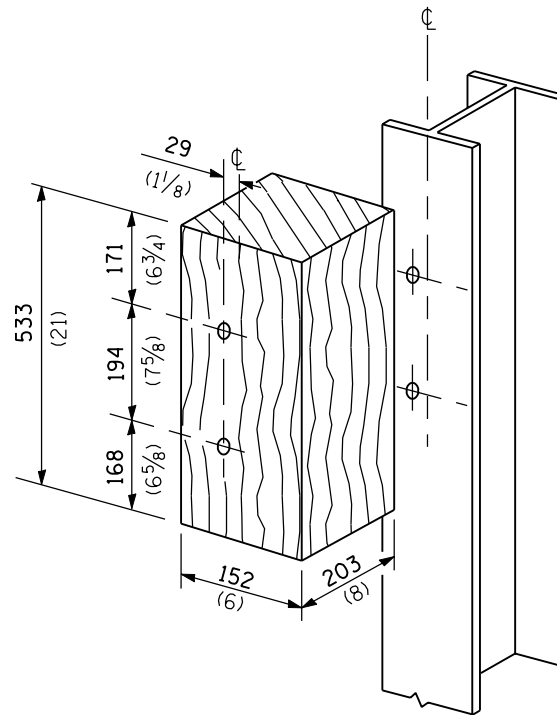
ISSUED 1-1-2003

ENGINEER OF POLICY AND PROCEDURES
Michael Brand

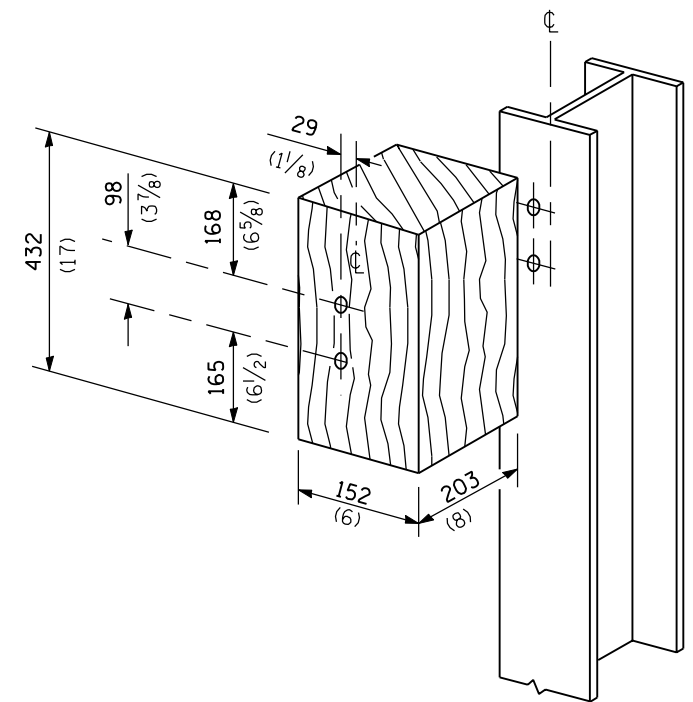
APPROVED January 1, 2004
Michael L. Hine
 ENGINEER OF DESIGN AND ENVIRONMENT



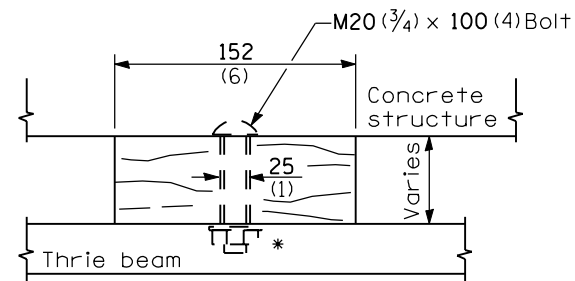
MODIFIED THICKNESS WOOD BLOCKOUT DETAIL



POSTS 1-11 WOOD BLOCKOUT DETAIL

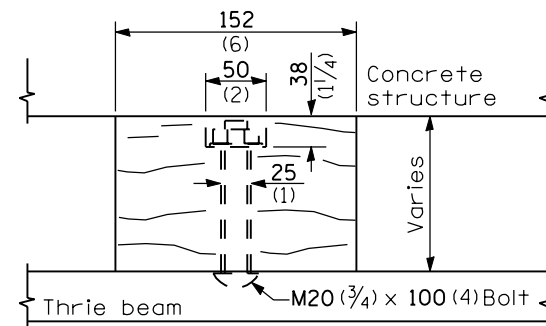


POST 12 WOOD BLOCKOUT DETAIL

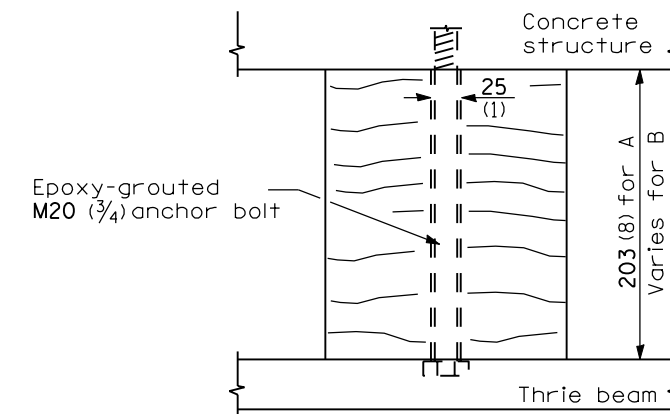


WOOD BLOCKOUT D

Bolt to thrie beam with M20 (3/4) by 100 (4) bolt, washer & nut. Reverse direction of insertion. *



WOOD BLOCKOUT C



WOOD BLOCKOUT A & B

Illinois Department of Transportation

PASSED January 1, 2004

ISSUED 1-1-2003

ENGINEER OF POLICY AND PROCEDURES
Michael Brand

APPROVED January 1, 2004

ENGINEER OF DESIGN AND ENVIRONMENT
Michael L. Hine

TRAFFIC BARRIER
 TERMINAL, TYPE 6B

Sheet 2 of 2

STANDARD 631033-01