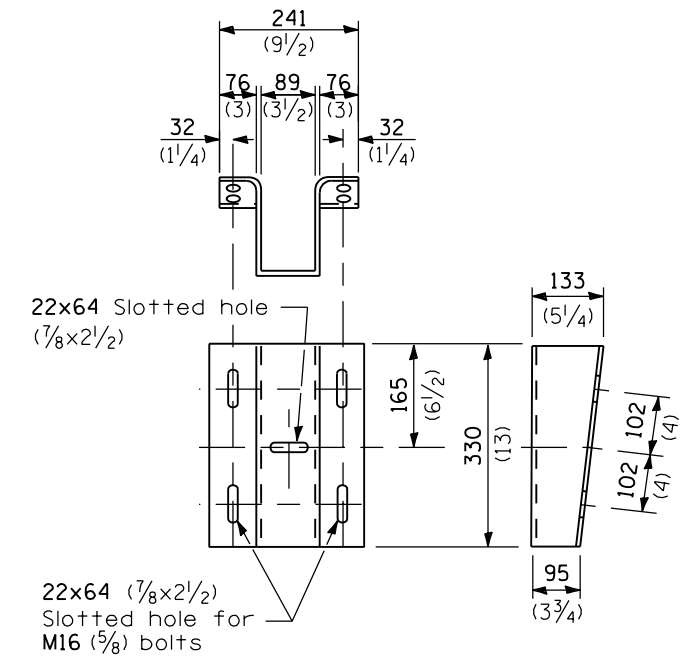
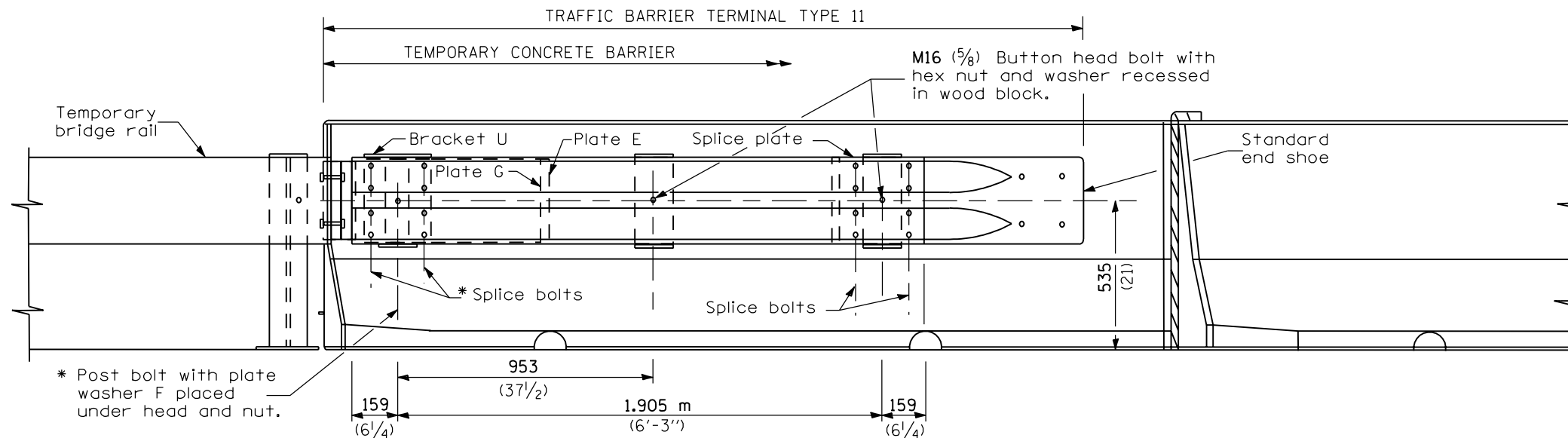


PLAN



BRACKET U

(6 1/4) Thick steel plate or rectangular tubing with flange welded on.)



ELEVATION

GENERAL NOTES

For details of guardrail not shown, see Standard 630001.

Install the face of the guardrail flush with the face of the temporary bridge rail. Install plate washer D so that the 25 mm (1") projection fills the remainder of the slotted holes in the 25 mm (1") end plate on plate G after the M24 (1") diameter bolts are in place.

* Bolts shall be provided with a lock nut or double nut and shall be tightened only to a point that will allow plate G to be free to move.

** After tightening, cut the anchor bolts flush with nuts, and damage the bolt head to prevent them from loosening.

All dimensions are in millimeters (inches) unless otherwise shown.

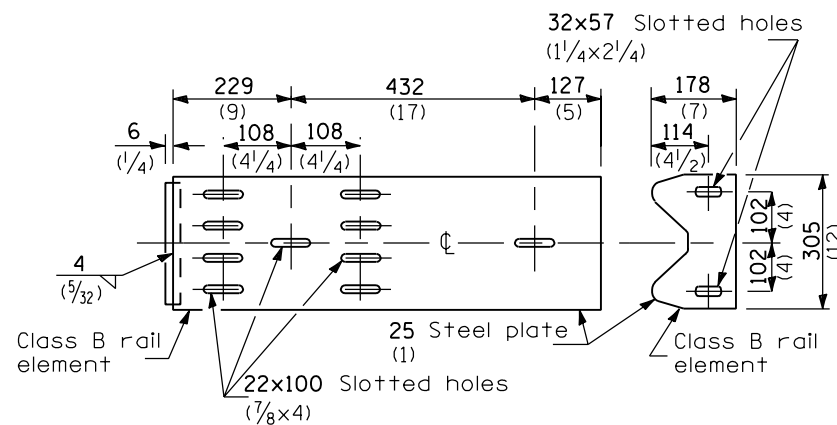


PLATE G

(Place between the rail element and Plate E)

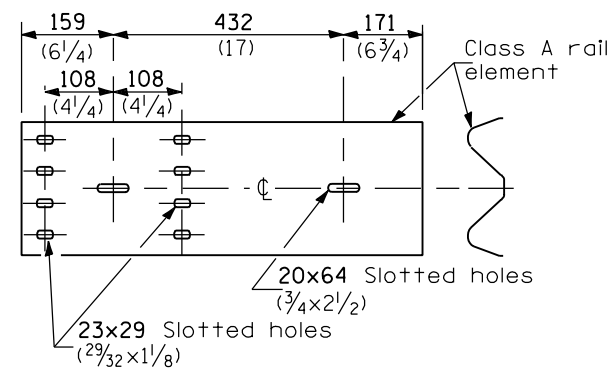


PLATE E

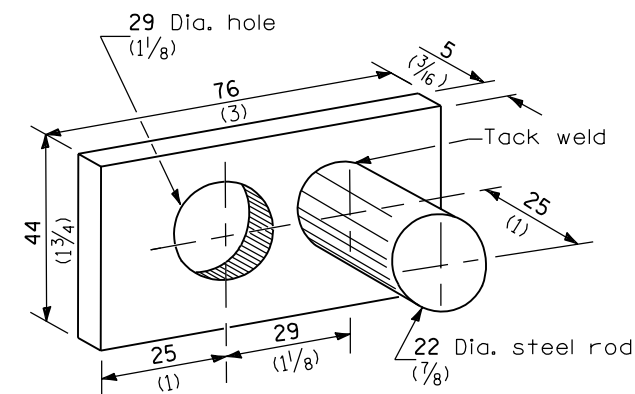


PLATE WASHER D

DATE	REVISIONS
1-1-02	Revised M22 (7/8) Bolts.
1-1-97	Renum. Standard 2388-2. Deleted DN Symbol.

**TRAFFIC BARRIER
TERMINAL TYPE 11**

STANDARD 631051-01

Illinois Department of Transportation

PASSED January 1, 2002
Ryan Driskell
 ENGINEER OF POLICY AND PROCEDURES

APPROVED January 1, 2002
Michael L. Hine
 ENGINEER OF DESIGN AND ENVIRONMENT

ISSUED 1-1-97