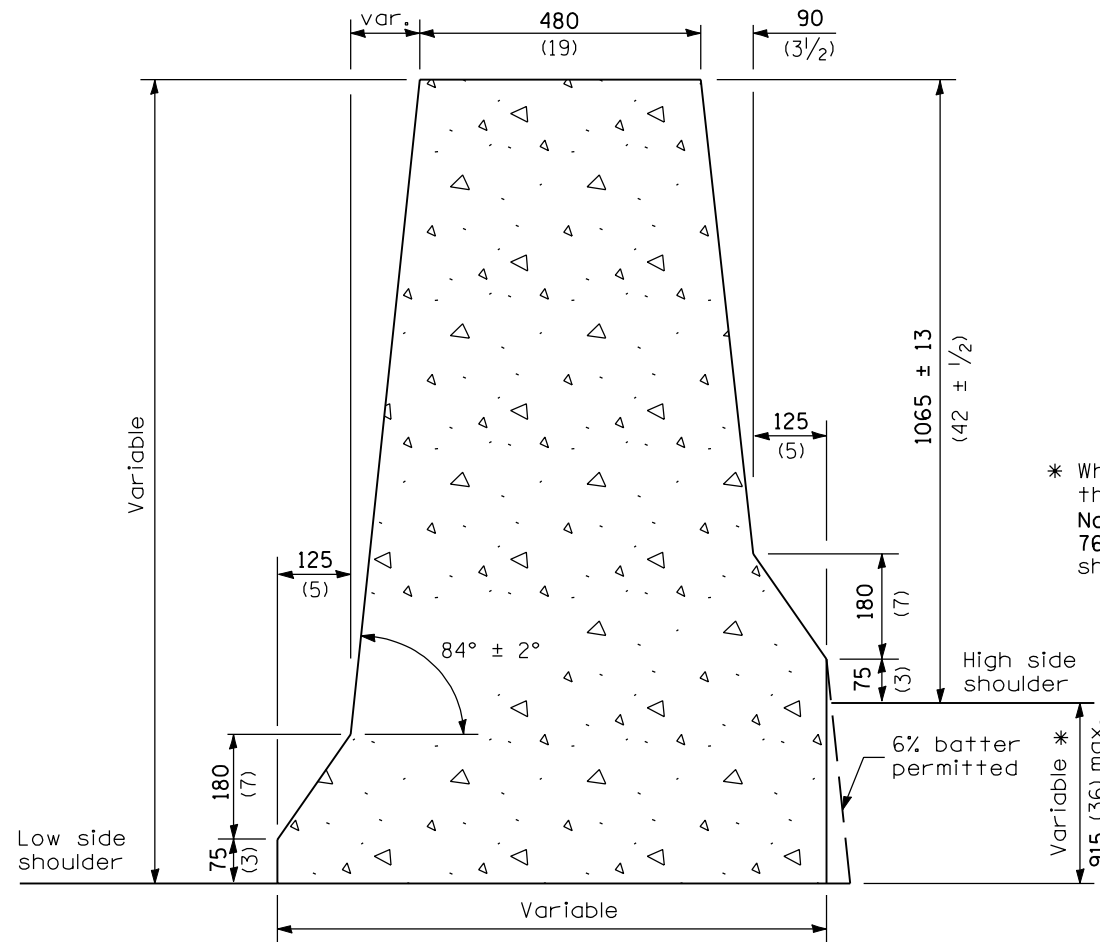
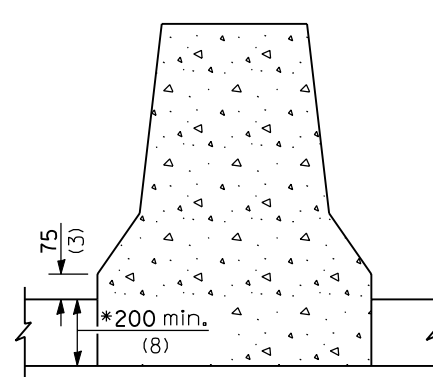


END SECTION



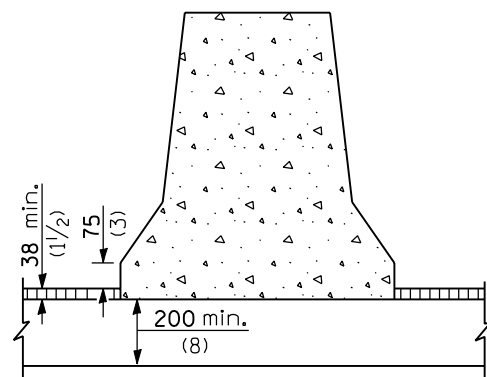
VARIABLE END SECTION

* When this dimension exceeds 300 (12), the barrier may be cast in two pours. No. 19 x 300 (No. 6 x 12) tie bars at 760 (30) centers, or a suitable keyway, shall be used between the pours.

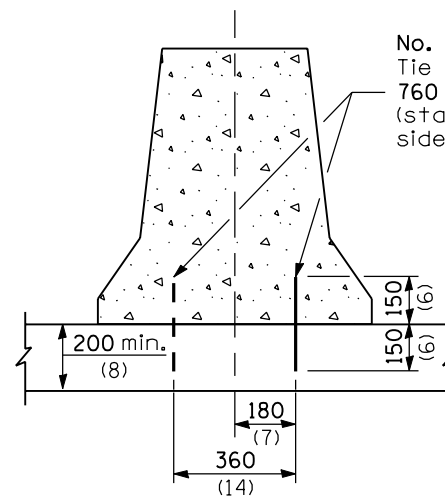


NEW MONOLITHIC PCC BASE

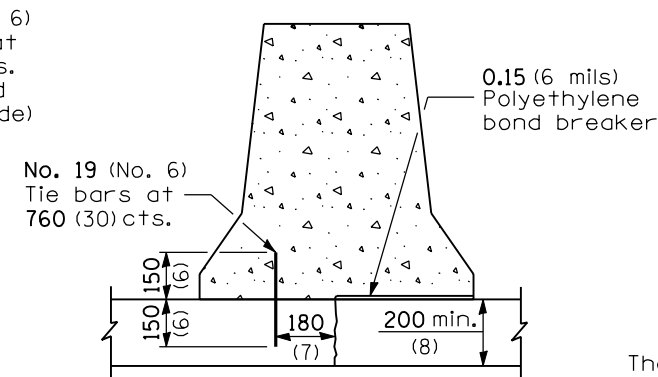
* This dimension shall be 250 (10) minimum when the barrier is confined by earth.



NEW OR EXISTING BIT./PCC BASE WITH OVERLAY CONFINEMENT



NEW OR EXISTING PCC BASE



EXISTING PCC BASE WITH LONGITUDINAL JOINT

GENERAL NOTES

The Variable End Section shall be used when there is a difference in elevation between the two sides of the barrier.

When electrical conduits are involved, they shall be located either in the barrier base or in the earth below.

All dimensions are in millimeters (inches) unless otherwise shown.

ANCHORING METHODS

DATE	REVISIONS
1-1-04	New Standard

**CONCRETE BARRIER,
DOUBLE FACE,
1065 mm (42 in.) HEIGHT**
(Sheet 1 of 2)

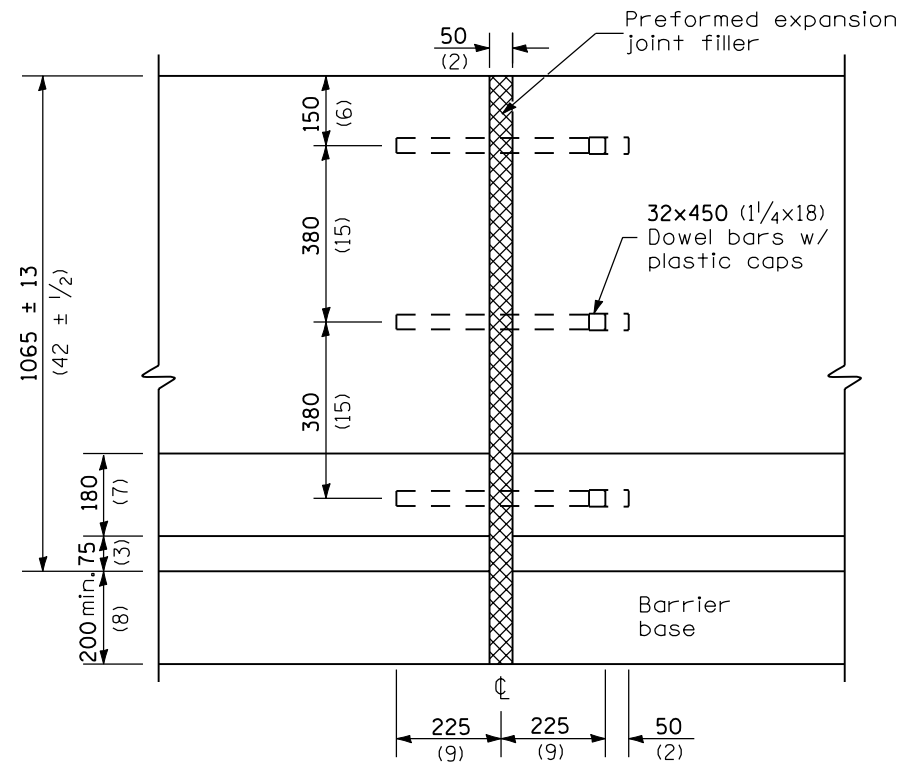
STANDARD 637006

Illinois Department of Transportation

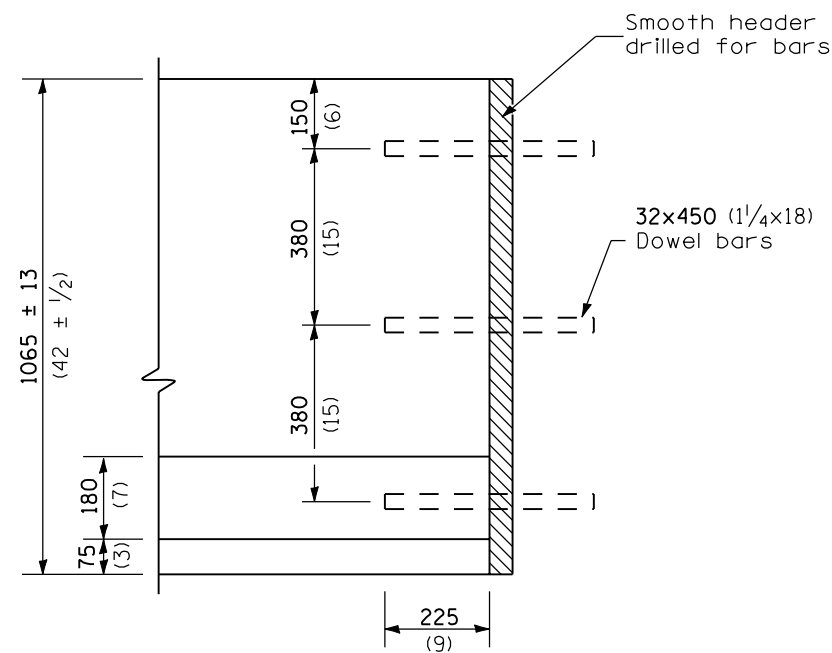
PASSED January 1, 2004
Michael Brand
ENGINEER OF POLICY AND PROCEDURES

APPROVED January 1, 2004
Michael L. Hine
ENGINEER OF DESIGN AND ENVIRONMENT

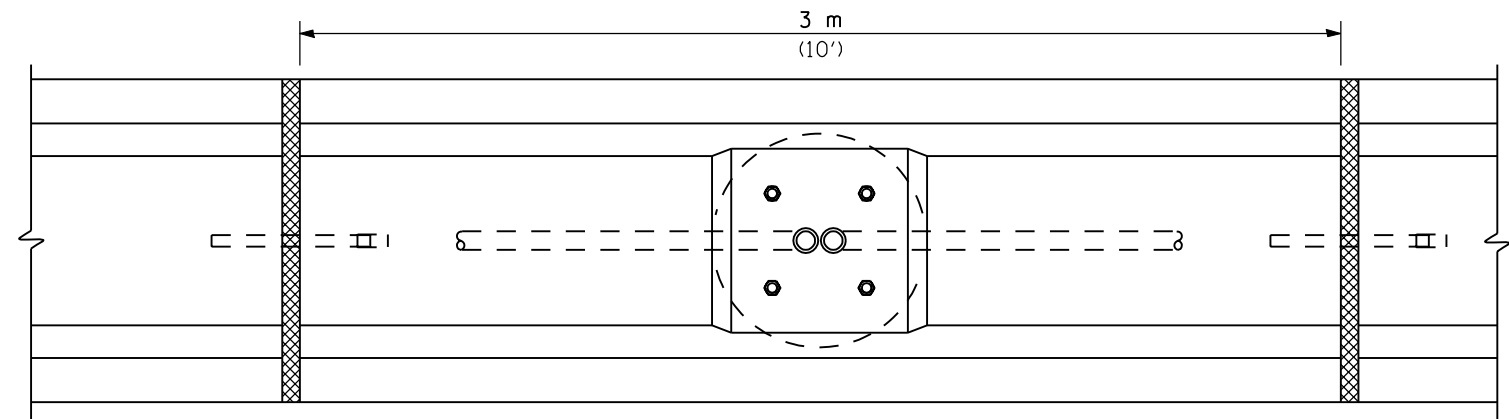
ISSUED 1-1-04



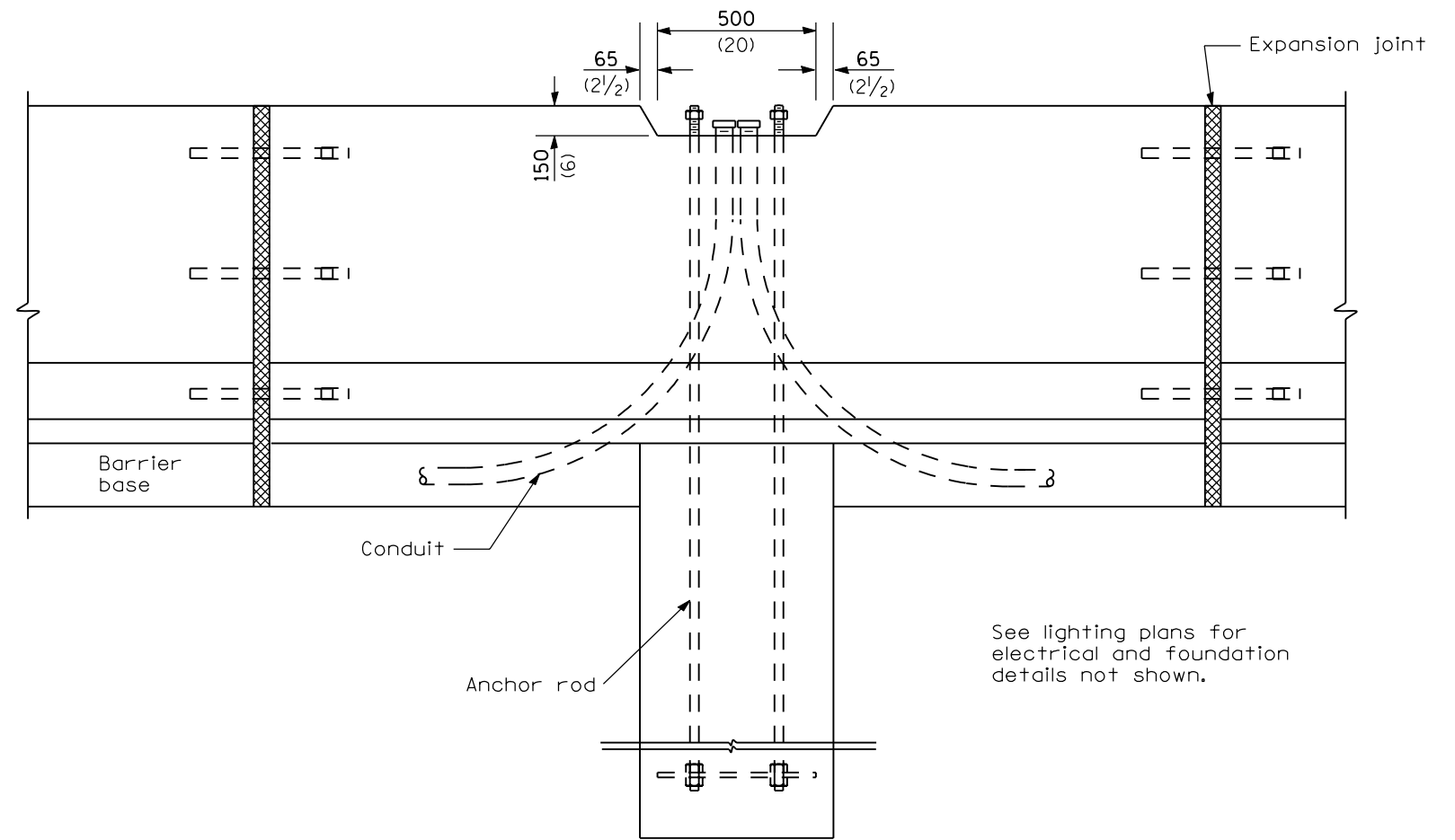
EXPANSION JOINT



CONSTRUCTION JOINT



PLAN AT LIGHTING FOUNDATION



ELEVATION AT LIGHTING FOUNDATION

All dimensions are in millimeters (inches) unless otherwise shown.

**CONCRETE BARRIER,
DOUBLE FACE,
1065 mm (42 in.) HEIGHT**
(Sheet 2 of 2)

STANDARD 637006

Illinois Department of Transportation

PASSED January 1, 2004
Michael Brand
 ENGINEER OF POLICY AND PROCEDURES

APPROVED January 1, 2004
Michael L. Hine
 ENGINEER OF DESIGN AND ENVIRONMENT

ISSUED
 PD-1-1 GENISS