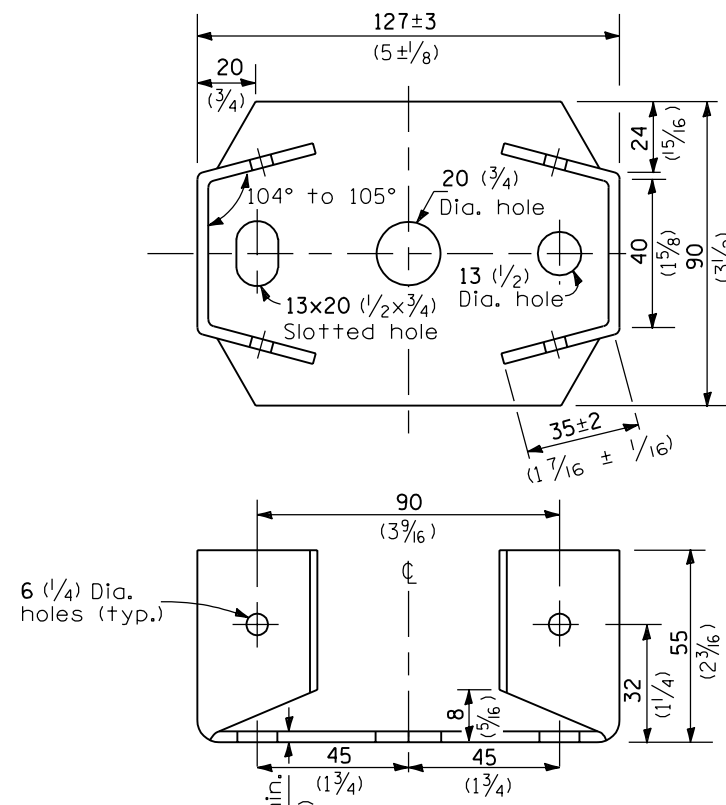
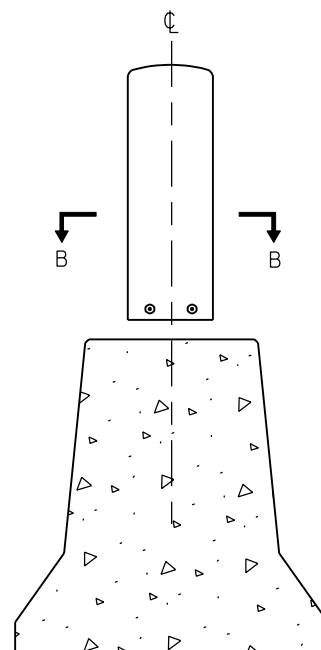


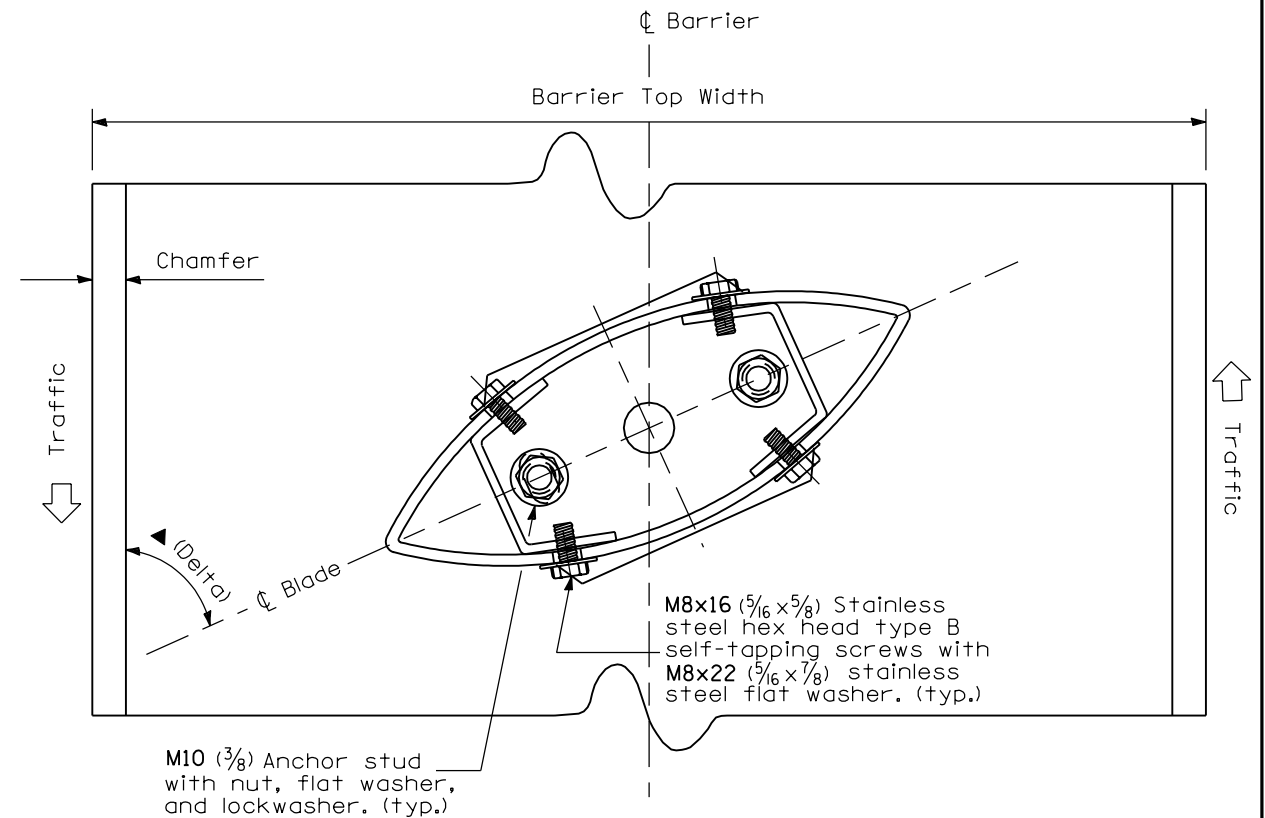
**SECTION A-A
BLADE DETAIL**



BASE PLATE DETAILS



TYPICAL INSTALLATION DETAIL



SECTION B-B

MAXIMUM INSTALLATION ANGLE	
Barrier Top Width	Δ (Delta)
230 (9)	65°
430 (17)	70°
480 (19)	70°

GENERAL NOTES

The height, spacing, and installation angle of the glare screen blades shall be as shown on the plans.

All dimensions are in millimeters (inches) unless otherwise shown.

Illinois Department of Transportation

PASSED January 1, 2004
Michael Brand
 ENGINEER OF POLICY AND PROCEDURES

APPROVED January 1, 2004
Michael L. Hine
 ENGINEER OF DESIGN AND ENVIRONMENT

ISSUED 1-1-97

DATE	REVISIONS
1-1-04	Revised max. installation angles to fit F shape barrier.
1-1-97	Renum. Standard 2392-1. Deleted DN Symbol.

GLARE SCREEN BLADES

STANDARD 638001-01