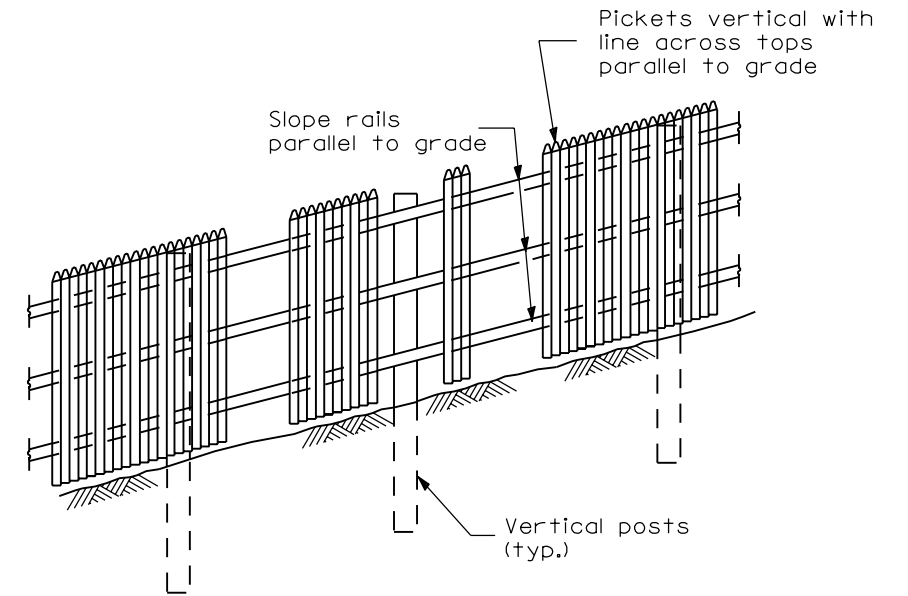
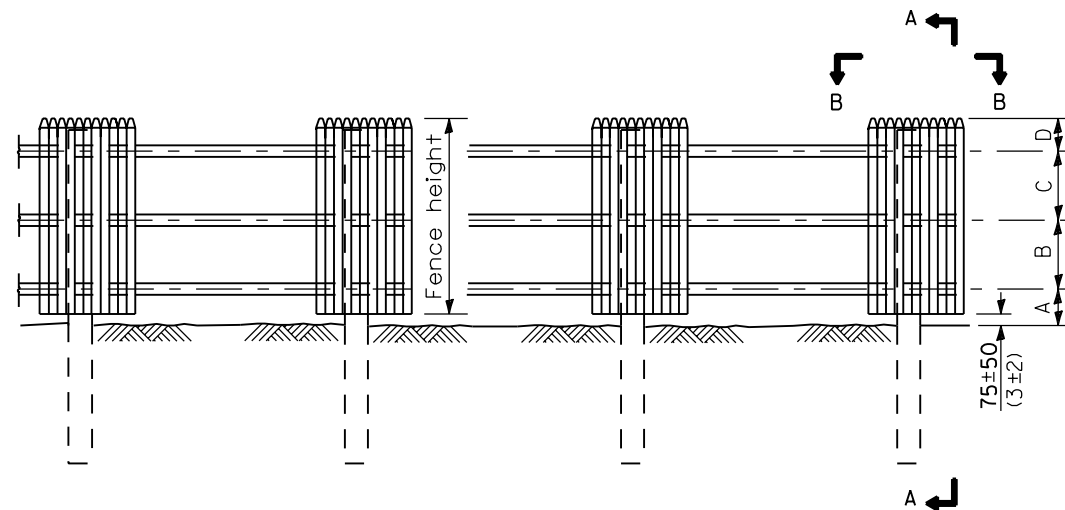


PLAN
(Facing highway)

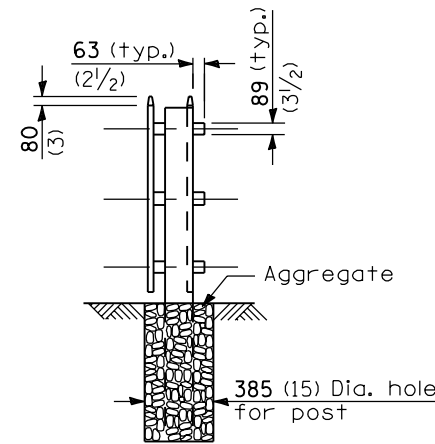
| | FENCE HEIGHT | |
|-----------------|-------------------|-------------------|
| | 1.8 m (6'-0") | 2.4 m (8'-0") |
| Post cross sec. | 140x184 (6x8) | 184x184 (8x8) |
| Post length | 3.0 m (10'-0") | 4.3 m (14'-0") |
| Post embedment | 1.2 m (4'-0") | 1.8 m (6'-0") |
| A | 380 (15) | 460 (18) |
| B | 600 (24) | 870 (33) |
| C | 600 (24) | 870 (33) |
| D | 300 (12) | 380 (15) |



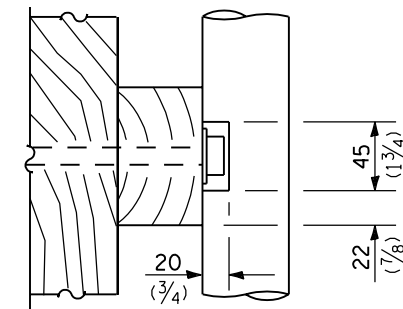
ELEVATION
(Showing treatment with sloping ground)



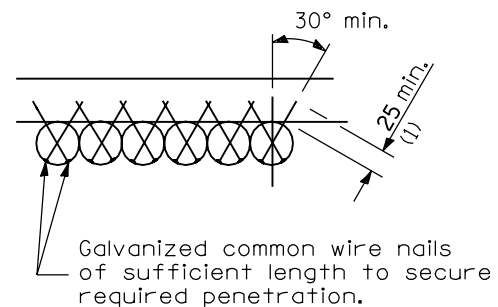
ELEVATION



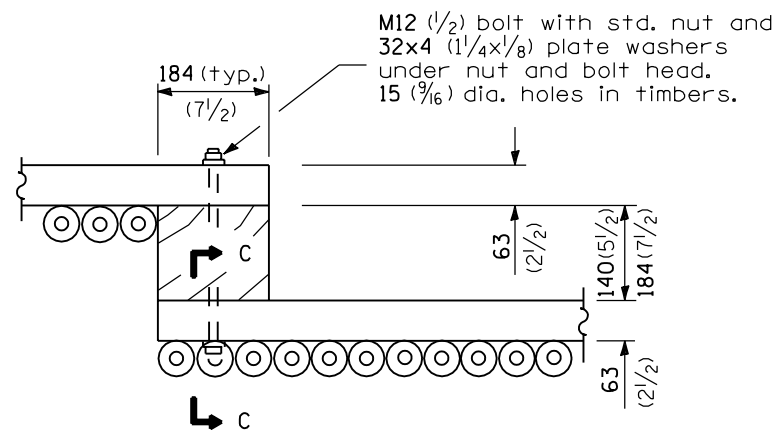
SEC. A-A



SECTION C-C



DETAIL A
(Showing typical picket to rail attachment)



SECTION B-B
(Showing typical panel to post connection at each rail.)

GENERAL NOTES

Loading was based on 130 km/h (80 mph) with 30% gust factor. Minimum allowable soil pressure = 120 kPa (1.25 tsf).

Timber sizes given are dry dressed (nominal) sizes.

All dimensions are in millimeters (inches) unless otherwise shown.

| DATE | REVISIONS |
|---------|-------------------------|
| 1-1-97 | Renum. Standard 2367-3. |
| | Deleted DN Symbol. |
| 11-1-94 | Rev. GENERAL NOTES. |
| | Added table of dim. |

**SIGHT SCREEN
CEDAR STOCKADE FENCE
TYPE S**

STANDARD 641001

Illinois Department of Transportation

APPROVED January 1, 1997
Ralph E. Anderson
ENGINEER OF BRIDGES AND STRUCTURES

APPROVED January 1, 1997
Ray Stoddard
ENGINEER OF DESIGN AND ENVIRONMENT

ISSUED 1-1-97