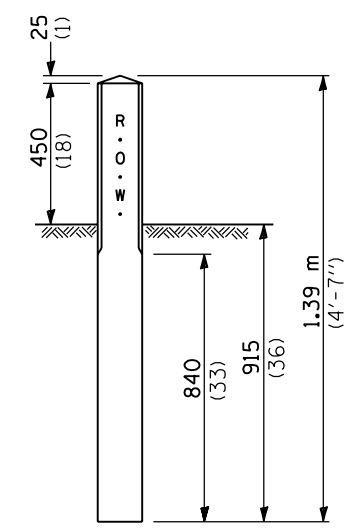
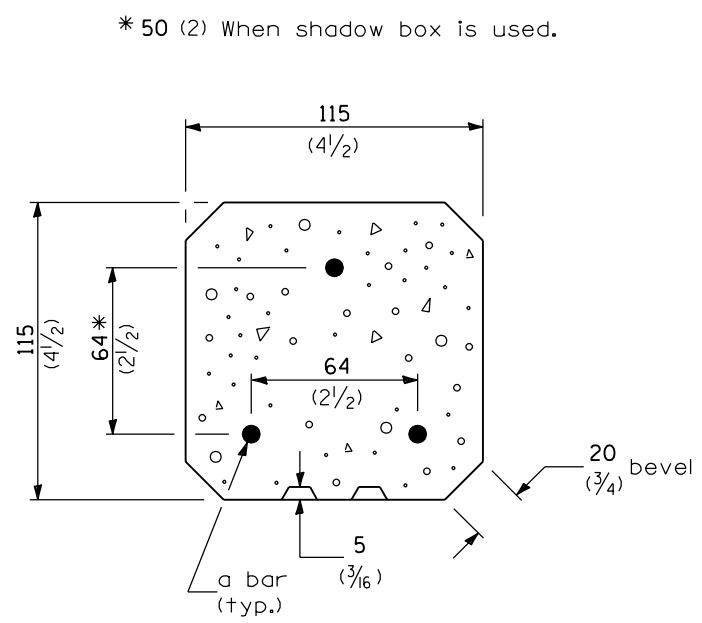


METHOD B

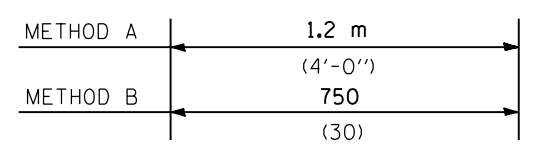
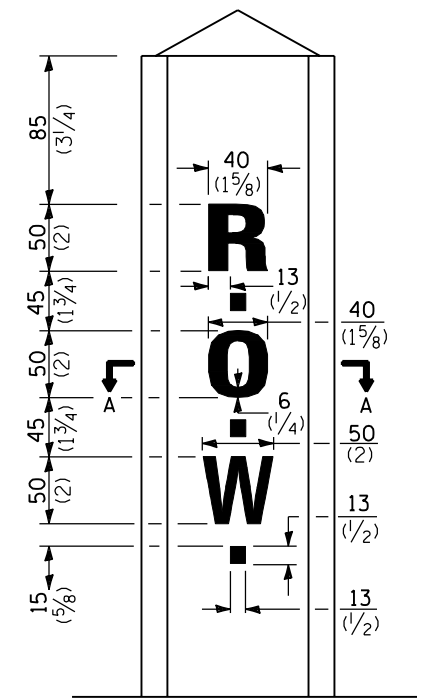


METHOD A



* 50 (2) When shadow box is used.

SECTION A-A



a BAR

GENERAL NOTE
 Reinforcement bars shall be No. 10 (No. 3) unless otherwise specified.
 A 70x310 mm (2 3/4"x12 1/8") shadow box with beveled edges, and a 5 mm (3/16") thick indentation may be used with the standard lettering shown.
 All dimensions are in millimeters (inches) unless otherwise shown.

Illinois Department of Transportation
 PASSED January 1, 1997
 ENGINEER OF POLICY AND PROCEDURES
 APPROVED January 1, 1997
 ENGINEER OF DESIGN AND ENVIRONMENT

DATE	REVISIONS
1-1-97	Renum. Standard 1744-6.
11-1-93	Moved G.N. to Specs. Added Metric.

**RIGHT OF WAY
 MARKERS**

STANDARD 666001