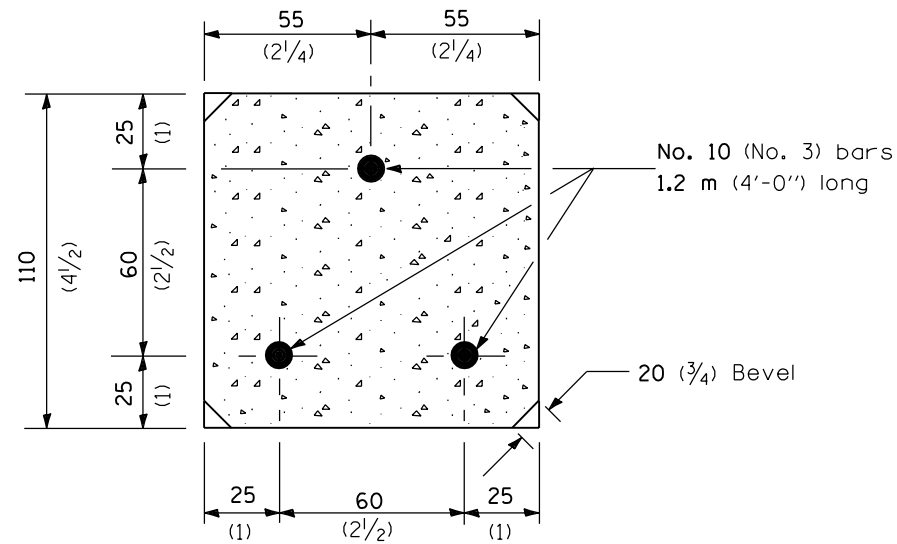
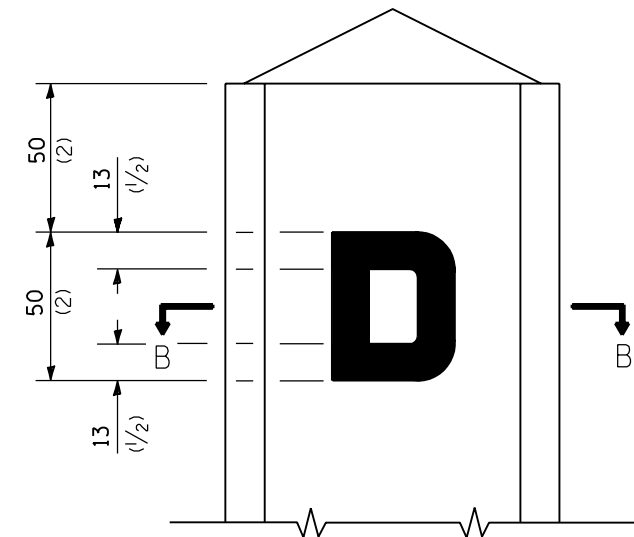


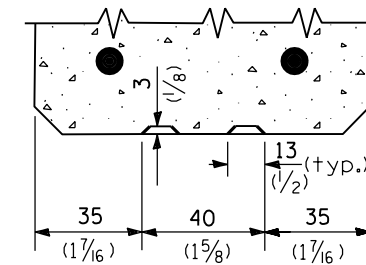
FRONT ELEVATION



SECTION A-A



DETAIL OF LETTER



SECTION B-B

All dimensions are in millimeters (inches) unless otherwise shown.

Illinois Department of Transportation

PASSED January 1, 1997

ENGINEER OF POLICE AND PROCEDURES

APPROVED January 1, 1997

ENGINEER OF DESIGN AND ENVIRONMENT

16-1-1 03/SSS

DATE	REVISIONS
1-1-97	Renum. Standard 1999-4.
6-15-94	Moved G.N. to Specs. Added Metric.

DRAINAGE MARKERS

STANDARD 667001