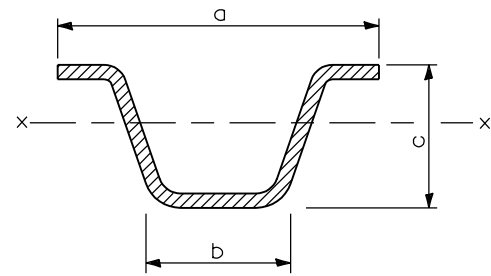
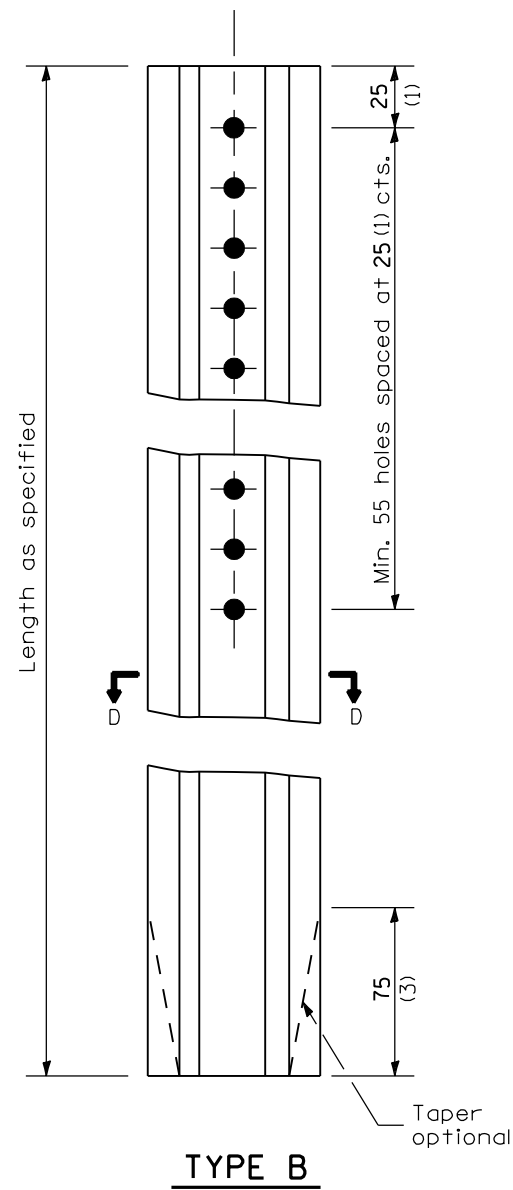


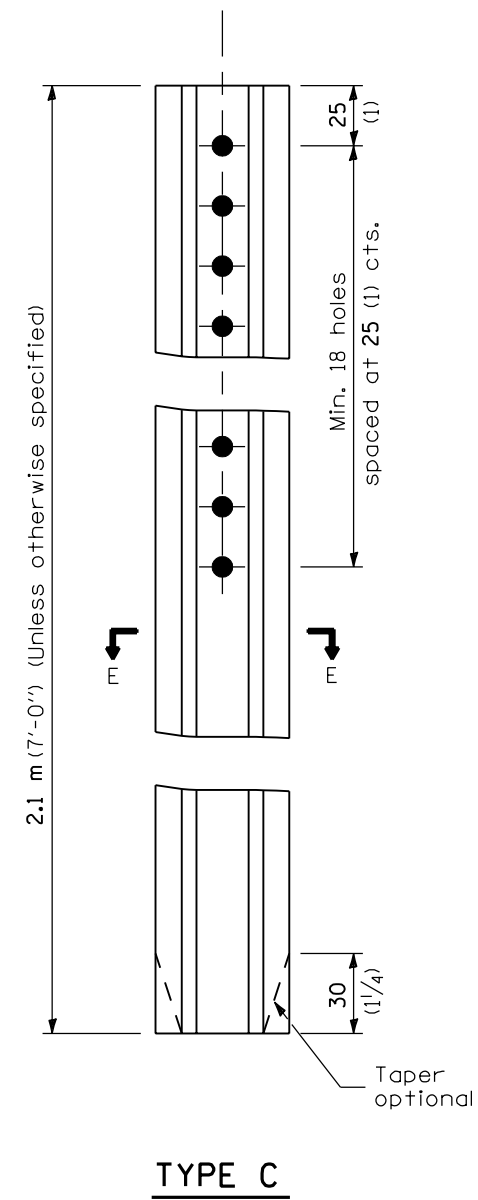
**TYPE A**



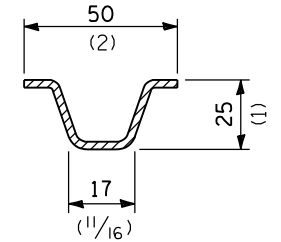
**SECTION D-D**



**TYPE B**



**TYPE C**



**SECTION E-E**

Steel - 1.67 kg/m  
(1.12 lbs./ft.)

		a	b	c	S <sub>x-x</sub> mm <sup>3</sup> (in. <sup>3</sup> )	kg/m (lbs./ft.)
TYPE A	Steel	78 (3 1/16)	32 (1 1/4)	37 (1 1/16)	3,654 (0.223)	2.98 (2.00)
	Aluminum	89 (3 1/2)	41 (1 5/8)	48 (1 7/8)	7,128 (0.435)	1.34 (0.90)
TYPE B	Steel	81 (3 3/16)	32 (1 1/4)	38 (1 1/2)	5,588 (0.341)	4.46 (3.00)
	Aluminum	118 (4 5/8)	57 (2 1/4)	60 (2 3/8)	14,552 (0.888)	1.93 (1.30)

**GENERAL NOTES**

Dimensions shown for cross sections are minimum.

All holes are 10 mm (3/8") diameter.

S<sub>x-x</sub> is the minimum section modulus about the x-x axis of the post as shown. For posts in which holes are punched or drilled for more than half their length, S<sub>x-x</sub> shall be computed for the net section.

All dimensions are in millimeters (inches) unless otherwise shown.

DATE	REVISIONS
1-1-97	Renum. Standard 2350-4.
6-15-94	Added Metric.

**METAL POSTS FOR  
SIGNS, MARKERS &  
DELINEATORS**

**STANDARD 720011**

Illinois Department of Transportation

PASSED January 1, 1997

ENGINEER OF POLICE AND PROCEDURES

APPROVED January 1, 1997

ENGINEER OF DESIGN AND ENVIRONMENT

ISSUED 1-1-97