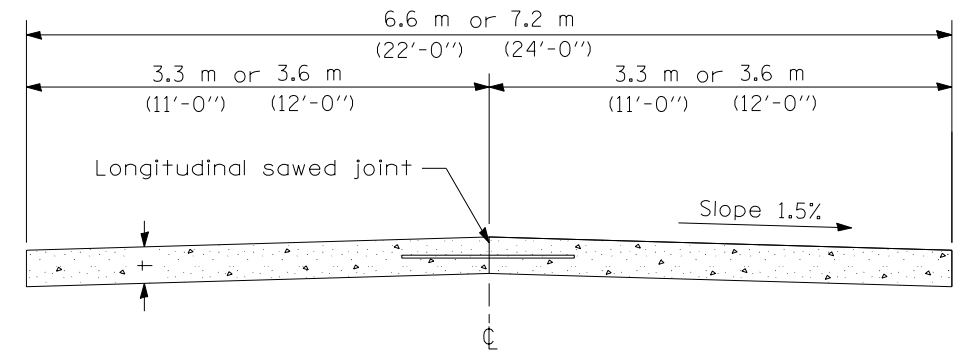
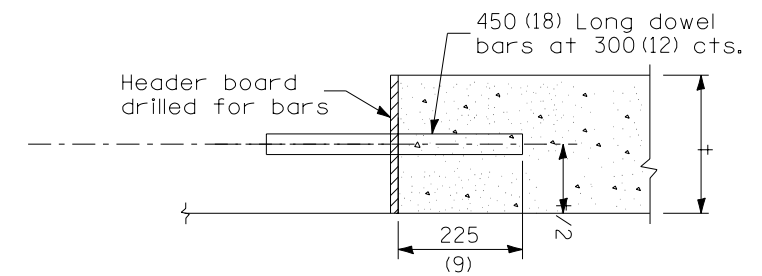


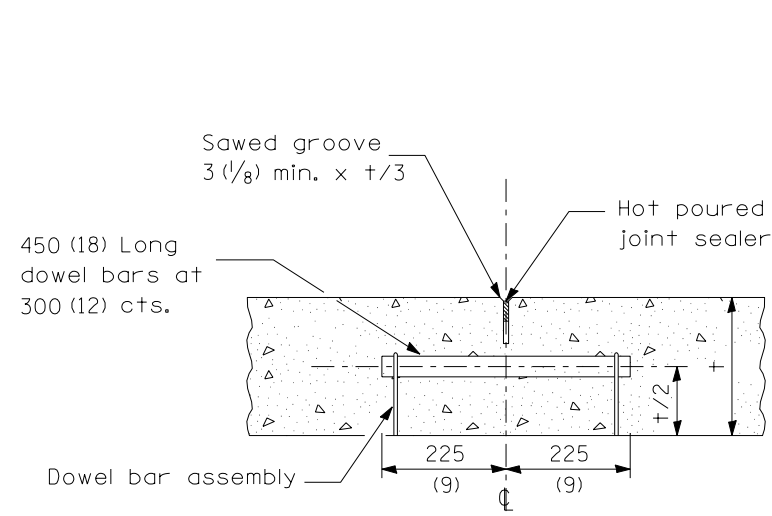
PLAN OF PAVEMENT



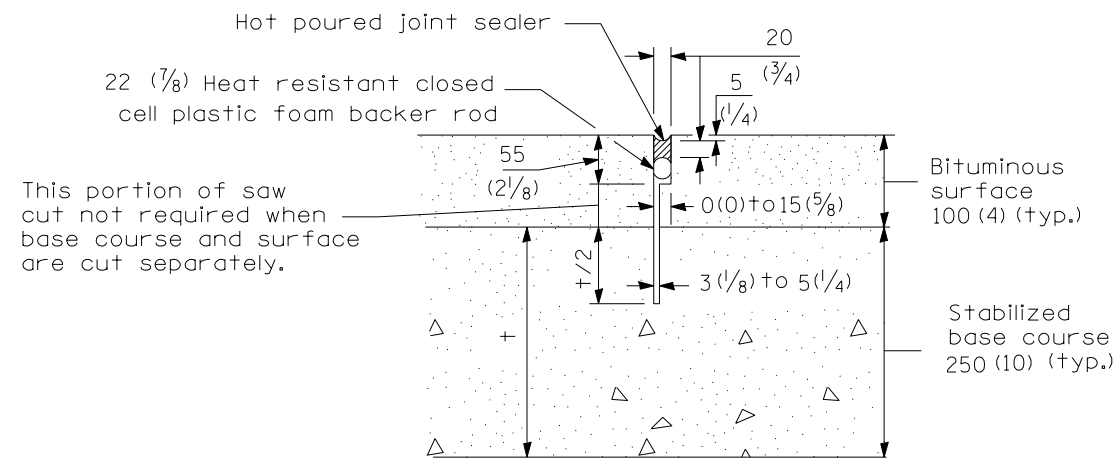
CROSS SECTION OF PAVEMENT



TRANSVERSE CONSTRUCTION JOINT



TRANSVERSE CONTRACTION JOINT



TRANSVERSE CONTRACTION JOINT

(For CAM, CFA and LFA Base Course Mixtures)

DOWEL BAR TABLE	
PAVEMENT THICKNESS	DOWEL BAR DIAMETER
200 (8) or greater	38 (1 1/2)
175 (7) thru 199 (7.99)	32 (1 1/4)
Less than 175 (7)	25 (1)

**GENERAL NOTES**

See Standard 420001 for details of Transverse Expansion Joints, Longitudinal Sawed Joints and Longitudinal Construction Joints.

Skewed joints shall be used when specified by Special Provisions.

t = Pavement thickness (See Typical Cross Section)

All dimensions are in millimeters (inches) unless otherwise shown.

Illinois Department of Transportation

APPROVED January 1, 2005  
*Charles J. Ross*  
 ENGINEER OF LOCAL ROADS AND STREETS

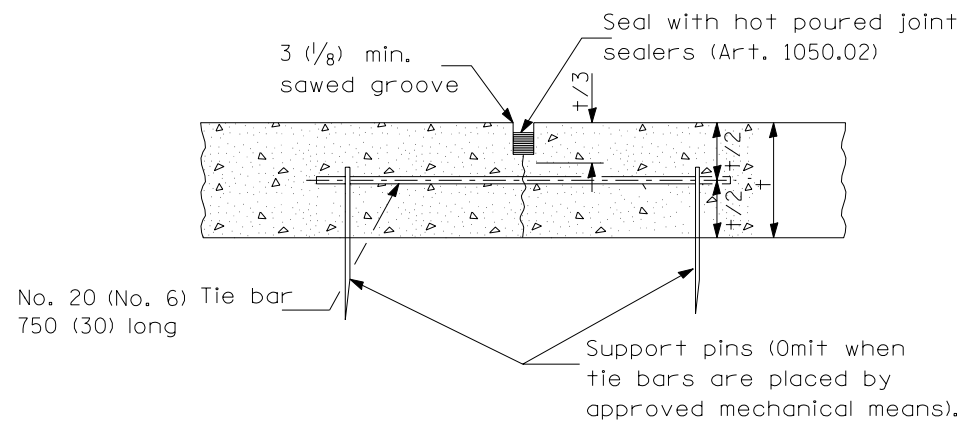
APPROVED January 1, 2005  
*Michael S. Hine*  
 ENGINEER OF DESIGN AND ENVIRONMENT

ISSUED 1-1-97

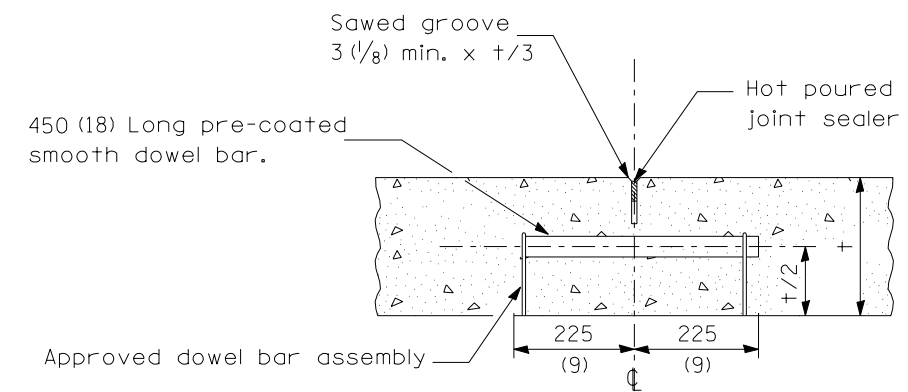
DATE	REVISIONS
1-1-05	Minor joint corrections and revised general notes.
1-1-00	Revised all pavement joint details

**PORTLAND CEMENT CONCRETE PAVEMENT**  
 (NONREINFORCED) (Sheet 1 of 2)

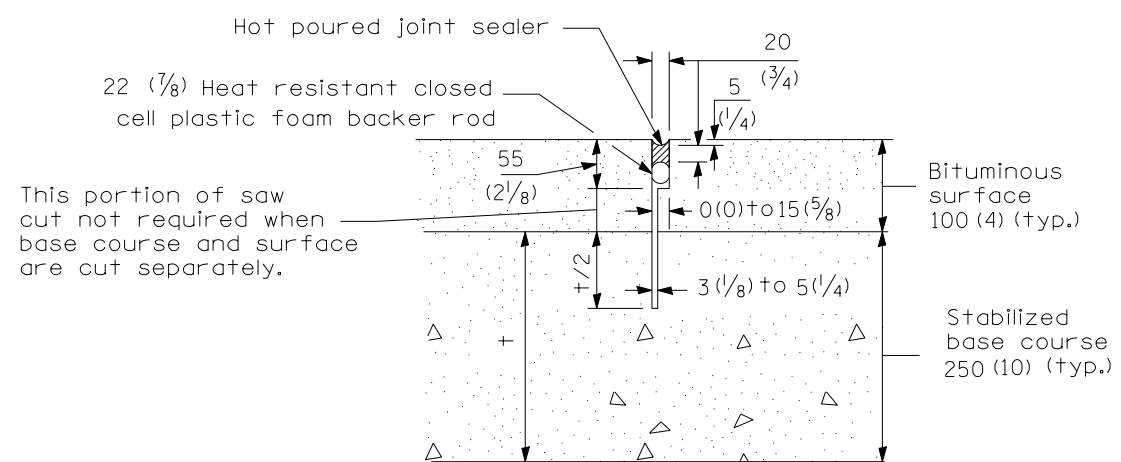
**STANDARD B.L.R. 14-8**



SAWED LONGITUDINAL JOINT



SAWED CONTRACTION JOINT



TRANSVERSE CONTRACTION JOINT

(For CAM, CFA and LFA Base Course Mixtures)

All dimensions are in millimeters (inches) unless otherwise shown.

Illinois Department of Transportation

APPROVED January 1, 2000  
*Charles J. Rossini*  
ENGINEER OF LOCAL ROADS AND STREETS

APPROVED January 1, 2000  
*Michael S. Hine*  
ENGINEER OF DESIGN AND ENVIRONMENT

ISSUED 1-1-97

PORTLAND CEMENT  
CONCRETE PAVEMENT  
(NONREINFORCED) (Sheet 2 of 2)

**STANDARD B.L.R. 14-8**