

F.A.P. RTE.	SECTION	COUNTY	TOTAL SHEETS	SHEET NO.
350	50-1 VB-1-BR	COOK	23	1
FED. ROAD DIST. NO.	ILLINOIS	CONTRACT NO. 60H76		

STATE OF ILLINOIS
DEPARTMENT OF TRANSPORTATION
DIVISION OF HIGHWAYS

PROPOSED
HIGHWAY PLANS

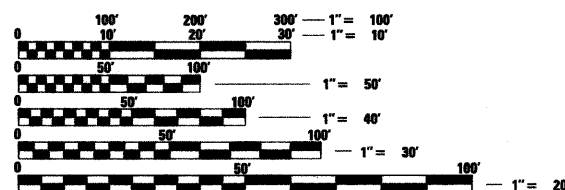
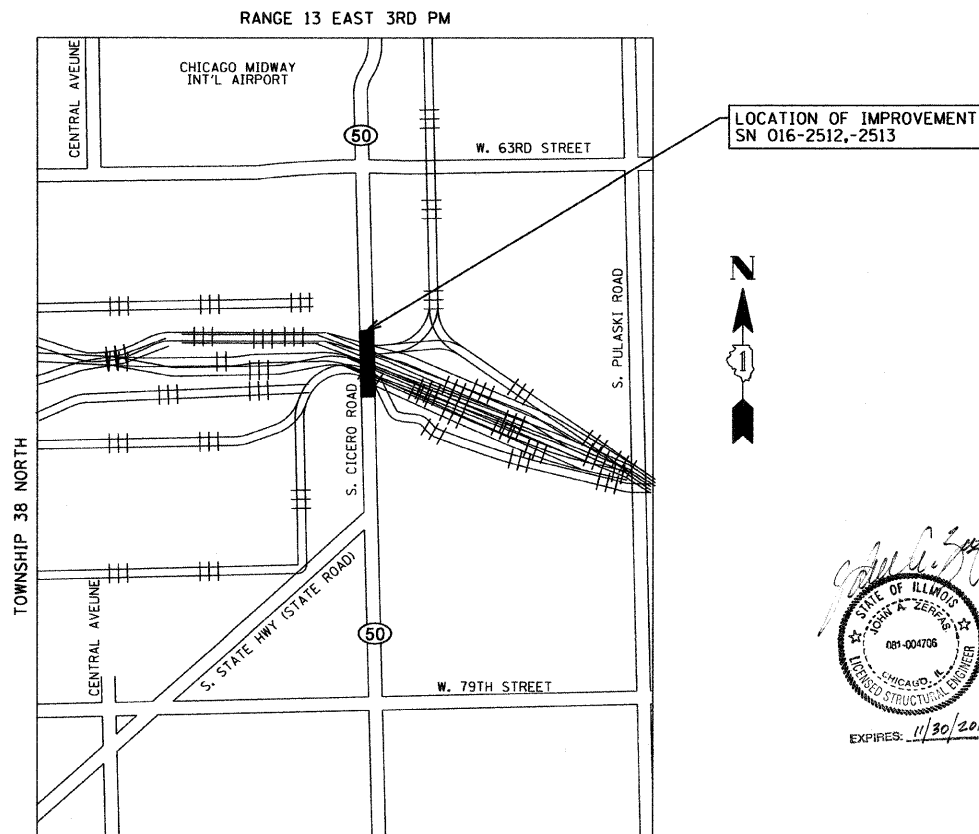
FAP ROUTE 350: IL 50 (CICERO AVE)
SECTION: 50-1 VB-1-BR
OVER BRC RR (SN 016-2512, -2513)
BRIDGE JOINT RECONSTRUCTION AND
SUBSTRUCTURE REPAIRS
COOK COUNTY
C-91-789-09

FOR INDEX OF SHEETS, SEE SHEET NO. 2

TRAFFIC DATA

EXISTING ADT = 47,900 TO 61,000 (2007)
 POSTED SPEED LIMIT = 35 MPH

THE PROJECT IS LOCATED IN THE CITY OF CHICAGO AND IN THE VILLAGE OF BEDFORD PARK.



FULL SIZE PLANS HAVE BEEN PREPARED USING STANDARD ENGINEERING SCALES. REDUCED SIZED PLANS WILL NOT CONFORM TO STANDARD SCALES. IN MAKING MEASUREMENTS ON REDUCED PLANS, THE ABOVE SCALES MAY BE USED.

J.U.L.I.E.
 JOINT UTILITY LOCATION INFORMATION
 FOR EXCAVATION 1-800-892-0123 OR 811
 D.I.G.O.E.R. FOR EXCAVATION IN THE
 CITY OF CHICAGO AT 1-312-744-7000

PROJECT ENGINEER: ROBERT BORO (IDOT) (847) 705-4178
 PROJECT MANAGER: KEN ENG (IDOT) 847-705-4247

CONTRACT NO. 60H76

GROSS & NET LENGTH OF IMPROVEMENT: 669 FT (0.13 MILES)



GRÄEF
 8501 W. Higgins Road, Suite 280
 Chicago, Illinois 60631
 (773) 399-0112

STATE OF ILLINOIS
 DEPARTMENT OF TRANSPORTATION
 DIVISION OF HIGHWAYS

SUBMITTED October 16, 2009

Devin M. O'Keefe
 DEPUTY DIRECTOR OF HIGHWAYS, REGION ENGINEER

December 4, 2009
Charles J. Ingersoll
 ENGINEER OF DESIGN AND ENVIRONMENT

December 4, 2009
Christine M. Reed
 DIRECTOR OF HIGHWAYS, CHIEF ENGINEER

**PRINTED BY THE AUTHORITY
 OF THE STATE OF ILLINOIS**