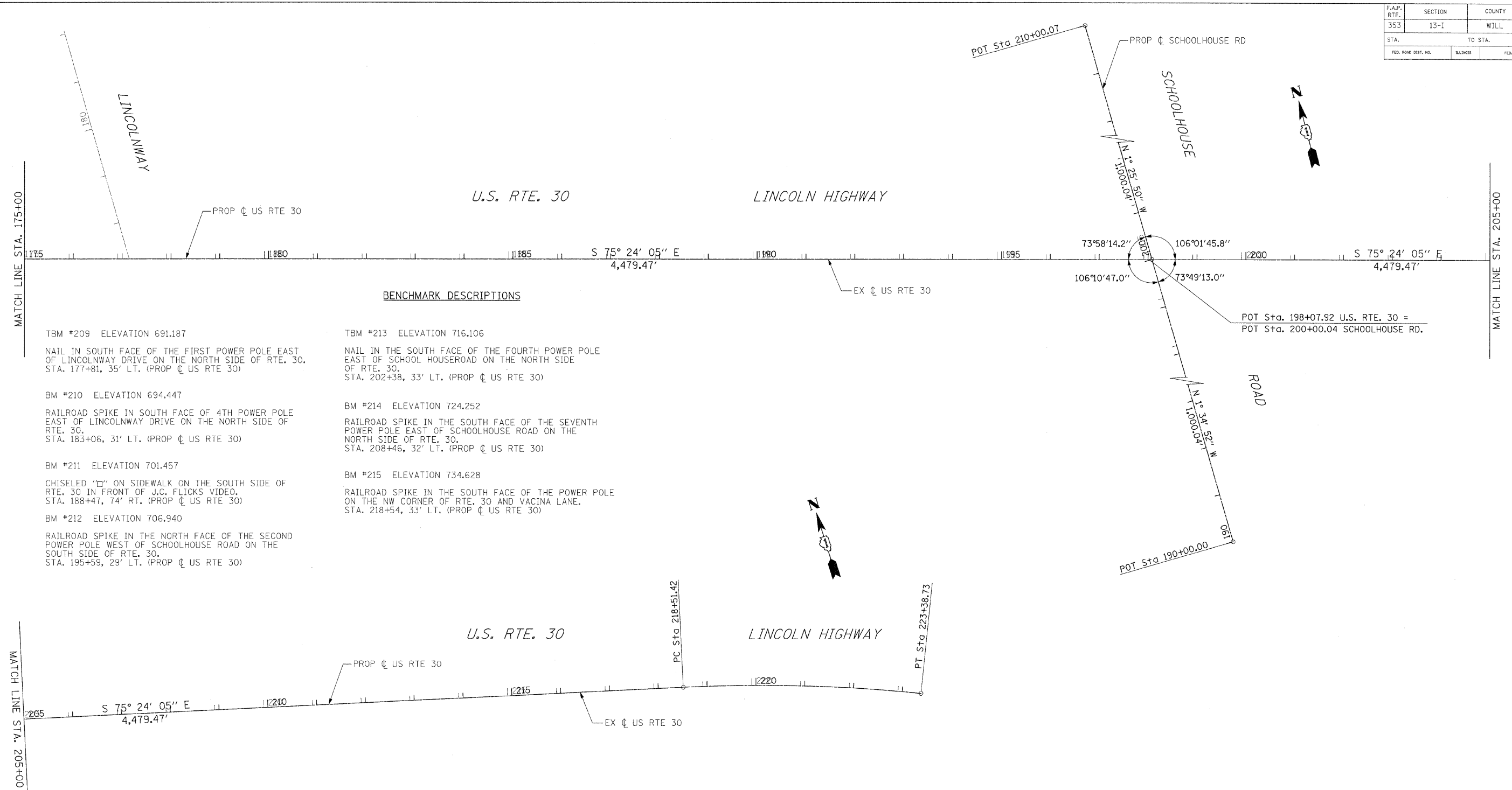


F.A.P. RTE.	SECTION	COUNTY	TOTAL SHEETS	SHEET NO.
353	13-1	WILL	67	12
STA.		TO STA.		
FED. ROAD DIST. NO.	ILLINOIS	FED. AID PROJECT		



BENCHMARK DESCRIPTIONS

- | | |
|--|---|
| <p>TBM #209 ELEVATION 691.187
NAIL IN SOUTH FACE OF THE FIRST POWER POLE EAST OF LINCOLNWAY DRIVE ON THE NORTH SIDE OF RTE. 30. STA. 177+81, 35' LT. (PROP. CL US RTE 30)</p> <p>BM #210 ELEVATION 694.447
RAILROAD SPIKE IN SOUTH FACE OF 4TH POWER POLE EAST OF LINCOLNWAY DRIVE ON THE NORTH SIDE OF RTE. 30. STA. 183+06, 31' LT. (PROP. CL US RTE 30)</p> <p>BM #211 ELEVATION 701.457
CHISELED "□" ON SIDEWALK ON THE SOUTH SIDE OF RTE. 30 IN FRONT OF J.C. FLICKS VIDEO. STA. 188+47, 74' RT. (PROP. CL US RTE 30)</p> <p>BM #212 ELEVATION 706.940
RAILROAD SPIKE IN THE NORTH FACE OF THE SECOND POWER POLE WEST OF SCHOOLHOUSE ROAD ON THE SOUTH SIDE OF RTE. 30. STA. 195+59, 29' LT. (PROP. CL US RTE 30)</p> | <p>TBM #213 ELEVATION 716.106
NAIL IN THE SOUTH FACE OF THE FOURTH POWER POLE EAST OF SCHOOL HOUSE ROAD ON THE NORTH SIDE OF RTE. 30. STA. 202+38, 33' LT. (PROP. CL US RTE 30)</p> <p>BM #214 ELEVATION 724.252
RAILROAD SPIKE IN THE SOUTH FACE OF THE SEVENTH POWER POLE EAST OF SCHOOLHOUSE ROAD ON THE NORTH SIDE OF RTE. 30. STA. 208+46, 32' LT. (PROP. CL US RTE 30)</p> <p>BM #215 ELEVATION 734.628
RAILROAD SPIKE IN THE SOUTH FACE OF THE POWER POLE ON THE NW CORNER OF RTE. 30 AND VACINA LANE. STA. 218+54, 33' LT. (PROP. CL US RTE 30)</p> |
|--|---|

PROP. U.S. RTE. 30 COORDINATE DATA

POINT	NORTHING	EASTING
POT 198+07.92	1,764,596.21	1,095,533.30
P.C. 218+51.42	1,764,081.15	1,097,510.82
P.T. 223+38.73	1,763,923.75	1,097,971.54
P.C. 224+88.74	1,763,864.83	1,098,109.50

PROP. SCHOOLHOUSE RD. COORDINATE DATA

POINT	NORTHING	EASTING
POT 190+00.00	1,763,596.55	1,095,560.89
POT 200+00.04	1,764,596.21	1,095,533.30
POT 210+00.07	1,765,595.93	1,095,508.33

PROP. CURVE CLUS30-2

PI STA. = 220+95.53
 Δ = 8° 31' 39" (RT)
 D = 1° 45' 00"
 R = 3,274.22'
 T = 244.11'
 L = 487.32'
 E = 9.09'
 e = 0.0256
 T.R. = 117.19'
 S.E. RUN = 150.01'
 P.C. STA = 218+51.42
 P.T. STA = 223+38.73

REVISIONS	
NAME	DATE

ILLINOIS DEPARTMENT OF TRANSPORTATION
ALIGNMENT, TIES & BENCHMARKS
 U.S. RTE. 30 (LINCOLN HIGHWAY)

SCALE : 1" = 100'
 DATE : / /

DRAWN BY : BAE
 CHECKED BY : GB