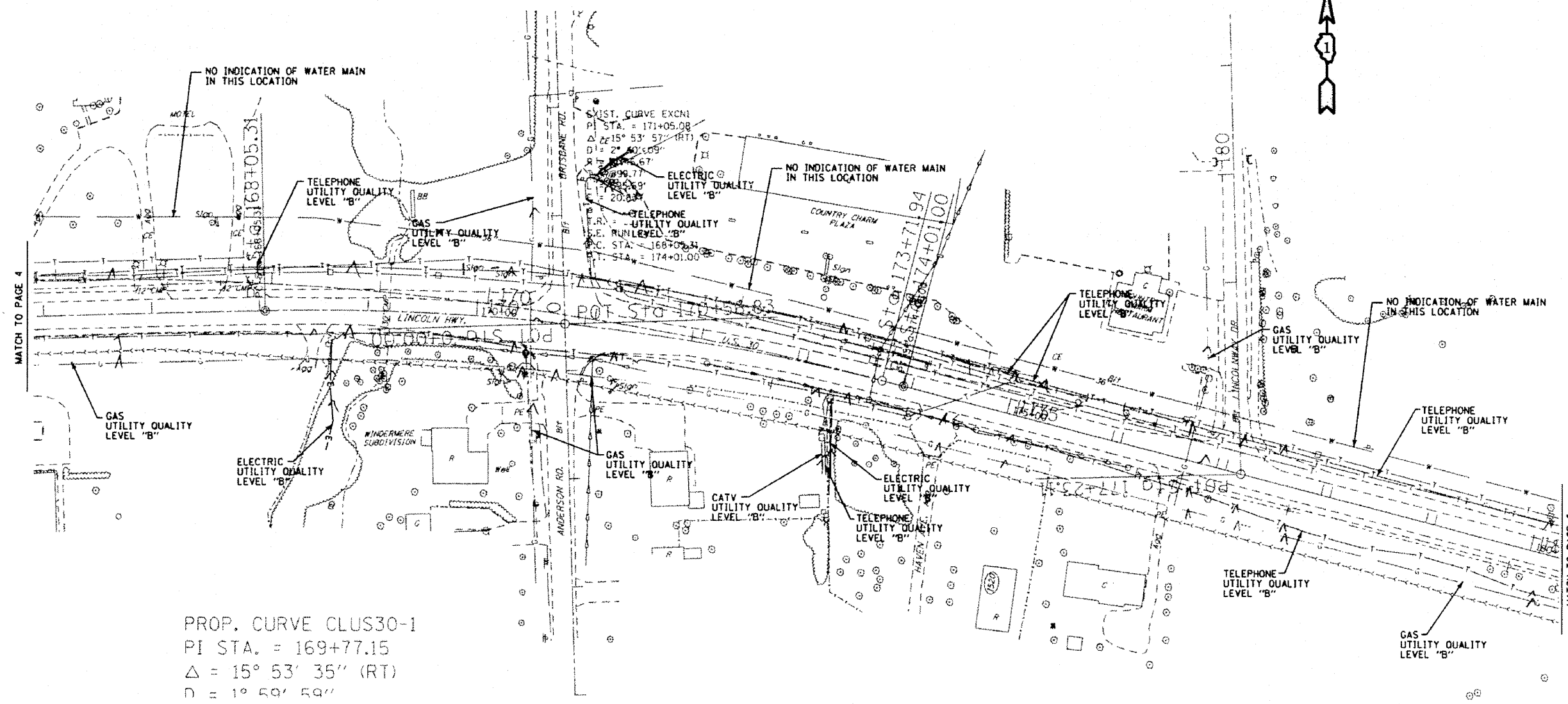
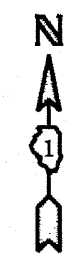


SECTION	COUNTY	TOTAL SHEETS	SHEET NO.
112 & 131 WRS-3	WIN	67	37
STA.	TO STA.		
FED. ROAD DIST. NO.	ILLINOIS FED. AID PROJECT		



PROP. CURVE CLUS30-1  
 PI STA. = 169+77.15  
 $\Delta = 15^\circ 53' 35''$  (RT)  
 $D = 1^\circ 59' 59''$

—T—T—T—	TELEPHONE
—W—W—W—	WATER
—G—G—G—	GAS
—CTV—CTV—CTV—	CABLE TELEVISION
—FO—FO—FO—	FIBER OPTIC
—E—E—E—	ELECTRIC

The SBC locations depicted have been obtained through the application of geophysical methods to determine the existence and approximate horizontal position of these facilities. However, SBC will not provide TBE Group, Inc. with utility records nor allow access to their field closures (pedestals/manholes etc.) to help verify the locations of their existing underground facilities. Therefore, TBE is unable to verify the completeness of the SBC locations depicted in accordance with the CI/ASCE Standard 38-02.

**TBE GROUP, INC.**  
 CIVIL ENGINEERING • TRANSPORTATION • ENVIRONMENTAL  
 • PLANNING • UTILITY ENGINEERING • LOCATING

IL09500213, 222, 233  
 Checked by: *[Signature]*  
 PAGE 5 OF 25  
 Utility Quality Level "B" : Designating

Utility shown on these plans as depicted in the legend have been investigated by TBE Group, Inc in accordance with SUE Industry Standards. All other information shown has been provided to TBE Group, Inc by others. TBE's SUE field investigation was performed during the period 10-13-04 through 04-21-05. Changes to utilities after these dates may have been made and therefore may result in variances from this plan. Consideration should be given to updating this plan if deemed advisable prior to final design and construction.



205 W. WACKER DRIVE  
 SUITE 1020  
 CHICAGO, IL 60606  
 (312) 704-1970

REVISIONS	
NAME	DATE

ILLINOIS DEPARTMENT OF TRANSPORTATION  
 US RT. 30 from William Street to Wolf  
 Road and US RT. 30 from Wolf Road to US  
 RT. 45 in Frankfort, Illinois-  
 Will County  
 Contract No: 62479  
 Section No.: 112 & 131 WRS-4  
 DRAWN BY - KLC  
 SCALE : 1" = 50'