

F.A.P. RTE.	SECTION	COUNTY	TOTAL SHEETS	SHEET NO.
344	543 X-RS-2	DUPAGE	30	1
FED. ROAD DIST. NO. 1	ILLINOIS	CONTRACT NO. 60J20		

D-91-207-10

STATE OF ILLINOIS
DEPARTMENT OF TRANSPORTATION
DIVISION OF HIGHWAYS
PROPOSED
HIGHWAY PLANS
F.A.P. 344: ILLINOIS ROUTE 83
WASHINGTON STREET TO ILLINOIS ROUTE 64
SECTION: 543 X-RS-2
RESURFACING (3P)
PROJECT: NHF-0344(053)
DUPAGE COUNTY
C-91-207-10

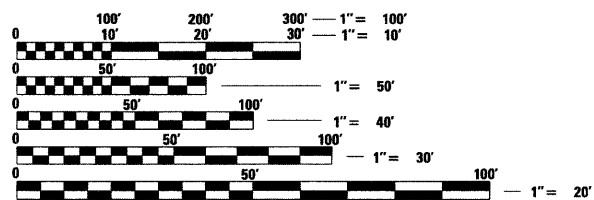
FOR INDEX OF SHEETS, SEE SHEET NO. 2

IMPROVEMENT LOCATED WITHIN THE CITY OF ELMHURST AND VILLAGE OF VILLA PARK



LOCATION OF SECTION INDICATED THUS: — ■ —

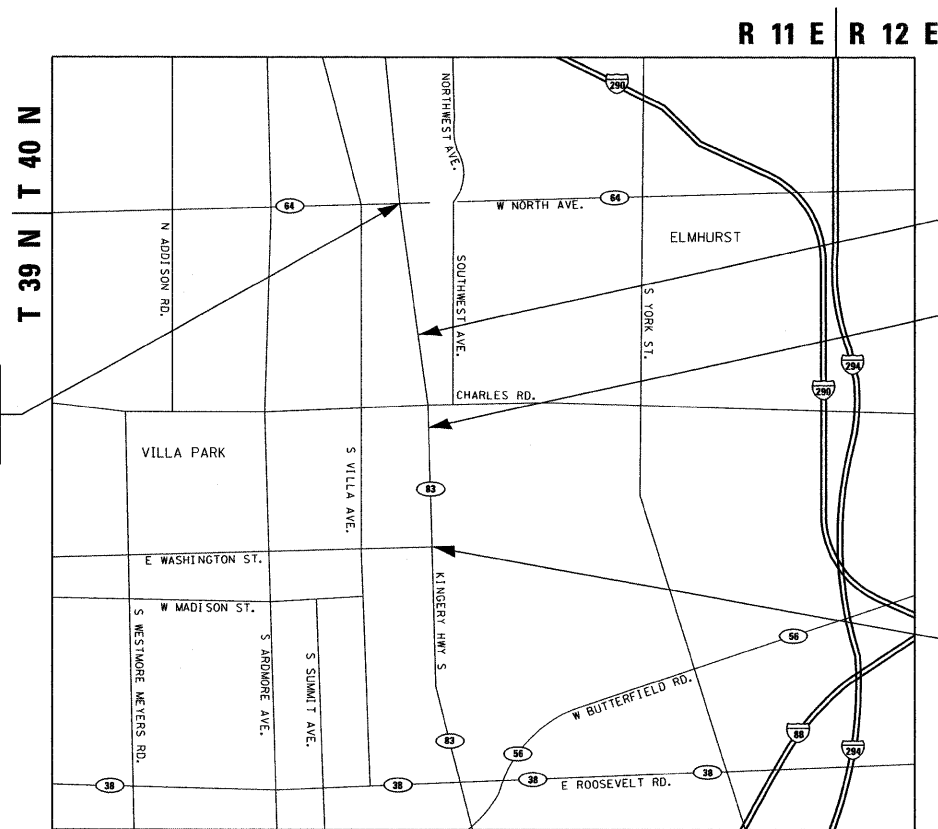
TRAFFIC DATA
ILLINOIS ROUTE 83
2007 ADT = 72,000
SPEED LIMIT = 45 MPH



FULL SIZE PLANS HAVE BEEN PREPARED USING STANDARD ENGINEERING SCALES. REDUCED SIZED PLANS WILL NOT CONFORM TO STANDARD SCALES. IN MAKING MEASUREMENTS ON REDUCED PLANS, THE ABOVE SCALES MAY BE USED.

J.U.L.I.E.
 JOINT UTILITY LOCATION INFORMATION FOR EXCAVATION
 1-800-892-0123
 OR 811

IMPROVEMENT ENDS
 STA. 771 + 19



SCALE: NTS

YORK TOWNSHIP

GROSS LENGTH OF PROJECT = 12,062 FT = 2.28 MILES
 NET LENGTH OF PROJECT = 11,794 FT = 2.23 MILES

OMISSION
 STA. 716 + 45 TO STA. 717 + 24

BRIDGE OMISSION
 STA. 688 + 27 TO STA. 690 + 16 (NB)
 STA. 688 + 56 TO STA. 690 + 31 (SB)

IMPROVEMENT BEGINS
 STA. 650 + 57.00

DISTRICT ONE - PLAN PREP ENGINEER: KEN ENG (847) 705-4247

CONTRACT NO. 60J20

STATE OF ILLINOIS
 DEPARTMENT OF TRANSPORTATION
 DIVISION OF HIGHWAYS

SUBMITTED FEBRUARY 16, 2010


Diana M. O'Keefe
 DEPUTY DIRECTOR OF HIGHWAYS, REGION ENGINEER

March 19, 2010

Scott E. Stitt, P.E.
 Acting ENGINEER OF DESIGN AND ENVIRONMENT

March 19, 2010

Christine M. Reed
 DIRECTOR OF HIGHWAYS, CHIEF ENGINEER




200 22ND Street, Suite 216, Lombard, IL 60148
 630.705.0110 voice, 630.839.2566 fax
 www.mps-il.com

MILLENNIA PROFESSIONAL SERVICES

MILLENNIA PROFESSIONAL SERVICES
 THOMAS V. NGO, P.E.
 * 062-058379

Thomas V. Ngo
 DATE: 2/16/2010
 SIGNATURE AND SEAL APPLIES TO DRWG.



**PRINTED BY THE AUTHORITY
 OF THE STATE OF ILLINOIS**