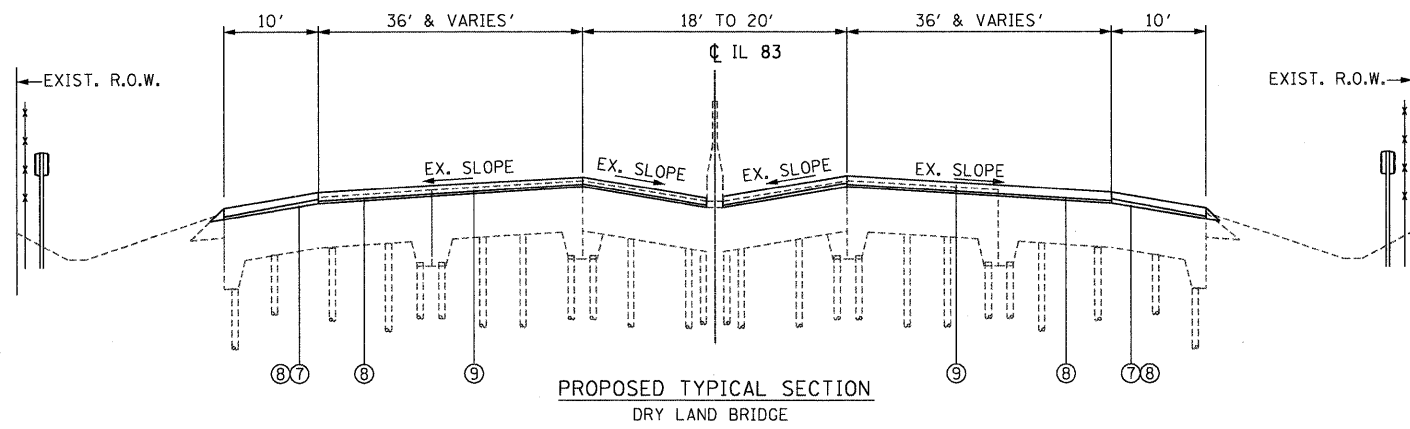


EXISTING TYPICAL SECTION
 DRY LAND BRIDGE

SOUTHBOUND
 STA. 596+06 TO STA. 608+76
 STA. 619+86 TO STA. 624+56

NORTHBOUND
 STA. 596+06 TO STA. 607+06
 STA. 619+86 TO STA. 625+56



PROPOSED TYPICAL SECTION
 DRY LAND BRIDGE

SOUTHBOUND
 STA. 596+06 TO STA. 608+77
 STA. 619+80 TO STA. 624+56

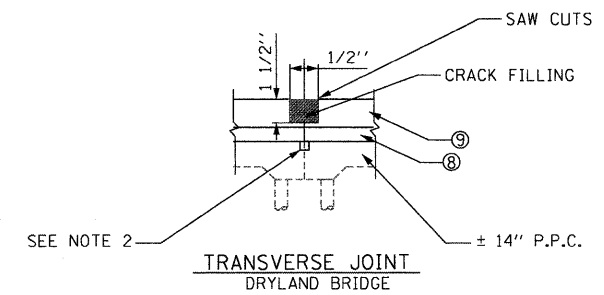
NORTHBOUND
 STA. 596+06 TO STA. 607+06
 STA. 619+86 TO STA. 625+56

LEGEND

- ① EXISTING +/-4" HMA (1 3/4" SURFACE, 2 1/4" BINDER CSE)
- ② EXISTING +/-8" P.C.C. BASE
- ③ EXISTING B-6.24 CURB AND GUTTER
- ④ EXISTING BITUMINOUS SHOULDER +/-8"
- ⑤ EXISTING +/- 8" AGGREGATE SHOULDER, TYPE B
- ⑥ HMA SURFACE REMOVAL - 2 3/4"
- ⑦ HOT-MIX ASPHALT SURFACE COURSE, MIX "D", N70 (IL-9.5MM) -1 1/2"
- ⑧ POLYMERIZED LEVELING BINDER (MACHINE METHOD), IL-4.75, N50 -3/4" (SEE NOTE 2)
- ⑨ POLYMERIZED HOT-MIX ASPHALT SURFACE COURSE, STONE MATRIX ASPHALT, N80 -2" (SEE NOTE 2)
- ⑩ HMA SURFACE REMOVAL - 2 1/4"
- ⑪ HMA SURFACE REMOVAL - 2" (SEE NOTE 1)

NOTES

1. THE CONTRACTOR SHALL CONTACT SARAH WILSON, DISTRICT ONE BRIDGE MAINTENANCE ENGINEER, AT (847) 705-4181, IMMEDIATELY AFTER THE REMOVAL OF THE EXISTING HMA SURFACE SO THE EXISTING BRIDGE DECK CAN BE EVALUATED.
2. THE CONTRACTOR SHALL RECORD THE LOCATIONS OF THE TRANSVERSE JOINTS PRIOR TO INSTALLING THE LEVELING BINDER AND SURFACE COURSE. THE CONTRACTOR SHALL SAWCUT AND CRACK FILL OVER THE EXISTING JOINTS AFTER PLACEMENT OF THE SURFACE COURSE. SEE TRANSVERSE JOINT DETAIL BELOW.



FILE NAME = P:\2009\ME\0906_Ver-Yer-PR\1\CAD\MOB_IL635\Sh1a\04-DIB0121-sh1-IL83S-TYP.dgn
 PLOT SCALE = 1/4" = 1'-0"
 PLOT DATE = 2/23/2010 10:58:11 AM
 MILLENIA Professional Services



200 22ND Street, Suite 216, Lombard, IL 60148
 630.705.9110 voice, 630.839.2566 fax
 www.mps-il.com

MILLENNIA PROFESSIONAL SERVICES

DESIGNED - CJD	REVISED -
DRAWN - CJD	REVISED -
CHECKED - RPD	REVISED -
DATE - 2/23/2010	REVISED -

**STATE OF ILLINOIS
 DEPARTMENT OF TRANSPORTATION**

**ILLINOIS ROUTE 83 (SOUTH)
 ILLINOIS RTE 56 TO WASHINGTON ST**

TYPICAL SECTIONS

SCALE:	SHEET NO.	OF	SHEETS	STA.	TO STA.
--------	-----------	----	--------	------	---------

F.A.P. RTE.	SECTION	COUNTY	TOTAL SHEETS	SHEET NO.
344	543 R-1-RS	DUPAGE	27	5
FED. ROAD DIST. NO. 1 ILLINOIS FED. AID PROJECT			CONTRACT NO. 60J21	

P:\2009\ME\0906_Ver-Yer-PR\1\CAD\MOB_IL635\Sh1a\04-DIB0121-sh1-IL83S-TYP.dgn