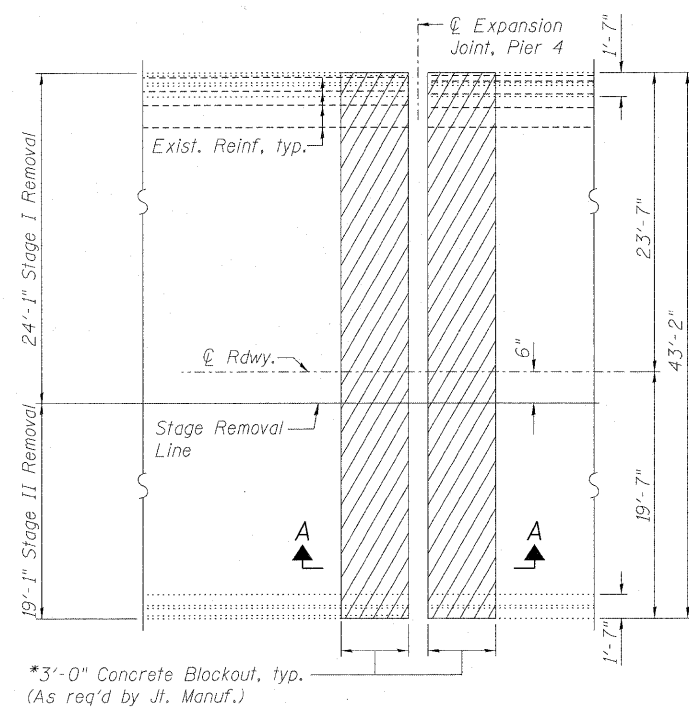


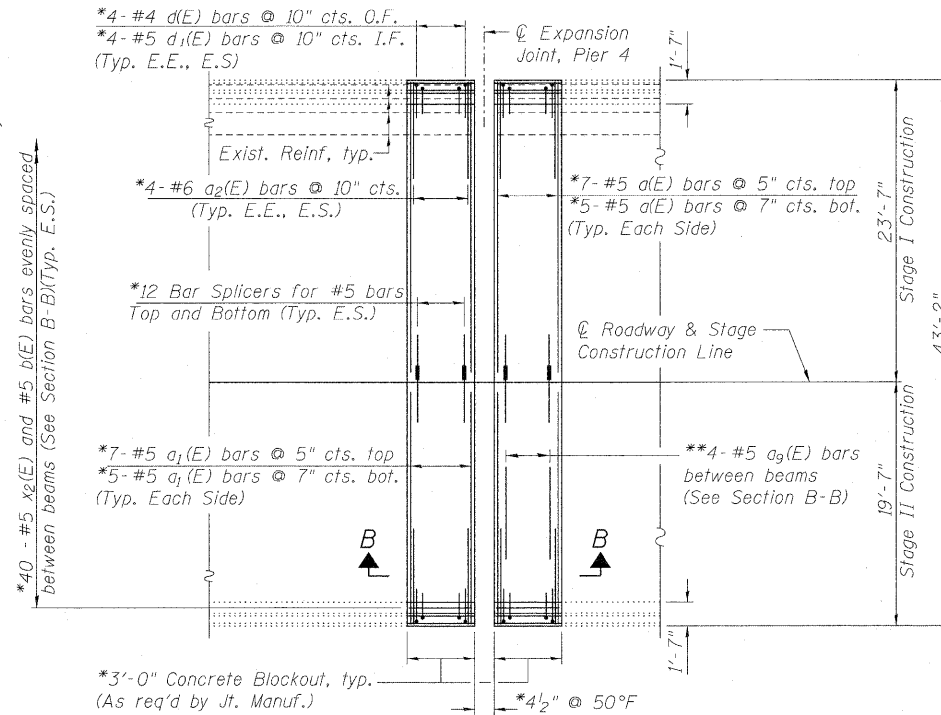
STATE OF ILLINOIS
DEPARTMENT OF TRANSPORTATION

NOTES

Hatched areas indicate concrete sections to be removed and replaced. Perimeters of concrete removal areas shall be saw cut $\frac{3}{4}$ " prior to removal of the concrete.
Existing reinforcement shall be cleaned, straightened (if required) and incorporated into the new construction. Cost included with Concrete Removal.
Drilling and epoxy grouting of reinforcement bars shall be in accordance with Article 584 of the Standard Specifications.
Removal of the existing joint system is included with Concrete Removal.
Modular expansion joints shall be assembled in their final relative position with the ends in place for shop inspection and acceptance.

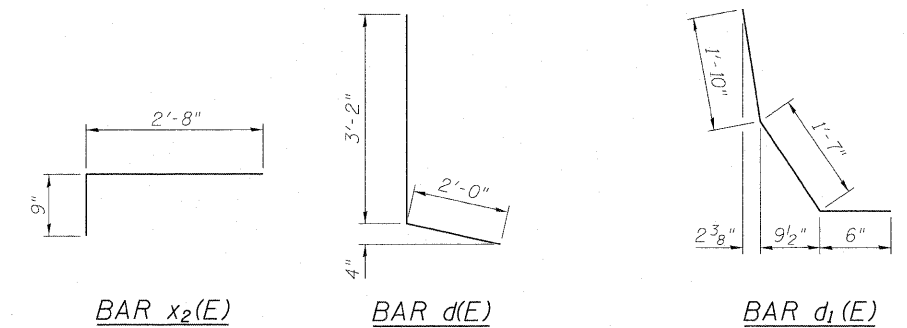


PARTIAL PLAN SHOWING CONCRETE
REMOVAL AT PIER 4

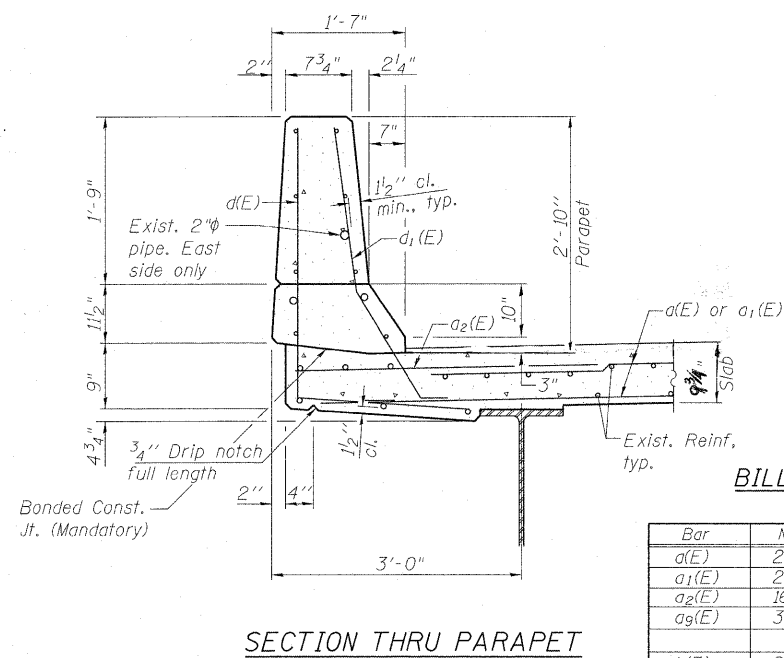


PARTIAL PLAN SHOWING CONCRETE
REPLACEMENT AT PIER 4

* Length of blockout, width of joint and number of reinforcement bars needed may vary as required by Joint Manufacturer.
** Bars to be placed so as to miss joint's support boxes. Cut to fit at Stage Construction Line



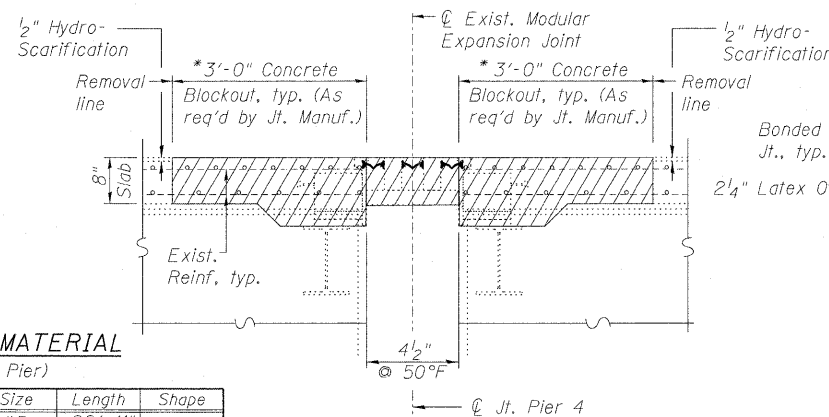
DETAIL A



SECTION THRU PARAPET

BILL OF MATERIAL
(One Pier)

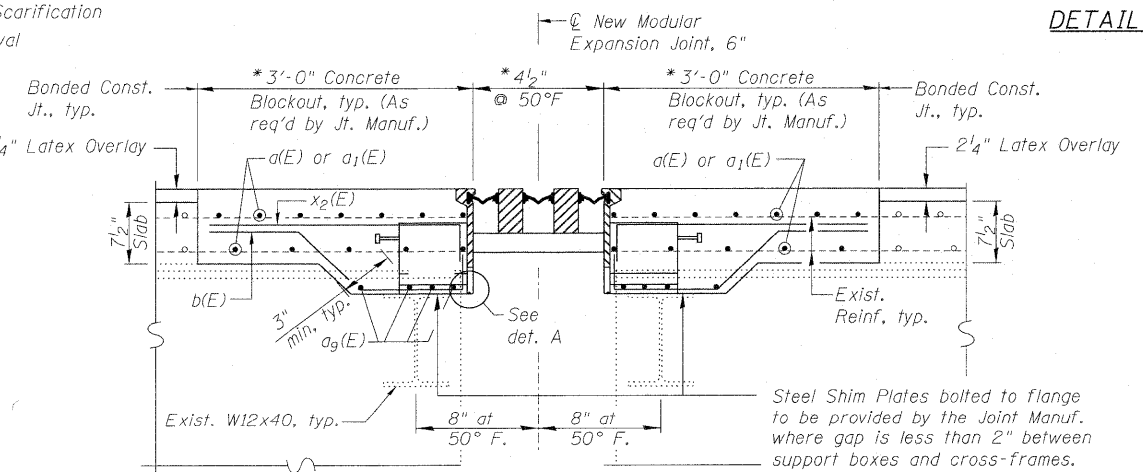
Bar	No.	Size	Length	Shape
a(E)	24	#5	22'-11"	—
a1(E)	24	#5	18'-11"	—
a2(E)	16	#6	6'-0"	—
a9(E)	32	#5	8'-10"	—
b(E)	80	#5	3'-8"	—
d(E)	16	#4	5'-2"	—
d1(E)	16	#5	3'-11"	—
x2(E)	80	#5	3'-5"	—
Concrete Removal		Cu. Yd.	9.1	
Concrete Superstructure		Cu. Yd.	10.4	
Modular Expansion Joint, 6"		Foot	42	
Reinforcement Bars, Epoxy Coated		Pounds	2200	



SECTION A-A

LEGEND

E.E. = Each End
E.S. = Each Side
I.F. = Inside Face
O.F. = Outside Face



SECTION B-B

(Cut or bend reinforcement bars as req'd to miss support boxes by 1/2")

JOINT DETAILS, PIER 4 (1 of 2)
STRUCTURE NO. 016-2407

<p>LIN ENGINEERING, LTD. Consulting Engineers Chatham, Illinois</p>	<p>SHEET NO. 14 27 SHEETS</p>	F.A.P. RTE.	SECTION	COUNTY	TOTAL SHEETS	SHEET NO.
		330	462 X-B-I	COOK	54	34
<p>CONTRACT NO. 60J37</p>						ILLINOIS FED. AID PROJECT