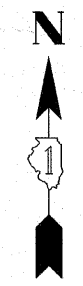
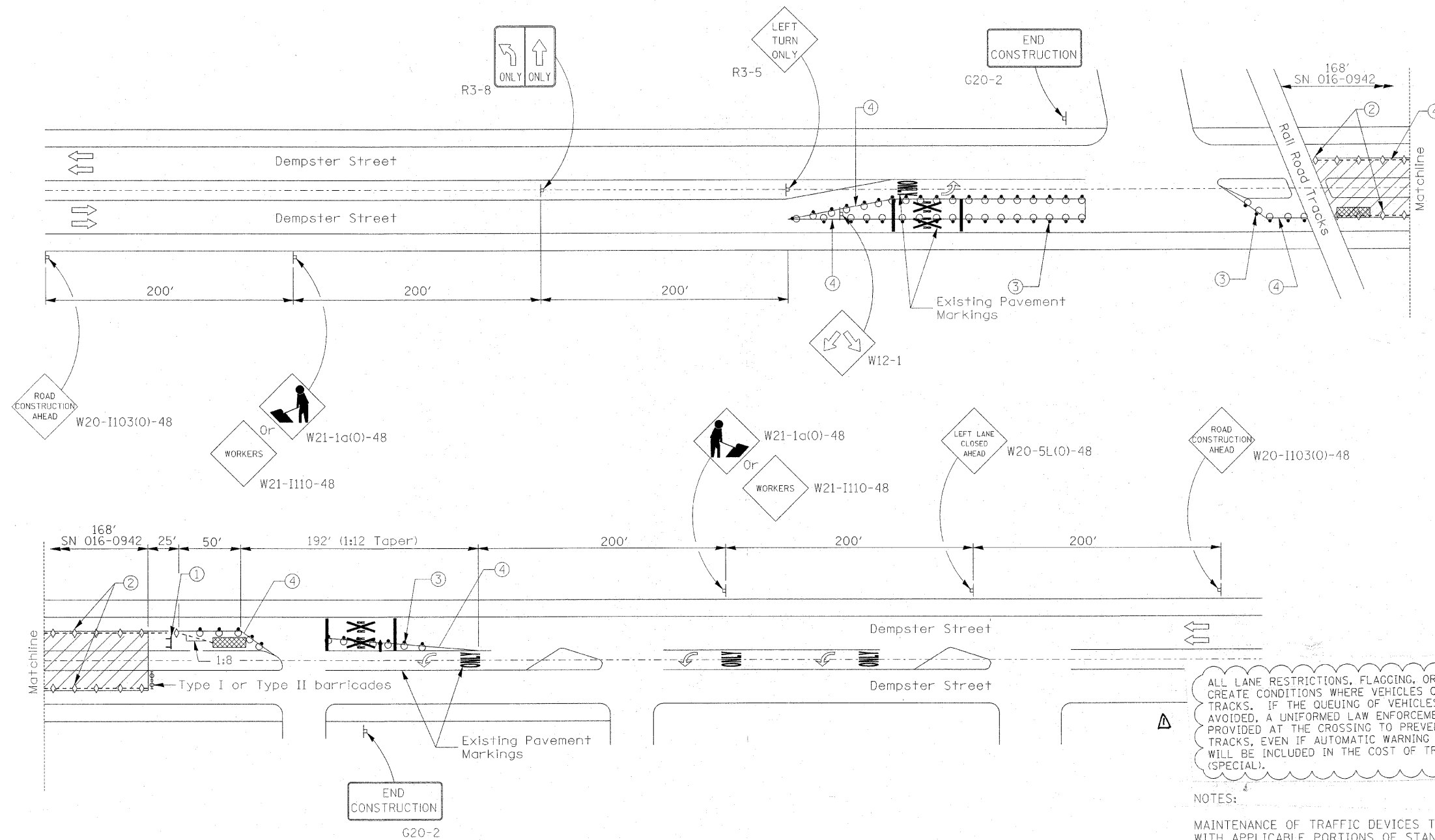


STATE OF ILLINOIS
DEPARTMENT OF TRANSPORTATION



ALL LANE RESTRICTIONS, FLAGGING, OR OTHER OPERATIONS SHALL NOT CREATE CONDITIONS WHERE VEHICLES CAN BE QUEUED ACROSS THE RAILROAD TRACKS. IF THE QUEUING OF VEHICLES ACROSS THE TRACKS CANNOT BE AVOIDED, A UNIFORMED LAW ENFORCEMENT OFFICER OR FLAGGER SHALL BE PROVIDED AT THE CROSSING TO PREVENT VEHICLES FROM STOPPING ON THE TRACKS, EVEN IF AUTOMATIC WARNING DEVICES ARE IN PLACE. THIS WORK WILL BE INCLUDED IN THE COST OF TRAFFIC CONTROL AND PROTECTION, (SPECIAL).

NOTES:
MAINTENANCE OF TRAFFIC DEVICES TO BE INSTALLED IN ACCORDANCE WITH APPLICABLE PORTIONS OF STANDARDS 701321 AND 701606 AND DISTRICT ONE STANDARDS TC-11 AND TC-13. ADDITIONAL SIGNAGE MAY BE REQUIRED BY THE RESIDENT ENGINEER. THIS WORK AND SIGNAGE IS INCLUDED IN THE PAYITEM FOR TRAFFIC CONTROL AND PROTECTION, (SPECIAL).
EXISTING, CONFLICTING PAVEMENT MARKINGS SHALL BE REMOVED. THIS WORK SHALL BE PAID FOR AS PAVEMENT MARKING REMOVAL.
REMOVAL OF THE TEMPORARY PAVEMENT MARKINGS SHALL BE PAID FOR UNDER THE PAY ITEM WORK ZONE PAVEMENT MARKING REMOVAL.
THE EXISTING PAVEMENT MARKINGS THAT HAVE BEEN REMOVED SHALL BE REPLACED IN-KIND. POLYUREA PAVEMENT MARKING, TYPE I WILL BE PLACED ON CONCRETE SURFACES. THERMOPLASTIC PAVEMENT MARKINGS WILL BE PLACED ON HMA SURFACES.

- SYMBOLS
- Work area
 - Sign
 - Type III barricade
 - Impact attenuator
 - Arrow board
 - Drum with steady burning light
 - Temporary concrete barrier
 - Crystal, bidirectional barrier wall/guardrail marker
 - Barricade or drum with flashing light
 - ① Type III barricade to be placed when no work is being performed.
 - ② Barrier wall/guardrail markers at 25' cts. See Standards 704001 & 635011.
 - ③ Drums at 6' centers
 - ④ Temporary pavement marking, 4" wide solid white

FILE NAME = D162J58-shft-staging.dgn	USER NAME = IDOT (eng)	DESIGNED - A. Seiber	REVISED -	STATE OF ILLINOIS DEPARTMENT OF TRANSPORTATION	STAGE I CONSTRUCTION-MAINTENANCE OF TRAFFIC F.A.P. 377/L 58 (DEMPSTER ST) AT NORTH BRANCH CHICAGO RIVER		F.A.P. RTE. 377	SECTION 2009-1171	COUNTY COOK	TOTAL SHEETS 15	SHEET NO. 3	
PLOT SCALE =	CHECKED - J. Hamelka	DRAWN - A. Seiber	REVISED -		SCALE:	SHEET NO. 1 OF 2 SHEETS	STA. 149+88.00 TO STA. 150+64.25	CONTRACT NO. 60J50				
PLOT DATE = January 29, 2010	DATE - JANUARY, 2010	REVISOR -	REVISOR -		ILLINOIS FED. AID PROJECT							
Rev. 4-1-10												
ILLINOIS FED. AID PROJECT												