

STATE OF ILLINOIS  
DEPARTMENT OF TRANSPORTATION

SUMMARY OF QUANTITIES

INDEX OF SHEETS

- 1 Title Sheet
- 2 Index of Sheets, State Standards, General
- 3 Notes and Summary of Quantities
- 4 Maintenance of Traffic
- 5-13 Structure Plans S1-S9
- 14-15 District One Details
- Highway Standards

INDEX OF HIGHWAY STANDARDS

Standard No.	Description
000001	Standard Symbols, Abbreviations And Patterns
001001	Areas Of Reinforcement Rebars
420001	Pavement Joints
515001	Name Plate For Bridge
630001	Steel Plate Beam Guardrail
701301	Lane Closure, 2L, 2W, Short Time Operations
701306	Lane Closure, 2L, 2W, Slow Moving Operations, Day Only
701321	Lane Closure, 2L, 2W, Bridge Repair with Barrier
701501	Urban Lane Closure, 2L, 2W, Undivided
701502	Urban Lane Closure, 2L, 2W, Bidirectional Left Turn
701602	Urban Lane Closure, Multilane 2W, Bidirectional Left Turn
701606	Urban Lane Closure, Multilane 2W, with Mountable Median
701901	Traffic Control Devices
704001	Temporary Concrete Barrier
780001	Typical Pavement Markings
781001	Typical Applications Raised Reflective Pavement Markers

GENERAL NOTES

- These plans have been prepared from notes received from IDOT Field Maintenance Engineers.
- 10 ft (3 m) transitions shall be used to match proposed items of work to existing items in the field, unless otherwise shown. The transitions shall be paid for at the contract unit price for the proposed item of work specified.
- Where artificial lighting is utilized in night operations, the Contractor shall exercise the utmost precautions in preventing adverse visibility to the motoring public and adjoining residential areas.
- The engineer shall be the sole judge concerning curing time for the various hot-mix asphalt lifts.
- For stabilization, all Type III barricades shall require a minimum of four sandbags per barricade.
- The Resident Engineer must contact the Traffic Control Supervisor at (847)705-4444 at least 72 hours prior to installation of the temporary control devices.
- The Resident Engineer shall contact the Area Traffic Field Engineer (Walter Czarny) at (847) 715-8419 at least two (2) weeks prior to the placement of permanent pavement markings.
- All pavement markings and raised reflectors affected by the bridge repairs shall be replaced. Nominal quantities have been included in the contract for this work.
- The Contractor will not be allowed to set up a yard or field office on State property without written permission from the Department.
- Do not scale these plans for construction purposes.
- Plan dimensions and details relative to existing conditions are subject to routine field verifications. The Contractor shall field verify existing dimensions and details affecting construction and make necessary adjustments prior to construction or before delivery of materials. Such variations shall not be cause for additional compensation. A change in scope of the work. However, the Contractor will be paid for the quantities actually furnished based upon the bid for the work.

HOT-MIX ASPHALT MIXTURE REQUIREMENTS	
MIXTURE TYPE	AIR VOIDS % Ndes
Polymerized Hot-Mix Asphalt Surface Course, Mix "F", N90 (IL 9.5mm)	4% @ 70 Gyr.

The unit weight used to calculate all HMA Surface mixture quantities is 112 Lbs./Sq. Yd./In.

- During construction operations, loose material deposits that obstruct the flow of water in draining the area shall be removed before the end of each work day. At the conclusion of construction operations, all drainage structures (new and existing) shall be free from all dirt and debris. This work will not be paid for separately but shall be considered incidental to the contract.
- All Type I and Type II barricades shall have two (2) sandbags on the bottom rail.
- The quantities for Hot-Mix Asphalt Surface Removal (Deck); Hot-Mix Asphalt Surface Removal, 1/2"; and Polymerized Hot-Mix Asphalt Surface Course, Mix "F", N90 have been prepared assuming 1/2 inch thick hot-mix asphalt overlays. Removal and replacement of the entire thickness of existing overlay is required.
- All raised reflective pavement markers (bridge) shall be low profile.
- Special attention is called to Article 107.12 regarding railroad flaggers. The name and telephone number of the railroad engineer is
- Before beginning any work, the Contractor shall retain and record for future reference, all existing pavement marking lines, symbols and letters (and raised reflective markers) in order that these locations can be re-established for striping. Exact locations of all pavement markings and raised reflective pavement markers shall be as directed by the Engineer.

18. The existing conduit attached to the north parapet that contains electric cable for the westbound IL. Rte. 58 far-out detector loops and interconnect cable going to Ferris Avenue shall be protected and supported during work on the parapet wall and for any sections of the parapet wall that will need to be removed. If the conduit is damaged during the bridge work, the conduit will need to be replaced on the bridge and new electric cables installed. No splicing will be allowed to any electric cables that are damaged, hence the damaged electric cables will need to be replaced for the entire length of the electric cable runs. Any damage done to the conduit shall be repaired by the Contractor at the Contractor's own expense.

CODE	ITEM DESCRIPTION	UNIT	QUANTITY	CONSTR. TYPE STRUCTURE X001-2A FEDERAL 80% STATE 20%
40603595	Polymerized Hot-Mix Asphalt Surface Course, Mix "F", N90	TON	42	42
42001300	Protective Coat	Sq. Yd.	790	790
44000155	Hot-Mix Asphalt Surface Removal, 1 1/2"	Sq. Yd.	500	500
50102400	Concrete Removal	Cu. Yd.	27	27
50300255	Concrete Superstructure	Cu. Yd.	27	27
50300260	Bridge Deck Grooving	Sq. Yd.	411	411
50500715	Jack and Remove Existing Bearings	Each	16	16
50800205	Reinforcement Bars, Epoxy Coated	Pound	8497	8497
50800615	Bar Splicers	Each	44	44
52000110	Preformed Joint Strip Sedi	Foot	196	196
52100115	Elastomeric Bearing Assembly, TYPE I (Special)	Each	16	16
52100520	ANCHOR Bolts, 1"	EACH	32	32
67000400	Engineer's Field Office, Type A	CAL MO	4	4
67100100	Mobilization	L SUM	1	1
70101800	Traffic Control and Protection, (Special)	L SUM	1	1
70301000	Work Zone Pavement Marking Removal	SQ. FT	760	760
70400100	Temporary Concrete Barrier	FOOT	380	380
70400200	Relocate Temporary Concrete Barrier	FOOT	380	380
78000200	Thermoplastic Pavement Marking-Line 4	FOOT	310	310
78008210	Polyurea Pavement Marking, Type I-Line 4	FOOT	40	40
78100100	Raised Reflective Pavement Marker	Each	25	25
78100105	Raised Reflective Pavement Marker (Bridge)	Each	25	25
78100200	Temporary Raised Reflective Pavement Marker	Each	25	25
78300100	Pavement Marking Removal	Sq. Ft.	115	115
78300200	Raised Reflective Pavement Marker Removal	Each	25	25
X0322256	Temporary Information Signing	Sq. Ft.	50	50
X0325305	Structural Repair of Concrete (Depth Equal to or Less Than 5 Inches)	Sq. Ft.	28	28
X0325775	Wet Reflective Temporary Tape, Type III, 4 Insk	Foot	2300	2300
X0326315	Bridge Deck Latex Concrete Overlay, 3 INCHES	Sq. Yd.	396	396
X0326766	Clean & Reseal Relief Joint	Foot	110	110
Z0001000	Approach Slab Repair, (Partial Depth)	Sq. Yd.	5	5
Z0001009	Bridge Deck Hydro-Scarification 3"	Sq. Yd.	444	444
Z0030000	Impact Attenuators, Temporary (Non-Redirection), Test Level 3	Each	2	2
Z0050000	Impact Attenuators, Relocate (Non-Redirection), Test Level 3	Each	2	2
Z0040000	Railroad Protective Liability Insurance	L Sum	1	1
40600100	Bituminous Materials (Prime Coat)	Gallon	50	50
X0325737	Temporary Traffic Signal Timing	Each	2	2
B5000300	Maintenance of Existing Traffic Signal Installation	L Sum	1	1

DATE	USER NAME	DESIGNED	REVISED
		DRAWN	REVISED
		CHECKED	REVISED
		DATE	REVISED

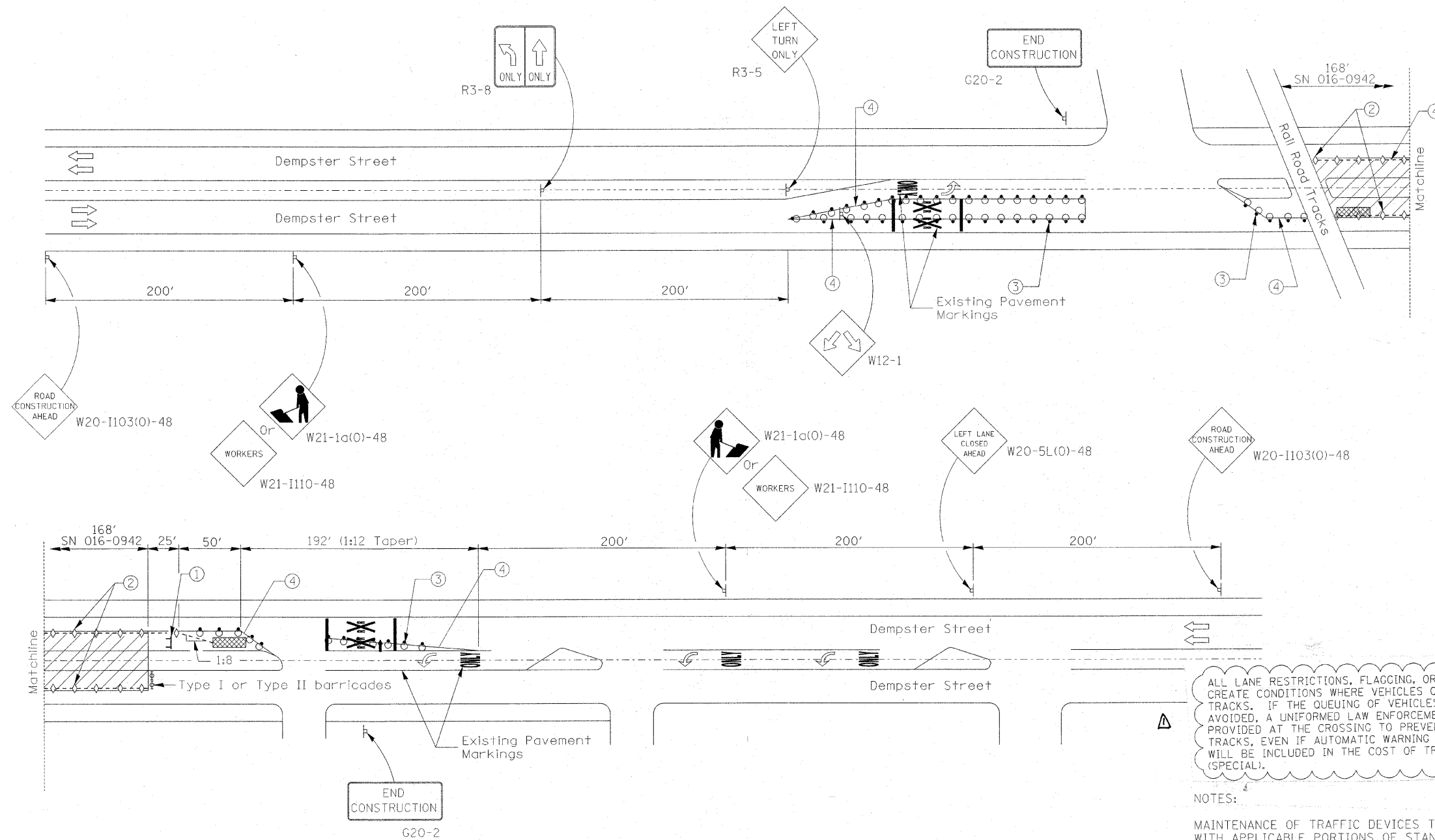
STATE OF ILLINOIS  
DEPARTMENT OF TRANSPORTATION

GENERAL NOTES, INDEX OF SHEETS  
F.A.P. 377/L 58 (DEMPSTER ST) AT NORTH BRANCH CHICAGO RIVER  
SCALE: N/A SHEET NO. 1 OF 1 SHEETS STA. 149+88.00 TO STA. 150+64.25

Rev. 4-1-10

COUNTY	TOTAL SHEETS	SHEET NO.
COOK	15	2
CONTRACT NO. 6CJ50		
PROJECT		

STATE OF ILLINOIS  
DEPARTMENT OF TRANSPORTATION



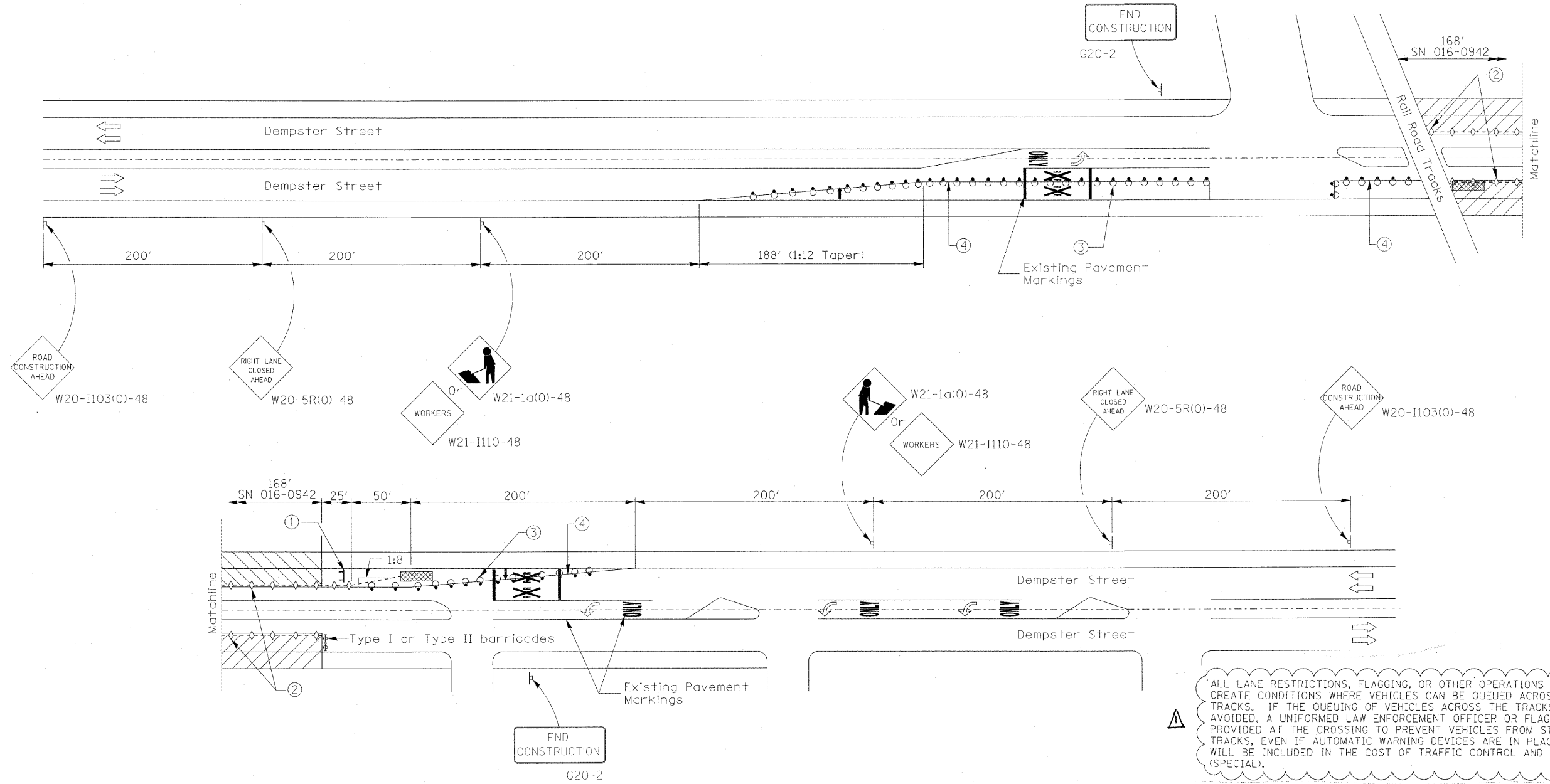
ALL LANE RESTRICTIONS, FLAGGING, OR OTHER OPERATIONS SHALL NOT CREATE CONDITIONS WHERE VEHICLES CAN BE QUEUED ACROSS THE RAILROAD TRACKS. IF THE QUEUING OF VEHICLES ACROSS THE TRACKS CANNOT BE AVOIDED, A UNIFORMED LAW ENFORCEMENT OFFICER OR FLAGGER SHALL BE PROVIDED AT THE CROSSING TO PREVENT VEHICLES FROM STOPPING ON THE TRACKS, EVEN IF AUTOMATIC WARNING DEVICES ARE IN PLACE. THIS WORK WILL BE INCLUDED IN THE COST OF TRAFFIC CONTROL AND PROTECTION, (SPECIAL).

NOTES:  
MAINTENANCE OF TRAFFIC DEVICES TO BE INSTALLED IN ACCORDANCE WITH APPLICABLE PORTIONS OF STANDARDS 701321 AND 701606 AND DISTRICT ONE STANDARDS TC-11 AND TC-13. ADDITIONAL SIGNAGE MAY BE REQUIRED BY THE RESIDENT ENGINEER. THIS WORK AND SIGNAGE IS INCLUDED IN THE PAYITEM FOR TRAFFIC CONTROL AND PROTECTION, (SPECIAL).  
EXISTING, CONFLICTING PAVEMENT MARKINGS SHALL BE REMOVED. THIS WORK SHALL BE PAID FOR AS PAVEMENT MARKING REMOVAL.  
REMOVAL OF THE TEMPORARY PAVEMENT MARKINGS SHALL BE PAID FOR UNDER THE PAY ITEM WORK ZONE PAVEMENT MARKING REMOVAL.  
THE EXISTING PAVEMENT MARKINGS THAT HAVE BEEN REMOVED SHALL BE REPLACED IN-KIND. POLYUREA PAVEMENT MARKING, TYPE I WILL BE PLACED ON CONCRETE SURFACES. THERMOPLASTIC PAVEMENT MARKINGS WILL BE PLACED ON HMA SURFACES.

- SYMBOLS
- Work area
  - Sign
  - Type III barricade
  - Impact attenuator
  - Arrow board
  - Drum with steady burning light
  - Temporary concrete barrier
  - Crystal, bidirectional barrier wall/guardrail marker
  - Barricade or drum with flashing light
  - ① Type III barricade to be placed when no work is being performed.
  - ② Barrier wall/guardrail markers at 25' cts. See Standards 704001 & 635011.
  - ③ Drums at 6' centers
  - ④ Temporary pavement marking, 4" wide solid white

FILE NAME = D162J58-shft-staging.dgn	USER NAME = IDOT (eng)	DESIGNED - A. Seiber	REVISED -	<b>STATE OF ILLINOIS DEPARTMENT OF TRANSPORTATION</b>	<b>STAGE I CONSTRUCTION-MAINTENANCE OF TRAFFIC F.A.P. 377/L 58 (DEMPSTER ST) AT NORTH BRANCH CHICAGO RIVER</b>		F.A.P. RTE. 377	SECTION 2009-1171	COUNTY COOK	TOTAL SHEETS 15	SHEET NO. 3	
PLOT SCALE =	CHECKED - J. Hamelka	DRAWN - A. Seiber	REVISED -		SCALE:	SHEET NO. 1 OF 2 SHEETS	STA. 149+88.00 TO STA. 150+64.25	CONTRACT NO. 60J50				
PLOT DATE = January 29, 2010	DATE - JANUARY, 2010	REVISOR -	REVISOR -		ILLINOIS FED. AID PROJECT							
Rev. 4-1-10												
ILLINOIS FED. AID PROJECT												

STATE OF ILLINOIS  
DEPARTMENT OF TRANSPORTATION



ALL LANE RESTRICTIONS, FLAGGING, OR OTHER OPERATIONS SHALL NOT CREATE CONDITIONS WHERE VEHICLES CAN BE QUEUED ACROSS THE RAILROAD TRACKS. IF THE QUEUING OF VEHICLES ACROSS THE TRACKS CANNOT BE AVOIDED, A UNIFORMED LAW ENFORCEMENT OFFICER OR FLAGGER SHALL BE PROVIDED AT THE CROSSING TO PREVENT VEHICLES FROM STOPPING ON THE TRACKS, EVEN IF AUTOMATIC WARNING DEVICES ARE IN PLACE. THIS WORK WILL BE INCLUDED IN THE COST OF TRAFFIC CONTROL AND PROTECTION, (SPECIAL).

- NOTES:
- MAINTENANCE OF TRAFFIC DEVICES TO BE INSTALLED IN ACCORDANCE WITH APPLICABLE PORTIONS OF STANDARDS 701321 AND 701606 AND DISTRICT ONE STANDARDS TC-11 AND TC-13. ADDITIONAL SIGNAGE MAY BE REQUIRED BY THE RESIDENT ENGINEER. THIS WORK AND SIGNAGE IS INCLUDED IN THE PAYITEM FOR TRAFFIC CONTROL AND PROTECTION, (SPECIAL).
  - EXISTING, CONFLICTING PAVEMENT MARKINGS SHALL BE REMOVED. THIS WORK SHALL BE PAID FOR AS PAVEMENT MARKING REMOVAL.
  - REMOVAL OF THE TEMPORARY PAVEMENT MARKINGS SHALL BE PAID FOR UNDER THE PAY ITEM WORK ZONE PAVEMENT MARKING REMOVAL.
  - THE EXISTING PAVEMENT MARKINGS THAT HAVE BEEN REMOVED SHALL BE REPLACED IN-KIND. POLYUREA PAVEMENT MARKING, TYPE I WILL BE PLACED ON CONCRETE SURFACES. THERMOPLASTIC PAVEMENT MARKINGS WILL BE PLACED ON HMA SURFACES.

- SYMBOLS
- Work area
  - Sign
  - Type III barricade
  - Impact attenuator
  - Arrow board
  - Drum with steady burning light
  - Temporary concrete barrier
  - Crystal, bidirectional barrier wall/guardrail marker
  - Barricade or drum with flashing light

- ① Type III barricade to be placed when no work is being performed.
- ② Barrier wall/guardrail markers at 25' cts. See Standards 704001 & 635011.
- ③ Drums at 6' centers
- ④ Temporary pavement marking, 4" wide solid white

FILE NAME = D160J58-sht-staging.dgn	USER NAME = IDOT (eng)	DESIGNED - A. Selber	REVISED -	<b>STATE OF ILLINOIS DEPARTMENT OF TRANSPORTATION</b>	<b>STAGE II CONSTRUCTION-MAINTENANCE OF TRAFFIC F.A.P. 377/L 58 (DEMPSTER ST) AT NORTH BRANCH CHICAGO RIVER</b>	F.A.P. RTE. 377	SECTION 2009-1171	COUNTY COOK	TOTAL SHEETS 15	SHEET NO. 4		
PLOT SCALE =	DATE - JANUARY, 2010	DRAWN - A. Selber	REVISED -			SCALE:	SHEET NO. 2 OF 2 SHEETS	STA. 149+88.00 TO STA. 150+64.25	CONTRACT NO. 60J50			
PLOT DATE = January 29, 2010	DATE - JANUARY, 2010	CHECKED - J. Hamelka	REVISED -			ILLINOIS FED. AID PROJECT						
						Rev. 4-1-10						