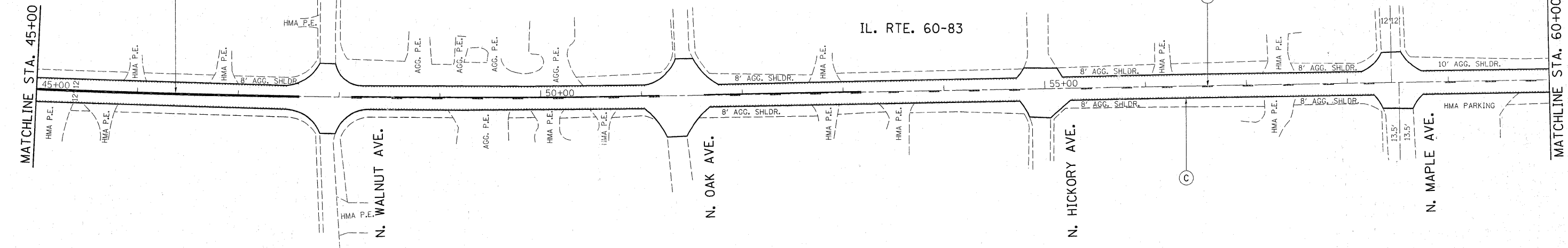
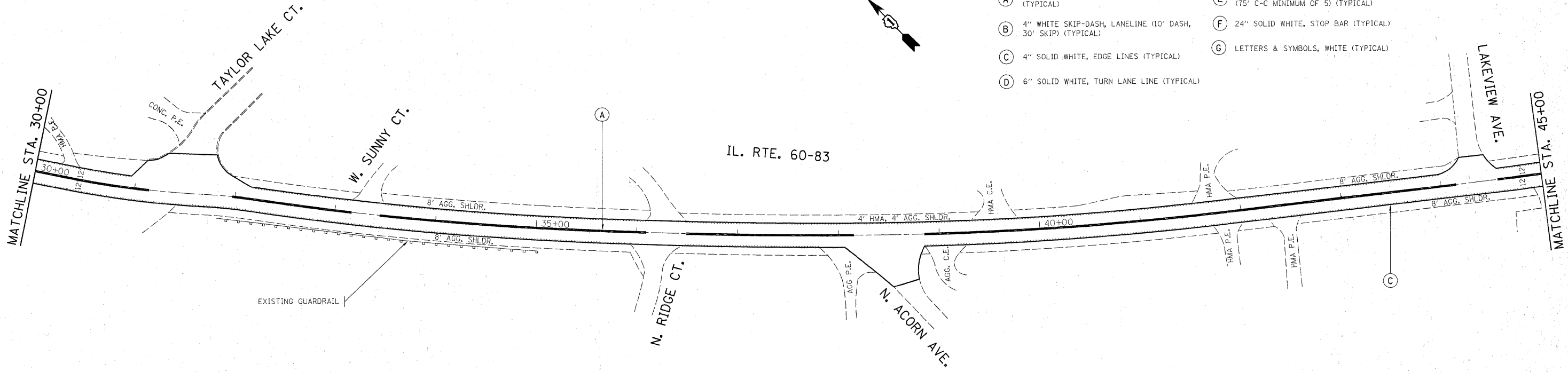
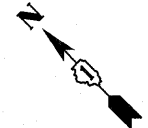


THERMOPLASTIC PAVEMENT MARKING LEGEND

- (A) 4" DOUBLE SOLID YELLOW, CENTERLINE (TYPICAL)
- (B) 4" WHITE SKIP-DASH, LANELINE (10' DASH, 30' SKIP) (TYPICAL)
- (C) 4" SOLID WHITE, EDGE LINES (TYPICAL)
- (D) 6" SOLID WHITE, TURN LANE LINE (TYPICAL)
- (E) 12" SOLID YELLOW DIAGONAL @ 45° (75' C-C MINIMUM OF 5) (TYPICAL)
- (F) 24" SOLID WHITE, STOP BAR (TYPICAL)
- (G) LETTERS & SYMBOLS, WHITE (TYPICAL)



Rev Sheet 4/7/10

FILE NAME =	USER NAME = mosse	DESIGNED -	REVISED -	STATE OF ILLINOIS DEPARTMENT OF TRANSPORTATION	ILL. RTE 60 - 83 MIDLOTHIAN RD. TO E.J. & E.R.			F.A.P. RTE. 335	SECTION 119 RS-13	COUNTY LAKE	TOTAL SHEETS 17	SHEET NO. 6
ca:\pwwork\pilot\mosse\08175322\0124310-shd-plan.dgn	PLOT SCALE = 50,0000 ' / IN.	DRAWN -	REVISED -		SCALE: 1"=50'	SHEET NO.	OF	SHEETS	STA.	TO STA.	CONTRACT NO. 60J53	
	PLOT DATE = 3/11/2010	CHECKED -	REVISED -		ILLINOIS FED. AID PROJECT							
		DATE -	REVISED -									