

INDEX OF SHEETS

1. COVER SHEET
2. INDEX OF SHEETS, STATE STANDARDS, & GENERAL NOTES
3. SUMMARY OF QUANTITIES
4. TYPICAL SECTIONS
- 5-7. ROADWAY & PAVEMENT MAKING PLANS
8. DETAILS FOR FRAMES AND LIDS ADJUSTMENT WITH MILLING
9. PAVEMENT PATCHING FOR HMA SURFACED PAVEMENT
10. CURB OR CURB AND GUTTER REMOVAL AND REPLACEMENT
11. BUTT JOINT AND HMA TAPER DETAILS
12. TRAFFIC CONTROL AND PROTECTION FOR SIDE ROADS, INTERSECTIONS, AND DRIVEWAYS
13. TYPICAL APPLICATIONS RAISED REFLECTIVE PAVEMENT MARKERS (SNOW-PLOW RESISTANT)
14. DISTRICT ONE TYPICAL PAVEMENT MARKINGS
15. TRAFFIC CONTROL AND PROTECTION AT TURN BAYS (TO REMAIN OPEN TO TRAFFIC)
16. PAVEMENT MARKING LETTERS AND SYMBOLS FOR TRAFFIC STAGING
17. ARTERIAL ROAD INFORMATION SIGN

STATE STANDARDS

- 000001-05 STANDARD SYMBOLS, ABBREVIATIONS, & PATTERNS
- 442201-03 CLASS C & D PATCHES
- 606001-04 CONCRETE CURB TYPE B AND COMBINATION  
CONCRETE CURB AND GUTTER
- 701301-03 LANE CLOSURE, 2L, 2W, SHORT TIME OPERATIONS
- 701311-03 LANE CLOSURE, 2L, 2W, MOVING OPERATIONS - DAY ONLY
- 701501-05 URBAN LANE CLOSURE, 2L, 2W, UNDIVIDED
- 701901-01 TRAFFIC CONTROL DEVICES
- 780001-02 TYPICAL PAVEMENT MARKINGS

GENERAL NOTES

BEFORE STARTING ANY EXCAVATION, THE CONTRACTOR SHALL CALL "JULIE" AT 1-800-892-0123 FOR FIELD LOCATIONS OF BURIED ELECTRIC, TELEPHONE AND GAS FACILITIES. (48 HOUR NOTIFICATION IS REQUIRED)

10' (3M) TRANSITIONS SHALL BE USED TO MATCH PROPOSED CURB & GUTTER AND MEDIAN ITEMS OF WORK TO EXISTING CURB & GUTTERS AND MEDIANS IN THE FIELD, UNLESS OTHERWISE SHOWN. THE TRANSITIONS SHALL BE PAID FOR AT THE CONTRACT UNIT PRICE FOR THE PROPOSED ITEMS OF WORK SPECIFIED.

THE CONTRACTOR SHALL COORDINATE CONSTRUCTION ACTIVITIES WITH UTILITY COMPANIES AND THE VILLAGE OF MUNDELEIN.

CONTRACTOR WILL NOT BE ALLOWED TO SET UP A YARD OR FIELD OFFICE ON STATE PROPERTY WITHOUT WRITTEN PERMISSION FROM THE DEPARTMENT.

WHEN MILLED PAVEMENT IS OPEN TO TRAFFIC, THE MAXIMUM GRADE DIFFERENTIAL BETWEEN PASSES OF THE MILLING MACHINE SHALL NOT EXCEED 1/2" (40 MM) WHERE THE SPEED LIMIT IS 45 MPH (80KM/H) OR LESS AND 1" (25 MM) WHERE THE SPEED LIMIT IS GREATER THAN 45 MPH (80 KM/H). WITH WRITTEN APPROVAL FROM THE ENGINEER, A MAXIMUM GRADE DIFFERENTIAL OF 3" (75MM) MAY BE ALLOWED IF THE EDGE OF THE MILLING IS SLOPED AT A MINIMUM 1:3 (V:H).

BUTT JOINTS WILL BE INSTALLED AT THE ENDS OF ALL RESURFACING (WHERE RESURFACING MEETS EXISTING PAVEMENT) IN ACCORDANCE WITH THE "BUTT JOINT AND HMA TAPER DETAILS" SHEET, WHICH IS INCLUDED IN THE PLANS. UNLESS OTHERWISE SPECIFIED.

THE RESIDENT ENGINEER SHALL CONTACT THE TRAFFIC CONTROL SUPERVISOR AT (847) 705-4470 A MINIMUM OF 72 HOURS PRIOR TO THE PLACEMENT OF ANY TEMPORARY TRAFFIC CONTROL DEVICES.

CONTACT AREA TRAFFIC FIELD TECHNICIAN, DEBBIE HANLON AT (847) 438-2300 AT LEAST TWO WEEKS PRIOR TO INSTALLING FINAL PAVEMENT MARKINGS.

LOCATIONS OF COMBINATION CONCRETE CURB AND GUTTER REMOVAL AND REPLACEMENT OF THE TYPE SPECIFIED ON THE PLANS, WILL BE DETERMINED IN THE FIELD BY THE ENGINEER.

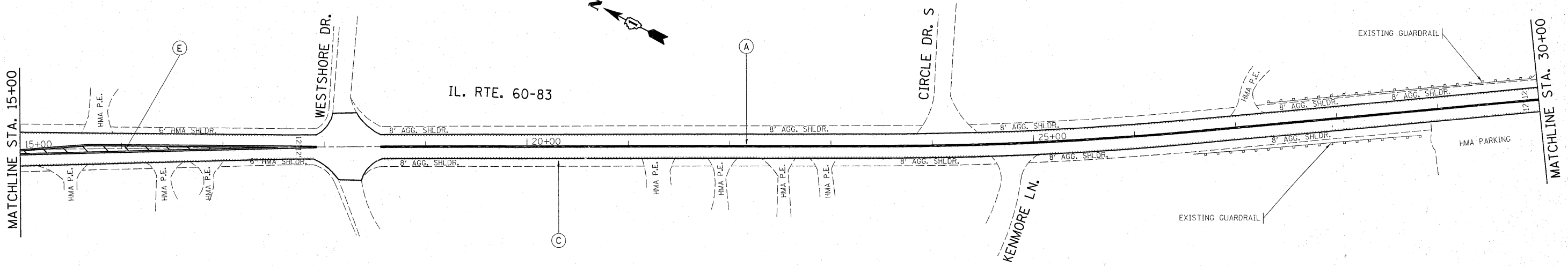
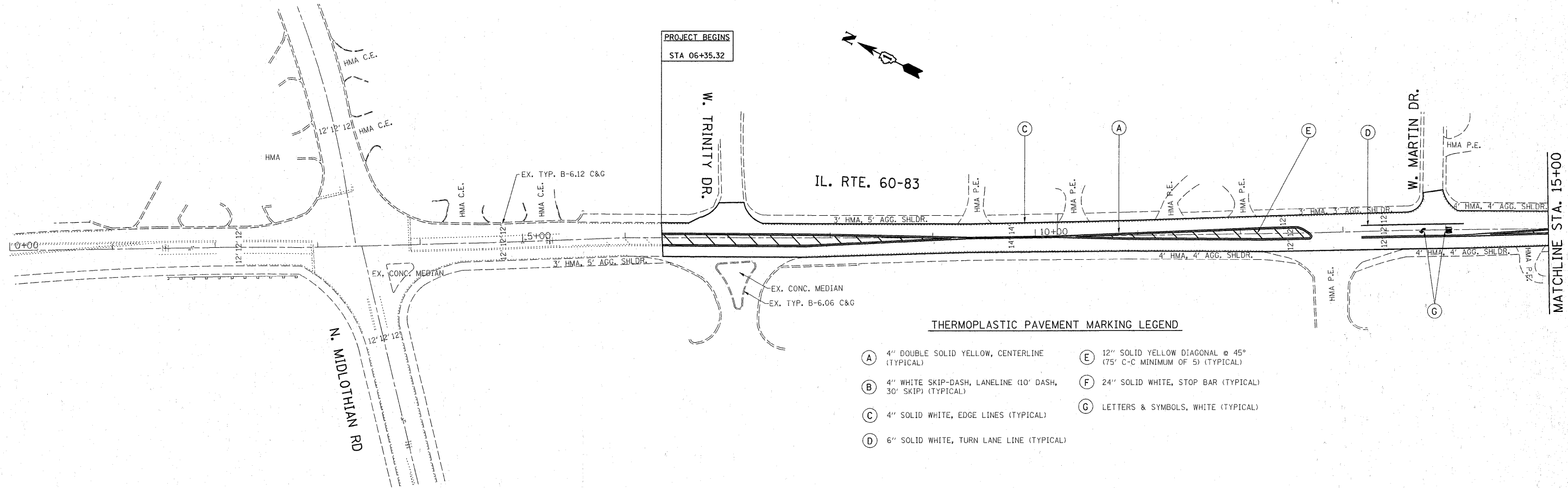
ALL PAVEMENT PATCHING LOCATIONS WILL BE DETERMINED IN THE FIELD BY THE ENGINEER.

DRAINAGE ADJUSTMENT OR RECONSTRUCTION WILL BE DETERMINED IN HE FIELD BY THE ENGINEER.

BEFORE BEGINNING ANY WORK, THE CONTRACTOR SHALL RETAIN AND RECORD FOR FUTURE REFERENCE, ALL EXISTING PAVEMENT MARKING LINES (AND RAISED REFLECTIVE MARKINGS) IN ORDER THAT THESE LOCATIONS CAN BE RE-ESTABLISHED FOR STRIPING. EXACT LOCATIONS OF ALL PAVEMENT MARKINGS SHALL BE AS DIRECTED BY THE ENGINEER.

FILE NAME =	USER NAME = mosse	DESIGNED -	REVISED -	<b>STATE OF ILLINOIS DEPARTMENT OF TRANSPORTATION</b>	SCALE:	SHEET NO. OF SHEETS	STA. TO STA.	F.A.P. RTE.	SECTION	COUNTY	TOTAL SHEETS	SHEET NO.
ci\pw_work\pwsdot\mosse\d0175322\0124300-sht-plan.dgn	DRAWN -	REVISED -	335					119 RS-13	LAKE	17	2	
PLOT SCALE = 50.0000' / IN.	CHECKED -	REVISED -	CONTRACT NO. 60J53									
PLOT DATE = 3/11/2010	DATE -	REVISED -	ILLINOIS FED. AID PROJECT									

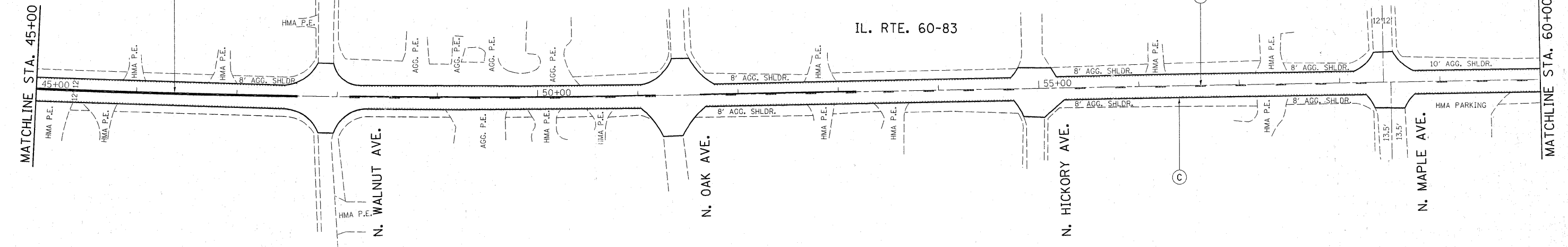
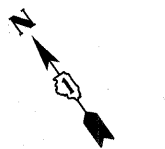
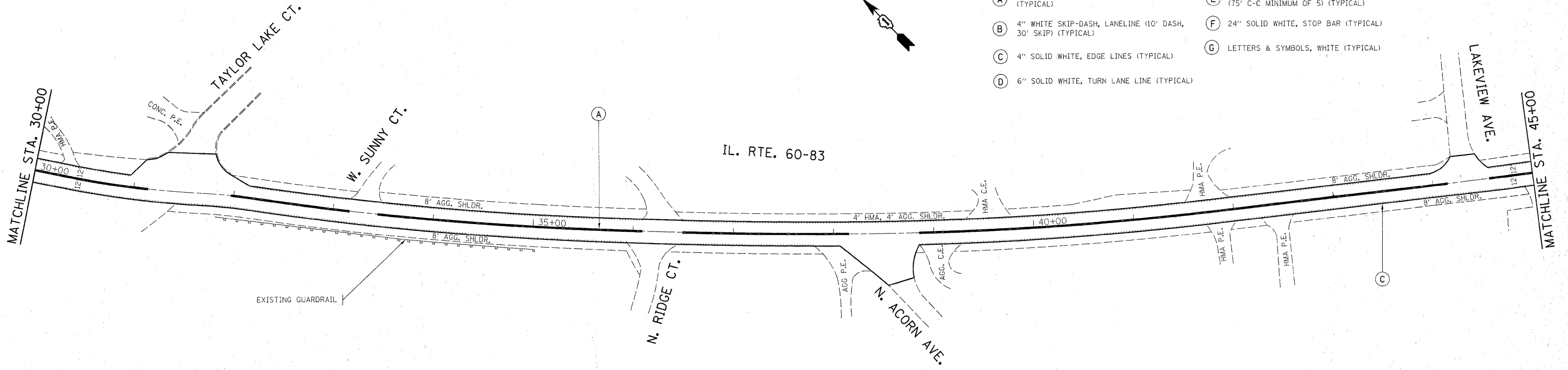
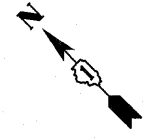
Rev. Sheet 4-7-10



FILE NAME =	USER NAME = mossse	DESIGNED -	REVISED -	<b>STATE OF ILLINOIS DEPARTMENT OF TRANSPORTATION</b>	<b>ILL. RTE 60 - 83 MIDLOTHIAN RD. TO E.J. &amp; E. R.</b>			F.A.P. RTE. 335	SECTION 119 RS-13	COUNTY LAKE	TOTAL SHEETS 17	SHEET NO. 5
c:\pw\work\pwi\dott\mossse\d0175322\0124310-shr-plan.dgn		DRAWN -	REVISED -		SCALE: 1"=50'	SHEET NO.	OF SHEETS	STA.	TO STA.	CONTRACT NO. 60J53		
		CHECKED -	REVISED -							ILLINOIS FED. AID PROJECT		
		DATE = 3/11/2010	REVISED -							Rev. Sheet 4/7/10		

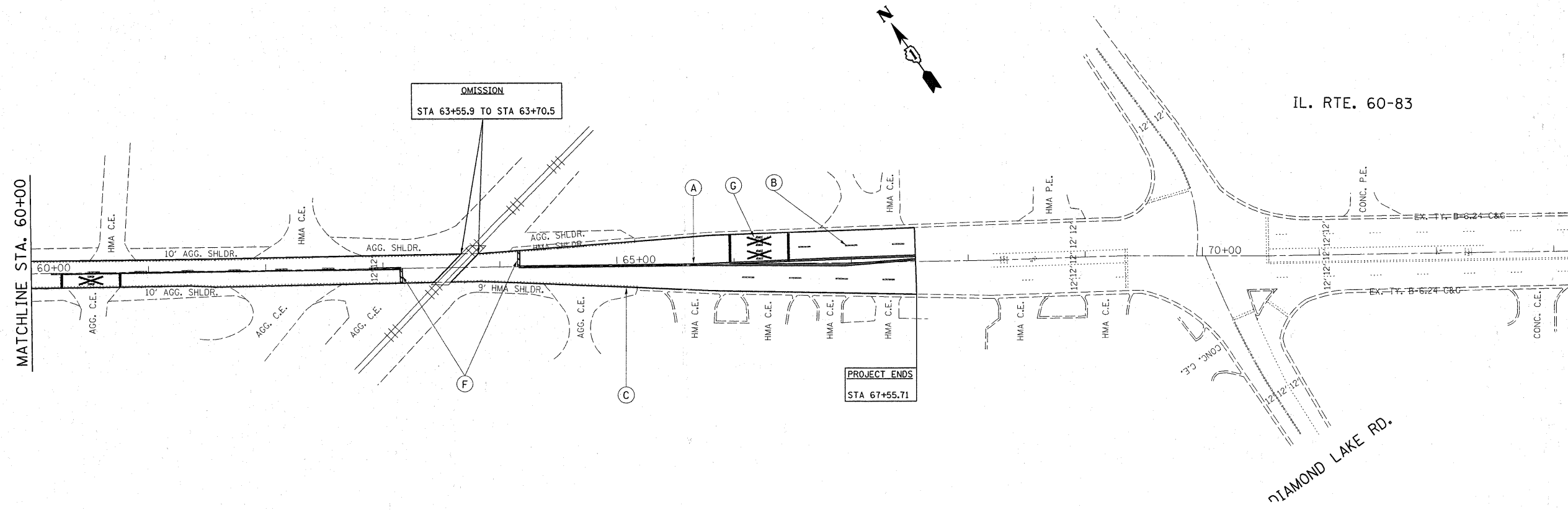
**THERMOPLASTIC PAVEMENT MARKING LEGEND**

- (A) 4" DOUBLE SOLID YELLOW, CENTERLINE (TYPICAL)
- (B) 4" WHITE SKIP-DASH, LANELINE (10' DASH, 30' SKIP) (TYPICAL)
- (C) 4" SOLID WHITE, EDGE LINES (TYPICAL)
- (D) 6" SOLID WHITE, TURN LANE LINE (TYPICAL)
- (E) 12" SOLID YELLOW DIAGONAL @ 45° (75' C-C MINIMUM OF 5) (TYPICAL)
- (F) 24" SOLID WHITE, STOP BAR (TYPICAL)
- (G) LETTERS & SYMBOLS, WHITE (TYPICAL)



*Rev Sheet 4/7/10*

FILE NAME =	USER NAME = mosse	DESIGNED -	REVISED -	<b>STATE OF ILLINOIS DEPARTMENT OF TRANSPORTATION</b>	<b>ILL. RTE 60 - 83 MIDLOTHIAN RD. TO E.J. &amp; E.R.</b>			F.A.P. RTE. 335	SECTION 119 RS-13	COUNTY LAKE	TOTAL SHEETS 17	SHEET NO. 6
ca:\pwork\p\dot\mosse\0175322\0124310-shr-plan.dgn	PLOT SCALE = 50,0000 ' / IN.	DRAWN -	REVISED -		SCALE: 1"=50'	SHEET NO.	OF	SHEETS	STA.	TO STA.	CONTRACT NO. 60J53	
	PLOT DATE = 3/11/2010	CHECKED -	REVISED -		ILLINOIS FED. AID PROJECT							
		DATE -	REVISED -									



**THERMOPLASTIC PAVEMENT MARKING LEGEND**

- (A) 4" DOUBLE SOLID YELLOW, CENTERLINE (TYPICAL)
- (B) 4" WHITE SKIP-DASH, LANELINE (10' DASH, 30' SKIP) (TYPICAL)
- (C) 4" SOLID WHITE, EDGE LINES (TYPICAL)
- (D) 6" SOLID WHITE, TURN LANE LINE (TYPICAL)
- (E) 12" SOLID YELLOW DIAGONAL @ 45° (75' C-C MINIMUM OF 5) (TYPICAL)
- (F) 24" SOLID WHITE, STOP BAR (TYPICAL)
- (G) LETTERS & SYMBOLS, WHITE (TYPICAL)

FILE NAME =  
c:\pr\work\p1dot\mossse\0175322\012431

USER NAME = mossse  
sht-plan.dgn  
PLOT SCALE = 50,0000 1/ IN.  
PLOT DATE = 3/11/2010

DESIGNED -  
DRAWN -  
CHECKED -  
DATE -

REVISED -  
REVISED -  
REVISED -  
REVISED -

**STATE OF ILLINOIS  
DEPARTMENT OF TRANSPORTATION**

**ILL. RTE 60 - 83  
MIDLOTHIAN RD. TO E.J. & E. R.**

SCALE: 1"=50' SHEET NO. OF SHEETS STA. TO STA.

F.A.P. RTE.	SECTION	COUNTY	TOTAL SHEETS	SHEET NO.
335	119 RS-13	LAKE	17	7
CONTRACT NO. 60J53				
ILLINOIS FED. AID PROJECT				

*Rev. Sheet 4/7/10*