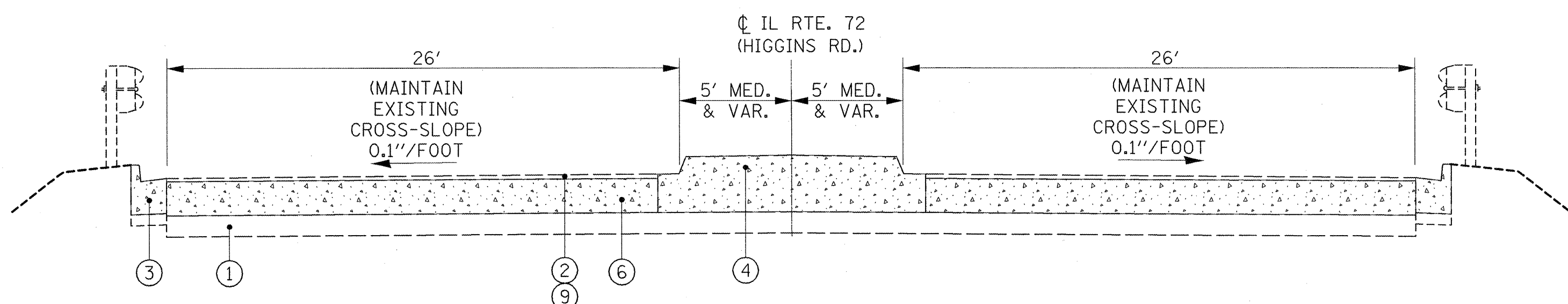


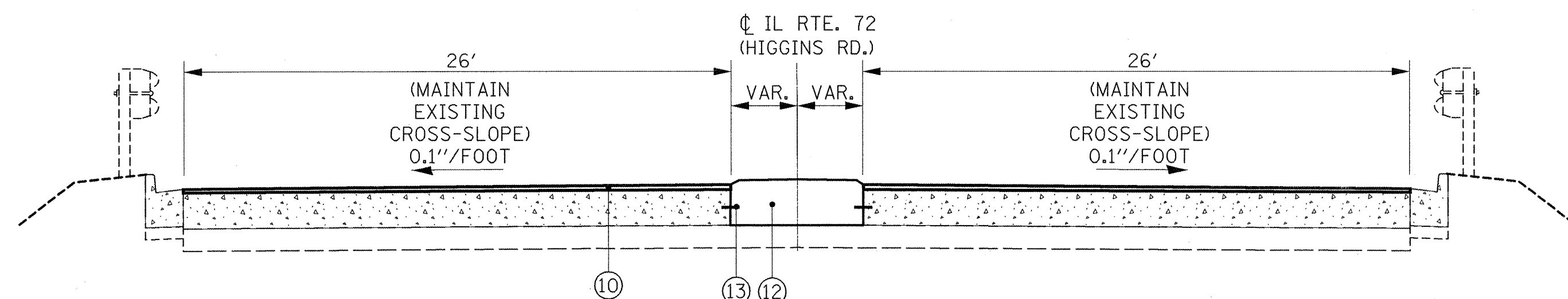
EXISTING TYPICAL SECTION

STA. 116+26 TO 116+93



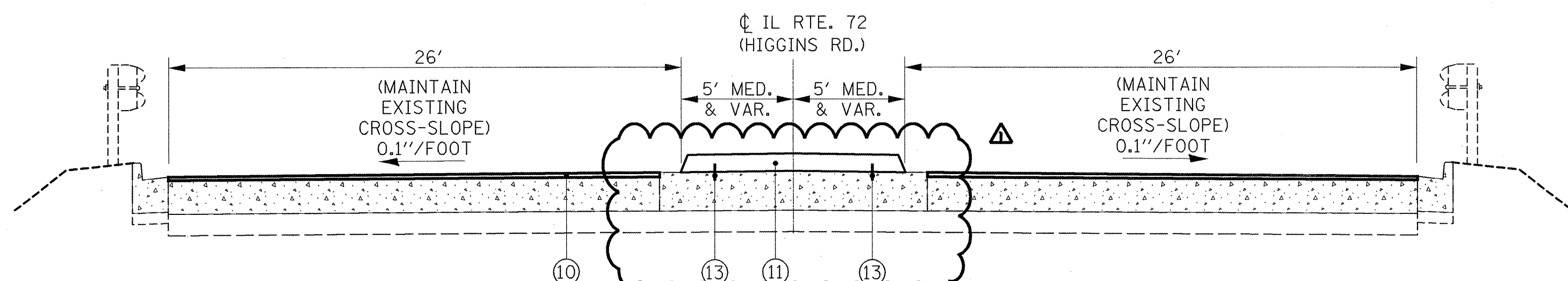
EXISTING TYPICAL SECTION

STA. 113+65 TO 114+26



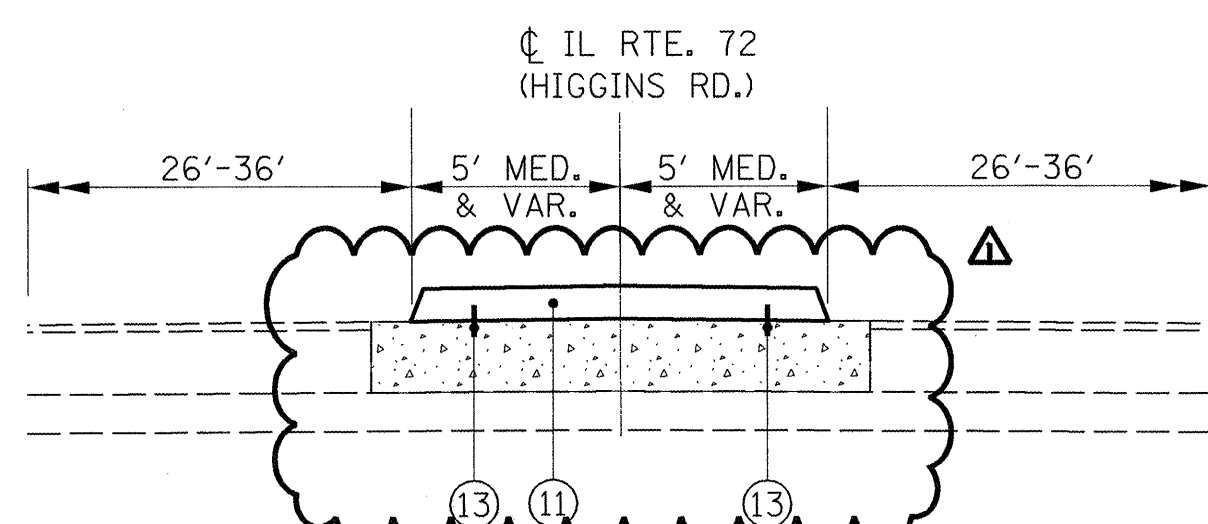
PROPOSED TYPICAL SECTION

PAVEMENT RESURFACING:
STA. 116+26 TO 116+93
MEDIAN REMOVAL AND REPLACEMENT:
STA. 116+26 TO 117+02



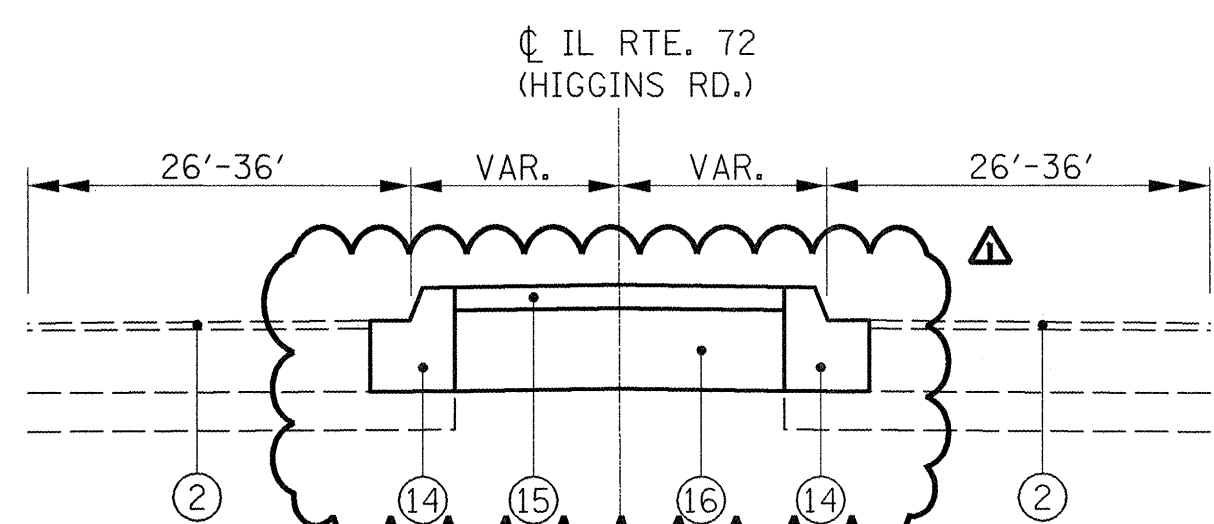
PROPOSED TYPICAL SECTION

STA. 113+68 TO 114+26



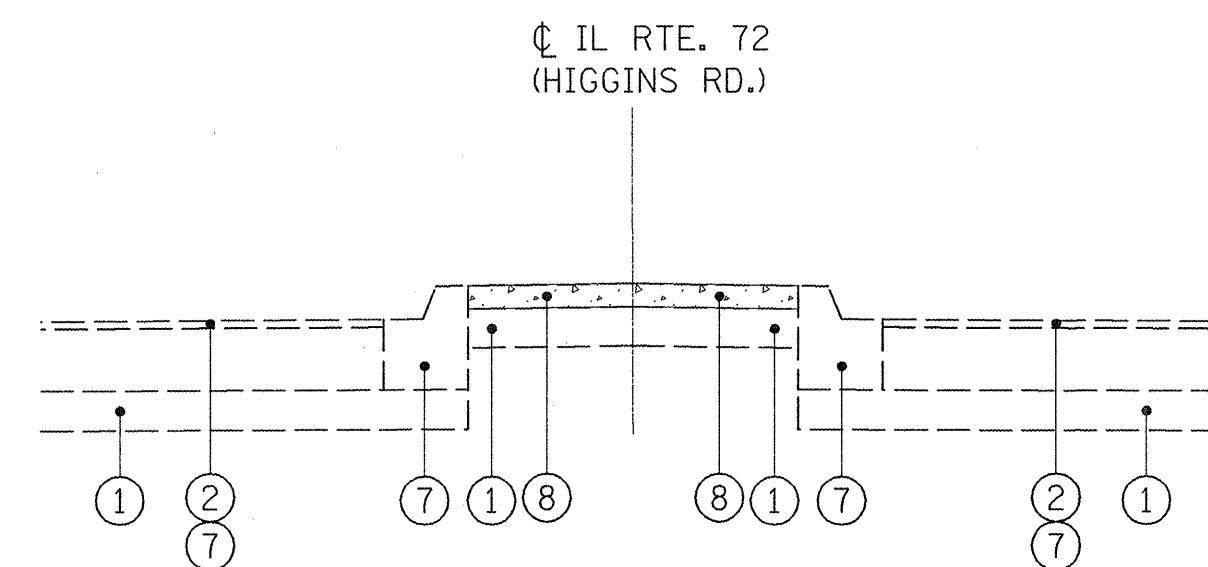
PROPOSED TYPICAL SECTION

STA. 109+19 TO 113+68



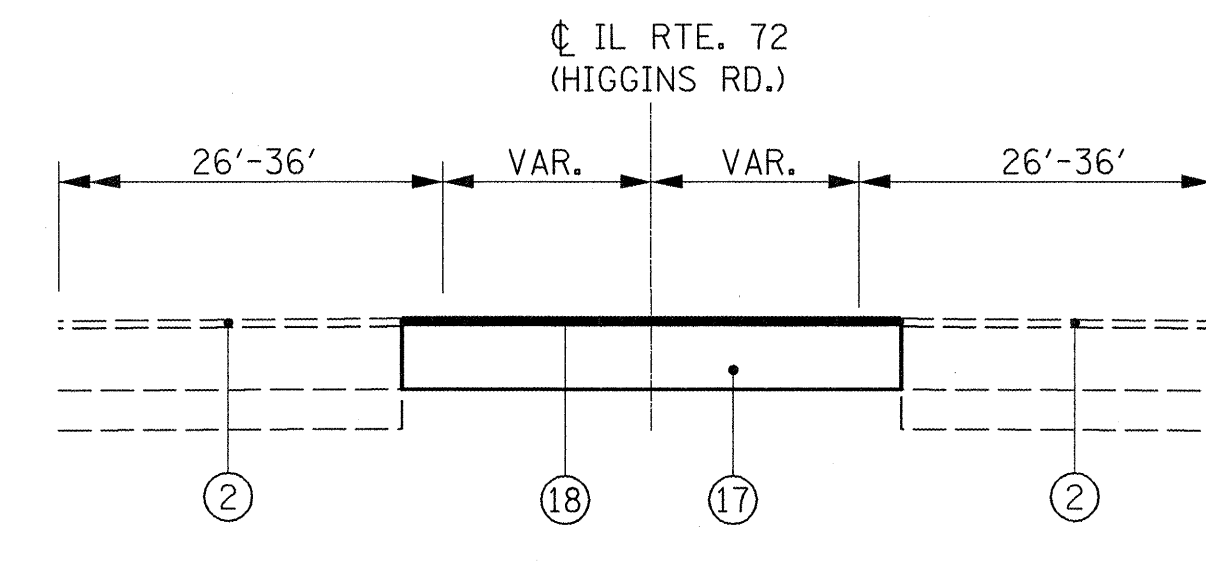
PROPOSED TYPICAL SECTION

STA. 105+13 TO 108+20



EXISTING TYPICAL SECTION

STA. 105+13 TO 108+20



STAGING TYPICAL SECTION

STA. 105+13 TO 108+20

LEGEND

- ① EXISTING AGGREGATE BASE COURSE
- ② EXISTING HOT-MIX ASPHALT OVERLAY, 1 1/2"
- ③ EXISTING COMBINATION CURB AND GUTTER, TYPE B-6.24
- ④ EXISTING CONCRETE BARRIER MEDIAN TYPE SB-9.06
- ⑤ EXISTING CONCRETE CORRUGATED MEDIAN
- ⑥ EXISTING CONCRETE APPROACH SLAB
- ⑦ EXISTING COMBINATION CONCRETE CURB AND GUTTER, TYPE B-9.06
- ⑧ EXISTING CONCRETE MEDIAN SURFACE, 4"
- ⑨ PROPOSED HOT-MIX ASPHALT SURFACE REMOVAL, 1 3/4" Δ
- ⑩ PROPOSED POLYMERIZED HOT-MIX ASPHALT SURFACE COURSE, MIX "F", N90 1 3/4" Δ
- ⑪ PROPOSED CONCRETE BARRIER MEDIAN, TYPE SB-9 (DOWELLED) Δ
- ⑫ PROPOSED CONCRETE CORRUGATED MEDIAN
- ⑬ TIE BARS, NO. 5, 12" LONG, EMBEDDED 6" INTO EXISTING PAVEMENT @ 30" O.C. (SEE SHEET 26) Δ
- ⑭ PROPOSED COMBINATION CONCRETE CURB AND GUTTER, TYPE B-9.06
- ⑮ PROPOSED CONCRETE MEDIAN SURFACE, 4"
- ⑯ PROPOSED SUB-BASE GRANULAR MATERIAL TYPE B Δ
- ⑰ TEMPORARY PAVEMENT (HMA BINDER IL-19 mm) 10" Δ
- ⑱ HMA SURFACE COURSE, MIX "D", N50 (IL 9.5 mm), 1 1/2" (PAID FOR AS TEMPORARY PAVEMENT)

HOT-MIX ASPHALT MIXTURE REQUIREMENTS

	MIXTURE USES	VOIDS
MAIN ROADWAY RESURFACING	POLYMERIZED HOT-MIX ASPHALT SURFACE COURSE, MIX "F", N90 (IL-9.5mm)	4% @ 90 GYR.
TEMPORARY PAVEMENT	TEMP PAVEMENT (HMA BINDER IL-19 mm)	4% @ 50 GYR.
TEMPORARY PAVEMENT	HMA SURFACE COURSE, MIX "D", N50 (IL 9.5 mm)	4% @ 50 GYR.

NOTE:
THE UNIT WEIGHT USED TO CALCULATE ALL HOT-MIX ASPHALT SURFACE MIXTURES IS 112 LBS/SQ YD/IN.

THE "AC TYPE" FOR POLYMERIZED HMA MIXES SHALL BE "SBS/SBR PG 70-22" AND FOR NON-POLYMERIZED HMA THE "AC TYPE" SHALL BE "PG 64-22" UNLESS MODIFIED BY DISTRICT ONE SPECIAL PROVISIONS. FOR "PERCENT OF RAP" SEE DISTRICT ONE SPECIAL PROVISIONS.

3/23/2010
 K:\11225522\CAD\Sheets\1172 Typical Sections.dgn
 USER: DJW
 MODEL: Default



Excellence through Ownership

200 West Front Street
Wheaton, IL 60187

DESIGNED - MTH	REVISED Δ 2/16/2010 IDOT COMMENTS
DRAWN - DJW	REVISED
CHECKED - MAK	REVISED
DATE - 3/23/2010 9:51:12 AM	REVISED

**STATE OF ILLINOIS
DEPARTMENT OF TRANSPORTATION**

**IL-72 OVER DESPLAINES RIVER
SN 016-0665**

TYPICAL SECTIONS

SCALE: NTS SHEET NO. 4 OF 33 SHEETS STA. TO STA.

F.A.U. RTE. 1350	SECTION 1292-I	COUNTY COOK	TOTAL SHEETS 33	SHEET NO. 4
CONTRACT NO. 60J57				
FED. ROAD DIST. NO. 1 ILLINOIS FED. AID PROJECT				

Δ Rev. 4-13-10