

F.A.U. RTE.	SECTION	COUNTY	TOTAL SHEETS	SHEET NO.
2919	2009-118 RS	COOK	29	1
FED. ROAD DIST. NO. 1	ILLINOIS	CONTRACT NO. 60J68		

D-91-258-10

STATE OF ILLINOIS
DEPARTMENT OF TRANSPORTATION
DIVISION OF HIGHWAYS
PROPOSED
HIGHWAY PLANS

F.A.U. 2919: COTTAGE GROVE AVENUE
83RD STREET TO 92ND STREET
SECTION: 2009-118 RS
RESURFACING (3P)
PROJECT: - -
COOK COUNTY
C-91-258-10

FOR INDEX OF SHEETS, SEE SHEET NO. 2

IMPROVEMENT LOCATED WITHIN THE CITY CHICAGO



LOCATION OF SECTION INDICATED THUS: - -


STATE OF ILLINOIS
DEPARTMENT OF TRANSPORTATION
DIVISION OF HIGHWAYS

SUBMITTED FEBRUARY 16, 2010

Diane M. O'Keefe or
DEPUTY DIRECTOR OF HIGHWAYS, REGION ENGINEER

March 19, 2010
Scott E. Stitt, P.E.
acting ENGINEER OF DESIGN AND ENVIRONMENT

March 19, 2010
Christine M. Reed
DIRECTOR OF HIGHWAYS, CHIEF ENGINEER

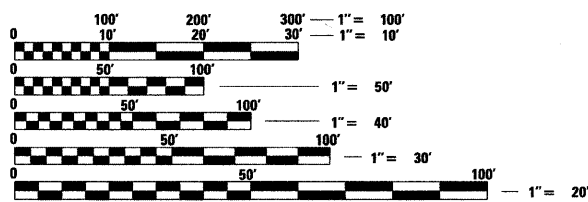
 200 22ND Street, Suite 216, Lombard, IL 60148
630.705.0110 voice, 630.839.2566 fax
www.mps-il.com

MILLENNIA PROFESSIONAL SERVICES

PRINTED BY THE AUTHORITY
OF THE STATE OF ILLINOIS

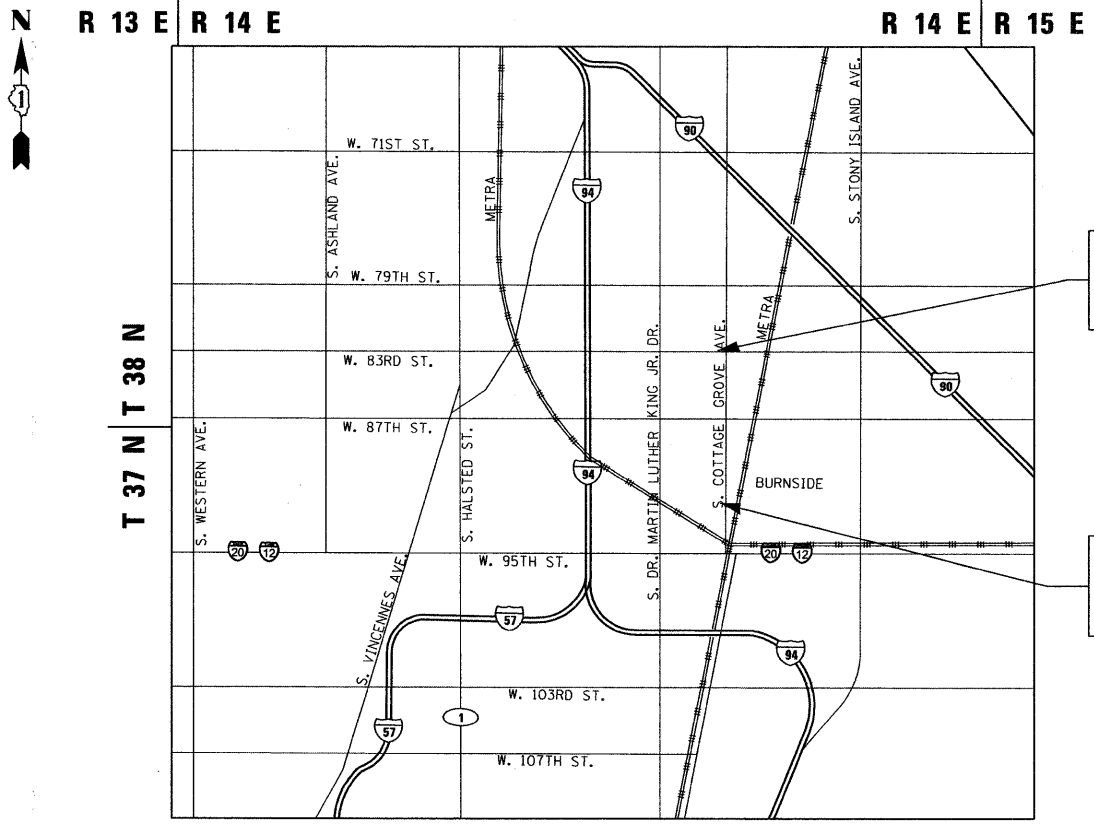
DISTRICT ONE - PLAN PREP ENGINEER: KEN ENG (847) 705-4247

TRAFFIC DATA
COTTAGE GROVE AVENUE
2007 ADT = 25,500
SPEED LIMIT = 30 MPH



FULL SIZE PLANS HAVE BEEN PREPARED USING STANDARD ENGINEERING SCALES. REDUCED SIZED PLANS WILL NOT CONFORM TO STANDARD SCALES. IN MAKING MEASUREMENTS ON REDUCED PLANS, THE ABOVE SCALES MAY BE USED.

J.U.L.I.E.
JOINT UTILITY LOCATION INFORMATION FOR EXCAVATION
1-800-892-0123 OR 811
C.U.A.N.
CHICAGO UTILITY ALERT NETWORK
1-312-744-7000



IMPROVEMENT ENDS
STA. 254 + 00.00

IMPROVEMENT BEGINS
STA. 193 + 00.00


SCALE: NTS

HYDE PARK TOWNSHIP

GROSS LENGTH OF PROJECT = 6100 FT = 1.16 MILES
NET LENGTH OF PROJECT = 6100 FT = 1.16 MILES

MILLENNIA PROFESSIONAL SERVICES
THOMAS V. NGO, P.E.
062-058379

Thomas V. Ngo
DATE: 02/15/10
SIGNATURE AND SEAL APPLIES TO DRWG.



CONTRACT NO. 60J68