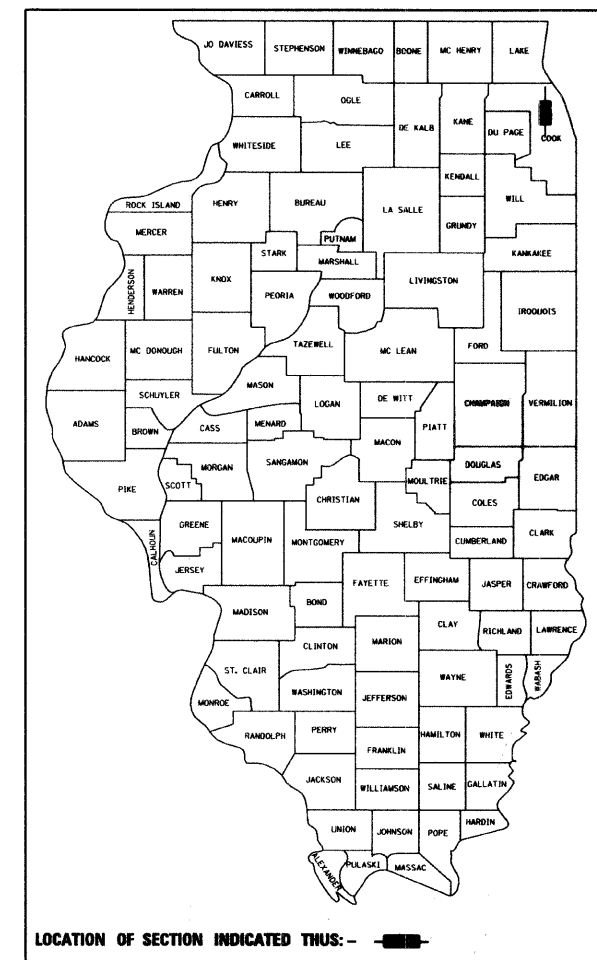


F.A.U. RTE.	SECTION	COUNTY	TOTAL SHEETS	SHEET NO.
2744	2009-120 RS	COOK	29	1
ILLINOIS			CONTRACT NO. 60J73	

★ 29-1 = 28

D-91-263-10



STATE OF ILLINOIS
DEPARTMENT OF TRANSPORTATION
DIVISION OF HIGHWAYS

**PROPOSED
HIGHWAY PLANS**

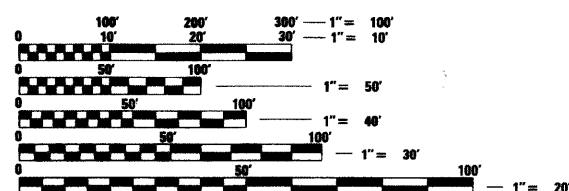
**FAU ROUTE 2744 GREEN BAY RD/GLENCOE RD.
SECTION 2009-120 RS
SCOTT AVENUE TO 16TH STREET
RESURFACING
PROJECT --
COOK COUNTY
C-91-263-10**

FOR INDEX OF SHEETS, SEE SHEET NO. 2

TRAFFIC DATA

EXISTING ADT = 10,100 TO 14,900 (2007)
SPEED LIMIT = 20 - 35 MPH

THE IMPROVEMENT IS LOCATED WITHIN
THE VILLAGES OF WINNETKA AND KENILWORTH

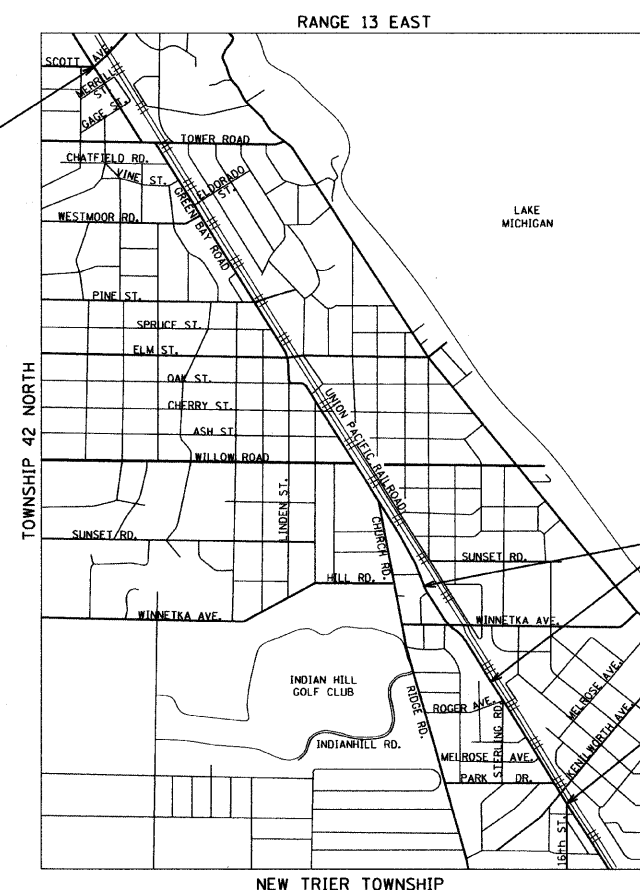


FULL SIZE PLANS HAVE BEEN PREPARED USING STANDARD ENGINEERING SCALES. REDUCED SIZED PLANS WILL NOT CONFORM TO STANDARD SCALES. IN MAKING MEASUREMENTS ON REDUCED PLANS, THE ABOVE SCALES MAY BE USED.

J.U.L.I.E.
JOINT UTILITY LOCATION INFORMATION FOR EXCAVATION
1-800-892-0123
OR 811

PROJECT ENGINEER: PETER JOHNSTON (GRAEF) 773-399-0112
PROJECT MANAGER: KEN ENG (IDOT) 847-705-4247

CONTRACT NO. 60J73



END PROJECT
STA. 154+35

OMIT RESURFACING
IMPROVEMENTS FROM
STA. 35+16 TO STA. 40+98

BEGIN PROJECT
STA. 3+75

Peter M. Johnston
1-28-10
PETER M. JOHNSTON
062-047647
REGISTERED
PROFESSIONAL
ENGINEER
OF
ILLINOIS
Exp. 11-30-11

GROSS LENGTH = 15,060 FT. = 2.85 MILES
NET LENGTH = 14,478 FT. = 2.74 MILES

GRAEF 8501 W. Higgins Road; Suite 280
Chicago, Illinois 60631
(773) 399-0112

STATE OF ILLINOIS
DEPARTMENT OF TRANSPORTATION
DIVISION OF HIGHWAYS
SUBMITTED FEBRUARY 3, 2010
Diana M. O'Keefe
DEPUTY DIRECTOR OF HIGHWAYS, REGION ENGINEER
March 19, 2010
Scott E. Steil, P.E.
ENGINEER OF DESIGN AND ENVIRONMENT
March 19, 2010
Christine M. Reed
DIRECTOR OF HIGHWAYS, CHIEF ENGINEER

**PRINTED BY THE AUTHORITY
OF THE STATE OF ILLINOIS**