

STATE OF ILLINOIS  
DEPARTMENT OF TRANSPORTATION


SUMMARY OF QUANTITIES

HOT-MIX ASPHALT MIXTURE REQUIREMENTS	
MIXTURE TYPE	AIR VOIDS @ Ndes
Hot-Mix Asphalt Surface Course, Mix "D", N70 (1L, 9.5mm)	4% @ 70 Gyr.

The unit weight used to calculate all HMA Surface mixture quantities is 112 Lbs./Sq. Yd./In.

DEX OF SHEETS

- Title Sheet
- Index of Sheets, State Standards, General Notes and Summary of Quantities
- Maintenance of Traffic
- \* 3-4 Structure Plans S1-S10
- 5-14 District One Standards
- 15-16 Highway Standards

\* Added 4A, 4B. 

INDEX OF HIGHWAY STANDARDS

Standard No.	Description
600001	Standard Symbols, Abbreviations, And Patterns
600002	Areas Of Reinforcement Rebars
600003	Pavement Joints
600004	Name Plate For Bridge
600005	Steel Plate Beam Guardrail
701301	Lane Closure, 2L, 2W, Short Time Operations
701306	Lane Closure, 2L, 2W, Slow Moving Operations, Day Only
701321	Lane Closure, 2L, 2W, Bridge Repair with Barrier
701501	Urban Lane Closure, 2L, 2W, Undivided
701502	Urban Lane Closure, 2L, 2W, Bidirectional Left Turn
701602	Urban Lane Closure, Multilane 2W, Bidirectional Left Turn
701606	Urban Lane Closure, Multilane 2W, with Mountable Median
701801	Traffic Control Devices
704001	Temporary Concrete Barrier
780001	Typical Pavement Markings
781001	Typical Applications Raised Reflective Pavement Markers

GENERAL NOTES

- These plans have been prepared from notes received from IDOT Field Maintenance Engineers.
- 20 (3 m) transitions shall be used to match proposed items of work to existing items in the field, unless otherwise shown. The transitions shall be paid for at the contract unit price for the proposed item of work specified.
- Where artificial lighting is utilized in night operations, the Contractor shall exercise the utmost precautions in preventing adverse visibility to the motoring public and adjoining residential areas.
- The engineer shall be the sole judge concerning curing time for the various hot-mix asphalt lifts.
- For stabilization, all Type III barricades shall require a minimum of four (4) sandbags per barricade.
- The Resident Engineer must contact the Traffic Control Supervisor at (847)705-4470 at least 72 hours prior to installation of the temporary control devices.
- The Resident Engineer shall contact the Area Traffic Field Engineer at (847)715-8419 at least two (2) weeks prior to the placement of permanent pavement markings.
- All pavement markings and raised reflectors affected by the bridge repairs shall be replaced. Nominal quantities have been included in the contract for this work.
- Contractor will not be allowed to set up yard or field office on State property without written permission from the Department.
- Scale these plans for construction purposes.
- Dimensions and details relative to existing plans are subject to routine variations. The Contractor shall field verify existing dimensions and details affecting construction and make necessary approved adjustments prior to construction or use of materials. Such variations shall not be cause for additional compensation change in scope of the work. However, the Contractor will be paid for the quantity actually furnished based upon the unit price bid for the work.
- During construction operations, loose material deposits that obstruct the flow of water in draining the area shall be removed before the end of each work day. At the conclusion of construction operations, all drainage structures (new and existing) shall be free from all dirt and debris. This work will not be paid for separately but shall be considered incidental to the contract.
- All Type I and Type II barricades shall have two (2) sandbags on the bottom rail.
- The quantities for Hot-Mix Asphalt Surface Removal (Deck); Hot-Mix Asphalt Surface Removal, 1/2"; and Hot-Mix Asphalt Surface Course, Mix "D", N70 have been prepared assuming 1/2 inch thick hot-mix asphalt overlays. Removal and replacement of the entire thickness of existing overlay is required.
- Before ordering storm sewers, catch basins, pipe culverts, pipe drains, and manholes, the contractor shall contact the engineer as to the exact length and quantity required.
- All raised reflective pavement markers (bridge) shall be low profile.

CODE	ITEM DESCRIPTION	UNIT	QUANTITY	URBAN QUANTITY	CONST. TYPE CODE STRUCTURE X2B1-2A FEDERAL 803 STA 20%
40600100	Bituminous Materials (Prime Coat)	Gallon	23	23	23
40603340	Hot-Mix Asphalt Surface Course, Mix "D", N70	Ton	19	19	19
42001300	Protective Coat	Sq.Yd.	790	790	790
44000155	Hot-Mix Asphalt Surface Removal, 1 1/2"	Sq.Yd.	224	224	224
44000915	Hot-Mix Asphalt Surface Removal (Deck)	Sq.Yd.	58	58	58
50102400	Concrete Removal	Cu.Yd.	29.8	29.8	29.8
50300100	Floor Drains	Each	8	8	8
50300255	Concrete Superstructure	Cu.Yd.	29.8	29.8	29.8
50300260	Bridge Deck Grooving	Sq.Yd.	555	555	555
50500405	Furnishing and Erecting Structural Steel	Pound	2,620	2,620	2,620
50500715	Jack and Remove Existing Bearings	Each	18	18	18
50800205	Reinforcement Bars, Epoxy Coated	Pound	2,140	2,140	2,140
50800515	Bar Splicers	Each	22	22	22
52000110	Preformed Joint Strip Seal	Foot	120	120	120
52100010	Elastomeric Bearing Assembly, Type I	Each	18	18	18
52100520	Anchor Bolts, 1"	Each	36	36	36
67000400	Engineer's Field Office, Type A	Cal.Mo.	3	3	3
67100100	Mobilization	LSum	1	1	1
70101800	Traffic Control and Protection, (Special)	LSum	1	1	1
70301000	Work Zone Pavement Marking Removal	Sq.Ft.	2,400	2,400	2,400
70400100	Temporary Concrete Barrier	Foot	160	160	160
70400200	Relocate Temporary Concrete Barrier	Foot	160	160	160
78000200	Thermoplastic Pavement Marking - Line 4"	Foot	2,500	2,500	2,500
78008210	Polyurea Pavement Marking, Type I - Line 4"	Foot	300	300	300
78100105	Raised Reflective Pavement Marker (Bridge)	Each	10	10	10
78100200	Temporary Raised Reflective Pavement Marker	Each	10	10	10
78300100	Pavement Marking Removal	Sq.Ft.	900	900	900
78300200	Raised Reflective Pavement Marker Removal	Each	25	25	25
85000300	Maintenance of Existing Traffic Signal Installation	L Sum	1	1	1
89000100	Temporary Traffic Signal Installation	Each	1	1	1
X0322185	Bridge Deck Latex Concrete Overlay, 2 1/4 Inches	Sq.Yd.	580	580	580
X0322256	Temporary Information Signing	Sq.Ft.	50	50	50
X0325305	Structural Repair of Concrete (Depth Equal To or Less Than 5 Inches)	Sq.Ft.	145	145	145
X0325775	Wet Reflective Temporary Tape, Type III, 4 Inch	Foot	2,400	2,400	2,400
X0325841	Wet Reflective Temporary Tape, Type III, 24 Inch	Foot	45	45	45
X0326766	Clean & Reseal Relief Joint	Foot	96	96	96
Z0006204	Bridge Deck Hydro-Scarification 1/2"	Sq Yd	580	580	580
Z0016002	Deck Slab Repair (Full Depth, Type II)	Sq Yd	24	24	24
Z0030250	Impact Attenuators, Temporary (Non-Reflective), Test Level 3	Each	2	2	2
X0325787	Temporary Traffic Signal Timing	Each	1	1	1
Z0030350	Impact Attenuators, Relocate (Non-Reflective), Test Level 3	Each	2	2	2

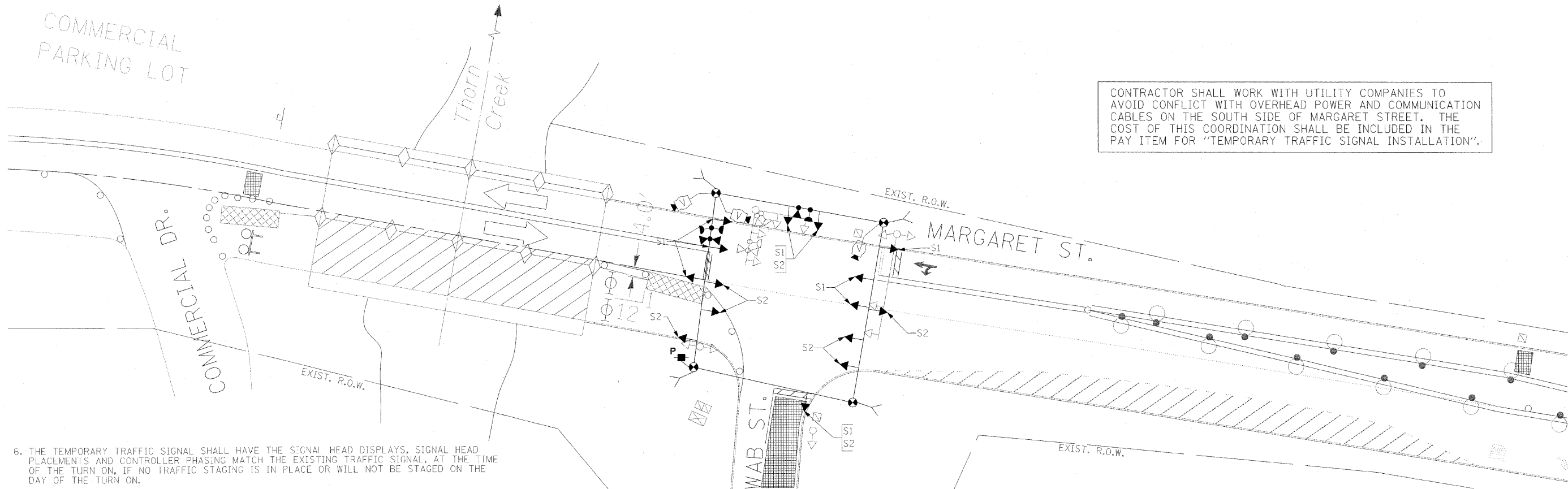
Rev. 4-13-10

Rev. 4-1-10

DESIGNED - J.W. KOONCE	REVISED -	STATE OF ILLINOIS DEPARTMENT OF TRANSPORTATION	GENERAL NOTES, INDEX OF SHEETS, SUMMARY OF QUANTITIES		F.A. RTE. 1620	SECTION 431-1	COUNTY	TOTAL SHEETS 16	SHEET NO. 2
DRAWN - V. CHAVEZ	REVISED -		SCALE:	SHEET NO. OF SHEETS STA.	TO S	ILLINOIS	CONTRACT NO. 60J82		
CHECKED - J.W. KOONCE	REVISED -								
DATE - JANUARY, 2010	REVISED -								

NOTES FOR TEMPORARY TRAFFIC SIGNALS

1. ALL CONTROL EQUIPMENT INCLUDING EMERGENCY PRE-EMPTION AND COMMUNICATION DEVICES FOR THE TEMPORARY TRAFFIC SIGNAL(S) SHALL BE FURNISHED BY THE CONTRACTOR.
2. ONLY CONTROLLERS SUPPLIED BY ONE OF THE DISTRICT APPROVED CLOSED LOOP EQUIPMENT MANUFACTURERS WILL BE APPROVED FOR USE AT TEMPORARY SIGNAL LOCATIONS. ALL CONTROLLERS USED FOR TEMPORARY TRAFFIC SIGNALS SHALL BE FULLY ACTUATED NEMA MICROPROCESSOR BASED WITH RS232 DATA ENTRY PORTS COMPATIBLE WITH EXISTING MONITORING SOFTWARE APPROVED BY IDOT DISTRICT 1, INSTALLED IN A NEMA TS2 CABINET. ONLY ONE BRAND OF CONTROLLER WILL BE ACCEPTED FOR ANY ONE CONTRACT.
3. ALL TRAFFIC SIGNAL SECTIONS AND PEDESTRIAN SIGNAL SECTIONS SHALL BE LED AND 12" (300mm) DIAMETER. HEADS SHALL BE PLACED AS INDICATED ON THE TEMPORARY TRAFFIC SIGNAL PLAN OR AS DIRECTED BY THE ENGINEER. PEDESTRIAN SIGNALS SHALL INCLUDE SOLID INTERNATIONAL SYMBOLS. PEDESTRIAN SIGNALS WITH COUNTDOWN TIMERS SHALL BE USED WHEN THE EXISTING INSTALLATION UTILIZES COUNTDOWN TYPE OR AS DIRECTED BY THE ENGINEER. COUNTDOWN TYPE PEDESTRIAN SIGNALS ARE NOT TO BE INSTALLED AT A RAILROAD INTERSECTION. THE CONTRACTOR SHALL FURNISH ENOUGH CABLE SLACK TO RELOCATE HEADS TO ANY POSITION ON THE SPAN WIRE OR AT LOCATIONS ILLUSTRATED ON THE PLANS FOR CONSTRUCTION STAGING. THE TEMPORARY TRAFFIC SIGNAL SHALL REMAIN IN OPERATION DURING ALL SIGNAL HEAD RELOCATIONS. EACH TEMPORARY TRAFFIC SIGNAL HEAD SHALL HAVE ITS OWN CABLE FROM THE CONTROLLER CABINET TO THE SIGNAL HEAD.
4. ALL EXISTING STREET NAME AND INTERSECTION REGULATORY SIGNS SHALL BE REMOVED FROM EXISTING POLES, RELOCATED AND SECURELY FASTENED TO THE SPAN WIRE OR WOOD POLE AS DIRECTED BY THE ENGINEER.
5. ANY TEMPORARY SIGNAL WITHIN AN EXISTING CLOSED LOOP TRAFFIC SIGNAL SYSTEM SHALL BE INTERCONNECTED TO THAT SYSTEM USING SIMILAR BRAND CONTROL EQUIPMENT.



CONTRACTOR SHALL WORK WITH UTILITY COMPANIES TO AVOID CONFLICT WITH OVERHEAD POWER AND COMMUNICATION CABLES ON THE SOUTH SIDE OF MARGARET STREET. THE COST OF THIS COORDINATION SHALL BE INCLUDED IN THE PAY ITEM FOR "TEMPORARY TRAFFIC SIGNAL INSTALLATION".

6. THE TEMPORARY TRAFFIC SIGNAL SHALL HAVE THE SIGNAL HEAD DISPLAYS, SIGNAL HEAD PLACEMENTS AND CONTROLLER PHASING MATCH THE EXISTING TRAFFIC SIGNAL. AT THE TIME OF THE TURN ON, IF NO TRAFFIC STAGING IS IN PLACE OR WILL NOT BE STAGED ON THE DAY OF THE TURN ON.
7. UNINTERRUPTIBLE POWER SUPPLY (UPS) SYSTEMS SHALL BE INSTALLED AND MADE OPERATIONAL AT TEMPORARY TRAFFIC SIGNAL INSTALLATIONS WHERE UPS IS INSTALLED AT THE EXISTING TRAFFIC SIGNAL, TEMPORARY TRAFFIC SIGNALS AT RAILROAD INTERSECTIONS, AND TEMPORARY TRAFFIC SIGNALS AT INTERSECTIONS WITH FIRE STATION ACTUATED EMERGENCY VEHICLE PRE-EMPTION, OR WHEN INDICATED ON THE PLANS.
8. TRAFFIC SIGNAL MANAGEMENT SYSTEMS SHALL BE MAINTAINED IN OPERATION AS INDICATED ON THE PLANS OR AS DIRECTED BY THE ENGINEER. REQUIRED EQUIPMENT SHALL BE AS SHOWN ON THE PLANS AND THE CONTRACTOR SHALL PLACE THE EQUIPMENT IN OPERATION TO THE SATISFACTION OF THE ENGINEER AND THE AGENCY RESPONSIBLE FOR THE TRAFFIC SIGNAL MANAGEMENT SYSTEM.
9. DETECTION AT TEMPORARY TRAFFIC SIGNALS SHALL BE INCLUDED FOR ALL APPROACHES OF THE INTERSECTION UNLESS INDICATED OTHERWISE ON THE PLANS. THE DETECTION SYSTEM MUST MEET THE SPECIFICATIONS OF DISTRICT 1 AND THE CONTRACTOR SHALL PLACE THE DETECTORS INTO OPERATION TO THE SATISFACTION OF THE ENGINEER.
10. WHEN PAN, TILT, ZOOM CAMERAS ARE INSTALLED AT THE EXISTING INTERSECTION OR ARE CALLED FOR IN THE PLANS, THE CONTRACTOR SHALL BE RESPONSIBLE FOR INSTALLING AND MAINTAINING THE CAMERAS TO THE SATISFACTION OF THE ENGINEER AND THE AGENCY RESPONSIBLE FOR THE CAMERAS.

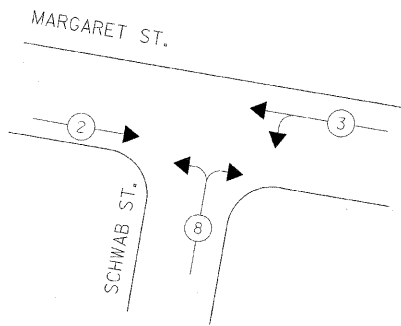
CONSTRUCTION NOTES:

- NOTE 1: ALL THE VIDEO DETECTION ZONES SHALL BE REDEFINED FOR EACH CONSTRUCTION STAGE. THIS WORK IS INCIDENTAL TO THE PAY ITEM "TEMPORARY TRAFFIC SIGNAL INSTALLATION".
- NOTE 2: THE VIDEO DETECTION ZONES SHOWN ON THE PLAN, FOR BOTH APPROACHES OF MARGARET STREET ARE FOR CONSTRUCTION STAGE 1.

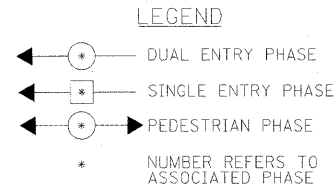
Added Sheet 4-13-10

FILE NAME =	USER NAME = #USER#	DESIGNED - PKG, MAA	REVISED -	<b>STATE OF ILLINOIS DEPARTMENT OF TRANSPORTATION</b>	<b>MARGARET ST. AT SCHWAB ST. TEMPORARY INTERSECTION PLAN</b>			F.A.P. RTE.	SECTION	COUNTY	TOTAL SHEETS	SHEET NO.
#FILEL#		DRAWN - MAA, EA	REVISED -					1620	431-1	COOK	16	4A
	PLOT SCALE = #SCALE#	CHECKED - PKG	REVISED -					CONTRACT NO. 60J82				
	PLOT DATE = #DATE#	DATE - 03/31/2010	REVISED -					ILLINOIS FED. AID PROJECT				
				SCALE:	SHEET NO. OF SHEETS	STA. TO STA.						

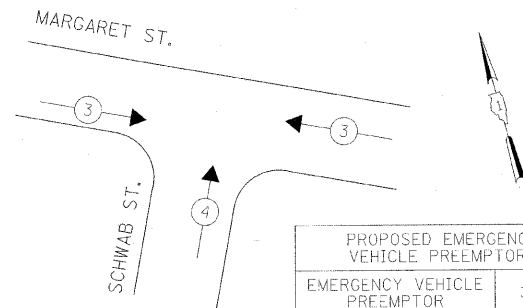
CONTROLLER SEQUENCE



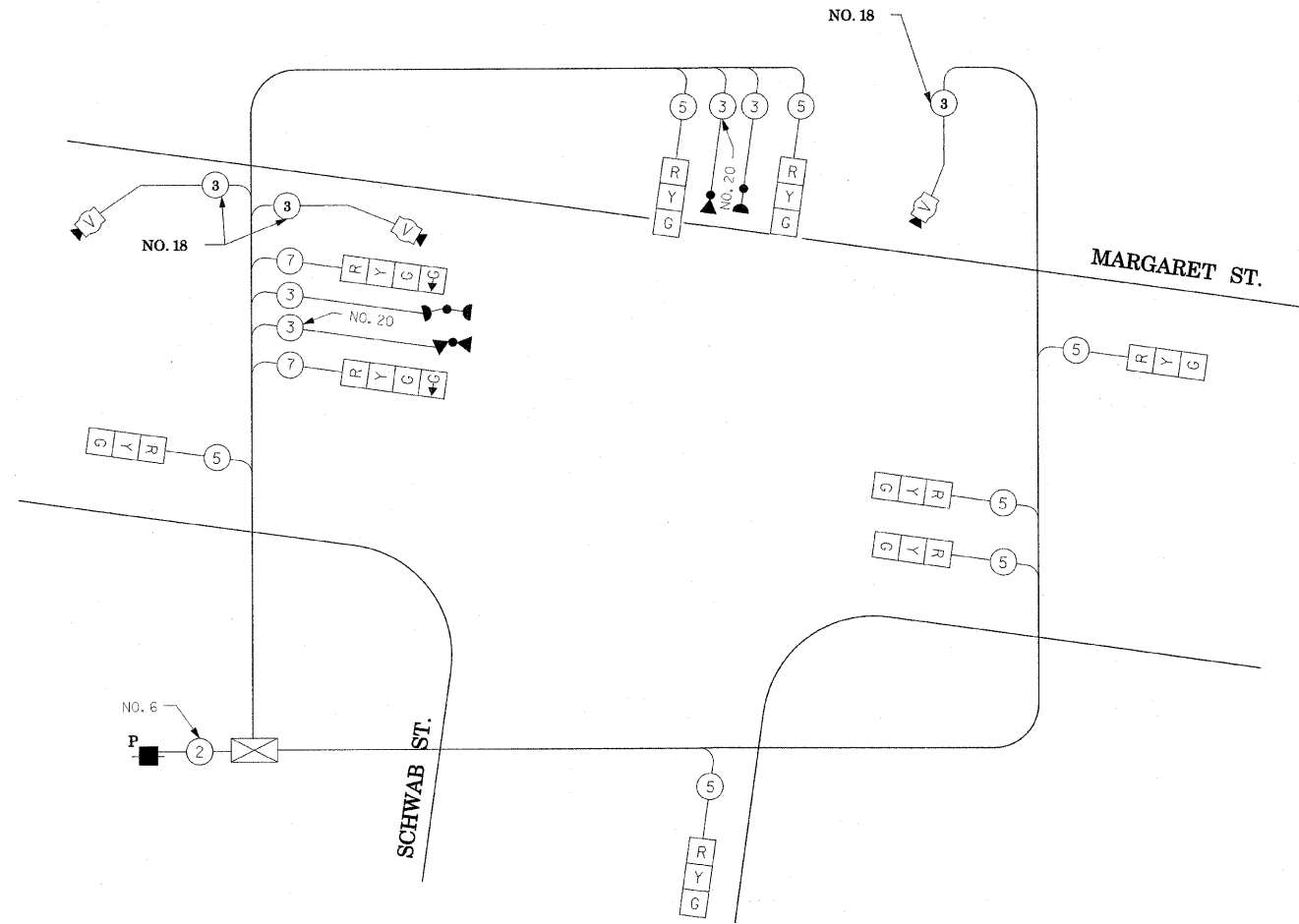
TEMPORARY PHASE DESIGNATION DIAGRAM



EMERGENCY VEHICLE PREEMPTION SEQUENCE



PROPOSED EMERGENCY VEHICLE PREEMPTORS		
EMERGENCY VEHICLE PREEMPTOR	3	4
MOVEMENT	↔	↑



CABLE PLAN  
(NOT TO SCALE)

STAGES: STAGE 1 AND STAGE 2

NOTE: ALL THE VIDEO DETECTION ZONES SHALL BE REDEFINED FOR EACH CONSTRUCTION STAGE. THIS WORK IS INCIDENTAL TO THE PAY ITEM "TEMPORARY TRAFFIC SIGNAL INSTALLATION".

THE EXISTING TRAFFIC SIGNAL CONTROLLER SHALL BE DISABLED AND THE EXISTING TRAFFIC SIGNAL HEADS SHALL BE BAGGED DURING THE TIME WHEN TEMPORARY TRAFFIC SIGNAL INSTALLATION IS IN OPERATION. NO EXTRA COMPENSATION SHALL BE ALLOWED FOR THE SAME AND SHALL BE INCIDENTAL TO PAY ITEM "TEMPORARY TRAFFIC SIGNAL INSTALLATION"

SCHEDULE OF QUANTITIES

QUANTITY	UNIT	ITEM
1	EACH	TEMPORARY TRAFFIC SIGNAL INSTALLATION
1	EACH	TEMPORARY TRAFFIC SIGNAL TIMING

I.D.O.T. TRAFFIC SIGNAL INSTALLATION ELECTRICAL SERVICE REQUIREMENTS					TOTAL WATTAGE
TYPE	NO LAMPS	WATTAGE		OPERATION	
		INCAND.	LED		
SIGNAL (RED)	9	135	17	0.50	76.5
(YELLOW)	9	135	25	0.25	56.25
(GREEN)	11	135	15	0.25	41.25
ARROW		135	12	0.10	
PED. SIGNAL		90	25	1.00	
CONTROLLER	1	100	100	1.00	100
ILLUM. SIGN				0.05	
FLASHER				0.50	
ENERGY COSTS TO:				TOTAL =	274.0

ENERGY SUPPLY CONTACT: GREGG TRIEMSTRA  
PHONE: (708) 235-2331  
COMPANY: COMMONWEALTH EDISON

FILE NAME =	USER NAME = #USER#	DESIGNED - PKG, MAA	REVISED -
#FILE#		DRAWN - MAA, EA	REVISED -
	PLOT SCALE = #SCALE#	CHECKED - PKG	REVISED -
	PLOT DATE = #DATE#	DATE - 03/31/2010	REVISED -

STATE OF ILLINOIS  
DEPARTMENT OF TRANSPORTATION

MARGARET ST. AT SCHWAB ST.  
TEMPORARY CABLE PLAN

F.A.P. RTE.	SECTION	COUNTY	TOTAL SHEETS	SHEET NO.
1620	431-1	COOK	16	4B
			CONTRACT NO. 60J82	
ILLINOIS FED. AID PROJECT				

SCALE: SHEET NO. OF SHEETS STA. TO STA.

Added Sheet 4-15-10