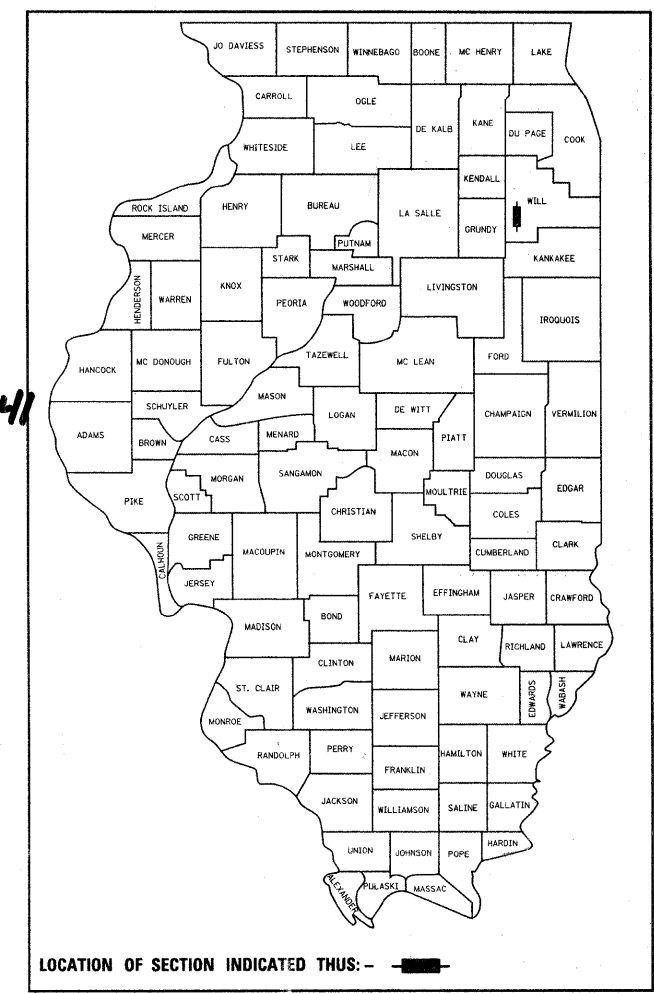


F.A.I. RTE.	SECTION	COUNTY	TOTAL SHEETS	SHEET NO.
55	99 (1&2) RS-12	WILL	110	1
ILLINOIS			CONTRACT NO. 60K04	

* 110 + 1 = 111

D-91-334-10



STATE OF ILLINOIS
DEPARTMENT OF TRANSPORTATION
DIVISION OF HIGHWAYS

PROPOSED HIGHWAY PLANS

F.A.I. ROUTE 55 (INTERSTATE 55)
KANKAKEE RIVER TO S. OF I-80
SECTION: 99 (1&2) RS-12
RESURFACING AND BRIDGE REHABILITATION
WILL COUNTY
C-91-334-10

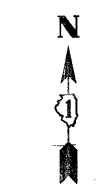
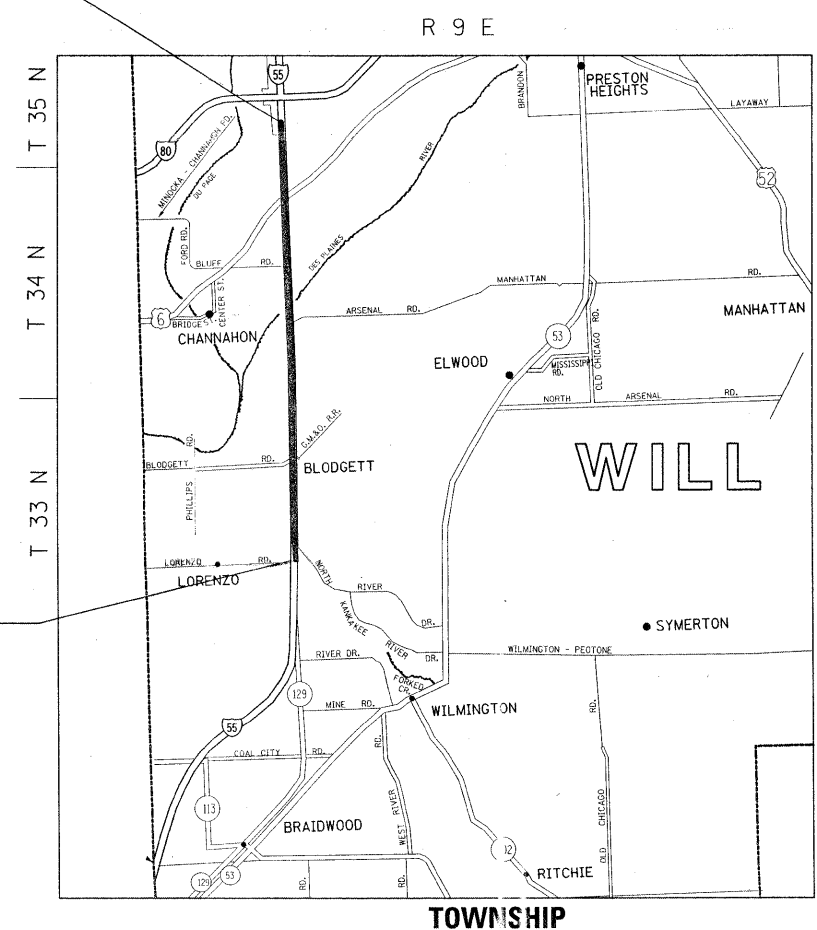
PROJECT:
IM-055-6(242)241

FOR INDEX OF SHEETS, SEE SHEET NO. 2

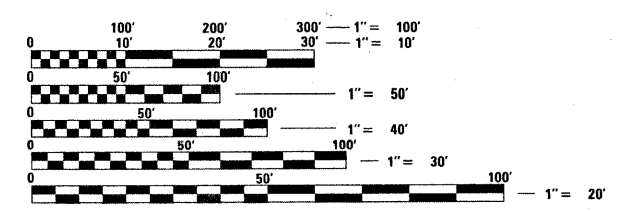
THIS PROJECT IS LOCATED IN THE CITY OF JOLIET AND VILLAGE OF CHANNAHON

PROJECT ENDS:
STA. 855 + 00

PROJECT BEGINS:
STA. 400 + 00



TRAFFIC DATA:
2006 ADT= 91000
POSTED SPEED
LIMIT= 65 MPH



FULL SIZE PLANS HAVE BEEN PREPARED USING STANDARD ENGINEERING SCALES. REDUCED SIZED PLANS WILL NOT CONFORM TO STANDARD SCALES. IN MAKING MEASUREMENTS ON REDUCED PLANS, THE ABOVE SCALES MAY BE USED.

J.U.L.I.E.
JOINT UTILITY LOCATION INFORMATION FOR EXCAVATION
1-800-892-0123
OR 811

PROJECT ENGINEER KARI SMITH (847) 705-4437
PROJECT MANAGER KEN ENG
CONTRACT NO. 60K04

GROSS LENGTH OF IMPROVEMENT = 45500 LINEAL FEET = 8.61 MILES
NET LENGTH OF IMPROVEMENT = 36922 LINEAL FEET = 6.99 MILES

STATE OF ILLINOIS
DEPARTMENT OF TRANSPORTATION
DIVISION OF HIGHWAYS

SUBMITTED JANUARY 27, 2010

Diane M. O'Keefe
DEPUTY DIRECTOR OF HIGHWAYS, REGION ENGINEER
March 19, 2010

Scott E. Stitt, P.E.
Acting ENGINEER OF DESIGN AND ENVIRONMENT
March 19, 2010

Christine M. Reed
DIRECTOR OF HIGHWAYS, CHIEF ENGINEER

PRINTED BY THE AUTHORITY
OF THE STATE OF ILLINOIS