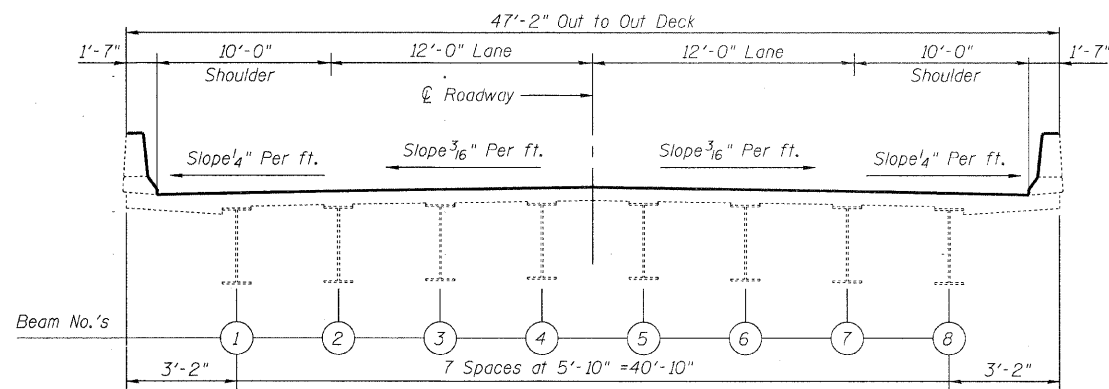
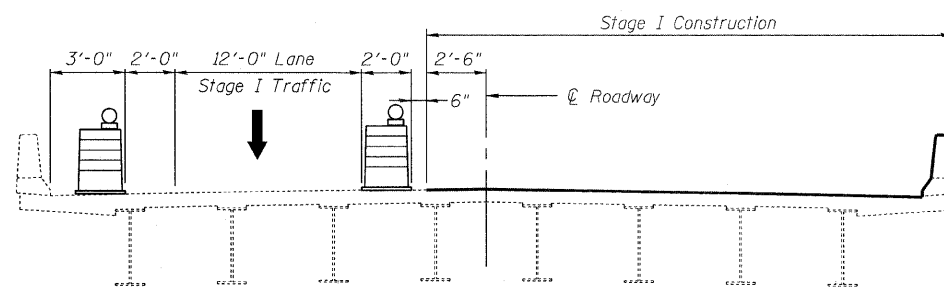


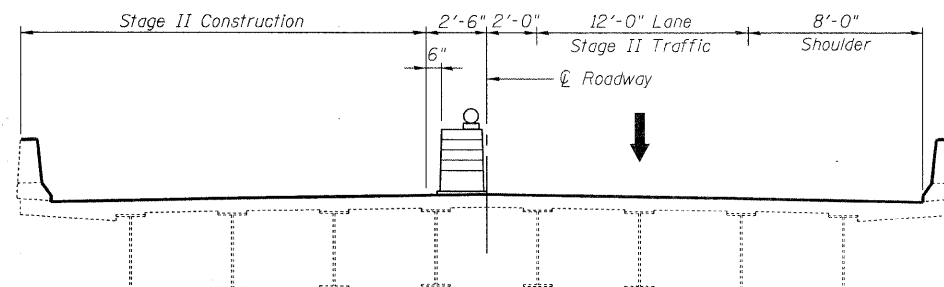
STATE OF ILLINOIS
DEPARTMENT OF TRANSPORTATION



CROSS SECTION
(LOOKING NORTH)



STAGE I
CROSS SECTION
(LOOKING NORTH)



STAGE II
CROSS SECTION
(LOOKING NORTH)

PROPOSED CONSTRUCTION STAGING

CONSTRUCTION STAGING
I-55 SOUTHBOUND OVER
ILLINOIS & MICHIGAN CANAL
SEC. 86(VB-I-R,B-R-I,B-I-BR)
WILL COUNTY
STATION 989+33.71
STRUCTURE NO. 099-0010

DESIGNED	TPP
CHECKED	RJL
DRAWN	JS/SCS
CHECKED	TPP

ABNA
9901 S. Western Ave.
Chicago, IL 60643
Ph. 773-881-4788
F: 773.239.3728
DESIGN FIRM REG. 184.002117

SHEET NO. 2 3 SHEETS	E.A.I. RTE.	SECTION	COUNTY	TOTAL SHEETS	SHEET NO.
	55	99 (122) RS+12	WILL	110	70
FED. ROAD DIST. NO. ILLINOIS			FED. AID PROJECT		
			CONTRACT NO. 60K04		