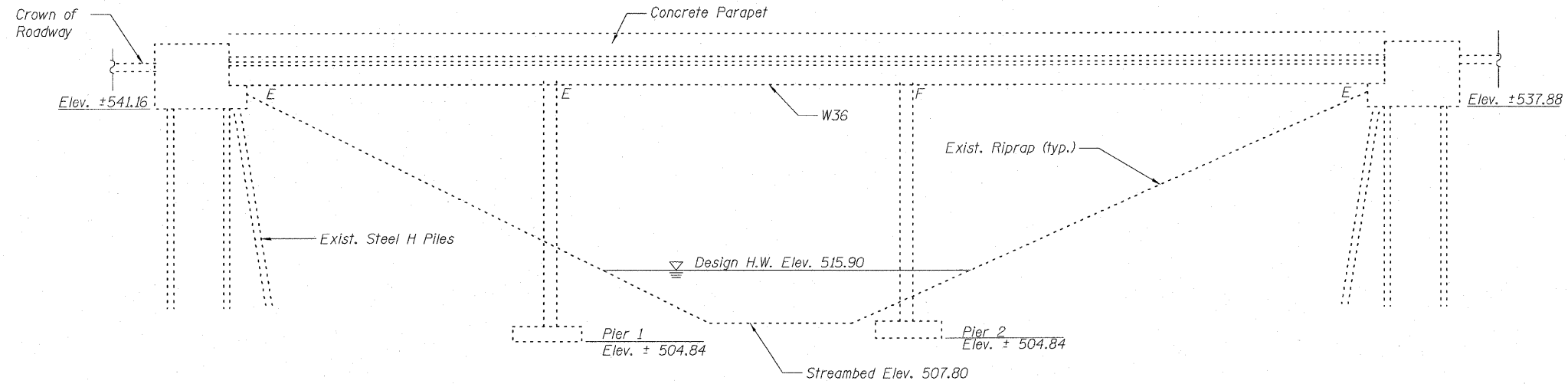


STATE OF ILLINOIS  
DEPARTMENT OF TRANSPORTATION

**GENERAL NOTES**

Plan dimensions and details relative to existing plans are subject to nominal construction variations. The Contractor shall field verify existing dimensions and details affecting new construction and make necessary approved adjustments prior to construction or ordering of materials. Such variations shall not be cause for additional compensation for a change in scope of the work, however, the Contractor will be paid for the quantity actually furnished at the unit price bid for the work.

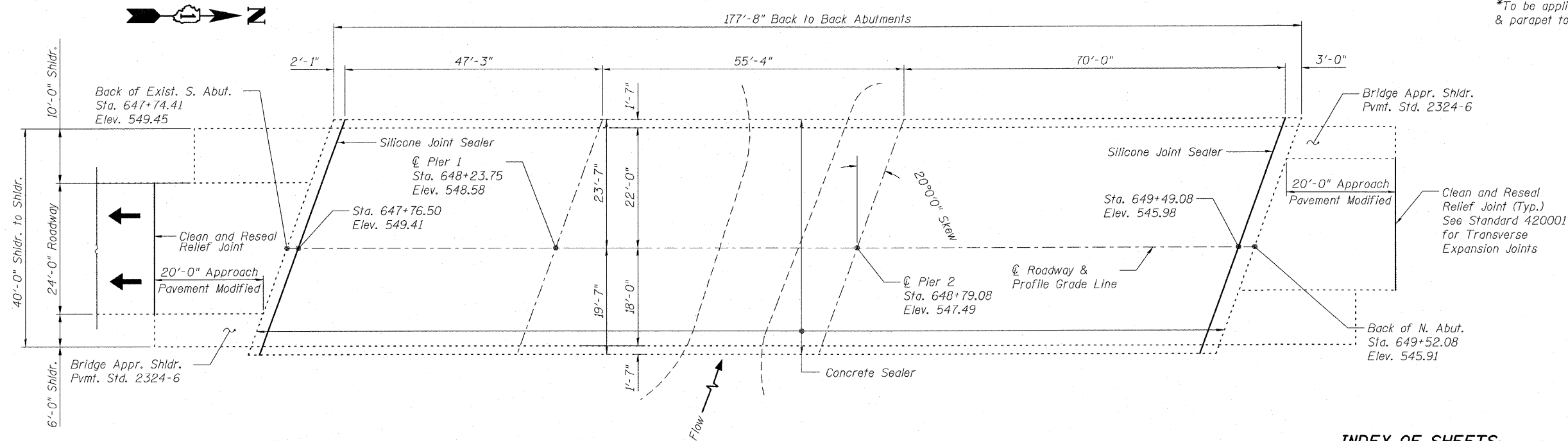


**ELEVATION**

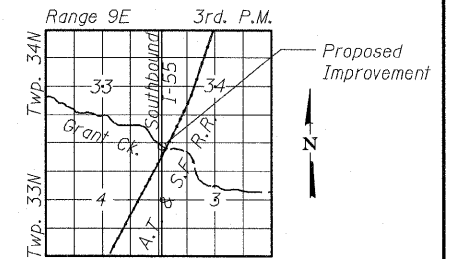
**TOTAL BILL OF MATERIAL**

ITEM	UNIT	TOTAL
* Concrete Sealer	Sq. Ft.	8446
Silicone Joint Sealer	Foot	92
Deck Slab Repair (Partial)	Sq. Yd.	1.0
Bridge Deck Concrete Crack Sealer	Foot	50
Clean and Reseal Relief Joint	Foot	48

\*To be applied to deck surface, parapet face, & parapet top.



**PLAN**



**LOCATION SKETCH**

**GENERAL PLAN & ELEVATION  
I-55 SOUTHBOUND OVER  
GRANT CREEK  
F.A.I. RT. 55 - SEC. 87R  
WILL COUNTY  
STATION 648+62.79  
STRUCTURE NO. 099-0005**

**INDEX OF SHEETS:**

1. General Plan & Elevation
2. Cross Section & Construction Staging
3. Deck Repairs & Joint Detail

DESIGNED	BRT
CHECKED	BJM
DRAWN	JNH
CHECKED	BJM



*B. Robert Tessitore*  
B. Robert Tessitore Date  
Expires: 11-30-10



**Wight & Company**  
2500 North Frontage Road, Darien, IL 60561  
630.969.7000 630.969.7979 fax  
Design Firm Registration 184-000451

SHEET NO.	F.A.I. RTE.	SECTION	COUNTY	TOTAL SHEETS	SHEET NO.
1	55	99 (1+2) 25-12	WILL	110	78
3 SHEETS					
CONTRACT NO. 60K04					
FED. ROAD DIST. NO. ILLINOIS FED. AID PROJECT					