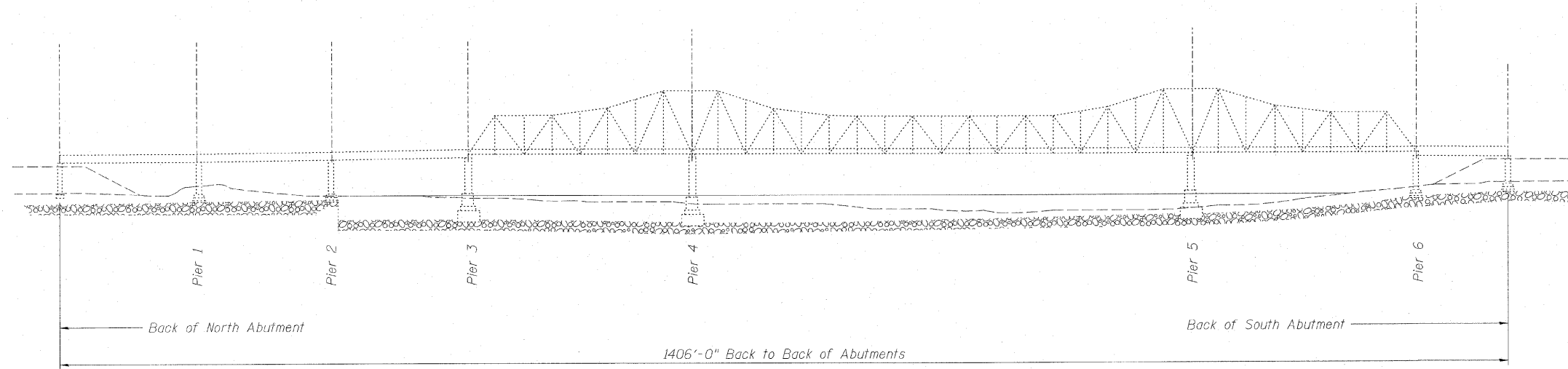


STATE OF ILLINOIS  
DEPARTMENT OF TRANSPORTATION

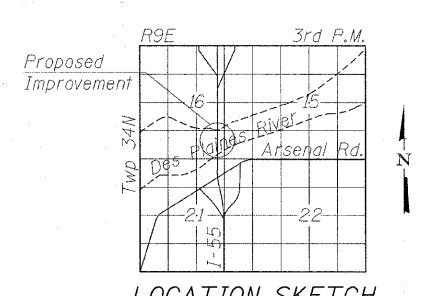
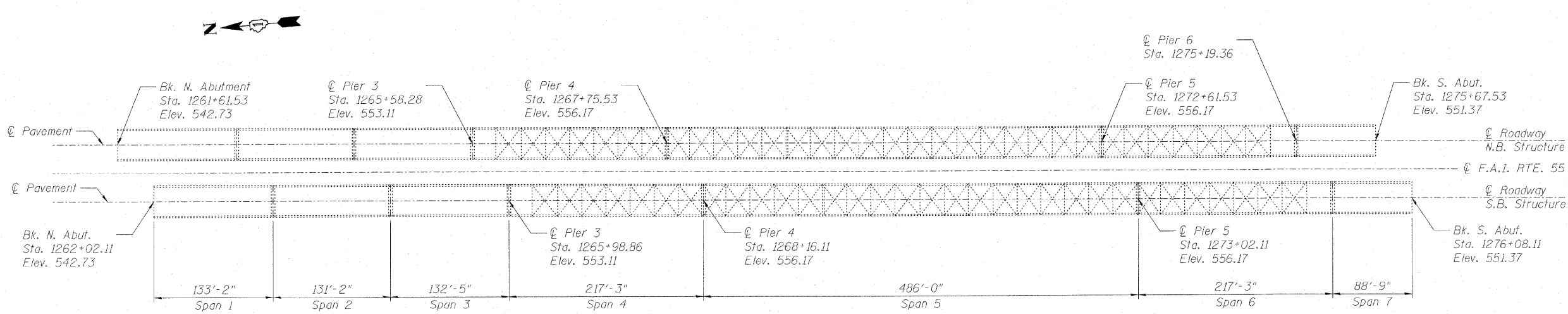


ELEVATION

TOTAL BILL OF MATERIAL

| ITEM  | UNIT    | TOTAL |
|---|---------|-------|
| Bituminous Materials (Prime Coat)           | Gal.    | 59    |
| Work Zone Pavement Marking Removal          | Sq. Ft. | 837   |
| Thermoplastic Pavement Marking - Line 4"    | Ft.     | 1841  |
| Thermoplastic Pavement Marking - Line 5"    | Ft.     | 230   |
| Pavement Marking Removal                    | Sq. Ft. | 581   |
| Wet Reflective Temporary Tape, Type III, 4" | Ft.     | 1935  |
| Wet Reflective Temporary Tape, Type III, 5" | Ft.     | 460   |
| Partial Depth Patch, Mix "F", N90           | Ton     | 33.1  |
| Asphaltic Emulsion Slurry Seal              | Sq. Yd. | 3324  |

All deck surface on spans 4, 5, & 6 will have Asphaltic Emulsion Slurry Seal.



LOCATION SKETCH

GENERAL NOTES

Plan dimensions and details relative to existing plans are subject to nominal construction variations. The Contractor shall field verify existing dimensions and details affecting new construction and make necessary approved adjustments prior to construction or ordering of materials. Such variations shall not be cause for additional compensation for a change in scope of the work, however, the Contractor will be paid for the quantity actually furnished at the unit price bid for the work.

The Contractor should use caution when removing the existing HMA as not to damage the existing waterproofing membrane system. Any damage is to be repair at the Contractor's expense.

The Contractor must take extreme care so that the slurry material does not drain into the Des Plaines River. The deck drains must be plugged to the satisfaction of the Resident Engineer. The cost for this will be incidental to the slurry seal application.

INDEX OF SHEETS:

1. General Plan and Elevation
2. Cross Section & Staging
3. Deck Plan - Span 4 & 5
4. Deck Plan - Span 5 & 6

GENERAL PLAN AND ELEVATION  
I-55 SB OVER DES PLAINES RIVER  
F.A.I. RTE. 55 - SEC. 87BD-I-8  
WILL COUNTY  
STATION 1268+84.82  
STRUCTURE NO. 099-0008

|          |     |
|----------|-----|
| DESIGNED | BRT |
| CHECKED  | BJM |
| DRAWN    | JNH |
| CHECKED  | BJM |



*B. Robert Tessitore*  
B. Robert Tessitore  
Expires: 11-30-10  
02-24-2010  
Date



Wight & Company  
2500 North Frontage Road . Darien . IL 60561  
630.969.7000 630.969.7979 fax  
Design Firm Registration 184-000451

|   |             |                |        |              |           |
|---|-------------|----------------|--------|--------------|-----------|
| SHEET NO. 1<br>4 SHEETS                         | F.A.I. RTE. | SECTION        | COUNTY | TOTAL SHEETS | SHEET NO. |
|   | 55          | 99 (1&2) RS-12 | WILL   | 110          | 81        |
| CONTRACT NO. 60K04                              |             |                |        |              |           |
| FED. ROAD DIST. NO. - ILLINOIS FED. AID PROJECT |             |                |        |              |           |