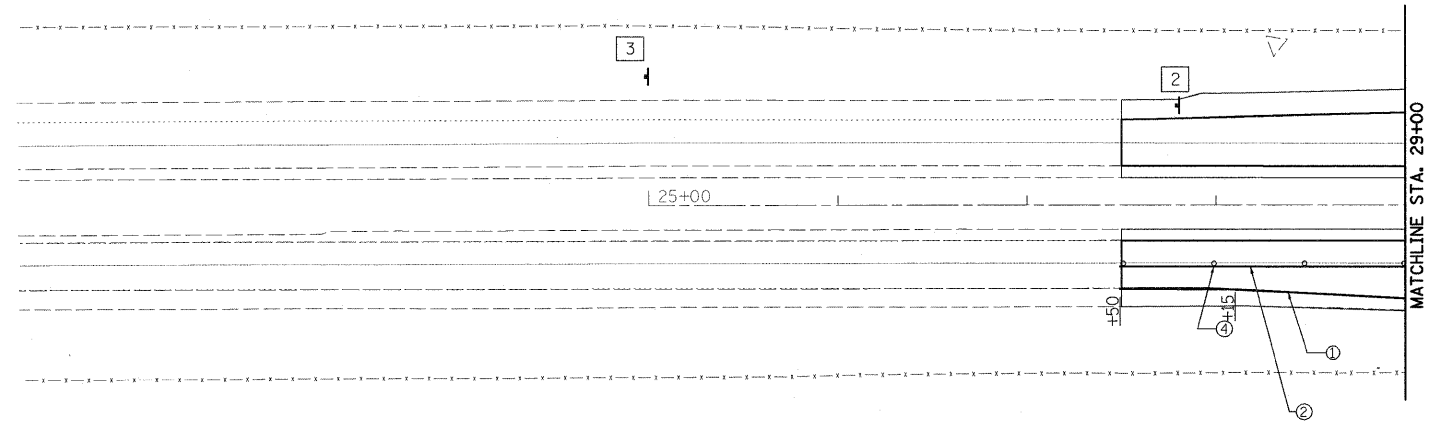
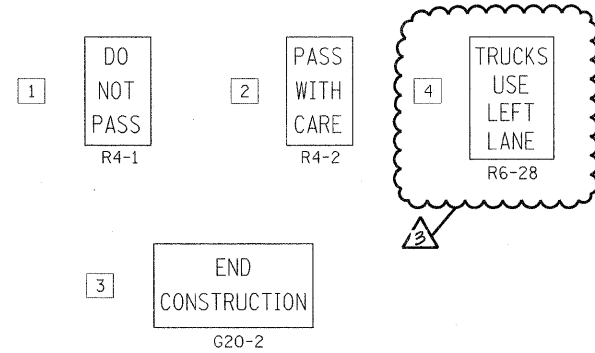


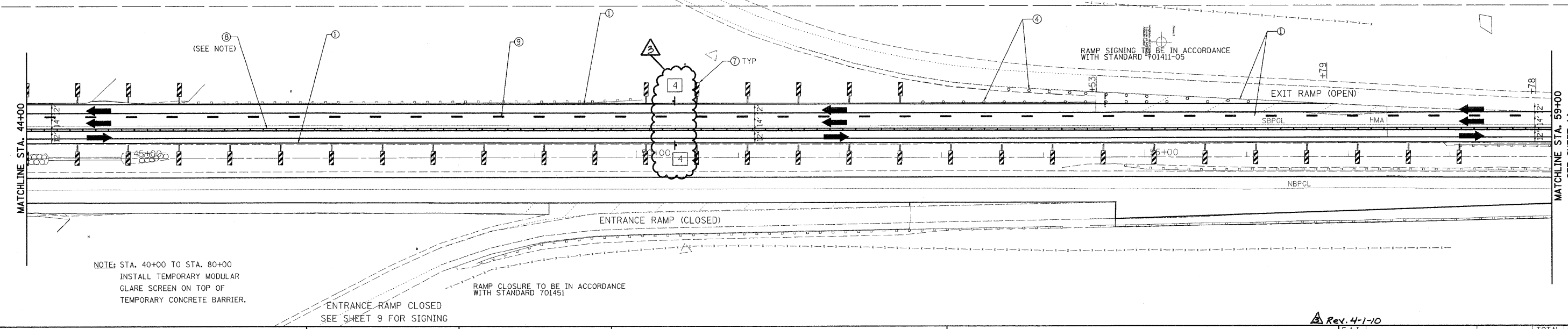
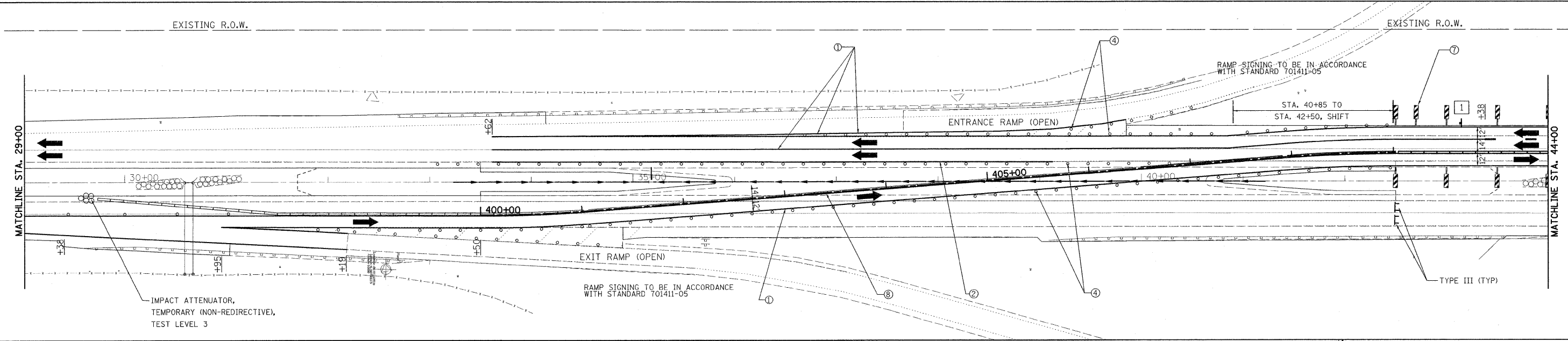


- LEGEND**
- ① WET REFLECTIVE TEMPORARY TAPE TYPE III, 4" WHITE EDGE LINE
 - ② WET REFLECTIVE TEMPORARY TAPE TYPE III, 4" YELLOW EDGE LINE
 - ③ NOT USED
 - ④ DRUMS WITH STEADY BURNING MONODIRECTIONAL LIGHT
 - ⑤ NOT USED
 - ⑥ NOT USED
 - ⑦ VERTICAL PANELS (BACK TO BACK)
 - ⑧ TEMPORARY CONCRETE BARRIER
 - ⑨ WET REFLECTIVE TEMPORARY TAPE TYPE III, 4" WHITE (10' LINE, 30' SPACE) LINE
- TEMPORARY CONCRETE BARRIER
 TEMPORARY CONCRETE BARRIER WITH MODULAR GLARE SCREEN



ADVANCED LANE CLOSURE SIGNING TO BE IN ACCORDANCE WITH STANDARD 701400-03

LANE CLOSURE TRAFFIC CONTROL (INCLUDING SIGNING) TO BE IN ACCORDANCE WITH STANDARD 701416-06



200 West Front Street
Wheaton, IL 60187

DESIGNED - KSD	REVISED -
DRAWN - KSD	REVISED -
CHECKED - CMJ	REVISED -
DATE - 03-04-09	REVISED -

STATE OF ILLINOIS
DEPARTMENT OF TRANSPORTATION

IL-55 OVER THE KANKAKEE RIVER
TRAFFIC CONTROL PLAN STAGE II

SCALE: 1" = 50' SHEET NO. 1 OF 2 SHEETS STA. 29+00.00 TO STA. 59+00.00

F.A.I. RTE. 55	SECTION 88 (B&B-1) BR	COUNTY WILL	TOTAL SHEETS 72	SHEET NO. 13
CONTRACT NO. 62930				
FED. ROAD DIST. NO. 1 ILLINOIS FED. AID PROJECT				

Rev. 4-1-10