

SUMMARY OF QUANTITIES

CODE NUMBER	PAY ITEM	UNIT	TOTAL QUANTITY	ROADWAY			TRAFFIC SIGNALS	TRAFFIC SIGNALS INTERCONNECT	LIGHTING	LOCAL LANDSCAPING	LOCAL WATER MAIN
				100% FED- ARA	80% FED- CMAO 20% LOCAL	70% FED- STP 30% LOCAL	80% FED- CMAO 20% LOCAL	80% FED- CMAO 20% LOCAL	70% FED- STP 30% LOCAL	100% VILLAGE	100% VILLAGE
				CONSTRUCTION TYPE CODE							
				1000-2A	1000-2A	1000-2A	Y031-IF	Y031-IF	Y030-1E	Y003	Y060
40601005	HOT-MIX ASPHALT REPLACEMENT OVER PATCHES	TON	45	45							
40603080	HOT-MIX ASPHALT BINDER COURSE, IL-19.0, N50	TON	515	515							
40603305	HOT-MIX ASPHALT SURFACE COURSE, MIX "C", N50	TON	82	82							
40603595	POLYMERIZED HOT-MIX ASPHALT SURFACE COURSE, MIX "F", N90	TON	125	125							
40701966	HOT-MIX ASPHALT PAVEMENT (FULL-DEPTH), 14 1/4"	SQ YD	25,937	9,125	16,812						
42001300	PROTECTIVE COAT	SQ YD	7,617			7,617					
42300200	PORTLAND CEMENT CONCRETE DRIVEWAY PAVEMENT, 6 INCH	SQ YD	472			472					
42300400	PORTLAND CEMENT CONCRETE DRIVEWAY PAVEMENT, 8 INCH	SQ YD	707			707					
42400200	PORTLAND CEMENT CONCRETE SIDEWALK 5 INCH	SQ FT	36,914			36,914					
42400800	DETECTABLE WARNINGS	SQ FT	1,140			1,140					
44000100	PAVEMENT REMOVAL	SQ YD	22,620	22,620							
44000200	DRIVEWAY PAVEMENT REMOVAL	SQ YD	2,019			2,019					
44000300	CURB REMOVAL	FOOT	300			300					
44000500	COMBINATION CURB AND GUTTER REMOVAL	FOOT	9,491			9,491					
44000600	SIDEWALK REMOVAL	SQ FT	32,687			32,687					
44002211	HOT-MIX ASPHALT REMOVAL OVER PATCHES, 2 3/4"	SQ YD	294	294							
44003100	MEDIAN REMOVAL	SQ FT	754			754					
44201811	CLASS D PATCHES, TYPE I, 14 INCH	SQ YD	135	135							
44300200	STRIP REFLECTIVE CRACK CONTROL TREATMENT	FOOT	509	509							
550A0050	STORM SEWERS, CLASS A, TYPE 1 12"	FOOT	154	154							
550A0070	STORM SEWERS, CLASS A, TYPE 1 15"	FOOT	82	82							
550A0120	STORM SEWERS, CLASS A, TYPE 1 24"	FOOT	175	175							
550A0340	STORM SEWERS, CLASS A, TYPE 2 12"	FOOT	1,228	1,228							
550A0360	STORM SEWERS, CLASS A, TYPE 2 15"	FOOT	448	448							
550A0380	STORM SEWERS, CLASS A, TYPE 2 18"	FOOT	236	236							
550A0410	STORM SEWERS, CLASS A, TYPE 2 24"	FOOT	520	520							

△ Revised 4-13-10

• - DENOTES SPECIALTY ITEMS

REVISIONS	
NAME	DATE
ADDENDUM NO. 1	4/8/10

ILLINOIS DEPARTMENT OF TRANSPORTATION
 VILLAGE OF PALATINE
 PALATINE ROAD & PLUM GROVE ROAD RECONSTRUCTION
 SMITH STREET TO US 14 (NORTHWEST HIGHWAY)
 SUMMARY OF QUANTITIES
 SCALE: VERT. DRAWN BY BA
 HORIZ. CHECKED BY
 DATE OCTOBER 19, 2009

DATE = 4/8/10
 FILE NAME = 482648D
 PLOT SCALE = 1/8"=1'-0"
 USER NAME = JUSERN

SUMMARY OF QUANTITIES

CODE NUMBER	PAY ITEM	UNIT	TOTAL QUANTITY	ROADWAY	ROADWAY	ROADWAY	TRAFFIC SIGNALS	TRAFFIC SIGNALS	LIGHTING	LOCAL LANDSCAPING	LOCAL WATER MAIN
				100% FED- ARA	80% FED- CMAO 20% LOCAL	70% FED- STP 30% LOCAL	80% FED- CMAO 20% LOCAL	80% FED- CMAO 20% LOCAL	70% FED- STP 30% LOCAL	100% VILLAGE	100% VILLAGE
				CONSTRUCTION TYPE CODE							
				1000-2A	1000-2A	1000-2A	Y031-1F	Y031-1F	Y030-1E	Y003	Y060
* Z0044800	PRESSURE CONNECTION 8" X 8"	EACH	1								1
Z0048665	RAILROAD PROTECTIVE LIABILITY INSURANCE	L SUM	1				1				
Z0053700	RESETTING SURVEY MONUMENTS	EACH	1	1							
△ Z0076600	TRAINEES	HOUR	2,500			2,500					
LR430040	PAVING BRICK SIDEWALK	SQ YD	975							975	
* X0326901	TRANSITION SLEEVE, 6"	EACH	1								1
* Z0044895	PRESSURE CONNECTION 10" X 8"	EACH	3								3
* X0326825	WATERMAIN TO BE ABANDONED, 6"	FOOT	726								726
* X8160430	UNIT DUCT, WITH, 5-1/C NO. 4, 1/C NO. 6 GROUND, 600V (EPR-TYPE RHW, 1 1/2" DIA., POLYETHYLENE	FOOT	6,977						6,977		
* XX008367	DECORATIVE LIGHTING UNIT, TYPE "D1"	EACH	37							37	
* XX008368	DECORATIVE LIGHTING UNIT, TYPE "D2"	EACH	14							14	
* XX008369	DECORATIVE LIGHTING UNIT, TYPE "D3"	EACH	1							1	
* 82500505	LIGHTING CONTROLLER, SPECIAL	EACH	2						2		
XX008364	STORM SEWER LINING, 36" DIAMETER	FOOT	147	147							
XX008365	STORM SEWER LINING, 15" DIAMETER	FOOT	95	95							
XX008366	MANHOLE TYPE A, 6' DIAMETER TYPE I FRAME, CLOSED LID, FLAT SLAB TOP	EACH	1	1							
* X0326270	RAILROAD, FULL-ACTUATED CONTROLLER AND TYPE V CABINET (SPECIAL)	EACH	1				1				
* X0325737	TEMPORARY TRAFFIC SIGNAL TIMING	EACH	3				3				
50104600	CONCRETE RETAINING WALL REMOVAL	FOOT	275	275							
X5011100	FOUNDATION REMOVAL	EACH	3	3							

△ Revised 4/3-10

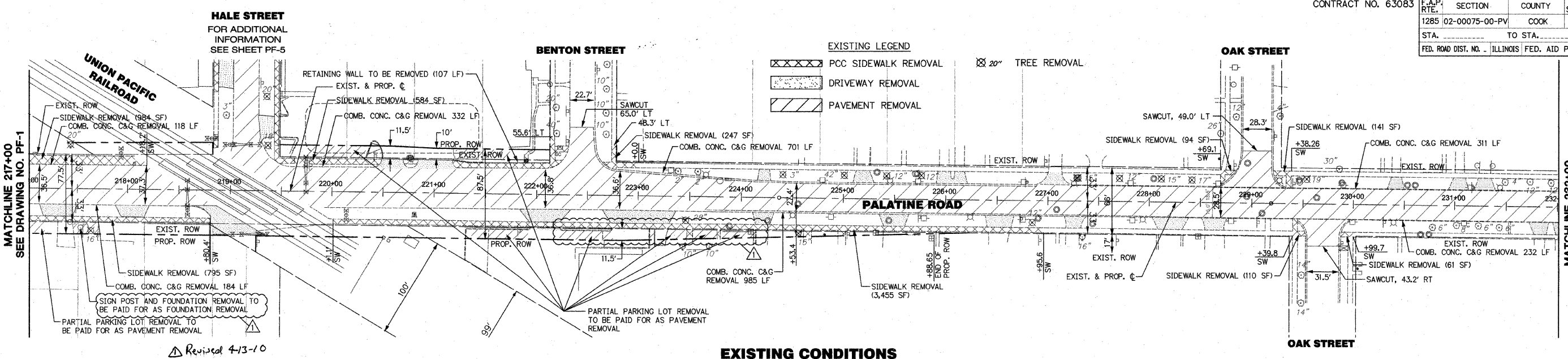
* - DENOTES SPECIALTY ITEMS
 △ - Y080

PLOT DATE * DATE *
 FILE NAME * NUMBER *
 USER NAME * USER *

REVISIONS	
NAME	DATE
ADDendum No. 1	4/8/10

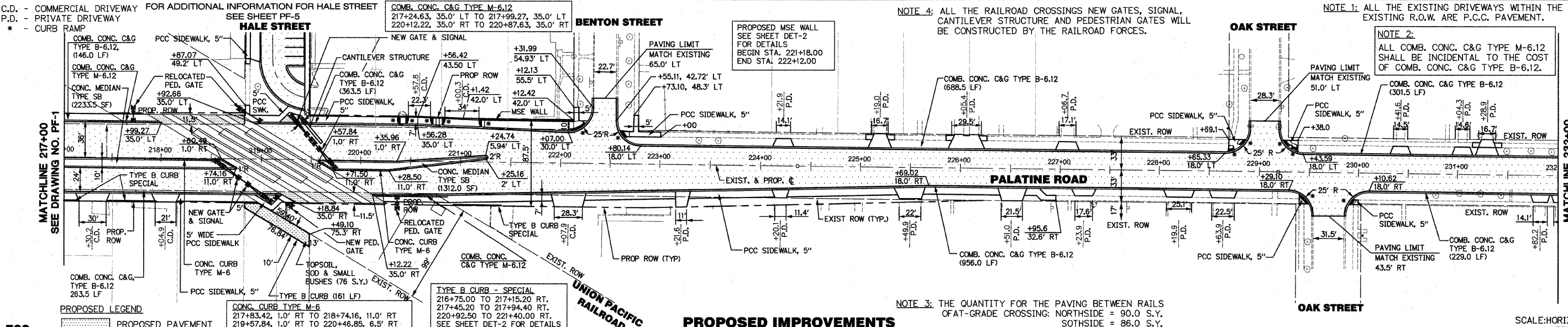
ILLINOIS DEPARTMENT OF TRANSPORTATION
 VILLAGE OF PALATINE
 PALATINE ROAD & PLUM GROVE ROAD RECONSTRUCTION
 SMITH STREET TO US 14 (NORTHWEST HIGHWAY)
 SUMMARY OF QUANTITIES
 SCALE: VERT. _____
 HORIZ. _____
 DATE: OCTOBER 19, 2009
 DRAWN BY: BA
 CHECKED BY: _____

PLAN
 SURVEYED
 GRADES CHECKED
 ALIGNMENT CHECKED
 RT. OF WAY CHECKED
 NOTE BOOK NO. DATE
 FILE NAME

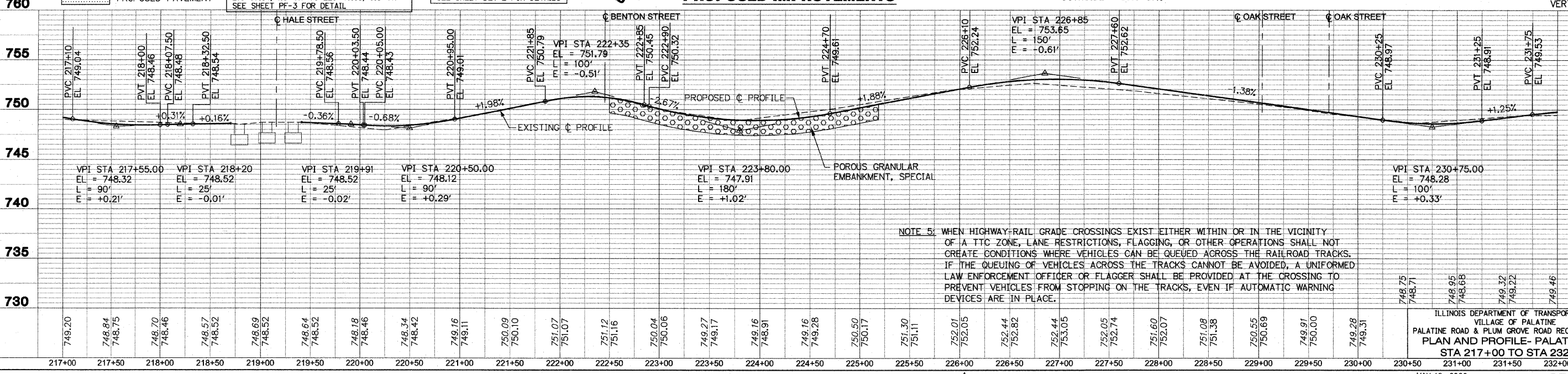


EXISTING CONDITIONS

PROFILE
 SURVEYED
 GRADES CHECKED
 STATIONING ADJUSTED
 NOTE BOOK NO. DATE
 FILE NAME



PROPOSED IMPROVEMENTS



NOTE 5: WHEN HIGHWAY-RAIL GRADE CROSSINGS EXIST EITHER WITHIN OR IN THE VICINITY OF A TTC ZONE, LANE RESTRICTIONS, FLAGGING, OR OTHER OPERATIONS SHALL NOT CREATE CONDITIONS WHERE VEHICLES CAN BE QUEUED ACROSS THE RAILROAD TRACKS. IF THE QUEUING OF VEHICLES ACROSS THE TRACKS CANNOT BE AVOIDED, A UNIFORMED LAW ENFORCEMENT OFFICER OR FLAGGER SHALL BE PROVIDED AT THE CROSSING TO PREVENT VEHICLES FROM STOPPING ON THE TRACKS, EVEN IF AUTOMATIC WARNING DEVICES ARE IN PLACE.

Revised 4/3-10

FOR ADDITIONAL INFORMATION FOR PALATINE RD SEE DRAWING NO. PF-1

FOR ADDITIONAL INFORMATION FOR PALATINE RD SEE DRAWING NO. PF-1

FOR ADDITIONAL INFORMATION FOR PALATINE RD SEE DRAWING NO. PF-1

FOR ADDITIONAL INFORMATION FOR PALATINE RD SEE DRAWING NO. PF-1

NOTE 2: ALL THE RAILROAD CROSSING NEW GATES, SIGNAL, CANTILEVER STRUCTURE AND PEDESTRIAN GATES WILL BE CONSTRUCTED BY THE RAILROAD FORCES.

NOTE 3: ALL COMB. CONC. C&G TYPE M-6.12 SHALL BE INCIDENTAL TO THE COST OF COMB. CONC. C&G TYPE B-6.12.

NOTE 4: THE QUANTITY FOR THE PAVING BETWEEN RAILS OF AT-GRADE CROSSING: EASTSIDE = 67.0 S.Y. WESTSIDE = 87.0 S.Y.

NOTE 5: WHEN HIGHWAY-RAIL GRADE CROSSINGS EXIST EITHER WITHIN OR IN THE VICINITY OF A TTC ZONE, LANE RESTRICTIONS, FLAGGING, OR OTHER OPERATIONS SHALL NOT CREATE CONDITIONS WHERE VEHICLES CAN BE QUEUED ACROSS THE RAILROAD TRACKS. IF THE QUEUING OF VEHICLES ACROSS THE TRACKS CANNOT BE AVOIDED, A UNIFORMED LAW ENFORCEMENT OFFICER OR FLAGGER SHALL BE PROVIDED AT THE CROSSING TO PREVENT VEHICLES FROM STOPPING ON THE TRACKS, EVEN IF AUTOMATIC WARNING DEVICES ARE IN PLACE.

PLAN

DATE	
BY	
REVISIONS	
NO.	
DESCRIPTION	
DATE	
BY	
NO.	
DESCRIPTION	
DATE	
BY	
NO.	
DESCRIPTION	

PROFILE

DATE	
BY	
REVISIONS	
NO.	
DESCRIPTION	
DATE	
BY	
NO.	
DESCRIPTION	
DATE	
BY	
NO.	
DESCRIPTION	

