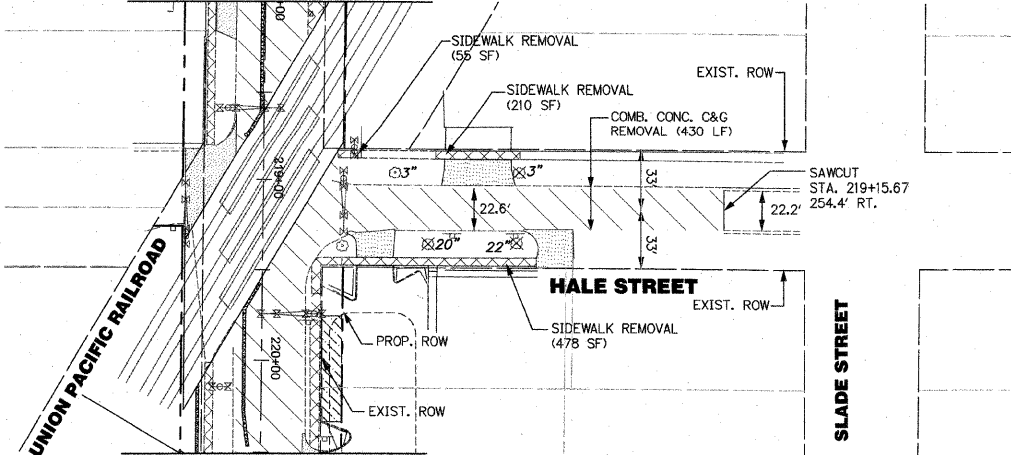


PALATINE ROAD
FOR ADDITIONAL INFORMATION FOR PALATINE RD,
SEE DRAWING NO. PF-2

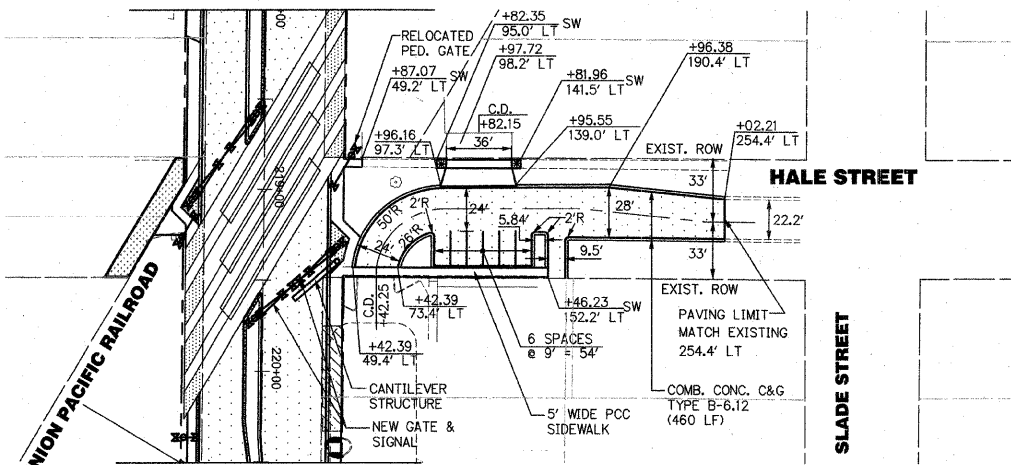
SCALE: 1"=50'



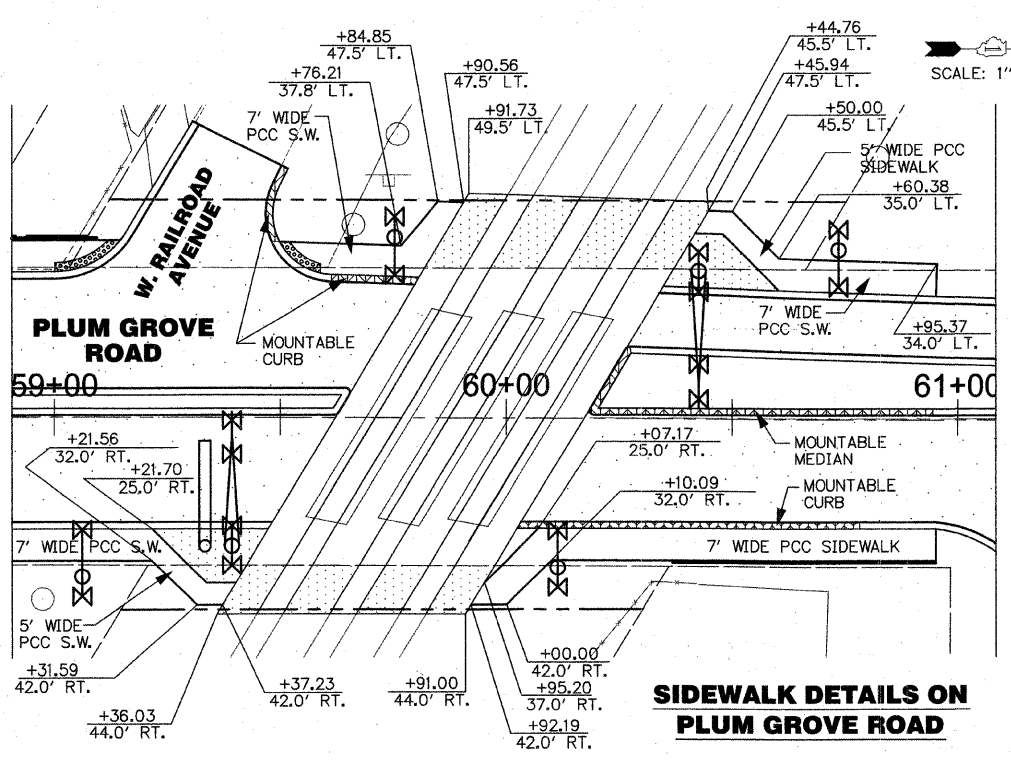
HALE STREET - EXISTING CONDITIONS

PALATINE ROAD
FOR ADDITIONAL INFORMATION FOR PALATINE RD,
SEE DRAWING NO. PF-2

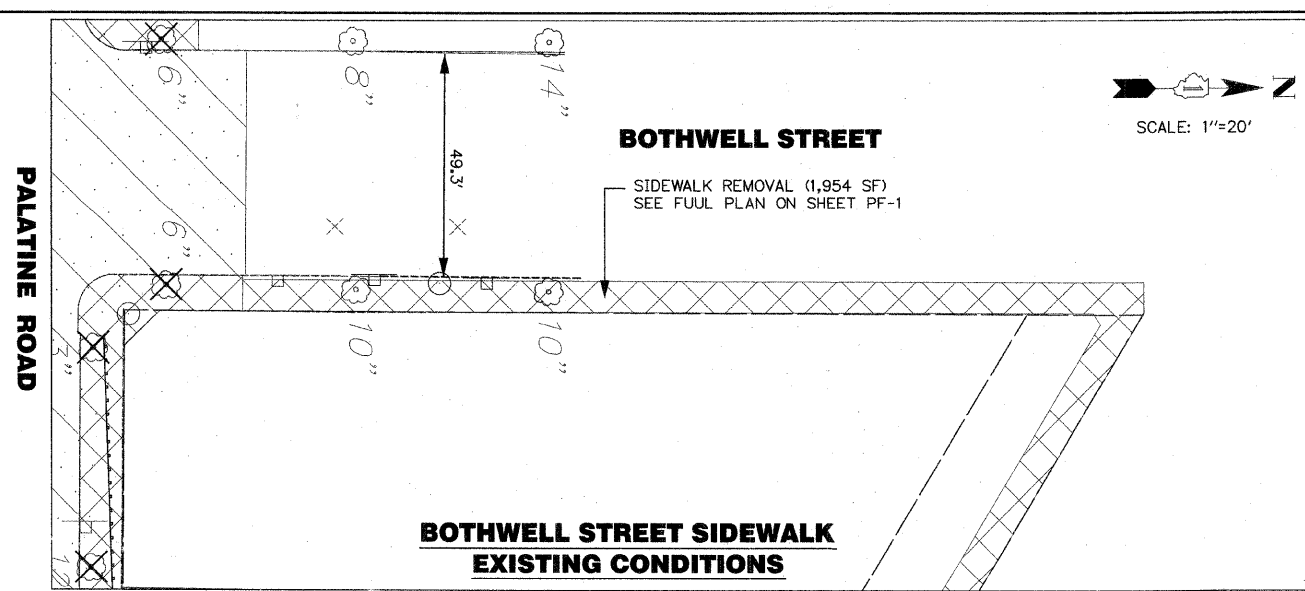
SCALE: 1"=50'



HALE STREET - PROPOSED IMPROVEMENTS

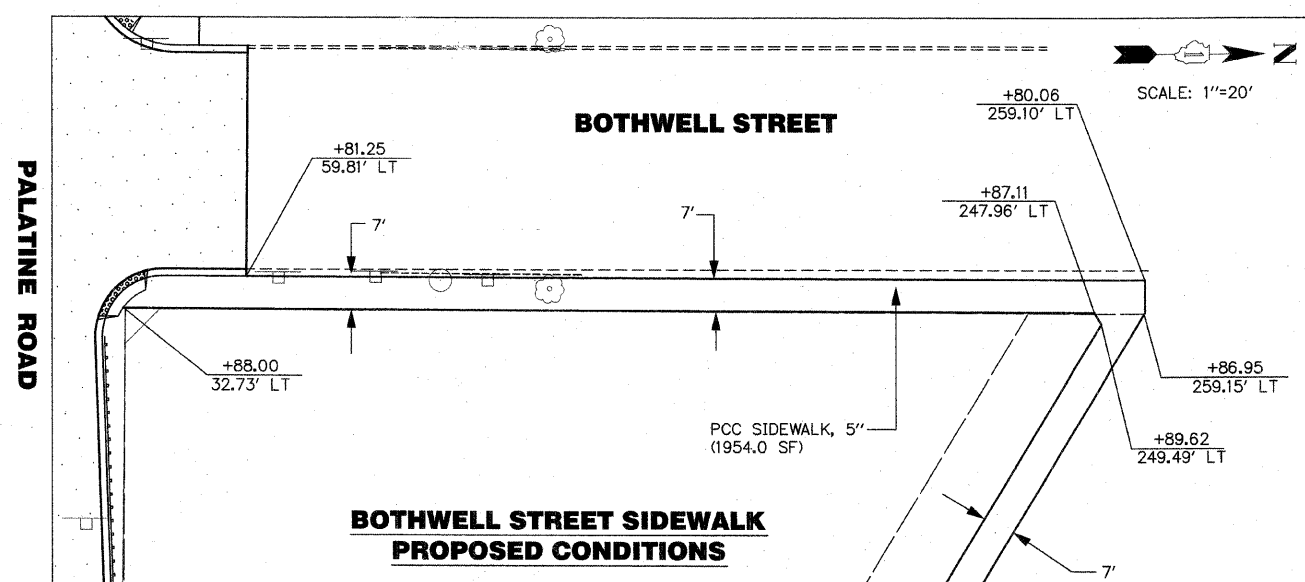


SIDWALK DETAILS ON PLUM GROVE ROAD



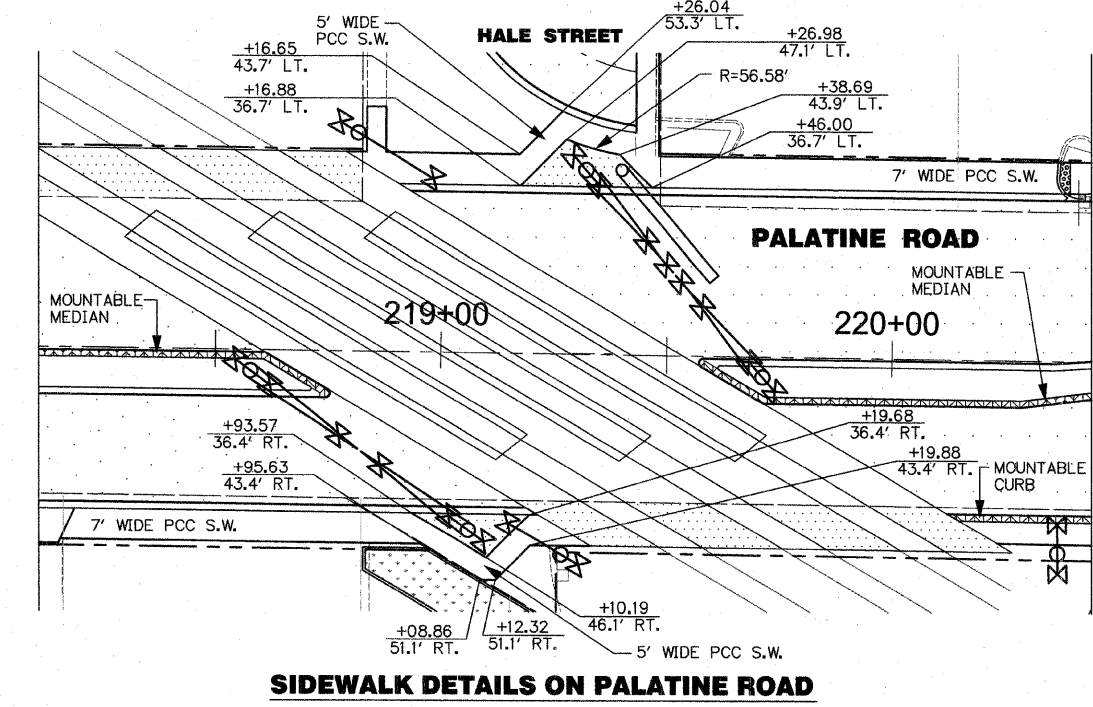
BOTHWELL STREET SIDEWALK EXISTING CONDITIONS

SCALE: 1"=20'



BOTHWELL STREET SIDEWALK PROPOSED CONDITIONS

SCALE: 1"=20'



SIDWALK DETAILS ON PALATINE ROAD

SCALE: 1"=20'

F.A.P. RTE. 1285	SECTION 02-00075-00-PV	COUNTY COOK	TOTAL SHEETS 161	SHEET NO. 29
STA. _____		TO STA. _____		
FED. ROAD DIST. NO. ILLINOIS FED. AID PROJECT				
CONTRACT NO. 63083				

- EXISTING LEGEND**
- PCC SIDEWALK REMOVAL
 - DRIVEWAY REMOVAL
 - PAVEMENT REMOVAL
 - 20" TREE REMOVAL

- PROPOSED LEGEND**
- PROPOSED PAVEMENT
 - C.D. - COMMERCIAL DRIVEWAY
 - P.D. - PRIVATE DRIVEWAY
 - * - CURB RAMP

REVISIONS	
NAME	DATE

ILLINOIS DEPARTMENT OF TRANSPORTATION
VILLAGE OF PALATINE
PALATINE ROAD & PLUM GROVE ROAD RECONSTRUCTION
SMITH STREET TO US 14 (NORTHWEST HIGHWAY)

PLAN - HALE STREET & SIDEWALK DETAILS

SCALE: VERT. _____
HORIZ. _____
DATE: OCTOBER 19, 2009

DRAWN BY BA
CHECKED BY _____