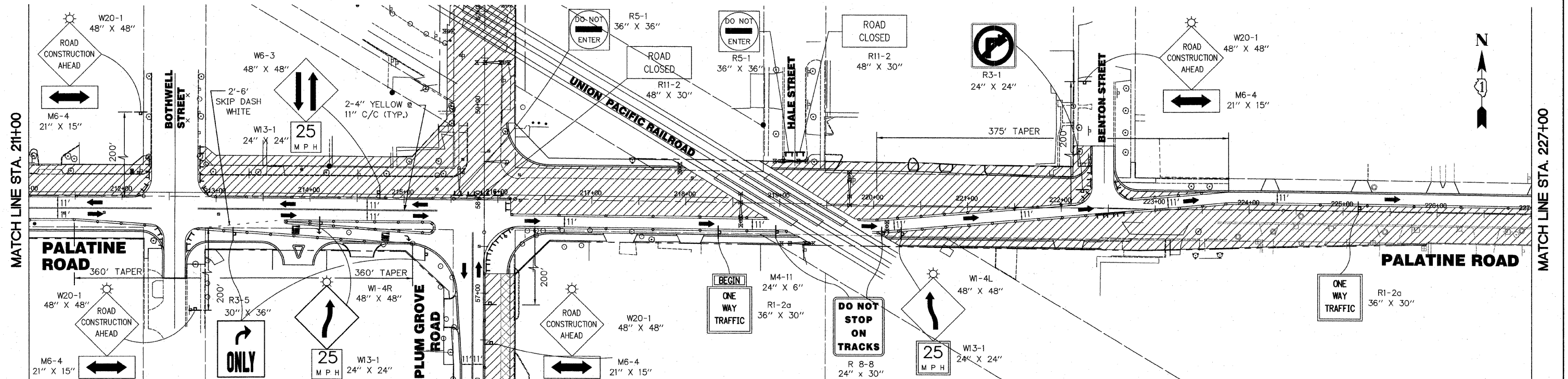
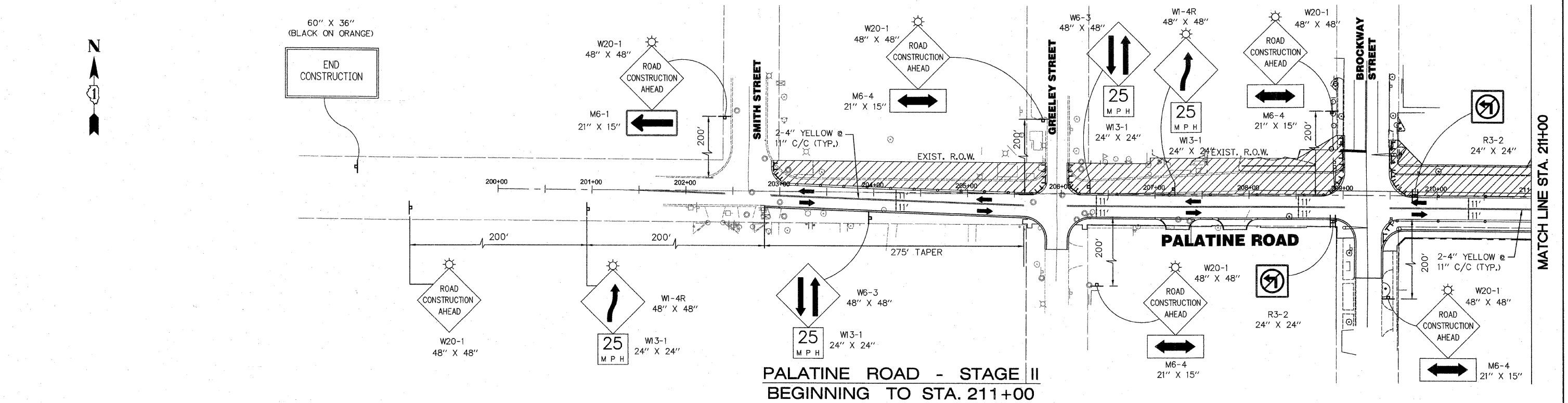


1. THE COST OF TEMPORARY PAVEMENT MARKING FOR STAGE I CONSTRUCTION IS INCLUDED IN THE COST OF "TRAFFIC CONTROL & PROTECTION (SPECIAL)".
2. PLACE ONE-WAY SIGN (R6-2) EASTBOUND AT ALL DRIVEWAYS AND CROSS ROADS EAST OF PLUM GROVE ROAD AND KERWOOD AVENUE.

F.A.P. SECTION	COUNTY	TOTAL SHEETS	SHEET NO.
1285 02-00075-00-PV	COOK	161	34
STA.	TO STA.		
FED. ROAD DIST. NO. - ILLINOIS FED. AID PROJECT			
CONTRACT NO. 63083			



**PALATINE ROAD - STAGE II
STA. 211+00 TO STA. 227+00**

- LEGEND**
- ⊥ TEMPORARY TRAFFIC ADVISORY SIGN
 - ▨ WORK AREA
 - TYPE II BARRICADE WITH MONO-DIRECTIONAL STEADY BURN LIGHTS AT 50' CENTERS, 25' IN TAPERS AND 10' IN RADII (TYP.) SEE NOTE 1.
 - ⊥ TYPE III BARRICADE WITH LIGHT
 - TRAFFIC LANE

REVISIONS	
NAME	DATE

ILLINOIS DEPARTMENT OF TRANSPORTATION
 VILLAGE OF PALATINE
 PALATINE ROAD & PLUM GROVE ROAD RECONSTRUCTION
 SMITH STREET TO US 14 (NORTHWEST HIGHWAY)
**PALATINE ROAD
 MAINTENANCE OF TRAFFIC
 STAGE II**
 SCALE: VERT. N.T.S. DRAWN BY --
 HORIZ. 1" = 50' CHECKED BY BA
 DATE OCTOBER 19, 2009