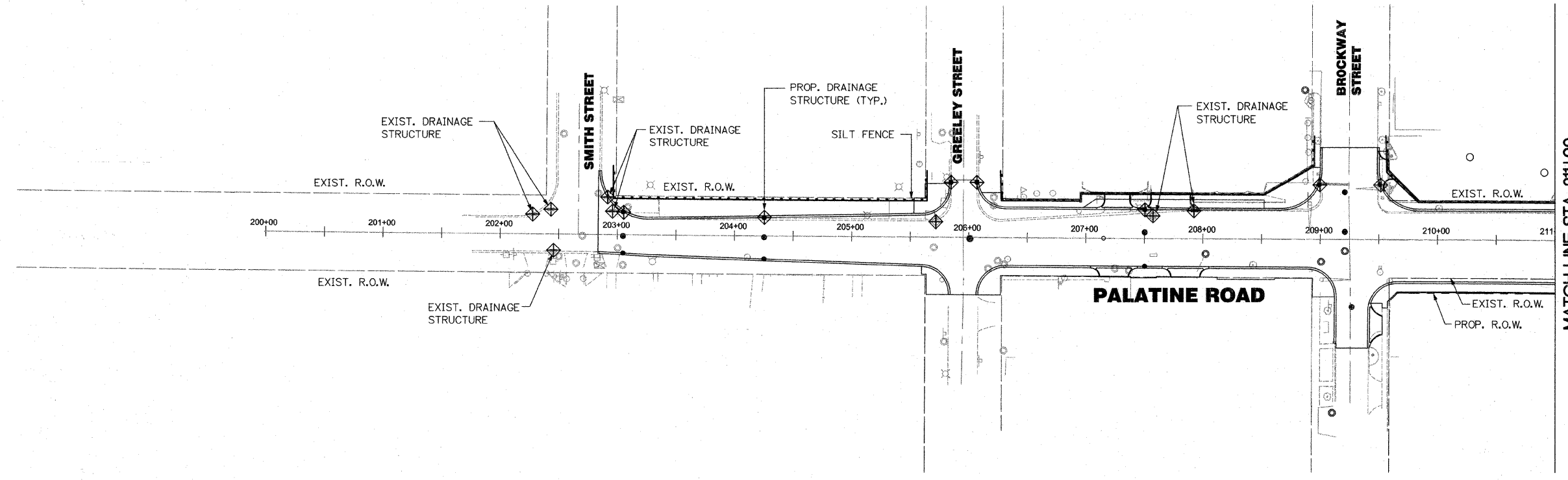
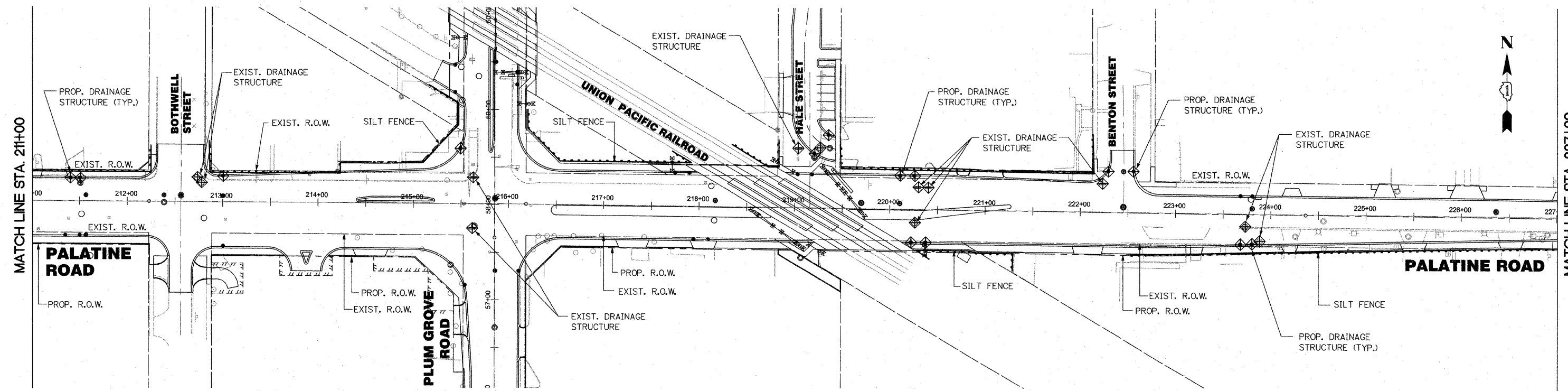


F.A.P. RTE.	SECTION	COUNTY	TOTAL SHEETS	SHEET NO.
1285	02-00075-00-PV	COOK	161	42
STA. _____		TO STA. _____		
FED. ROAD DIST. NO. _____		ILLINOIS FED. AID PROJECT		
CONTRACT NO. 63083				



MATCH LINE STA. 211+00



MATCH LINE STA. 211+00

MATCH LINE STA. 227+00

**NOTE:**

QUANTITIES HAVE BEEN ESTIMATED HEREIN FOR TEMPORARY SEEDING CLASS 7 WHICH WILL BE USED ONLY WHEN DIRECTED BY ENGINEER IN ACCORDANCE WITH ARTICLE 280.04 (F) OF THE STANDARD SPECIFICATIONS, AND EROSION CONTROL BLANKET WILL BE USED TO PROTECT THE SEEDDED AREAS.

- SEDIMENT CONTROL, SILT FENCE
- INLET FILTERS

REVISIONS	
NAME	DATE

ILLINOIS DEPARTMENT OF TRANSPORTATION  
 VILLAGE OF PALATINE  
 PALATINE ROAD & PLUM GROVE ROAD RECONSTRUCTION  
 SMITH STREET TO US 14 (NORTHWEST HIGHWAY)  
**PALATINE ROAD**  
**TEMPORARY EROSION CONTROL PLAN**  
**STAGE II**  
 SCALE: VERT. N.T.S.      DRAWN BY BA  
 HORIZ. 1" = 50'      CHECKED BY RCH  
 DATE: OCTOBER 19, 2009