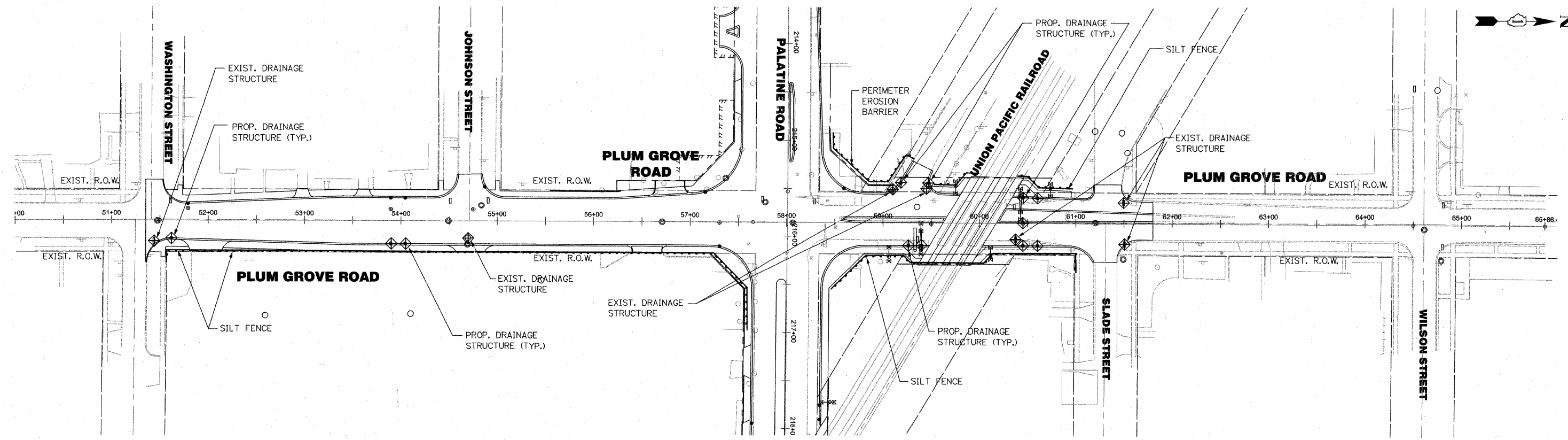
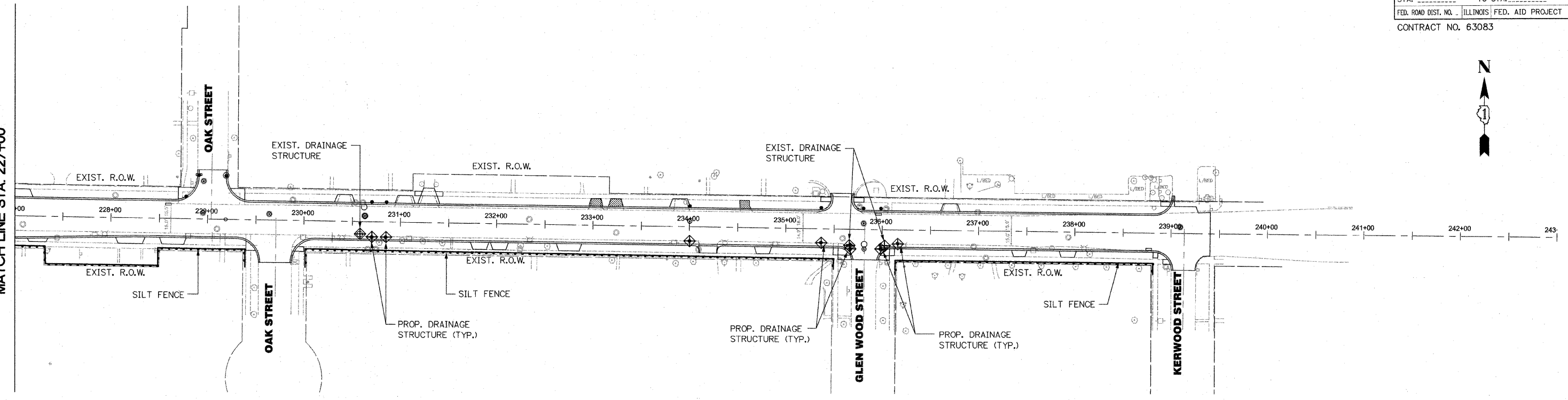


F.A.P. RTE.	SECTION	COUNTY	TOTAL SHEETS	SHEET NO.
1285	02-00075-00-PV	COOK	161	43
STA. _____		TO STA. _____		
FED. ROAD DIST. NO. _____		ILLINOIS FED. AID PROJECT		
CONTRACT NO. 63083				

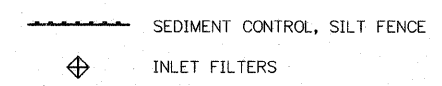


MATCH LINE STA. 227+00



NOTE:

QUANTITIES HAVE BEEN ESTIMATED HEREIN FOR TEMPORARY SEEDING CLASS 7 WHICH WILL BE USED ONLY WHEN DIRECTED BY ENGINEER IN ACCORDANCE WITH ARTICLE 280.04 (F) OF THE STANDARD SPECIFICATIONS, AND EROSION CONTROL BLANKET WILL BE USED TO PROTECT ALL THE SEEDED AREAS.



REVISIONS	
NAME	DATE

ILLINOIS DEPARTMENT OF TRANSPORTATION
 VILLAGE OF PALATINE
 PALATINE ROAD & PLUM GROVE ROAD RECONSTRUCTION
 SMITH STREET TO US 14 (NORTHWEST HIGHWAY)
**PALATINE ROAD & PLUM GROVE ROAD
 TEMPORARY EROSION CONTROL PLAN
 STAGE II**
 SCALE: VERT. N.T.S.
 HORIZ. 1" = 50'
 DATE OCTOBER 19, 2009
 DRAWN BY BA
 CHECKED BY RCH