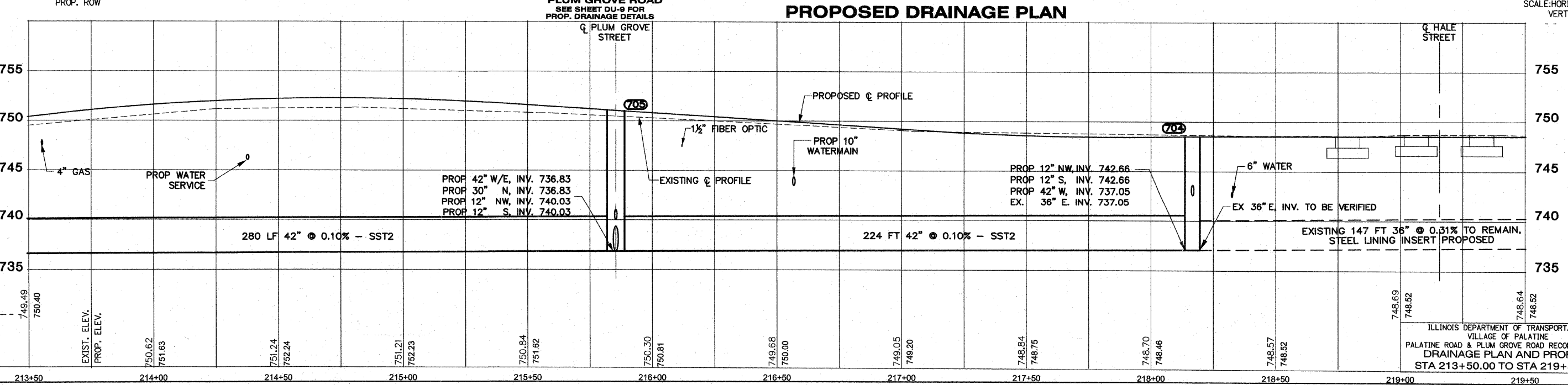
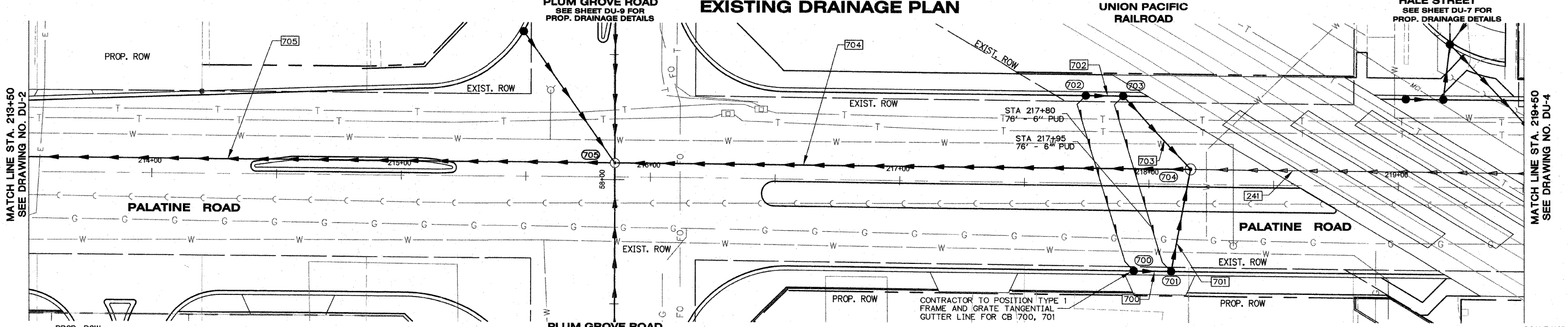
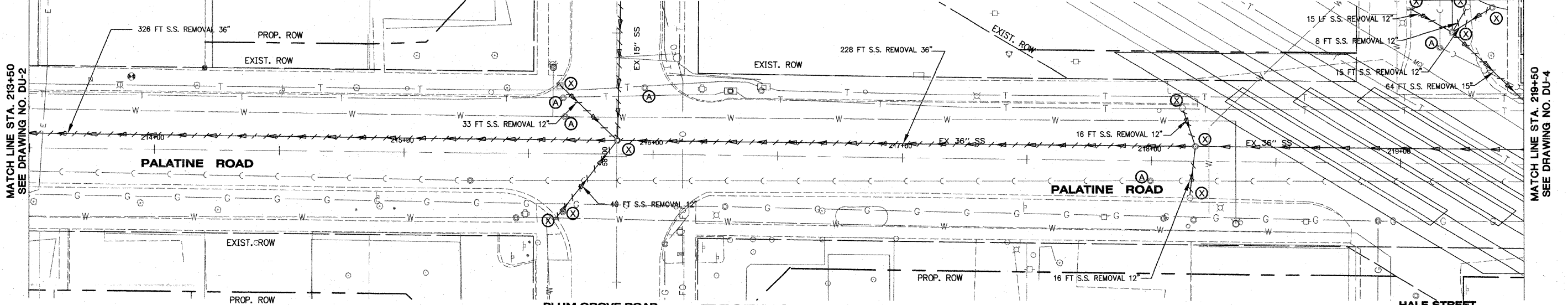


**LEGEND**

- EXISTING STORM SEWER
- STORM SEWER REMOVAL
- PROPOSED STORM SEWER
- PROPOSED MANHOLE
- PROPOSED CATCH BASIN
- REMOVE

- (A) ADJUST
- (AB) ABANDON
- (XX) PROPOSED STORM SEWER (SEE DU-10 FOR SCHEDULE)
- (XX) PROPOSED DRAINAGE STRUCTURE (SEE DU-10 FOR SCHEDULE)

CONTRACT NO. 63083	F.A.P. RTE. 1285	SECTION 02-00075-00-PV	COUNTY COOK	TOTAL SHEETS 161	SHEET NO. 46
STA. _____		TO STA. _____			
FED. ROAD DIST. NO. _____ ILLINOIS FED. AID PROJECT					



DATE: \_\_\_\_\_ BY: \_\_\_\_\_  
 SURVEYED: \_\_\_\_\_  
 PLAN: \_\_\_\_\_  
 NOTE BOOK: \_\_\_\_\_  
 CHECKED: \_\_\_\_\_  
 FILE NO.: \_\_\_\_\_

DATE: \_\_\_\_\_ BY: \_\_\_\_\_  
 SURVEYED: \_\_\_\_\_  
 PROFILE: \_\_\_\_\_  
 NOTE BOOK: \_\_\_\_\_  
 CHECKED: \_\_\_\_\_  
 FILE NO.: \_\_\_\_\_

SCALE: HORIZ: 1"=20'  
 VERT: 1"=5'

ILLINOIS DEPARTMENT OF TRANSPORTATION  
 VILLAGE OF PALATINE  
 PALATINE ROAD & PLUM GROVE ROAD RECONSTRUCTION  
 DRAINAGE PLAN AND PROFILE  
 STA 213+50.00 TO STA 219+50.00