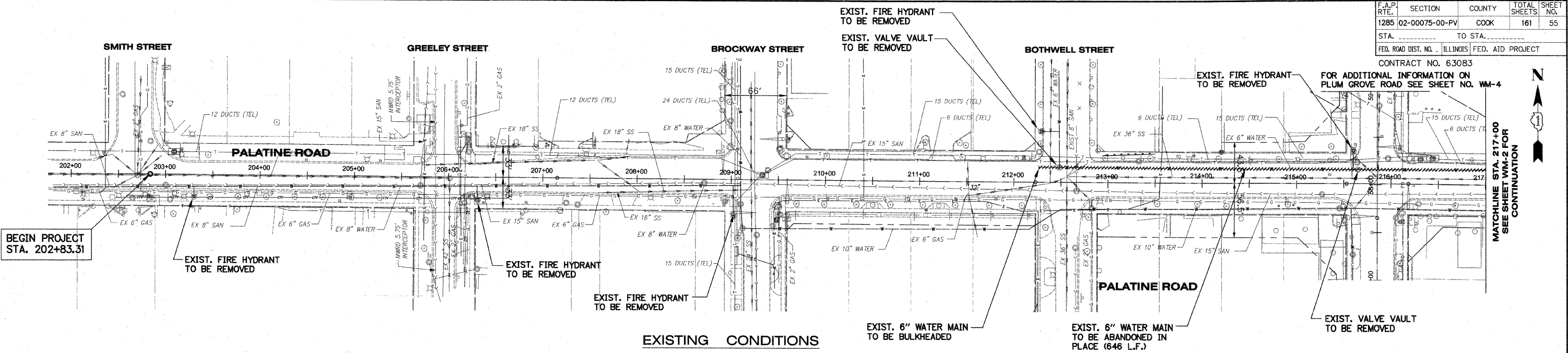
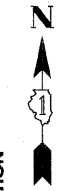


F.A.P. RTE.	SECTION	COUNTY	TOTAL SHEETS	SHEET NO.
1285	02-00075-00-PV	COOK	161	55
STA.	TO STA.			
FED. ROAD DIST. NO.	ILLINOIS	FED. AID PROJECT		

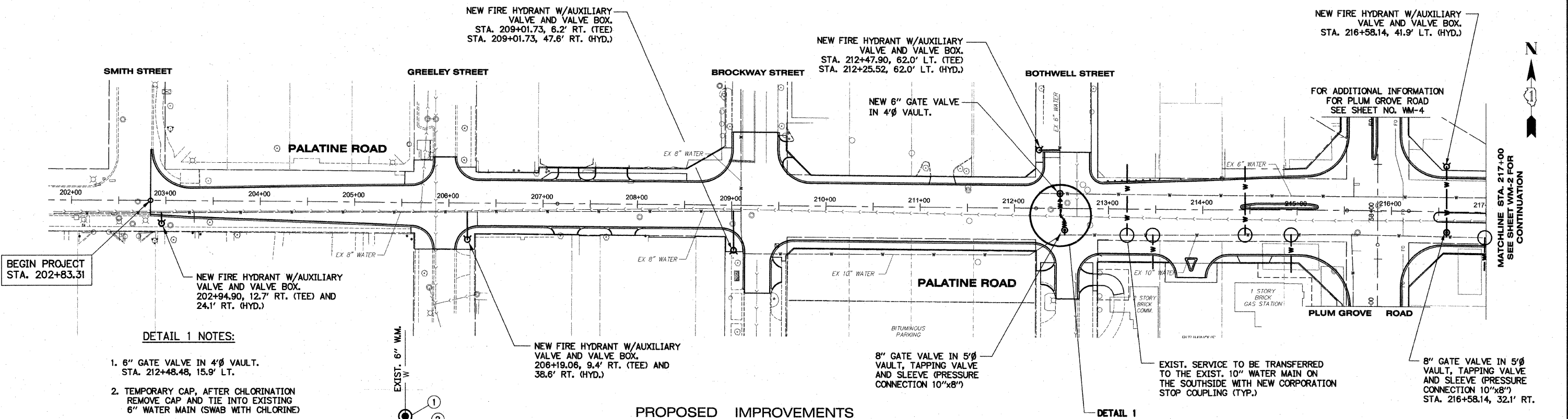
CONTRACT NO. 63083

FOR ADDITIONAL INFORMATION ON PLUM GROVE ROAD SEE SHEET NO. WM-4

MATCHLINE STA. 217+00 FOR SEE SHEET WM-2 FOR CONTINUATION



EXISTING CONDITIONS

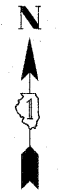


PROPOSED IMPROVEMENTS

BEGIN PROJECT STA. 202+83.31

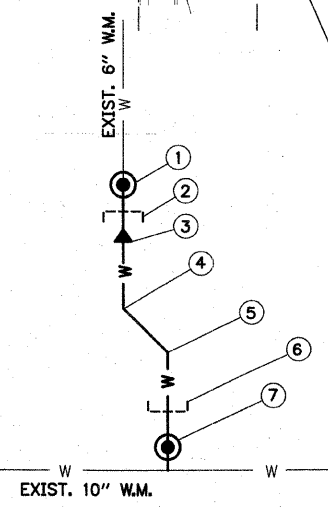
BEGIN PROJECT STA. 202+83.31

MATCHLINE STA. 217+00 FOR SEE SHEET WM-2 FOR CONTINUATION



DETAIL 1 NOTES:

- 6" GATE VALVE IN 4' VAULT. STA. 212+48.48, 15.9' LT.
- TEMPORARY CAP. AFTER CHLORINATION REMOVE CAP AND TIE INTO EXISTING 6" WATER MAIN (SWAB WITH CHLORINE)
- 8" X 6" REDUCER
- 8" x 45° BEND STA. 212+48.70, 7.9' RT.
- 8" x 45° BEND STA. 212+53.14, 12.3' RT.
- TEMPORARY CAP. AFTER CHLORINATION REMOVE CAP AND TIE INTO EXISTING 6" WATER MAIN (SWAB WITH CHLORINE)
- 8" GATE VALVE IN 5' VAULT, TAPPING VALVE & SLEEVE (10"x8" PRESSURE CONNECTION) STA. 212+53.14, 27.9' RT.



DETAIL 1

NOTE: ALL THE DUCTILE IRON WATER MAIN PIPE SHALL BE CLASS 52. SEE THE VILLAGE OF PALATINE'S WATER MAIN DETAILS SHEET (WM-5) FOR THE FIRE HYDRANT DETAILS AND MANUFACTURER.

40 L.F. OF 8" D.I.P. WATER MAIN
10 L.F. OF 6" D.I.P. WATER MAIN

REVISIONS	
NAME	DATE

ILLINOIS DEPARTMENT OF TRANSPORTATION
VILLAGE OF PALATINE
PALATINE ROAD & PLUM GROVE ROAD RECONSTRUCTION
SMITH STREET TO US 14 (NORTHWEST HIGHWAY)
WATER MAIN PLAN - PALATINE ROAD
STA. 202+83.31 TO STA. 217+00
SCALE: VERT. DRAWN BY
 HORIZ. DATE CHECKED BY
 DATE OCTOBER 19, 2009