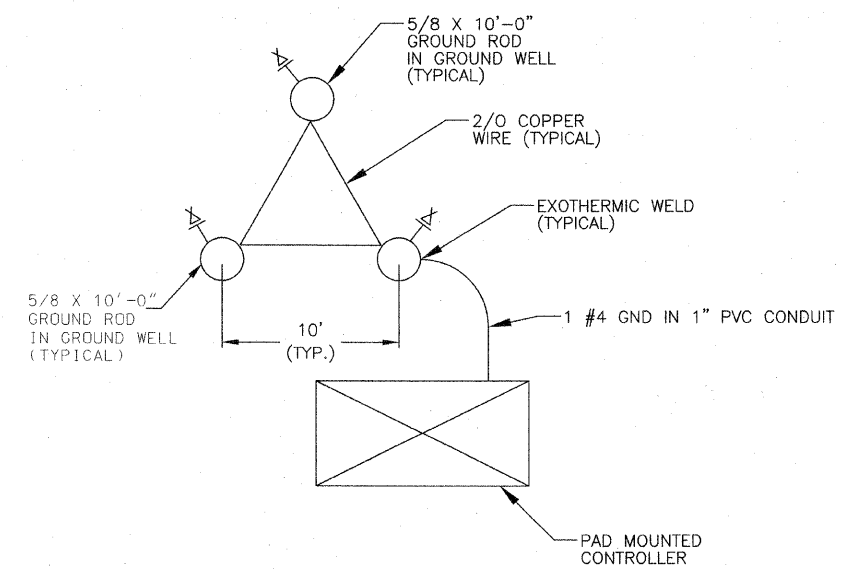


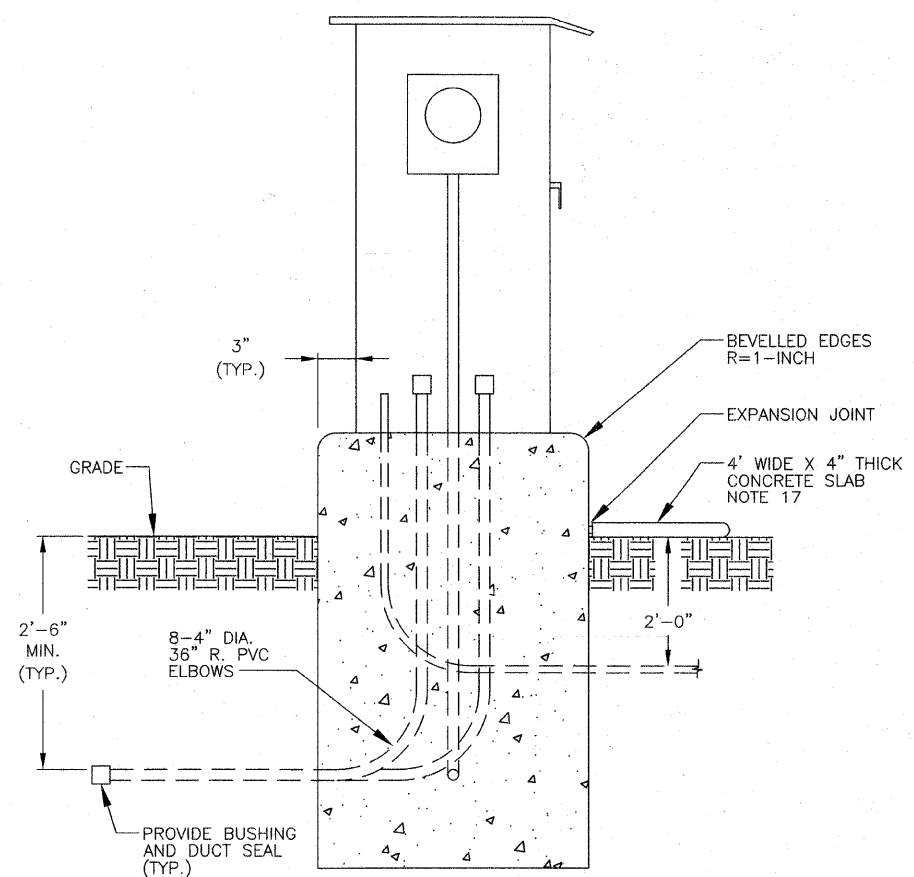
GROUND WELL DETAIL



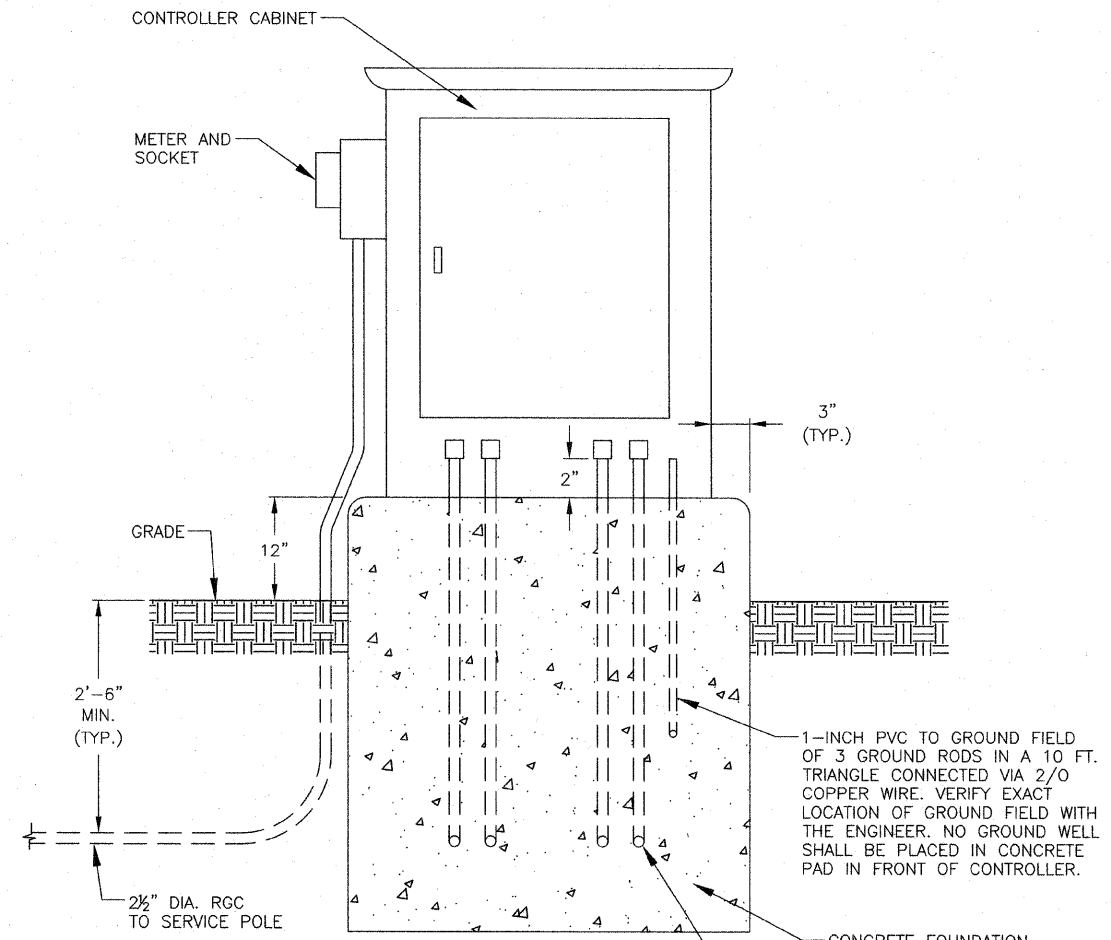
GROUND FIELD DETAIL

NOTES:

- COORDINATE PLACEMENT OF RACEWAYS WITH CONTROLLER MANUFACTURER TO ASSURE DOOR LATCH DOES NOT INTERFERE WITH CABLES OR OTHER DEVICES.
- THE CONTRACTOR SHALL PROVIDE A GROUND FIELD AT EACH CABINET LOCATION. THE GROUND RODS, ANCHOR BOLTS, AND REINFORCEMENT STEEL SHALL ALL BE INTERCONNECTED.
- THE CONTRACTOR SHALL VERIFY EXACT LOCATION OF GROUND FIELD WITH THE ENGINEER.
- ALL SCREWS AND HARDWARE SHALL BE PLATED, GALVANIZED, OR MADE OF BRASS.
- NAME PLATE SHALL HAVE ENGRAVED 0.75 INCH HIGH LETTERS FILLED IN BLACK: "ROADWAY LIGHTING CONTROLLER, VILLAGE OF PALATINE".
- ONE INCH THICK POLYISOCYANURATE INSULATION SHALL BE INSTALLED AND PERMANENTLY CEMENTED ON ALL SIDES OF THE CABINET AND DOORS.
- ALL DEVICES SHALL BE FRONT REMOVABLE.
- ALL LUGS SHALL BE OF COPPER SCREWS AND CONNECTORS, SPRING HELD.
- ALL CONTROL WIRING SHALL BE 600V MACHINE TOOL WIRE TYPE MTW.
- ALL POWER WIRING SHALL BE 600V TYPE RHH/RHW.
- CIRCUIT BREAKERS, CONTACTORS, AND OTHER COMPONENTS SHALL BE PANEL MOUNTED ON 0.125 INCH THICK GLASTIC INSULATION BACK PANEL.
- THE COMPLETED CONTROLLER SHALL BE U.L. LISTED AS AN INDUSTRIAL CONTROL PANEL UNDER UL508.
- ALL 120 VOLT SYSTEM AND ALL CONTROL WIRING SHALL BE #12AWG STRANDED UNLESS OTHERWISE INDICATED.
- ALL WIRING SHALL BE NEATLY DRESSED AND SUPPORTED.
- FOR LIGHTING CONTROLLER WIRING DIAGRAM, SEE DRAWING RL-9.
- SIZE OF CONCRETE FOUNDATION AS REQUIRED TO SUPPORT CONTROL CABINET.
- LENGTH OF CONCRETE SLAB SHOULD MATCH LENGTH OF CONCRETE FOUNDATION.



LEFT SIDE ELEVATION



FRONT ELEVATION

REVISIONS	
NAME	DATE

ILLINOIS DEPARTMENT OF TRANSPORTATION
VILLAGE OF PALATINE
PALATINE ROAD & PLUM GROVE ROAD RECONSTRUCTION
SMITH STREET TO US 14 (NORTHWEST HIGHWAY)
**TYPICAL LIGHTING CONTROLLER
INSTALLATION DETAILS**
SCALE: VERT. _____
HORIZ. N.T.S.
DATE: OCTOBER 19, 2009
DRAWN BY: CJM
CHECKED BY: KMY