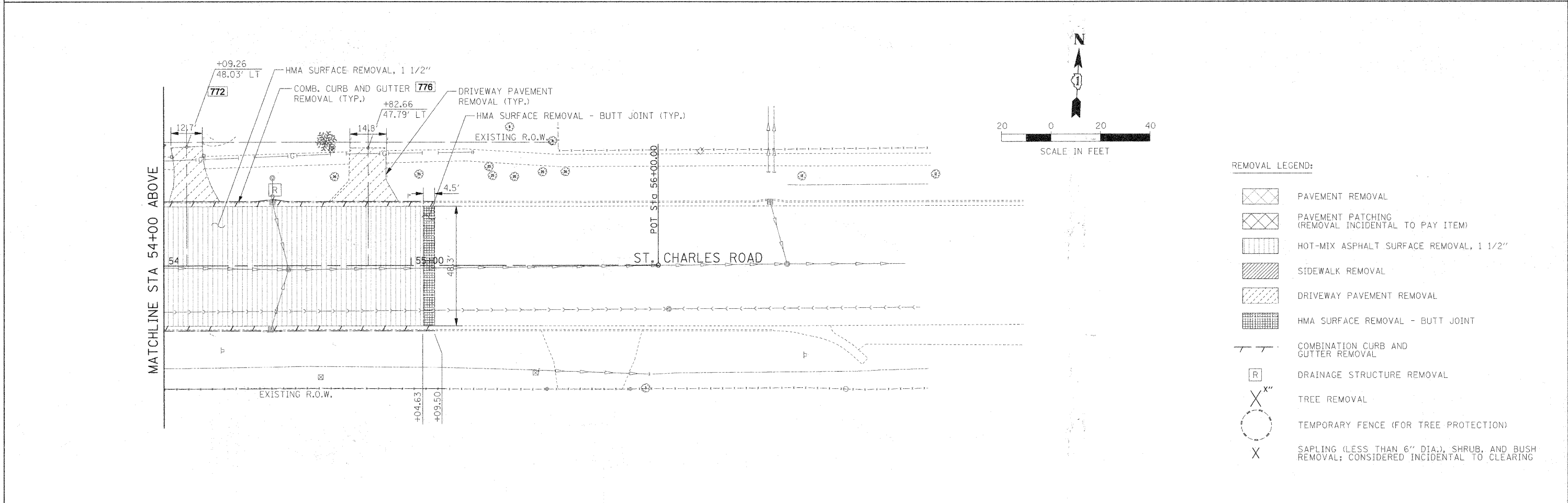
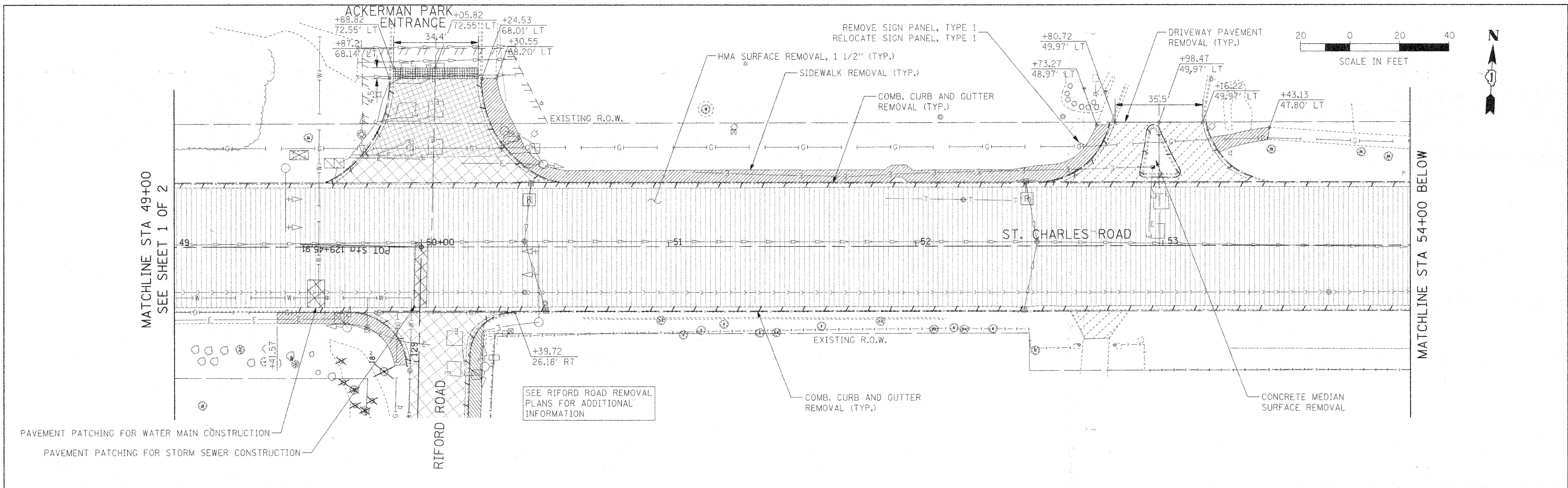


PLAN	SURVEYED	DATE
	PLOTTED	
	CHECKED	
	BY	
	NO. OF WAY CHECKED	
	CADD FILE NAME	
	NO.	

PROFILE	SURVEYED	DATE
	PLOTTED	
	CHECKED	
	BY	
	NO. OF WAY CHECKED	
	STRUCTURE NOTATIONS CHECKED	
	NO.	



REMOVAL LEGEND:

	PAVEMENT REMOVAL
	PAVEMENT PATCHING (REMOVAL INCIDENTAL TO PAY ITEM)
	HOT-MIX ASPHALT SURFACE REMOVAL, 1 1/2"
	SIDEWALK REMOVAL
	DRIVEWAY PAVEMENT REMOVAL
	HMA SURFACE REMOVAL - BUTT JOINT
	COMBINATION CURB AND GUTTER REMOVAL
	DRAINAGE STRUCTURE REMOVAL
	TREE REMOVAL
	TEMPORARY FENCE (FOR TREE PROTECTION)
	SAPLING (LESS THAN 6" DIA.), SHRUB, AND BUSH REMOVAL; CONSIDERED INCIDENTAL TO CLEARING

FILE NAME =	USER NAME = #USER#	DESIGNED = JAB	REVISED =	STATE OF ILLINOIS DEPARTMENT OF TRANSPORTATION	ST. CHARLES ROAD REMOVAL PLAN	F.A.U. RTE.	SECTION	COUNTY	TOTAL SHEETS	
#FILEL#		DRAWN = JAB	REVISED =			2135	05-00068-00-FP	D:\PAGE	141	32
		CHECKED =	REVISED =			RIFORD ROAD RECONSTRUCTION		CONTRACT NO. 63092		
		DATE = 12/01/2009	REVISED =	SCALE: 1"=20'	SHEET NO. 2 OF 2 SHEETS	STA. 49+00.00 TO STA. 55+00.00	FED. ROAD DIST. NO. 1 [ILLINOIS] FED. AID PROJECT			