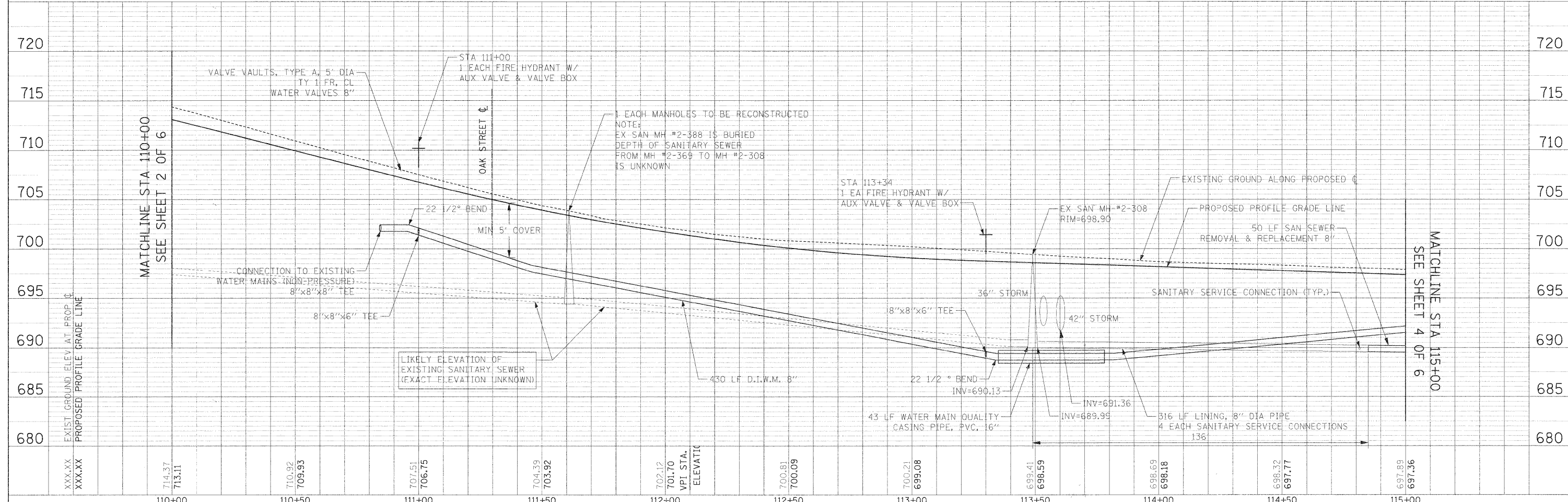
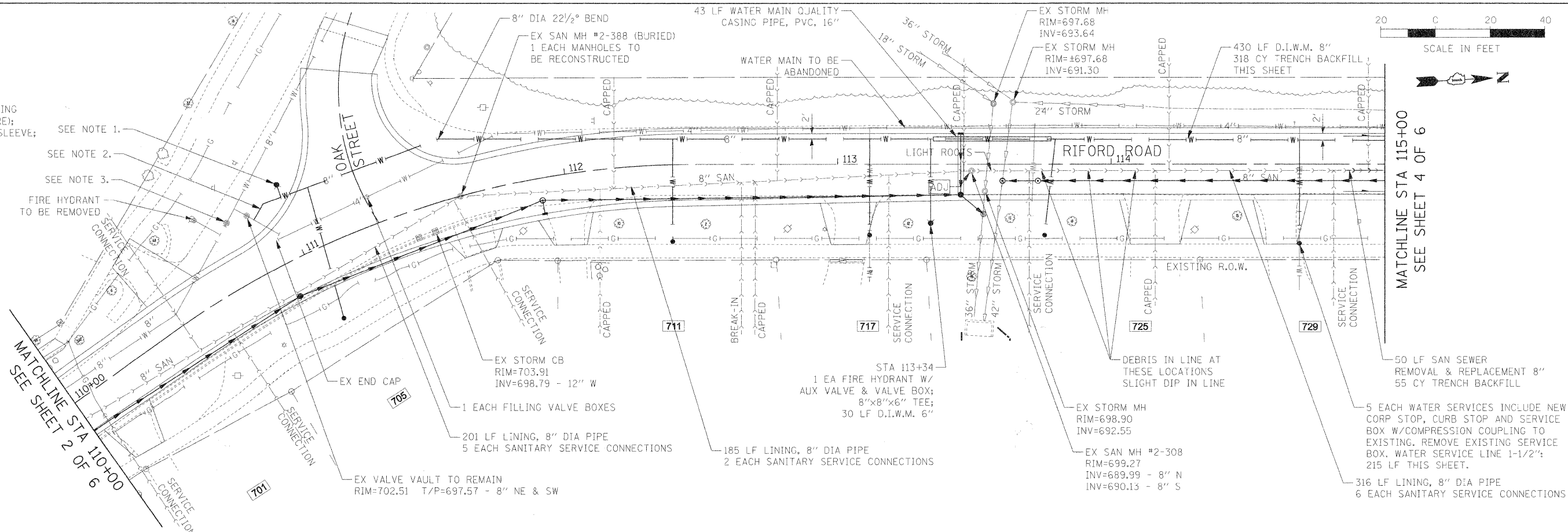
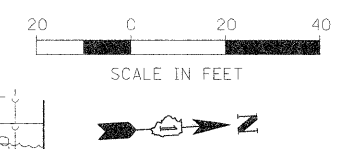


NOTE 1:
 STA 111+00
 1 EA FIRE HYDRANT W/
 AUX VALVE & VALVE BOX;
 8"x8"x6" TEE;
 5 LF D.I.W.M. 6"

NOTE 2:
 1 EA CONNECTION TO EXISTING
 WATER MAINS (NON-PRESSURE);
 8"x8"x8" TEE; 8" CUT-IN SLEEVE;
 8" DIA 45° BEND

NOTE 3:
 EX VALVE VAULT
 RIM=703.29
 T/P=698.29 - 8" NW & SE



DATE	
BY	
PLAN	
NO.	
NO.	
NO.	
NO.	
NO.	

DATE	
BY	
PROFILE	
NO.	
NO.	
NO.	
NO.	
NO.	

FILE NAME =	USER NAME = #USER#	DESIGNED - MK	REVISED -	F.A.U. R.T.E. 2115	SECTION 05-00068-00+P	COUNTY DUPAGE	TOTAL SHEETS 141	SHEET NO. 64	
#FILE#	PLOT SCALE = #SCALE#	DRAWN - DC	REVISI	RIFORD ROAD RECONSTRUCTION		CONTRACT NO. 63092			
	PLOT DATE = #DATE#	CHECKED - RLP	REVISI	RIFORD ROAD RECONSTRUCTION		CONTRACT NO. 63092			
		DATE - 12/01/2009	REVISI	FED. ROAD DIST. NO. 1 ILLINOIS		FED. AID PROJECT			
STATE OF ILLINOIS DEPARTMENT OF TRANSPORTATION				RIFORD ROAD UTILITY PLAN AND PROFILE				SCALE: 1"=20'	
				SHEET NO. 3 OF 6 SHEETS STA. 110+00.00 TO STA. 115+00.00					