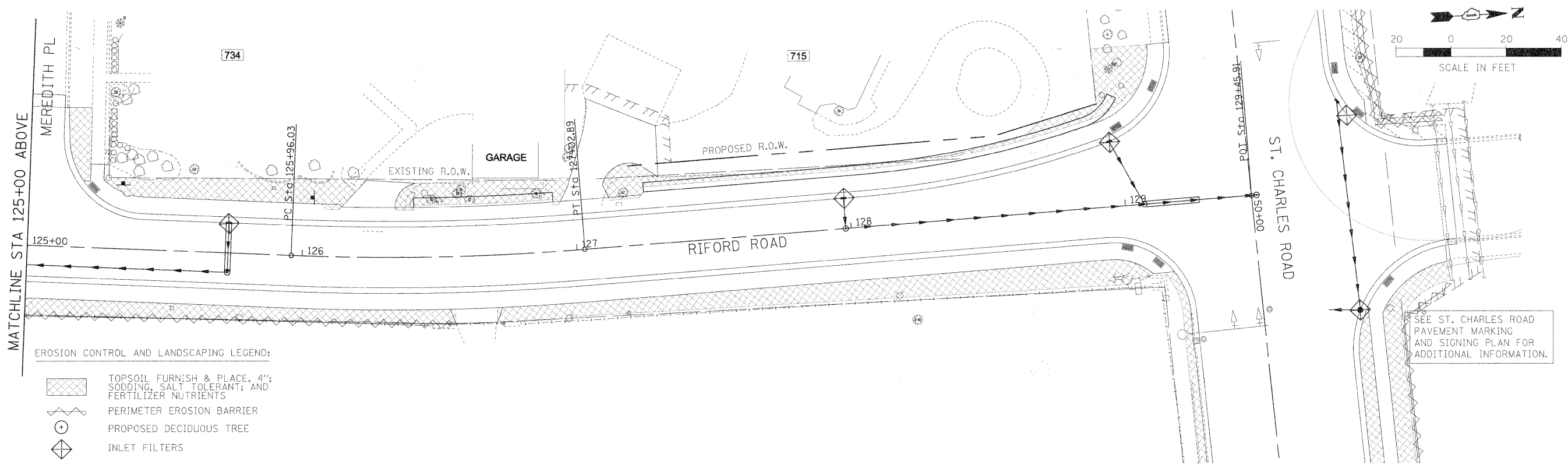
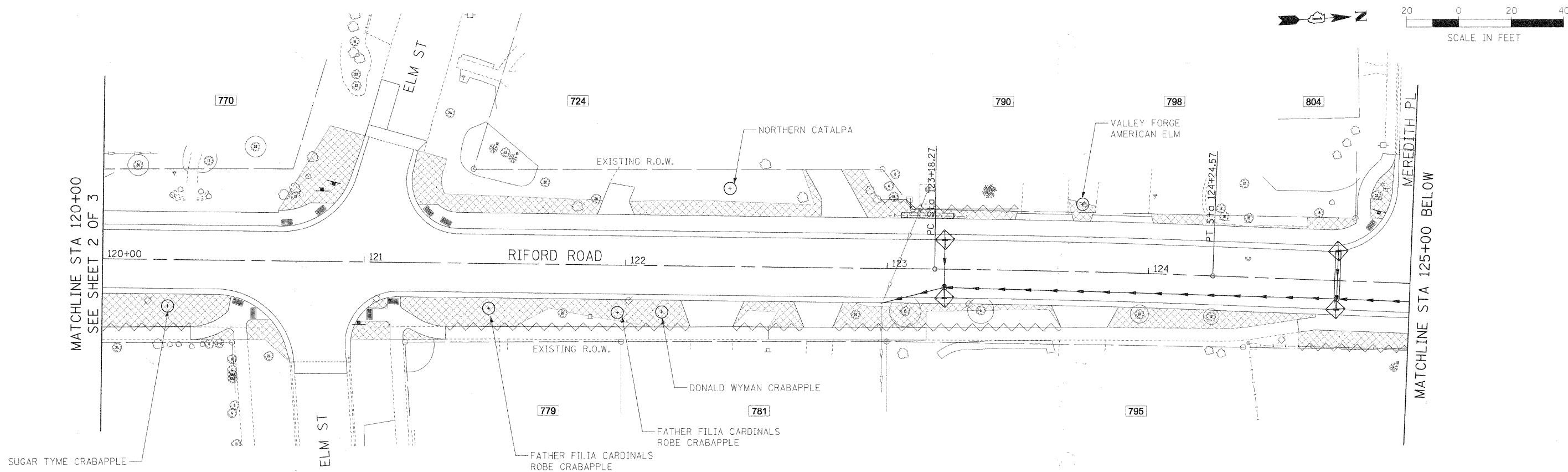

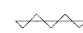


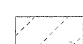


PLAN	SURVEYED	DATE
	PLOTTED	
	NOTED	
	BY	
	NO.	
	FILE NAME	

PROFILE	SURVEYED	DATE
	PLOTTED	
	NOTED	
	BY	
	NO.	
	FILE NAME	



EROSION CONTROL AND LANDSCAPING LEGEND:

-  TOPSOIL FURNISH & PLACE, 4" SODDING, SALT TOLERANT, AND FERTILIZER NUTRIENTS
-  PERIMETER EROSION BARRIER
-  PROPOSED DECIDUOUS TREE
-  INLET FILTERS
-  TOPSOIL FURNISH & PLACE, 6" SEEDING AS INDICATED

•INSTALL PERIMETER EROSION CONTROL OUTSIDE OF WETLAND LIMITS

FILE NAME #	USER NAME #	DESIGNED -	REVISED -	STATE OF ILLINOIS DEPARTMENT OF TRANSPORTATION	RIFORD ROAD EROSION CONTROL AND LANDSCAPING PLAN	F.A.U. RTE. 2112	SECTION 05-00068-00-FP	COUNTY DUPAGE	TOTAL SHEETS 141	SHEET NO. 74	
#FILE#	PLLOT SCALE #	DRAWN -	REVISED -			SCALE: 1"=20'	SHEET NO. 3 OF 3 SHEETS	RIFORD ROAD RECONSTRUCTION		CONTRACT NO. 63092	
	PLLOT DATE #	CHECKED -	REVISED -			STA. 120+00.00 TO STA. 129+44.85		FED. ROAD DIST. NO. 1 ILLINOIS FED. AID PROJECT			
		DATE 12/01/2009	REVISED -								