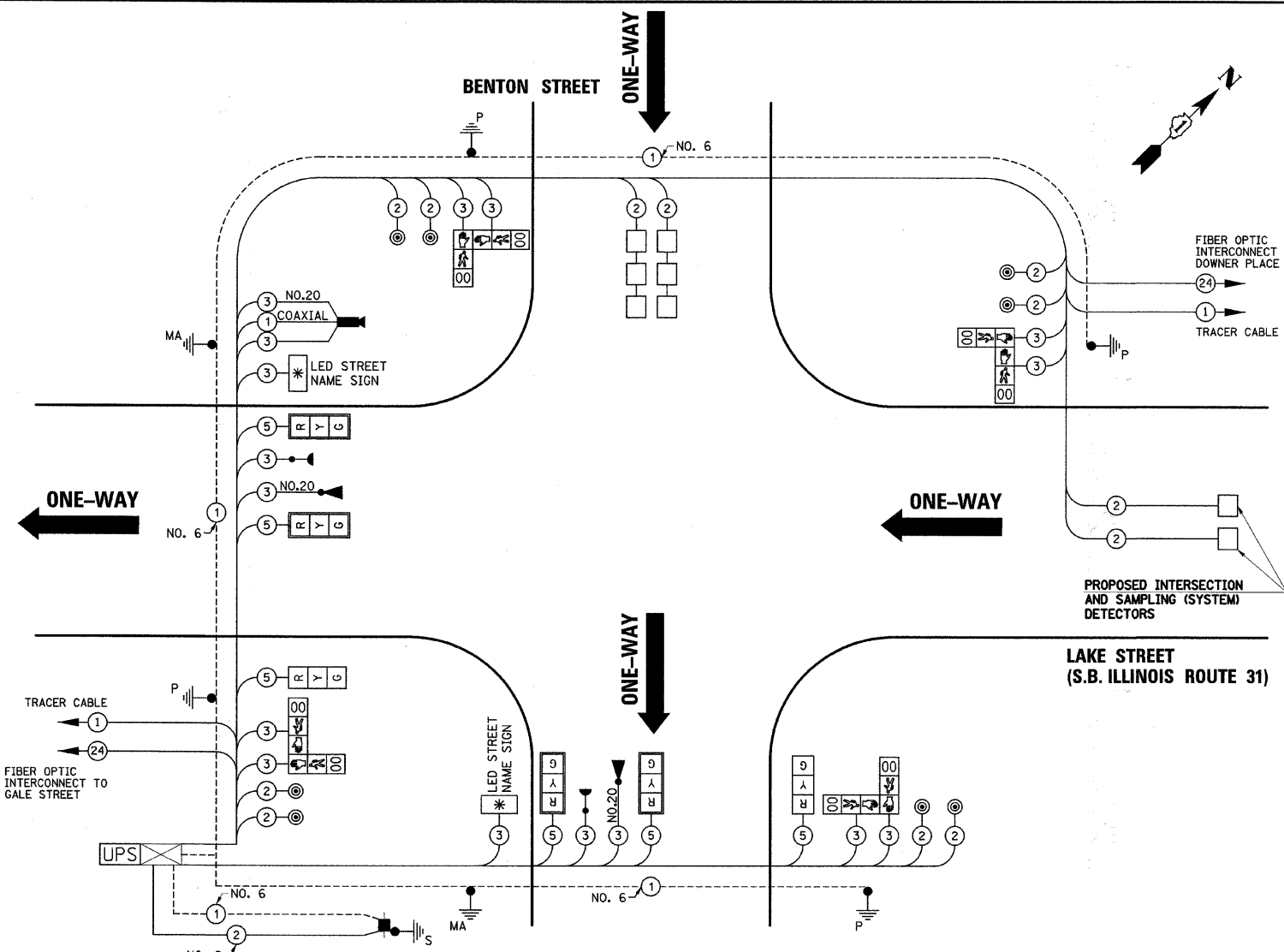


DATE	
BY	
SURVEYED	
ALIGNED	
RT. OF WAY CHECKED	
NO. 6	
PLAN	
NOTE BOOK	
NO.	

DATE	
BY	
SURVEYED	
GRADES CHECKED	
B.M. NOTED	
STRUCTURE NOTATION CHECKED	
NO.	
PROFILE	
NOTE BOOK	
NO.	



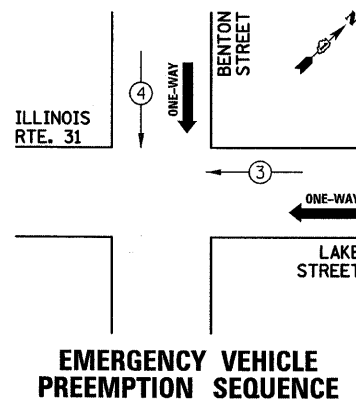
### SCHEDULE OF QUANTITIES

PAY ITEM DESCRIPTION	UNIT	BENTON STREET
SIGN PANEL - TYPE 1	SQ FT	27.2
THERMOPLASTIC PAVEMENT MARKING - LINE 12"	FOOT	324
THERMOPLASTIC PAVEMENT MARKING - LINE 24"	FOOT	86
PAVEMENT MARKING REMOVAL	SQ FT	330
CONDUIT IN TRENCH, 2" DIA., GALVANIZED STEEL	FOOT	217
CONDUIT IN TRENCH, 2 1/2" DIA., GALVANIZED STEEL	FOOT	126
CONDUIT PUSHED, 2" DIA., GALVANIZED STEEL	FOOT	120
CONDUIT PUSHED, 2 1/2" DIA., GALVANIZED STEEL	FOOT	30
CONDUIT PUSHED, 4" DIA., GALVANIZED STEEL	FOOT	184
HANDHOLE	EACH	3
TRENCH AND BACKFILL FOR ELECTRICAL WORK	FOOT	404
MAINTENANCE OF EXISTING TRAFFIC SIGNAL INSTALLATION	EACH	1
FULL-ACTUATED CONTROLLER IN EXISTING CABINET	EACH	1
ELECTRIC CABLE IN CONDUIT, SIGNAL NO. 14 2C	FOOT	854
ELECTRIC CABLE IN CONDUIT, SIGNAL NO. 14 3C	FOOT	1525.5
ELECTRIC CABLE IN CONDUIT, SIGNAL NO. 14 5C	FOOT	854.5
ELECTRIC CABLE IN CONDUIT, LEAD-IN, NO. 14 1 PAIR	FOOT	1026
ELECTRIC CABLE IN CONDUIT, SERVICE, NO. 6 2 C	FOOT	84
TRAFFIC SIGNAL POST, GALVANIZED STEEL 10 FT.	EACH	2
TRAFFIC SIGNAL POST, GALVANIZED STEEL 14 FT.	EACH	2
STEEL COMBINATION MAST ARM ASSEMBLY AND POLE 30 FT. (SPECIAL)	EACH	1
STEEL COMBINATION MAST ARM ASSEMBLY AND POLE 38 FT. (SPECIAL)	EACH	1
CONCRETE FOUNDATION, TYPE A	FOOT	16
CONCRETE FOUNDATION, TYPE E 36-INCH DIAMETER	FOOT	22
DRILL EXISTING HANDHOLE	EACH	8
SIGNAL HEAD, LED, 1-FACE, 3-SECTION, MAST-ARM MOUNTED	EACH	4
SIGNAL HEAD, LED, 1-FACE, 3-SECTION, BRACKET MOUNTED	EACH	2
PEDESTRIAN SIGNAL HEAD, LED, 2-FACE, BRACKET MOUNTED WITH COUNTDOWN TIMER	EACH	4
TRAFFIC SIGNAL BACKPLATE, LOUVERED, ALUMINUM	EACH	4
INDUCTIVE LOOP DETECTOR	EACH	4
DETECTOR LOOP, TYPE I	FOOT	332.9
LIGHT DETECTOR	EACH	2
LIGHT DETECTOR AMPLIFIER	EACH	1
PEDESTRIAN PUSH-BUTTON	EACH	8
REMOVE ELECTRIC CABLE FROM CONDUIT	FOOT	1216
REMOVE EXISTING TRAFFIC SIGNAL EQUIPMENT	EACH	1
REMOVE EXISTING HANDHOLE	EACH	1
REMOVE EXISTING CONCRETE FOUNDATION	EACH	6
SERVICE INSTALLATION - POLE MOUNTED	EACH	1
PAINT TRAFFIC SIGNAL POST	EACH	4
UNINTERRUPTABLE POWER SUPPLY	EACH	1
ELECTRIC CABLE IN CONDUIT, GROUNDING, NO. 6 1C	FOOT	452.5
ELECTRIC CABLE IN CONDUIT NO. 20 3/C, TWISTED, SHIELDED	FOOT	394
VIDEO BELDEN 8281 COAXIAL CABLE IN CONDUIT	FOOT	138.5
L.E.D. INTERNALLY ILLUMINATED STREET NAME SIGN	EACH	2
GROUND EXISTING HANDHOLE FRAME AND COVER	EACH	2
INTERSECTION VIDEO TRAFFIC MONITORING SYSTEM WITH PTZ CAMERA	EACH	1

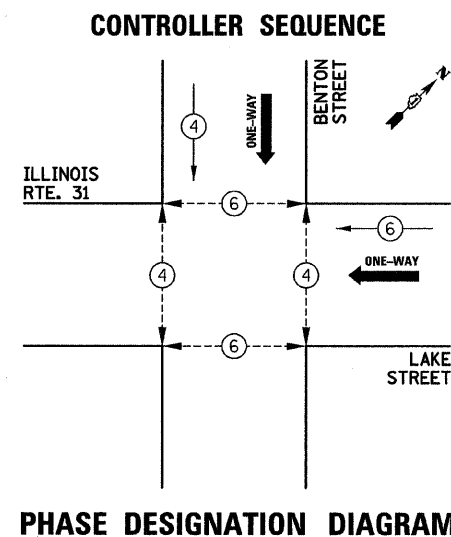
I.D.O.T TRAFFIC SIGNAL INSTALLATION ELECTRICAL SERVICE REQUIREMENTS					
TYPE	NO. LAMPS	WATTAGE		% OPERATION	TOTAL WATTAGE
		INCAND.	LED		
SIGNAL (RED)	6	17	0.50		51
(YELLOW)	6	25	0.25		37.5
(GREEN)	6	15	0.25		22.5
ARROW		12	0.10		
PED. SIGNAL	8	25	1.00		200
CONTROLLER	1	100	1.00		100
UPS	1	25	1.00		25
LED SIGN	2	60	0.50		60
TOTAL =					496

ENERGY COSTS TO: CITY OF AURORA  
44 E. DOWNER PLACE  
AURORA, ILLINOIS 60507-2067

ENERGY SUPPLY CONTACT: MARK SCHERIBEL  
PHONE: (630) 723-2128  
COMPANY: COMMONWEALTH EDISON



PROPOSED EMERGENCY VEHICLE PREEMPTORS		
PROPOSED EMERGENCY VEHICLE PREEMPTORS	3	4
MOVEMENT	←	↓



CONTROLLER SEQUENCE LEGEND	
← * →	DUAL ENTRY PHASE
← *	SINGLE ENTRY PHASE
← * OL	OVERLAP
*	NUMBER REFERRING TO ASSOCIATED PHASE
← * →	PEDESTRIAN PHASE

THE TRAFFIC SIGNAL CONTROL EQUIPMENT FOR THIS PROJECT SHALL BE "ECONOLITE" TO MATCH THE EXISTING ADJACENT SYSTEM.

THE EMERGENCY VEHICLE PREEMPTION EQUIPMENT FOR THIS PROJECT SHALL BE OPTICOM AS REQUIRED BY THE CITY OF AURORA.

FILE NAME = ...\\690.2.sigs02o\_benton.dgn

USER NAME = USER  
PLOT SCALE = #SCALE#  
PLOT DATE = 3/11/2010

DESIGNED -  
DRAWN JMR  
CHECKED JRS  
DATE -

REVISED -  
REVISED -  
REVISED -  
REVISED -

STATE OF ILLINOIS  
DEPARTMENT OF TRANSPORTATION

CABLE PLAN AND  
PHASE DESIGNATION DIAGRAM  
BENTON STREET

SCALE: SHEET NO. OF SHEETS STA. TO STA.

F.A.U. RTE.	SECTION	COUNTY	TOTAL SHEETS	SHEET NO.
3902	05-00258-00-TL	KANE	61	16
FED. ROAD DIST. NO. [ILLINOIS] FED. AID PROJECT			CONTRACT NO. 63251	