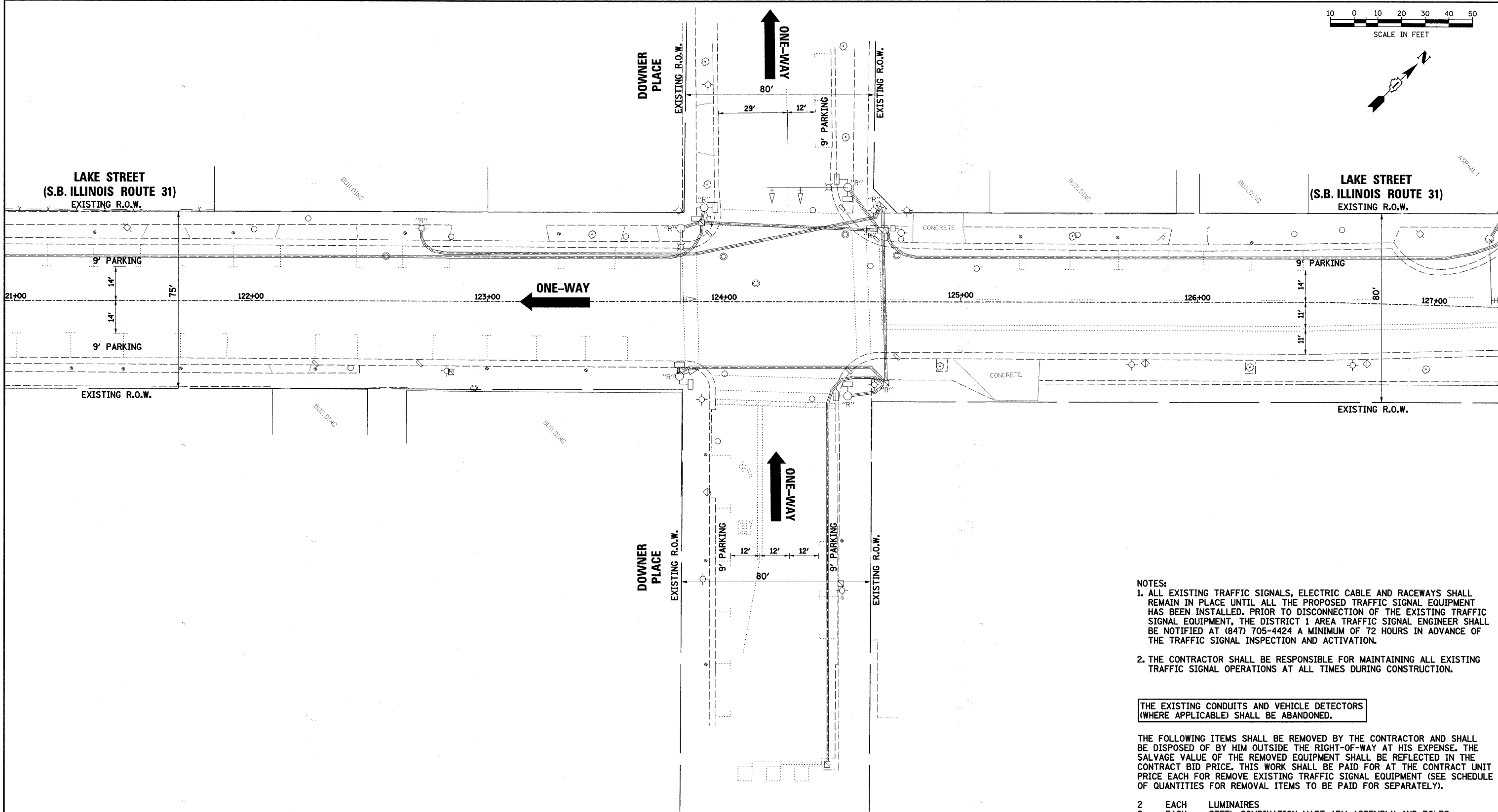


PLAN	SURVEYED	DATE
	ALIGNMENT CHECKED	
	P.T. OF WAY CHECKED	
	PAID FILE NAME	
	NO.	

PROFILE	SURVEYED	DATE
	GRADES CHECKED	
	STRUCTURE NOTATIONS CH'RD	
	NO.	



- NOTES:**
1. ALL EXISTING TRAFFIC SIGNALS, ELECTRIC CABLE AND RACEWAYS SHALL REMAIN IN PLACE UNTIL ALL THE PROPOSED TRAFFIC SIGNAL EQUIPMENT HAS BEEN INSTALLED. PRIOR TO DISCONNECTION OF THE EXISTING TRAFFIC SIGNAL EQUIPMENT, THE DISTRICT 1 AREA TRAFFIC SIGNAL ENGINEER SHALL BE NOTIFIED AT (847) 705-4424 A MINIMUM OF 72 HOURS IN ADVANCE OF THE TRAFFIC SIGNAL INSPECTION AND ACTIVATION.
  2. THE CONTRACTOR SHALL BE RESPONSIBLE FOR MAINTAINING ALL EXISTING TRAFFIC SIGNAL OPERATIONS AT ALL TIMES DURING CONSTRUCTION.

THE EXISTING CONDUITS AND VEHICLE DETECTORS (WHERE APPLICABLE) SHALL BE ABANDONED.

THE FOLLOWING ITEMS SHALL BE REMOVED BY THE CONTRACTOR AND SHALL BE DISPOSED OF BY HIM OUTSIDE THE RIGHT-OF-WAY AT HIS EXPENSE. THE SALVAGE VALUE OF THE REMOVED EQUIPMENT SHALL BE REFLECTED IN THE CONTRACT BID PRICE. THIS WORK SHALL BE PAID FOR AT THE CONTRACT UNIT PRICE EACH FOR REMOVE EXISTING TRAFFIC SIGNAL EQUIPMENT (SEE SCHEDULE OF QUANTITIES FOR REMOVAL ITEMS TO BE PAID FOR SEPARATELY).

- |   |      |   |
|---|------|---|
| 2 | EACH | LUMINAIRES                                    |
| 2 | EACH | STEEL COMBINATION MAST ARM ASSEMBLY AND POLES |
| 3 | EACH | TRAFFIC SIGNAL POSTS                          |
| 5 | EACH | TRAFFIC SIGNAL HEADS                          |
| 3 | EACH | TRAFFIC SIGNAL BACKPLATES                     |
| 8 | EACH | PEDESTRIAN SIGNAL HEADS                       |
| 1 | EACH | SERVICE INSTALLATION                          |

THE FOLLOWING EXISTING TRAFFIC SIGNAL EQUIPMENT SHALL BE REMOVED BY THE CONTRACTOR, SHALL BECOME THE PROPERTY OF THE CITY OF AURORA AND SHALL BE DELIVERED BY THE CONTRACTOR TO THE MAINTENANCE FACILITY DESIGNATED BY THE CITY. THIS WORK SHALL BE INCLUDED IN THE CONTRACT UNIT PRICE FOR REMOVE EXISTING TRAFFIC SIGNAL EQUIPMENT.

- |   |      |  |
|---|------|--|
| 1 | EACH | TRAFFIC SIGNAL CONTROLLER AND CABINET (COMPLETE) |
|---|------|--|

FILE NAME =  
...\\690.2.sigs83a\_downer.dgn

USER NAME = .USER\_  
DESIGNED -  
DRAWN JMR  
CHECKED JRS  
PLOT SCALE = #SCALE#  
PLOT DATE = 3/11/2010

DESIGNED -  
DRAWN JMR  
CHECKED JRS  
DATE -

REVISED -  
REVISED -  
REVISED -  
REVISED -

**STATE OF ILLINOIS  
DEPARTMENT OF TRANSPORTATION**

**EXISTING TRAFFIC SIGNAL EQUIPMENT TO BE REMOVED  
DOWNER PLACE**

F.A.U. RTE.	SECTION	COUNTY	TOTAL SHEETS	SHEET NO.
3902	05-00258-00-TL	KANE	61	17
FED. ROAD DIST. NO.				ILLINOIS FED. AID PROJECT
CONTRACT NO.				63251

SCALE: SHEET NO. OF SHEETS STA. TO STA.