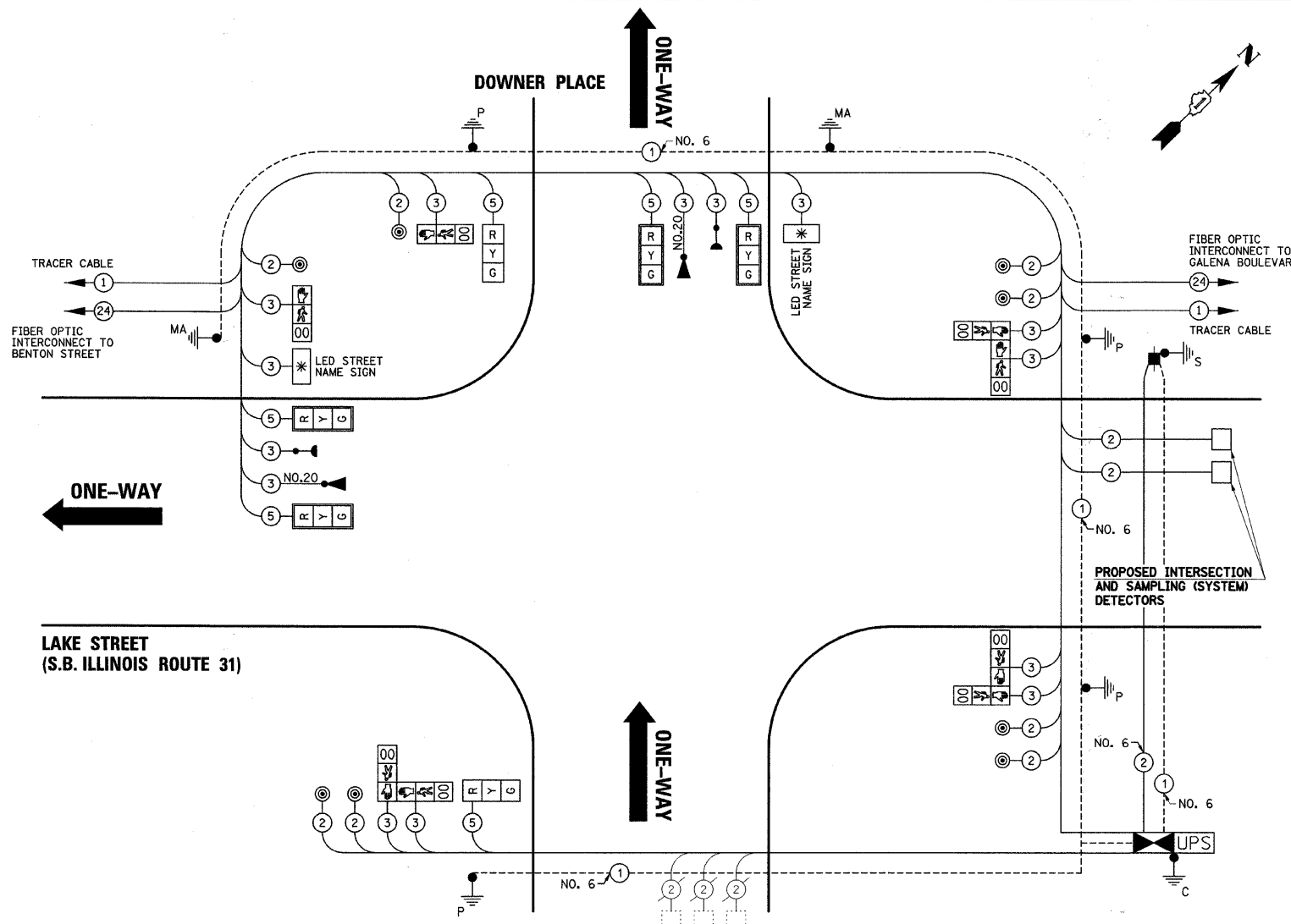


DATE	
BY	
PLAN	
NO.	
DATE	
BY	
PROFILE	
NO.	
DATE	
BY	
PROFILE	
NO.	

DATE	
BY	
PROFILE	
NO.	
DATE	
BY	
PROFILE	
NO.	



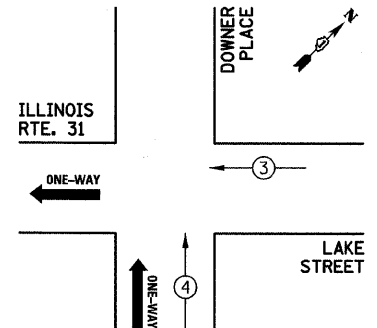
SCHEDULE OF QUANTITIES

PAY ITEM DESCRIPTION	UNIT	DOWNER PLACE
SIGN PANEL - TYPE 1	SQ FT	14
THERMOPLASTIC PAVEMENT MARKING - LINE 12"	FOOT	408
THERMOPLASTIC PAVEMENT MARKING - LINE 24"	FOOT	86
PAVEMENT MARKING REMOVAL	SQ FT	376
CONDUIT IN TRENCH, 2" DIA., GALVANIZED STEEL	FOOT	177
CONDUIT IN TRENCH, 2 1/2" DIA., GALVANIZED STEEL	FOOT	129
CONDUIT IN TRENCH, 4" DIA., GALVANIZED STEEL	FOOT	51
CONDUIT PUSHED, 2" DIA., GALVANIZED STEEL	FOOT	218
CONDUIT PUSHED, 4" DIA., GALVANIZED STEEL	FOOT	215
HANDHOLE	EACH	2
DOUBLE HANDHOLE	EACH	1
TRENCH AND BACKFILL FOR ELECTRICAL WORK	FOOT	344
MAINTENANCE OF EXISTING TRAFFIC SIGNAL INSTALLATION	EACH	1
FULL-ACTUATED CONTROLLER AND TYPE IV CABINET, SPECIAL	EACH	1
ELECTRIC CABLE IN CONDUIT, SIGNAL NO. 14 2C	FOOT	1057
ELECTRIC CABLE IN CONDUIT, SIGNAL NO. 14 3C	FOOT	1857
ELECTRIC CABLE IN CONDUIT, SIGNAL NO. 14 6C	FOOT	1154.5
ELECTRIC CABLE IN CONDUIT, LEAD-IN, NO. 14 1 PAIR	FOOT	682
ELECTRIC CABLE IN CONDUIT, SERVICE, NO. 6 2 C	FOOT	174
TRAFFIC SIGNAL POST, GALVANIZED STEEL 10 FT.	EACH	2
TRAFFIC SIGNAL POST, GALVANIZED STEEL 14 FT.	EACH	2
STEEL COMBINATION MAST ARM ASSEMBLY AND POLE 32 FT. (SPECIAL)	EACH	1
STEEL COMBINATION MAST ARM ASSEMBLY AND POLE 38 FT. (SPECIAL)	EACH	1
CONCRETE FOUNDATION, TYPE A	FOOT	16
CONCRETE FOUNDATION, TYPE C	FOOT	4
CONCRETE FOUNDATION, TYPE E 36-INCH DIAMETER	FOOT	22
DRILL EXISTING HANDHOLE	EACH	7
SIGNAL HEAD, LED, 1-FACE, 3-SECTION, MAST-ARM MOUNTED	EACH	4
SIGNAL HEAD, LED, 1-FACE, 3-SECTION, BRACKET MOUNTED	EACH	2
PEDESTRIAN SIGNAL HEAD, LED, 1-FACE, BRACKET MOUNTED WITH COUNTDOWN TIMER	EACH	2
PEDESTRIAN SIGNAL HEAD, LED, 2-FACE, BRACKET MOUNTED WITH COUNTDOWN TIMER	EACH	3
TRAFFIC SIGNAL BACKPLATE, LOUVERED, ALUMINUM	EACH	4
INDUCTIVE LOOP DETECTOR	EACH	2
DETECTOR LOOP, TYPE I	FOOT	63.5
LIGHT DETECTOR	EACH	2
LIGHT DETECTOR AMPLIFIER	EACH	1
PEDESTRIAN PUSH-BUTTON	EACH	8
REMOVE ELECTRIC CABLE FROM CONDUIT	FOOT	2264
REMOVE EXISTING TRAFFIC SIGNAL EQUIPMENT	EACH	1
REMOVE EXISTING HANDHOLE	EACH	2
REMOVE EXISTING CONCRETE FOUNDATION	EACH	6
SERVICE INSTALLATION - POLE MOUNTED	EACH	1
PAINT TRAFFIC SIGNAL POST	EACH	4
UNINTERRUPTABLE POWER SUPPLY	EACH	1
ELECTRIC CABLE IN CONDUIT, GROUNDING, NO. 6 1C	FOOT	586.5
ELECTRIC CABLE IN CONDUIT NO. 20 3C, TWISTED, SHIELDED	FOOT	414.5
L.E.D. INTERNALLY ILLUMINATED STREET NAME SIGN	EACH	2
GROUND EXISTING HANDHOLE FRAME AND COVER	EACH	2

I.D.O.T TRAFFIC SIGNAL INSTALLATION ELECTRICAL SERVICE REQUIREMENTS					TOTAL WATTAGE
TYPE	NO. LAMPS	WATTAGE		% OPERATION	
SIGNAL (RED)	6	INCAND.	17	0.50	51
		LED	25	0.25	37.5
		(GREEN)	15	0.25	22.5
ARROW			12	0.10	
PED. SIGNAL	8		25	1.00	200
CONTROLLER	1		100	1.00	100
UPS	1		25	1.00	25
LED SIGN	2		60	0.50	60
TOTAL =					496

ENERGY COSTS TO: CITY OF AURORA
 44 E. DOWNER PLACE
 AURORA, ILLINOIS 60507-2067

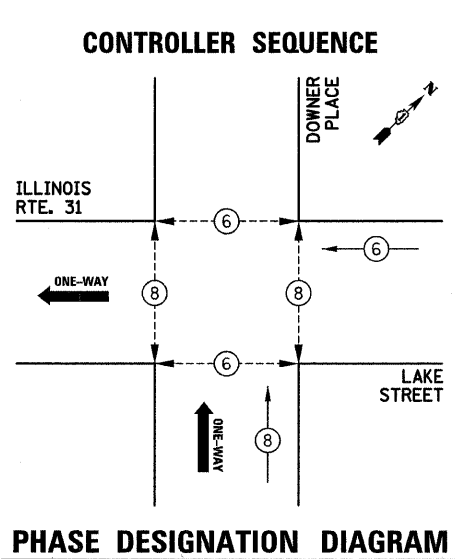
ENERGY SUPPLY CONTACT: MARK SCHERIBEL
 PHONE: (630) 723-2128
 COMPANY: COMMONWEALTH EDISON



EMERGENCY VEHICLE PREEMPTION SEQUENCE

PROPOSED EMERGENCY VEHICLE PREEMPTORS

PROPOSED EMERGENCY VEHICLE PREEMPTORS	3	4
MOVEMENT	←	↑



CONTROLLER SEQUENCE LEGEND

- ← ⊙ → DUAL ENTRY PHASE
- ← ⊙ → SINGLE ENTRY PHASE
- ← ⊙ → OL OVERLAP
- * NUMBER REFERRING TO ASSOCIATED PHASE
- ← ⊙ → PEDESTRIAN PHASE

THE TRAFFIC SIGNAL CONTROL EQUIPMENT FOR THIS PROJECT SHALL BE "ECONOLITE" TO MATCH THE EXISTING ADJACENT SYSTEM.

THE EMERGENCY VEHICLE PREEMPTION EQUIPMENT FOR THIS PROJECT SHALL BE OPTICOM AS REQUIRED BY THE CITY OF AURORA.