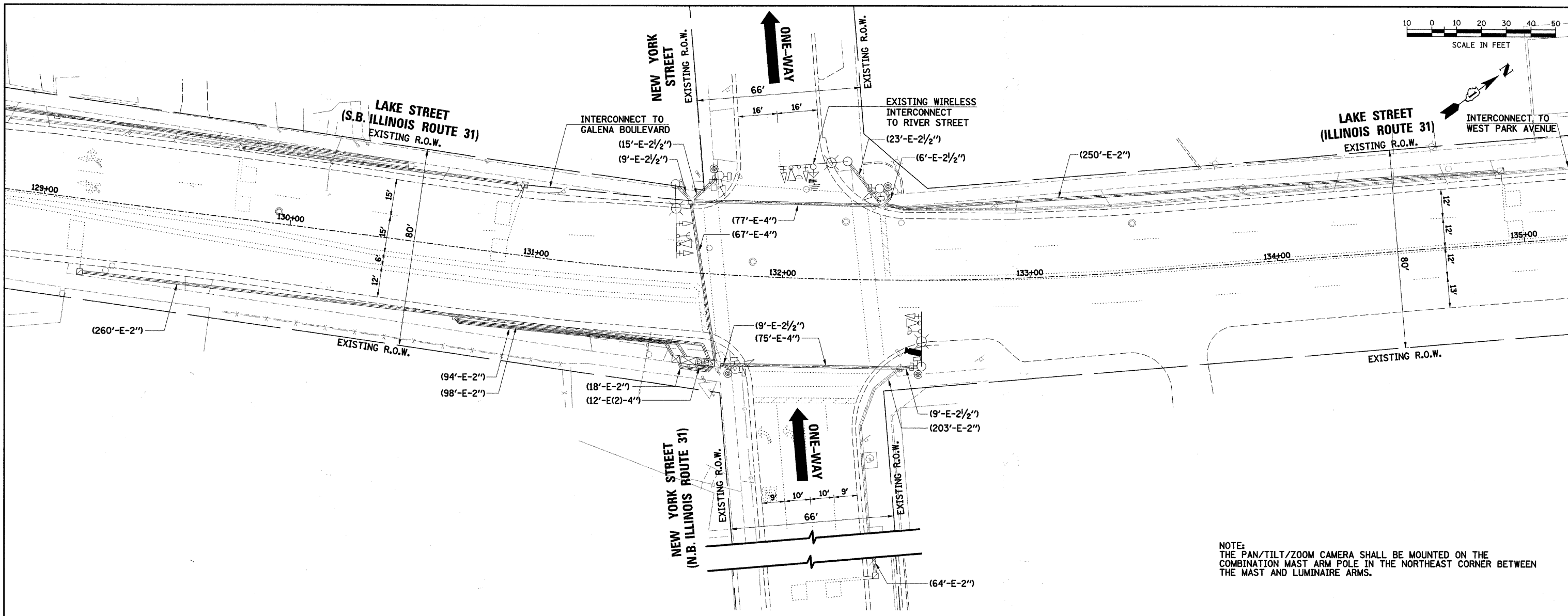


PLAN	DATE
BY	
SAVED	
NOTE BOOK	
NO.	
ALIGNED	
CHECKED	
RT. OF WAY	
CHECKED	
PAID FILE	
NAME	

PROFILE	DATE
BY	
SAVED	
NOTE BOOK	
NO.	
GRADES	
CHECKED	
B.M. NOTED	
STRUCTURE	
NOTATIONS	
CHRD	



NOTE:  
 THE PAN/TILT/ZOOM CAMERA SHALL BE MOUNTED ON THE COMBINATION MAST ARM POLE IN THE NORTHEAST CORNER BETWEEN THE MAST AND LUMINAIRE ARMS.

FILE NAME = ...\\690\_2.sig05b.new york.dgn

USER NAME = \_USER\_  
 DESIGNED -  
 DRAWN *JMR*  
 CHECKED *JRS*  
 DATE -

REVISED -  
 REVISED -  
 REVISED -  
 REVISED -

STATE OF ILLINOIS  
 DEPARTMENT OF TRANSPORTATION

EXISTING TRAFFIC SIGNAL AND MODIFICATION PLAN  
 NEW YORK STREET

F.A.U. RTE. 3902	SECTION 05-00258-00-TL	COUNTY KANE	TOTAL SHEETS 61	SHEET NO. 22
FED. ROAD DIST. NO. ILLINOIS FED. AID PROJECT			CONTRACT NO. 63251	

SCALE: SHEET NO. OF SHEETS STA. TO STA.