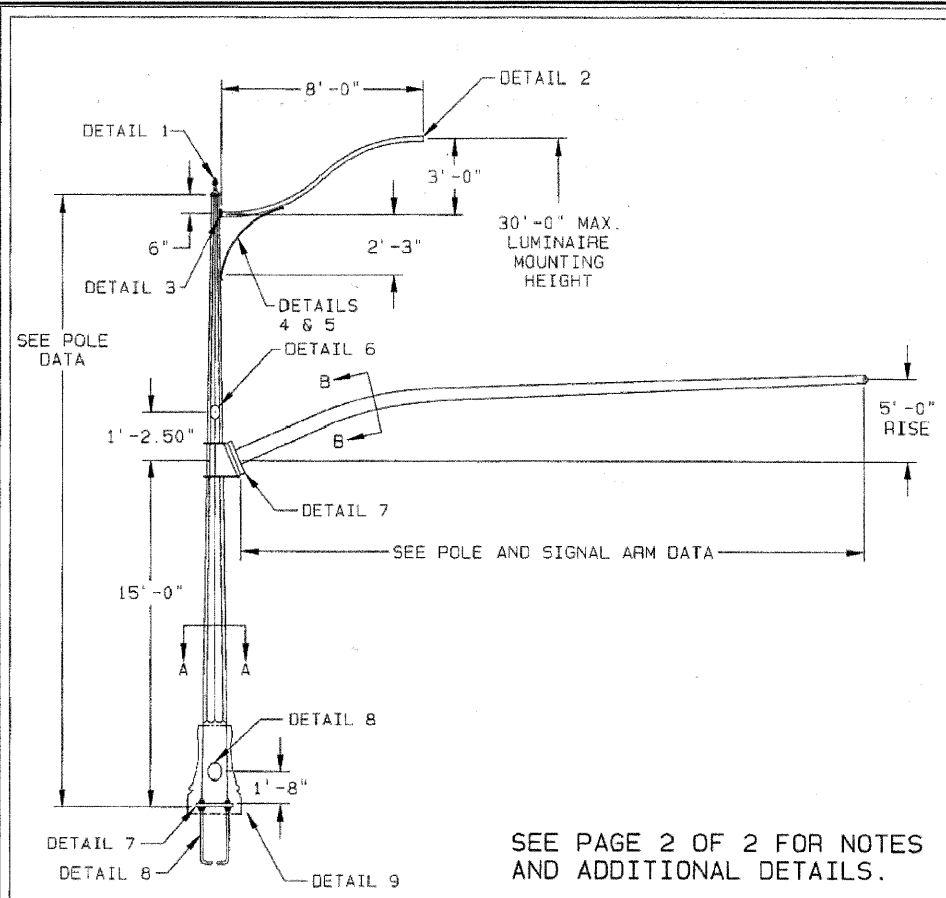
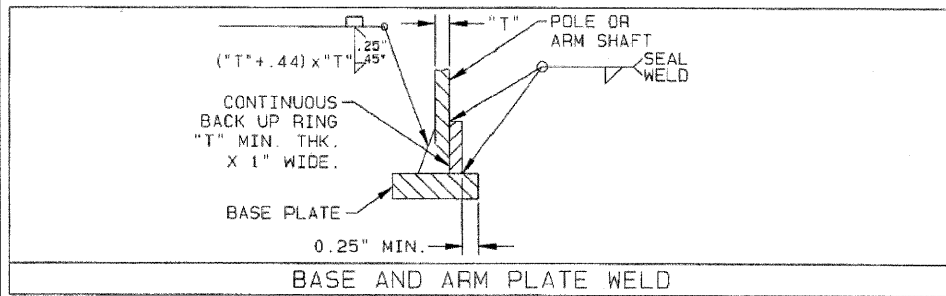


DATE: \_\_\_\_\_  
 BY: \_\_\_\_\_  
 SURVEYED \_\_\_\_\_  
 PLOTTED \_\_\_\_\_  
 GRADES CHECKED \_\_\_\_\_  
 NOTE BOOK \_\_\_\_\_  
 NO. \_\_\_\_\_  
 CADD FILE NAME \_\_\_\_\_

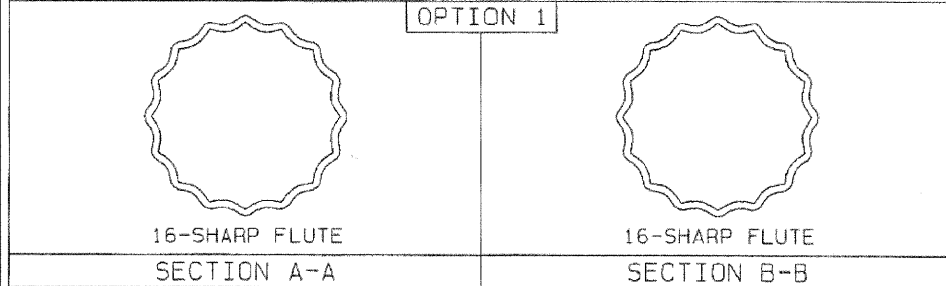
DATE: \_\_\_\_\_  
 BY: \_\_\_\_\_  
 SURVEYED \_\_\_\_\_  
 PLOTTED \_\_\_\_\_  
 GRADES CHECKED \_\_\_\_\_  
 NOTE BOOK \_\_\_\_\_  
 NO. \_\_\_\_\_  
 STRUCTURE NOTATIONS CHFD



SEE PAGE 2 OF 2 FOR NOTES AND ADDITIONAL DETAILS.

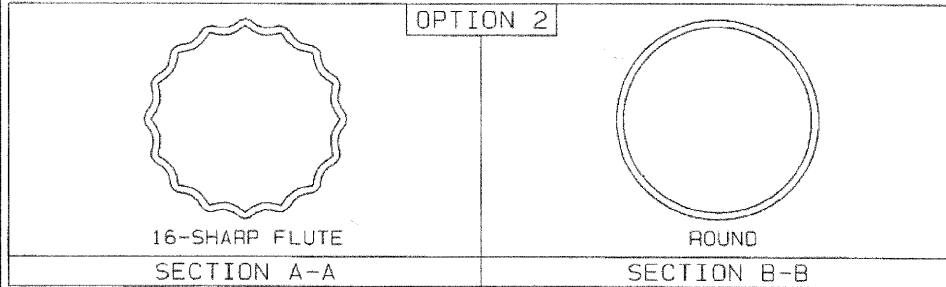


BASE AND ARM PLATE WELD



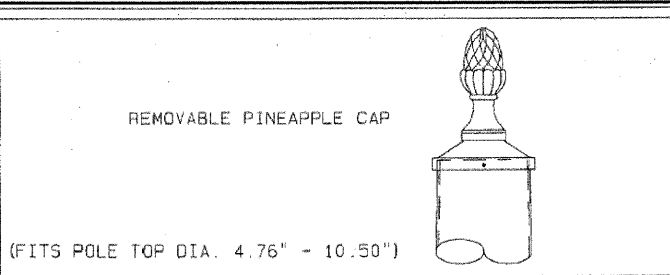
16-SHARP FLUTE SECTION A-A

16-SHARP FLUTE SECTION B-B

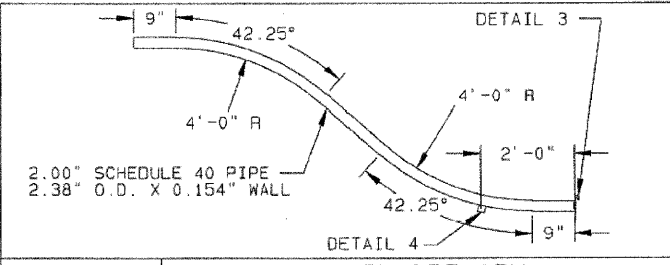


16-SHARP FLUTE SECTION A-A

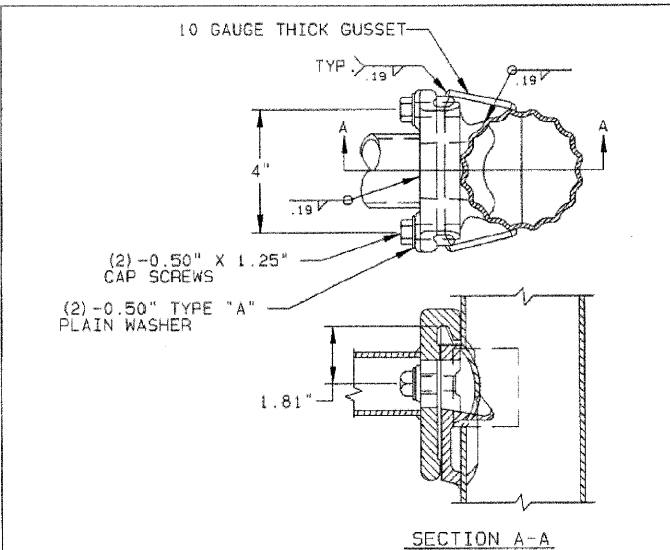
ROUND SECTION B-B



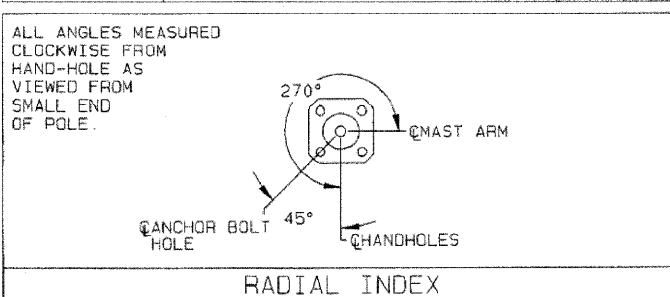
DETAIL 1 PINEAPPLE CAP ASSEMBLY



DETAIL 2 LUMINAIRE ARM



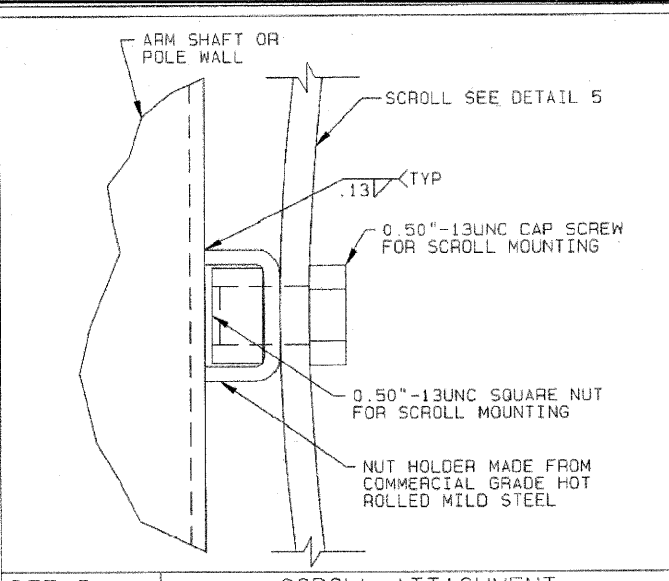
DETAIL 3 LUMINAIRE ARM ATTACHMENT



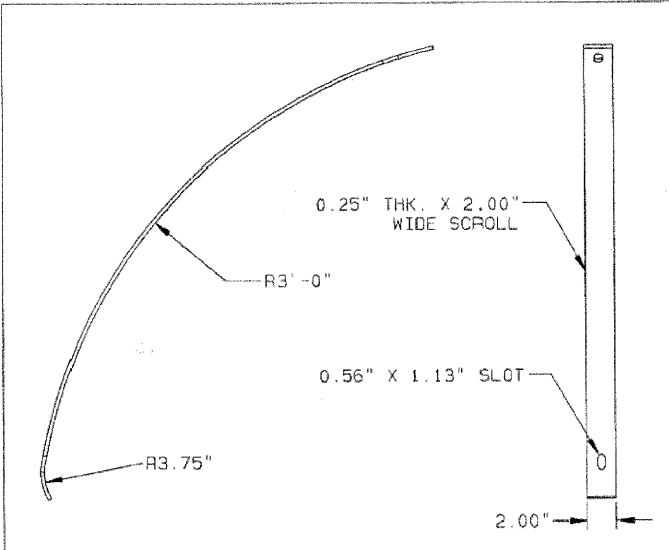
RADIAL INDEX

BASE COAT: HOT DIP GALVANIZE  
 TOP COAT: TGIC OR URETHANE POLYESTER POWDER  
 COLOR: BLACK  
 VALMONT SPEC: F283A

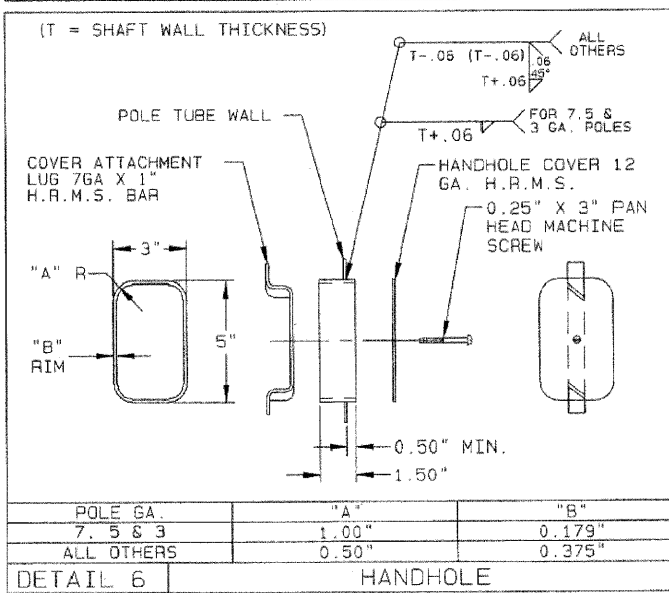
FINISH NOTE



DETAIL 4 SCROLL ATTACHMENT

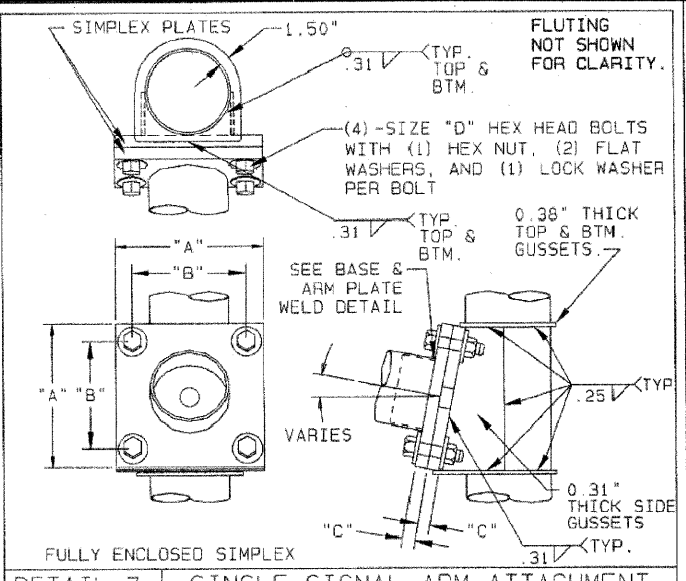


DETAIL 5 SCROLL ARM



DETAIL 6 HANDHOLE

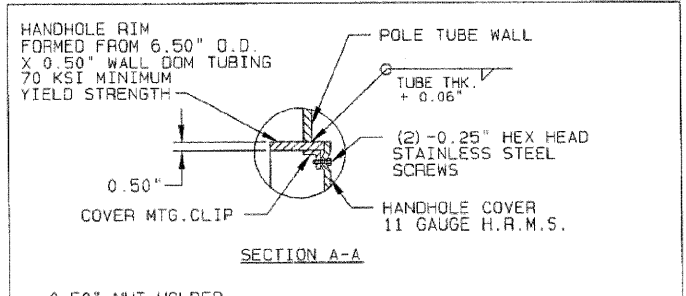
POLE GA.	"A"	"B"
7, 5 & 3	1.00"	0.179"
ALL OTHERS	0.50"	0.375"



DETAIL 7 SINGLE SIGNAL ARM ATTACHMENT

SIGNAL ARM ATTACHMENT DATA

ARM SPAN (FT)	"A" (IN)	"B" (IN)	"C" (IN)	"D"
20.00	17.25	14.00	1.75	1.25" X 5.25"



DETAIL 8 SEMI-FLUSH HANDHOLE

REV	BCM 09/18/07	BCM 09/20/07	DESCRIPTION
	DRAWN BY-DATE	CHECK BY-DATE	

SOLD TO:	JOB
SHIP TO:	
P.O. #:	
AGENT: LIGHTING SOLUTIONS	TITLE: TRAFFIC SIGNAL STRUCTURES

VALMONT INDUSTRIES, INC. RESERVES THE RIGHT TO INSTALL VARIOUS, ENGINEER APPROVED, MATERIAL HANGING ACCOMMODATIONS TO FACILITATE THE MANUFACTURING PROCESS.

VALMONT INDUSTRIES, INC. RESERVES THE RIGHT TO INSTALL VARIOUS, ENGINEER APPROVED, MATERIAL HANGING ACCOMMODATIONS TO FACILITATE THE MANUFACTURING PROCESS.

ORDER NUMBER: 42203-07	PAGE NUMBER: 1 OF 2
DRAWING NUMBER: IL4220307	REV

FILE NAME =	USER NAME = .USER.	DESIGNED -	REVISED -
...Trans\Fin_dwg\698_2.det82.dgn		DRAWN JMR	
		CHECKED JRS	
		DATE -	

STATE OF ILLINOIS	MISCELLANEOUS DETAILS
DEPARTMENT OF TRANSPORTATION	

SCALE:	SHEET NO. OF SHEETS	STA. TO STA.
--------	---------------------	--------------

F.A.U. RTE. 3902	SECTION 05-00258-00-TL	COUNTY KANE	TOTAL SHEETS 61	SHEET NO. 58
FED. ROAD DIST. NO. ILLINOIS FED. AID PROJECT			CONTRACT NO. 63251	

**valmont**  
 Valley, NE 68064  
 (402) 359-2201