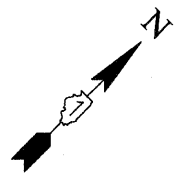

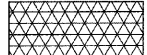
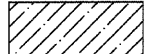


COMPENSATORY STORAGE/WETLAND MITIGATION AREA TO BE DRESSED WITH 12" TOPSOIL

PROPOSED HYDROLOGY MONITORING WELL (NOT INCLUDED IN THIS CONTRACT)



- LANDSCAPING NOTES**
1. TOPSOIL WITHIN LIMITS OF IMPROVEMENTS SHALL BE REMOVED, STOCKPILED AND RESPREAD AT LOCATIONS TO BE SEEDDED OR AS DIRECTED BY THE ENGINEER. THIS COST SHALL BE CONSIDERED INCIDENTAL TO THE COST OF EARTH EXCAVATION.
 2. ALL DISTURBED AREAS SHALL BE DRESSED WITH 6" TOPSOIL, UNLESS OTHERWISE NOTED, AND SEEDDED.

KEY	
	WETLAND IMPACT AREA = 0.08 ACRES
	WETLAND MITIGATION AREA = 0.99 ACRES TO BE PLANTED WITH PLUGS & SEDGE MEADOW SEED MIX
	BUFFER/FLOODPLAIN ENHANCEMENT AREA = 1.34 ACRES TO BE PLANTED WITH LOW PROFILE PRAIRIE SEED MIX



ENGINEERING RESOURCE ASSOCIATES, INC. CONSULTING ENGINEERS, SCIENTISTS & SURVEYORS	USER NAME =	DESIGNED -- EP	REVISED --
	PLOT SCALE =	DRAWN -- DB	REVISED --
	PLOT DATE =	CHECKED -- EP	REVISED --
		DATE -- JANUARY, 2010	REVISED --

STATE OF ILLINOIS
DEPARTMENT OF TRANSPORTATION

WETLAND IMPACT AND PLANTING EXHIBIT
SCALE: 1" = 50' SHEET NO. 1 OF 3 SHEETS STA. 122+00 TO STA. 138+00

F.A. RTE.	SECTION	COUNTY	TOTAL SHEETS	SHEET NO.
	01-P4015-01-BT	WILL	41	16
CONTRACT NO. 63325			ILLINOIS FED. AID PROJECT	

W:\planfile\2010\13 DuPage River Trail\04\Phase 1\Impact Plans.dwg Updated by: abasano 1/14/2010