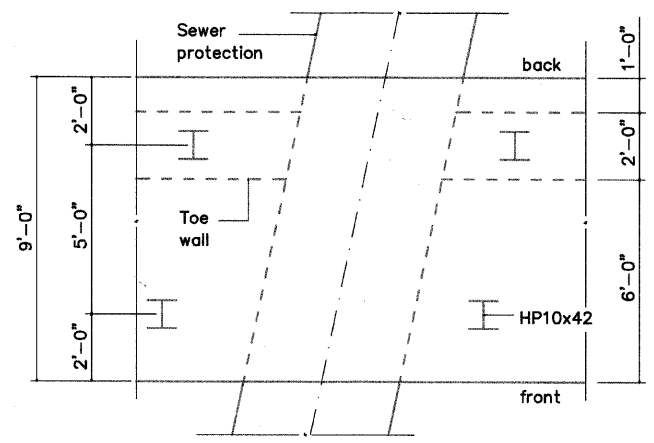


WALL FOUNDATION ELEVATION AT SEWER PROTECTION

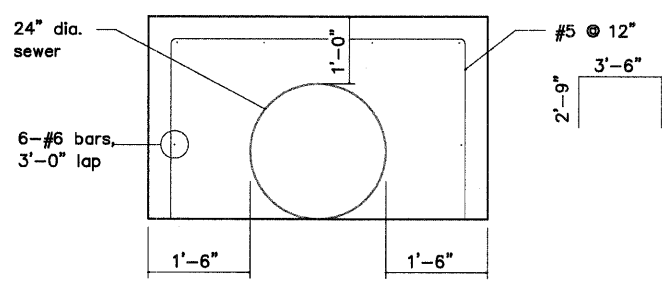
SEWER PROTECTION GUIDELINES.

- 1) Expose sewer line.
- 2) Excavate around sewer for placement of concrete protection.
- 3) Place concrete and rebar for sewer protection.
- 4) Drive piling for retaining walls and abutments.

SEWER PROTECTION MUST BE IN PLACE BEFORE ANY PILES ARE DRIVEN.



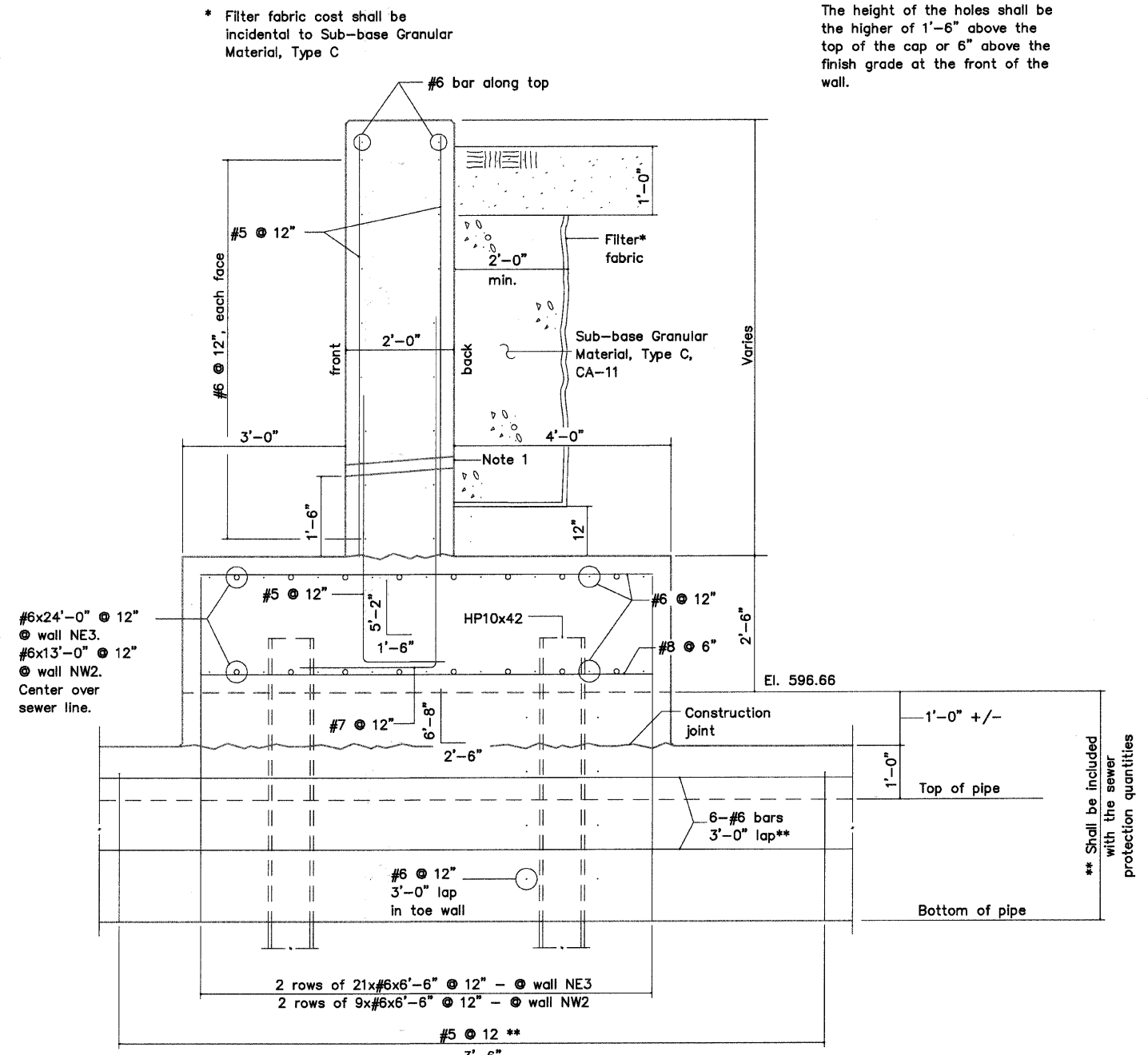
WALL FOUNDATION PLAN AT SEWER PROTECTION



SEWER PROTECTION
102' OF PROTECTION

Clear covers shall be:
 3" bottom
 3" sides of footing
 2" sides of walls
 2" top

All edges shall receive a 3/8" chamfer.



WALL SECTION THROUGH SEWER PROTECTION

Note 1: Place 2" dia. PVC weep holes @ 10' max c/c. Cost shall be included in Concrete Structures. The height of the holes shall be the higher of 1'-6" above the top of the cap or 6" above the finish grade at the front of the wall.

* Filter fabric cost shall be incidental to Sub-base Granular Material, Type C

#6x24'-0" @ 12" @ wall NE3.
 #6x13'-0" @ 12" @ wall NW2.
 Center over sewer line.

2 rows of 21x#6x6'-6" @ 12" - @ wall NE3
 2 rows of 9x#6x6'-6" @ 12" - @ wall NW2

** Shall be included with the sewer protection quantities

** Shall be included with the sewer protection quantities

FRAUENHÖFFER

Frauenhoffer and Associates, P.C. Consulting Engineers
 3002 Crossing Court Champaign, IL 61822 217-351-6268

RETAINING WALL DETAILS - AT SEWER		SHEET	X
		DWG NO.	abut.DWG
		DATE	NOV 2009
		PROJ NO.	8137



USER NAME =	DESIGNED -- KJH	REVISED --
PLOT SCALE =	DRAWN -- KJH	REVISED --
PLOT DATE =	CHECKED -- JF	REVISED --
	DATE -- JANUARY, 2010	REVISED --

STATE OF ILLINOIS
 DEPARTMENT OF TRANSPORTATION

DUPAGE RIVER BRIDGE
 RETAINING WALL DETAILS
 SCALE: 3/8"=1'-0" SHEET NO. 3 OF 3 SHEETS

F.A. RTE.	SECTION	COUNTY	TOTAL SHEETS	SHEET NO.
	01-P4015-01-BT	WILL	41	30
FED. ROAD DIST. NO. 1 ILLINOIS FED. AID PROJECT			CONTRACT NO. 63325	

W:\Planfile\2010\13 DuPage River Trail\Code\Phase 1\Frauenhoffer_Details.dwg Updated by: abusema 1/14/2010