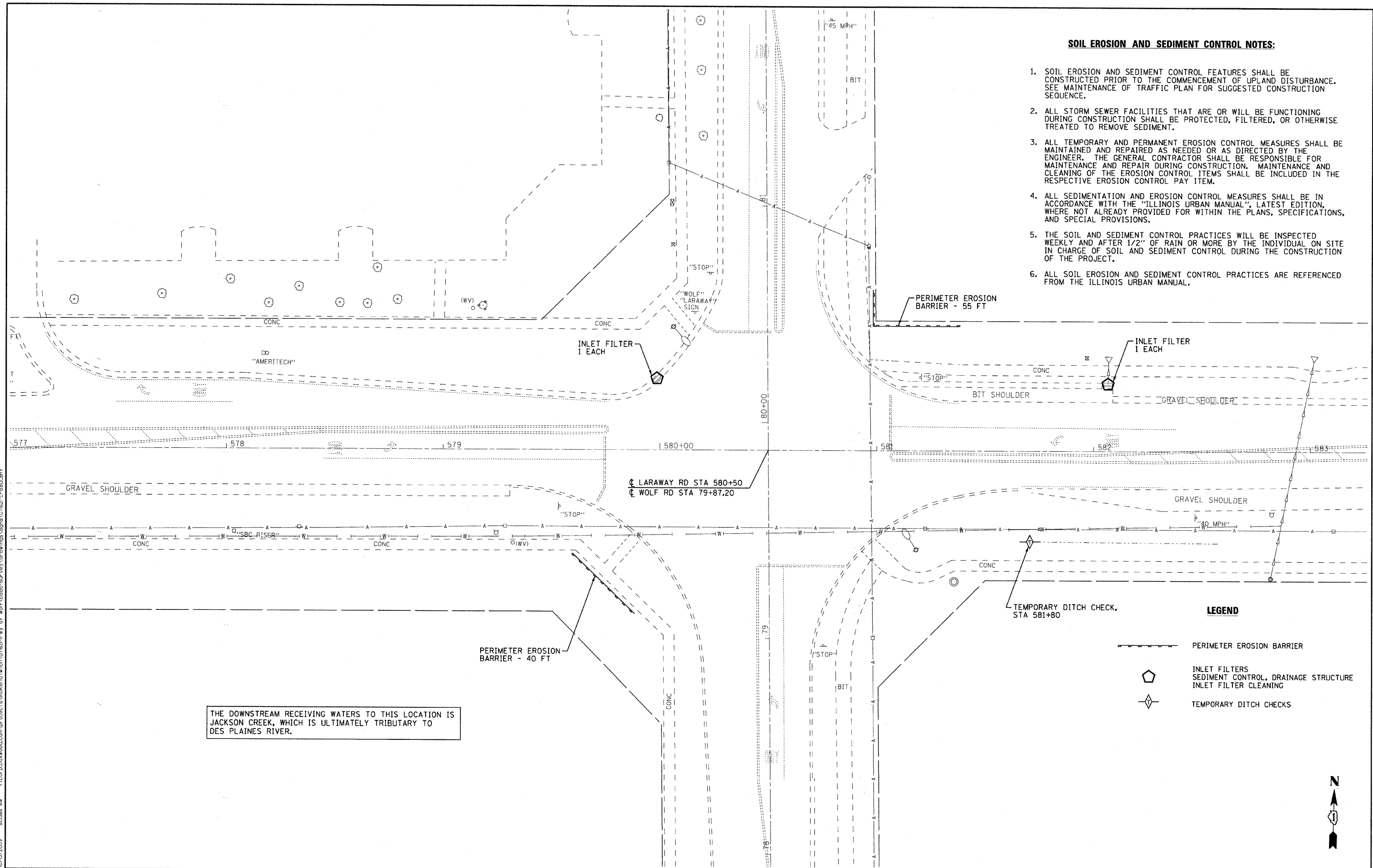


**SOIL EROSION AND SEDIMENT CONTROL NOTES:**

1. SOIL EROSION AND SEDIMENT CONTROL FEATURES SHALL BE CONSTRUCTED PRIOR TO THE COMMENCEMENT OF UPLAND DISTURBANCE. SEE MAINTENANCE OF TRAFFIC PLAN FOR SUGGESTED CONSTRUCTION SEQUENCE.
2. ALL STORM SEWER FACILITIES THAT ARE OR WILL BE FUNCTIONING DURING CONSTRUCTION SHALL BE PROTECTED, FILTERED, OR OTHERWISE TREATED TO REMOVE SEDIMENT.
3. ALL TEMPORARY AND PERMANENT EROSION CONTROL MEASURES SHALL BE MAINTAINED AND REPAIRED AS NEEDED OR AS DIRECTED BY THE ENGINEER. THE GENERAL CONTRACTOR SHALL BE RESPONSIBLE FOR MAINTENANCE AND REPAIR DURING CONSTRUCTION. MAINTENANCE AND CLEANING OF THE EROSION CONTROL ITEMS SHALL BE INCLUDED IN THE RESPECTIVE EROSION CONTROL PAY ITEM.
4. ALL SEDIMENTATION AND EROSION CONTROL MEASURES SHALL BE IN ACCORDANCE WITH THE "ILLINOIS URBAN MANUAL", LATEST EDITION, WHERE NOT ALREADY PROVIDED FOR WITHIN THE PLANS, SPECIFICATIONS, AND SPECIAL PROVISIONS.
5. THE SOIL AND SEDIMENT CONTROL PRACTICES WILL BE INSPECTED WEEKLY AND AFTER 1/2" OF RAIN OR MORE BY THE INDIVIDUAL ON SITE IN CHARGE OF SOIL AND SEDIMENT CONTROL DURING THE CONSTRUCTION OF THE PROJECT.
6. ALL SOIL EROSION AND SEDIMENT CONTROL PRACTICES ARE REFERENCED FROM THE ILLINOIS URBAN MANUAL.



THE DOWNSTREAM RECEIVING WATERS TO THIS LOCATION IS JACKSON CREEK, WHICH IS ULTIMATELY TRIBUTARY TO DES PLAINES RIVER.

**LEGEND**

- PERIMETER EROSION BARRIER
- ◡ INLET FILTERS  
SEDIMENT CONTROL, DRAINAGE STRUCTURE  
INLET FILTER CLEANING
- ◇ TEMPORARY DITCH CHECKS

COPYRIGHT © 2009, BY BAXTER & WOODMAN, INC. ...  
 LICENSE NO. 07-00123 - EXPIRES 4/30/2011  
 10/15/2009 8:55:48 AM



DESIGNED - NJP	REVISED - PER COUNTY 8-20-09
DRAWN - BCD	REVISED - PER IDOT 09-16-09
CHECKED - RWL	REVISED -
DATE - 06-25-09	FILE - 071621-Eros01.shp

**WILL COUNTY DEPARTMENT OF HIGHWAYS  
LARAWAY ROAD AT WOLF ROAD**

**EROSION CONTROL PLAN**

SCALE: 1"=20'

STA. TO STA.

F.A.U. RTE. 320	SECTION 07-00138-26-TL	COUNTY WILL	TOTAL SHEETS 19	SHEET NO. 6
C-91-405-08			CONTRACT NO. 63329	
FED. ROAD DIST. NO. 1 ILLINOIS FED. AID PROJECT				