

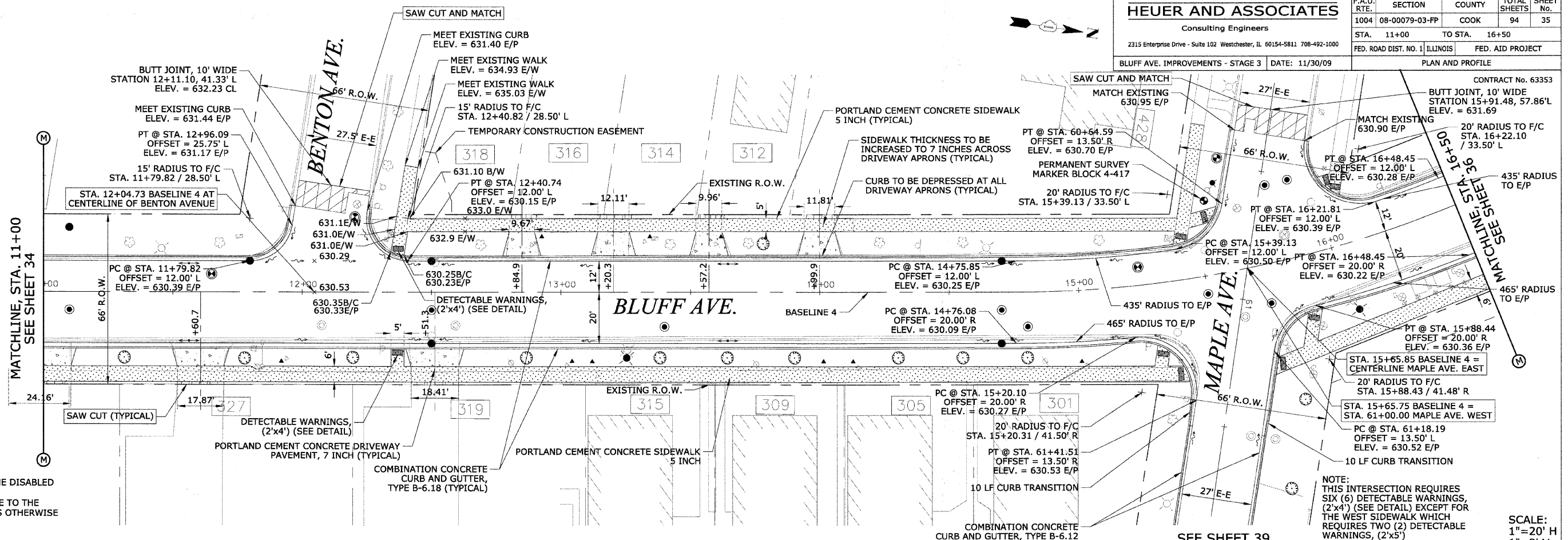
# HEUER AND ASSOCIATES

Consulting Engineers

2315 Enterprise Drive - Suite 102 Westchester, IL 60154-5811 708-492-1000

BLUFF AVE. IMPROVEMENTS - STAGE 3 DATE: 11/30/09

F.A.U. RTE.	SECTION	COUNTY	TOTAL SHEETS	SHEET NO.
1004	08-00079-03-PP	COOK	94	35
STA. 11+00	TO STA. 16+50			
FED. ROAD DIST. NO. 1 ILLINOIS			FED. AID PROJECT	



- NOTES:**
1. CURB RAMPS ACCESSIBLE TO THE DISABLED SHALL BE TYPE B.
  2. ALL STATIONS AND OFFSETS ARE TO THE EDGE OF PAVEMENT UNLESS OTHERWISE NOTED.

NOTE: THIS INTERSECTION REQUIRES SIX (6) DETECTABLE WARNINGS, (2'x4') (SEE DETAIL) EXCEPT FOR THE WEST SIDEWALK WHICH REQUIRES TWO (2) DETECTABLE WARNINGS, (2'x5')

SCALE:  
1"=20' H  
1"=2' V

DATE	BY	REVISION

DATE	BY	REVISION

