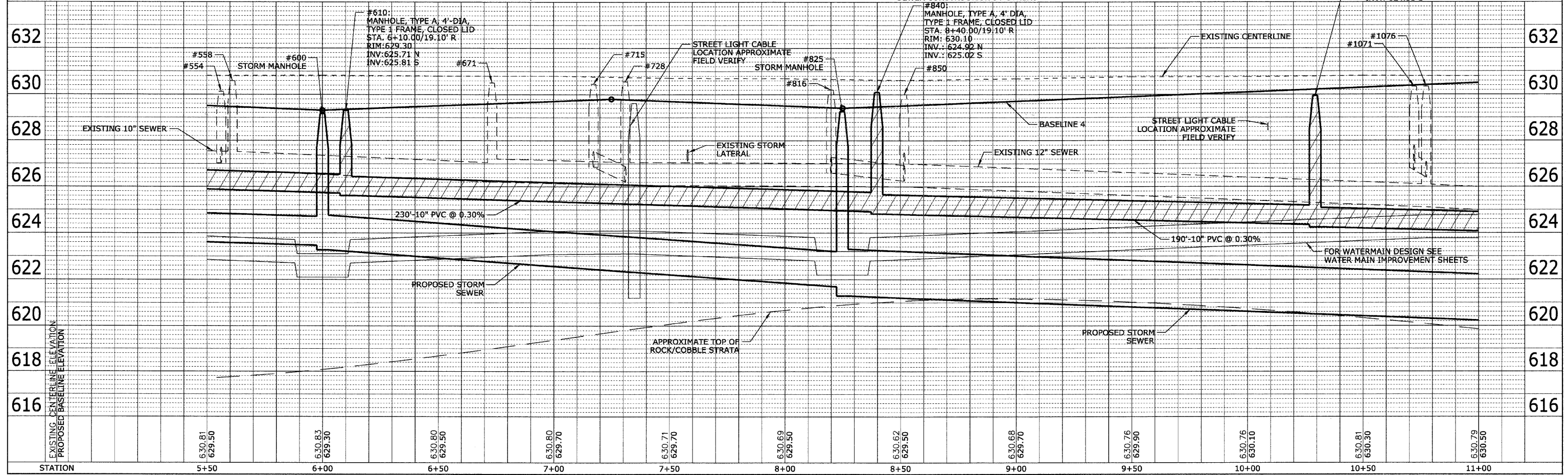
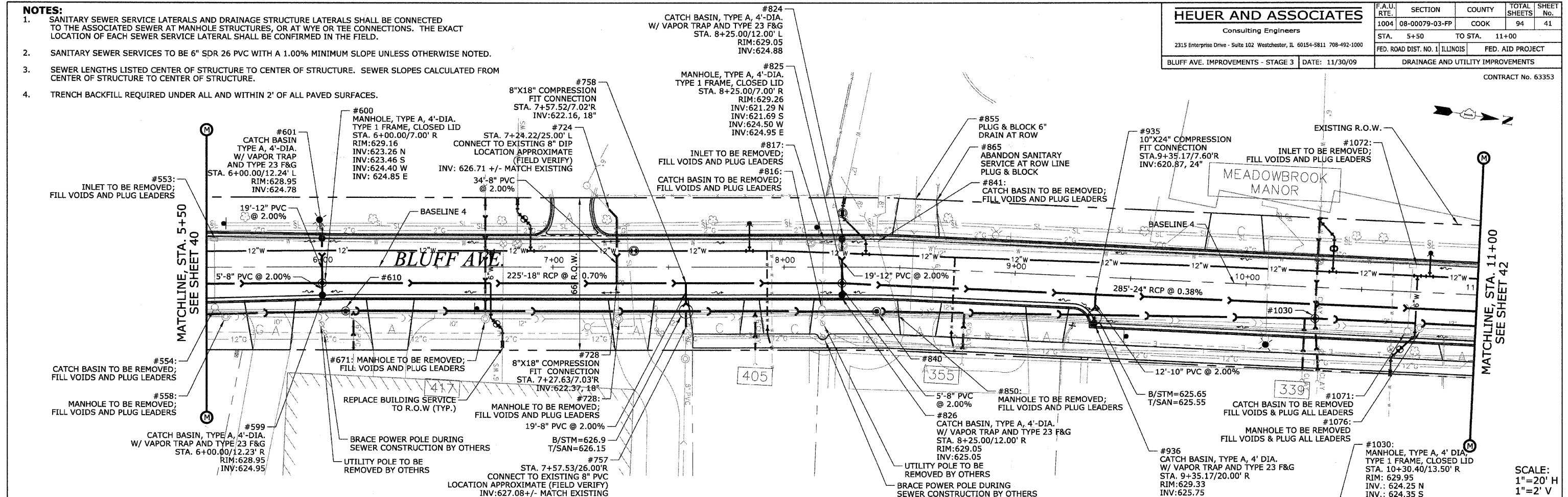


- NOTES:**
- SANITARY SEWER SERVICE LATERALS AND DRAINAGE STRUCTURE LATERALS SHALL BE CONNECTED TO THE ASSOCIATED SEWER AT MANHOLE STRUCTURES, OR AT WYE OR TEE CONNECTIONS. THE EXACT LOCATION OF EACH SEWER SERVICE LATERAL SHALL BE CONFIRMED IN THE FIELD.
 - SANITARY SEWER SERVICES TO BE 6" SDR 26 PVC WITH A 1.00% MINIMUM SLOPE UNLESS OTHERWISE NOTED.
 - SEWER LENGTHS LISTED CENTER OF STRUCTURE TO CENTER OF STRUCTURE. SEWER SLOPES CALCULATED FROM CENTER OF STRUCTURE TO CENTER OF STRUCTURE.
 - TRENCH BACKFILL REQUIRED UNDER ALL AND WITHIN 2' OF ALL PAVED SURFACES.

HEUER AND ASSOCIATES		F.A.U. RTE.	SECTION	COUNTY	TOTAL SHEETS	SHEET No.
Consulting Engineers		1004	08-00079-03-PP	COOK	94	41
2315 Enterprise Drive - Suite 102 Westchester, IL 60154-5811 708-492-1000		STA. 5+50	TO STA. 11+00			
BLUFF AVE. IMPROVEMENTS - STAGE 3		FED. ROAD DIST. NO. 1	ILLINOIS	FED. AID PROJECT		
DATE: 11/30/09		DRAINAGE AND UTILITY IMPROVEMENTS		CONTRACT No. 63353		

PLAN	DATE	BY
NO.		
NO.		
NO.		
NO.		

PROFILE	DATE	BY
NO.		
NO.		
NO.		
NO.		



SCALE:
1"=20' H
1"=2' V